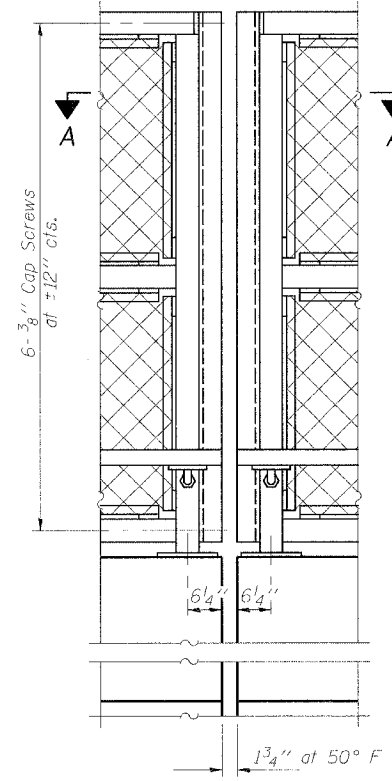
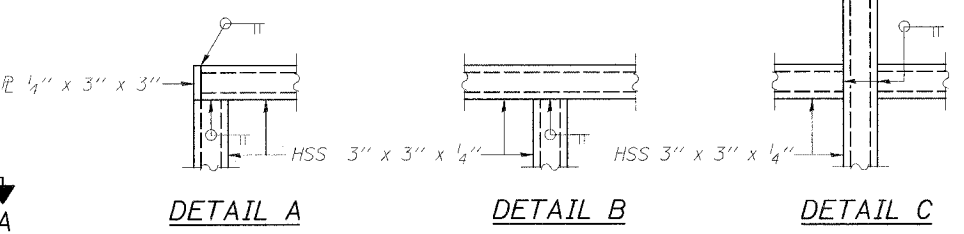


**ELEVATION**  
(Inside Face)

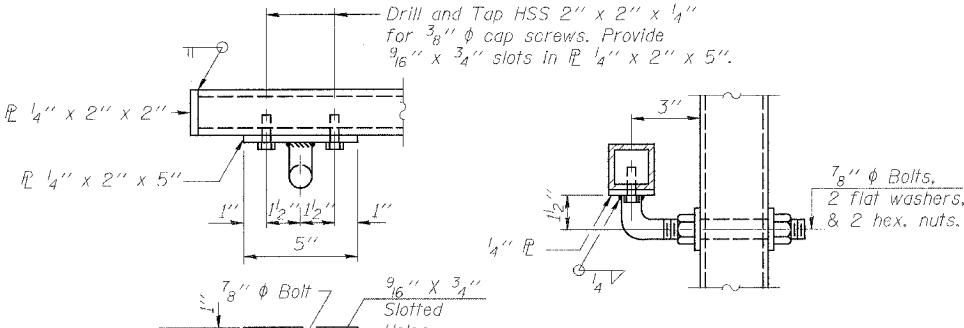
\* 6 3/4" West Walls  
4 3/4" East Walls



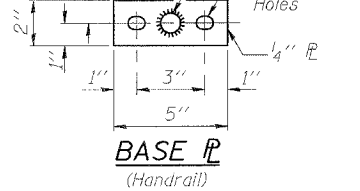
**ELEVATION**  
At Expansion Joints



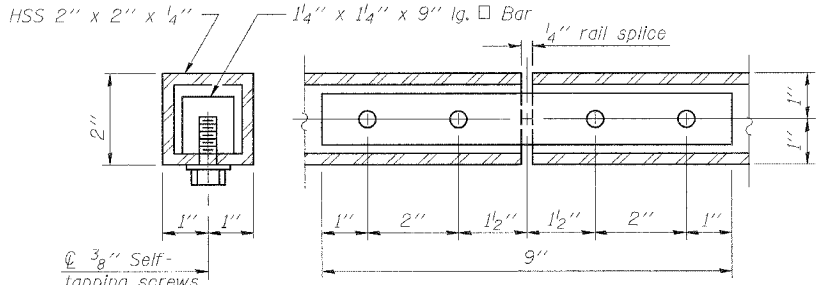
**DETAIL A**      **DETAIL B**      **DETAIL C**



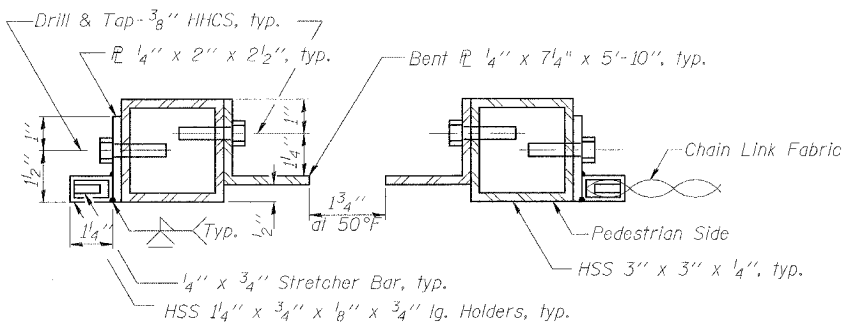
**HANDRAIL DETAIL**



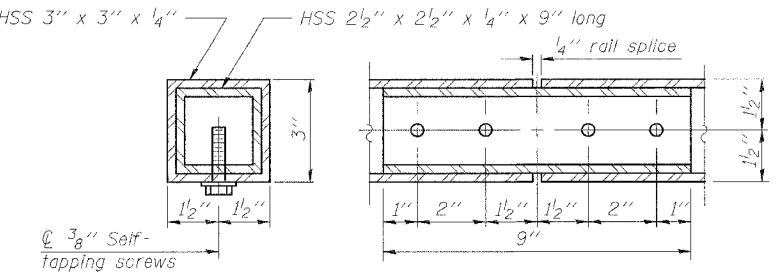
**BASE PL**  
(Handrail)



**HANDRAIL SPLICE**



**SECTION A-A**



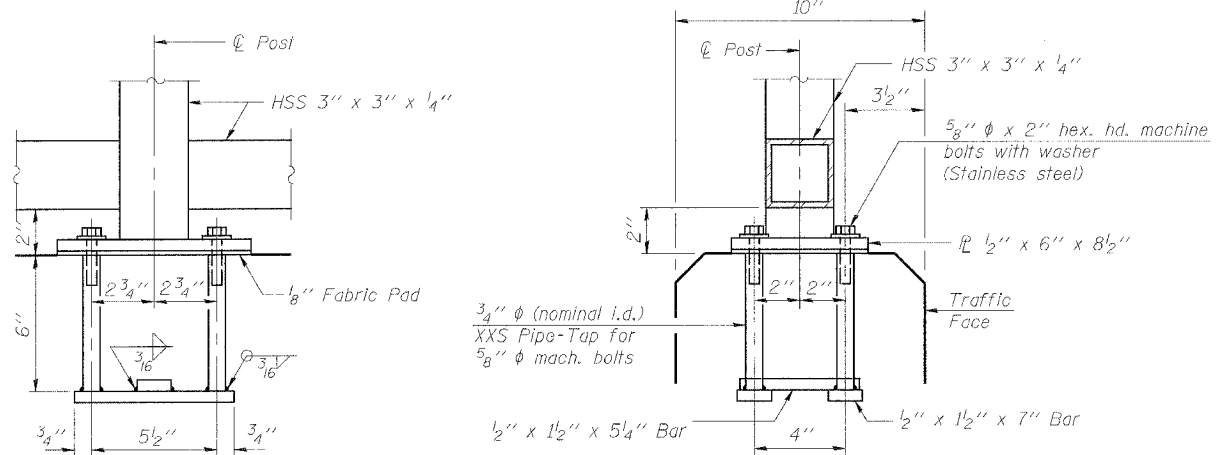
**RAIL SPLICE**

**NOTES**

Railing shall be according to Section 509 of the Standard Specifications, except as noted, and will be paid for at the Contract Unit Price per foot for Pedestrian Railing.  
The 9 gauge fabric lies shall be according to Article 1006.27(d) of the Standard Specifications.  
Installation of the chain link fabric shall be according to Section 664 of the Standard Specifications.  
Hollow structural sections shall conform to the requirements of ASTM designation A 500, Grade B, structural steel tubing.  
All other steel shapes and plates shall conform to the requirements of AASHTO M 270 Grade 36.  
The chain link fabric shall be placed along Pedestrian Side as shown on Section A-A.  
Stretcher bars shall be used at all four sides of each panel.  
If the option of drilling and epoxy grouting the anchor rods is chosen, the Contractor shall use the capsule or the adhesive cartridge type anchor rods that have been previously tested and given a prior approval by the Department. The Contractor shall install these anchor rods in pre-drilled holes according to the manufacturer's recommendations and procedures. The capsule or the adhesive cartridge shall be sealed with pre-measured amounts of the adhesive chemical.  
Space reinforcement to miss anchor rods.  
All posts, railing, splices, anchor devices, and bent plates shall be galvanized after shop fabrication according to AASHTO M 111 and ASTM A 385. All bolts, nuts, washers, and anchor rods shall be galvanized according to AASHTO M 232 except stainless steel bolts as noted.  
Vent holes for galvanizing shall be placed in the posts and rails at locations that will not allow the accumulation of moisture in the members.  
The chain link fabric shall conform to the requirements of Article 1006.27(a)(1)a, b or c of the Standard Specifications.  
Bridge mounted sign structures shall be installed prior to pedestrian railing. See Sheets 23 thru 26 of 26.

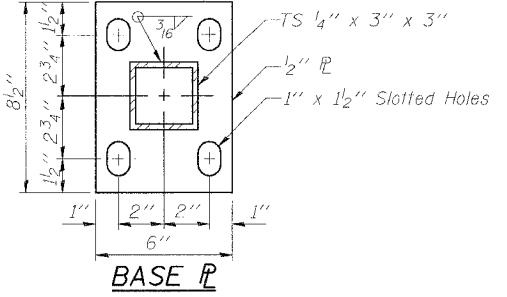
**BILL OF MATERIAL**

Item	Unit	Quantity
Pedestrian Railing	Foot	435



**ANCHOR BOLT DETAILS**

In lieu of the cast-in-place anchor device shown, the Contractor has the option of drilling and epoxy grouting 5/8 inch diameter anchor rods. Embedment shall be according to the manufacturer's specifications.



**BASE PL**

**rjngroup**  
Excellence through Ownership  
200 West Front Street  
Wheaton, IL 60187

ILLINOIS DEPARTMENT OF TRANSPORTATION  
PEDESTRIAN RAILING  
FOSTER AVE. OVER I-94 (EDENS EXPRESSWAY)  
FAU RTE 1360 - SECTION 0101BR-2  
COOK COUNTY  
STATION 100+00  
STRUCTURE NO. 016-0246

DATE: 4/30/2006      DRAWN BY LCM  
CHECKED BY BLB