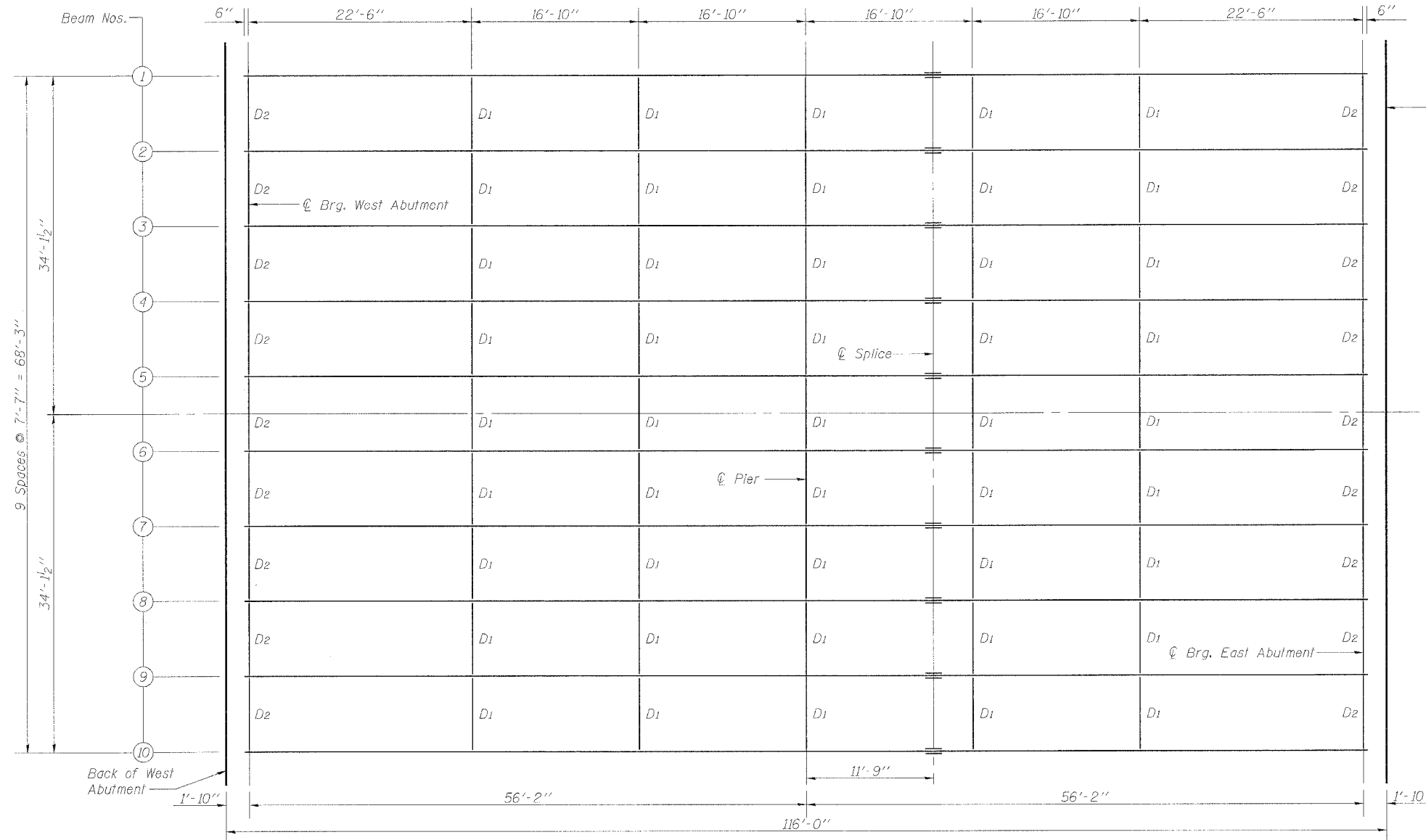


Contract #60A65



PLAN

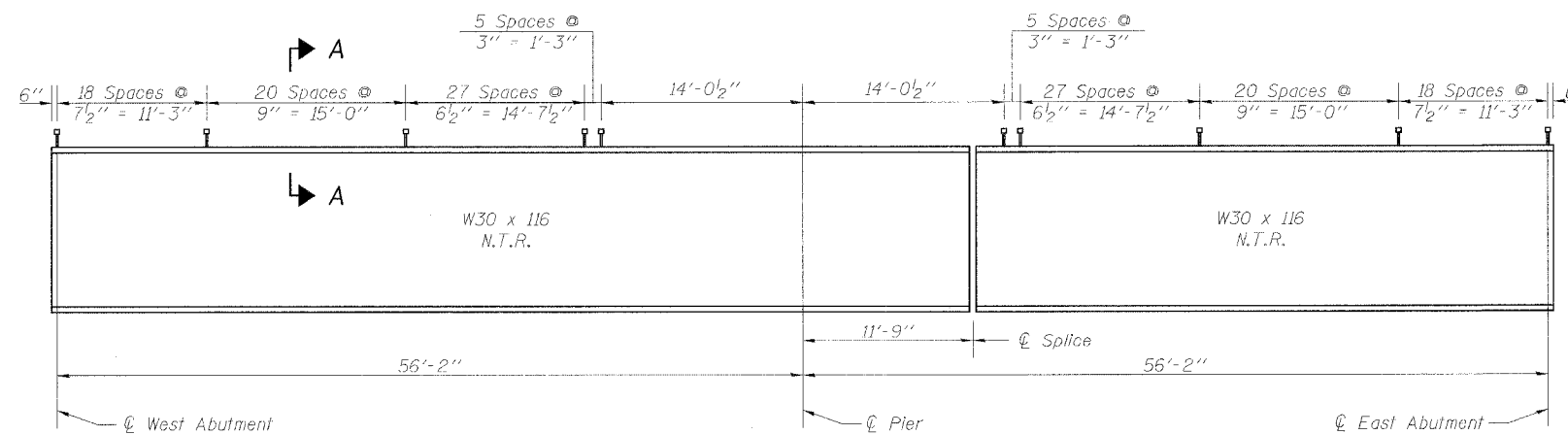
NOTES

D₁ denotes interior diaphragm.
 D₂ denotes end diaphragm at abutments.
 See Sheet 12 of 26 for Field Splice and Diaphragm Details.
 Wide flange beams shall be M 270 Grade 50 Steel.

TOP OF BEAM ELEVATIONS*

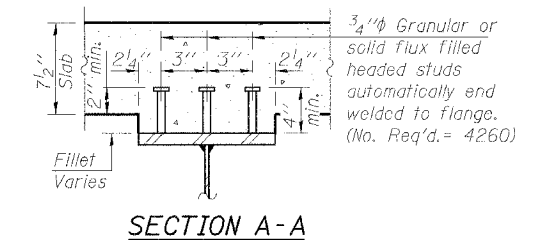
Location	W. Abut	Pier	Splice	E. Abut
Beam #1 Elev.	610.554	610.880	610.948	610.633
Beam #2 Elev.	610.668	610.993	611.061	610.747
Beam #3 Elev.	610.782	611.107	611.175	610.861
Beam #4 Elev.	610.896	611.221	611.289	610.975
Beam #5 Elev.	611.009	611.335	611.403	611.088
Beam #6 Elev.	611.009	611.335	611.403	611.088
Beam #7 Elev.	610.896	611.221	611.289	610.975
Beam #8 Elev.	610.782	611.107	611.175	610.861
Beam #9 Elev.	610.668	610.993	611.061	610.747
Beam #10 Elev.	610.554	610.880	610.948	610.633

* Elevations are before any deflections and are to be used for fabrication only.



BEAM ELEVATION

"N.T.R." denotes members to which notch toughness requirements are applicable.



BILL OF MATERIAL

Item	Unit	Quantity
Stud Shear Connectors	Each	4260

<p>Excellence through Ownership</p> <p>200 West Front Street Wheaton, IL 60187</p>	ILLINOIS DEPARTMENT OF TRANSPORTATION
	FRAMING PLAN FOSTER AVE. OVER I-94 (EDENS EXPRESSWAY) FAU RTE 1360 - SECTION 0101BR-2 COOK COUNTY STATION 100+00 STRUCTURE NO.016-0246
	DATE: 4/30/2006
	DRAWN BY LCM CHECKED BY BLB