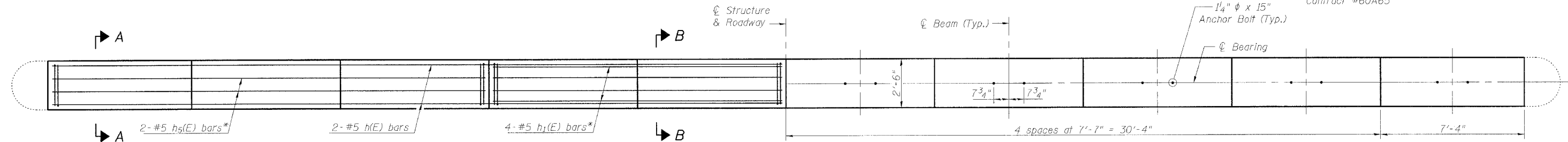
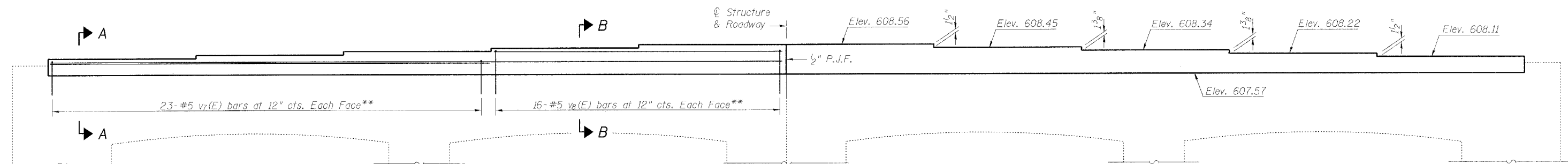


Contract #60A65



PIER PLAN

*Space to miss anchor bolts.

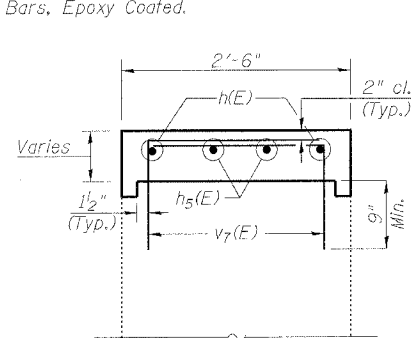


PIER ELEVATION

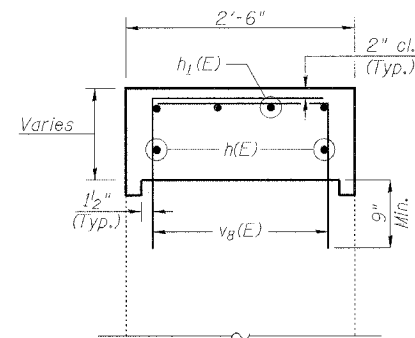
**Field drill and epoxy grout in place according to Article 584 of the Standard Specifications. Cost of drilling and grouting is included with Reinforcement Bars, Epoxy Coated.

LEGEND

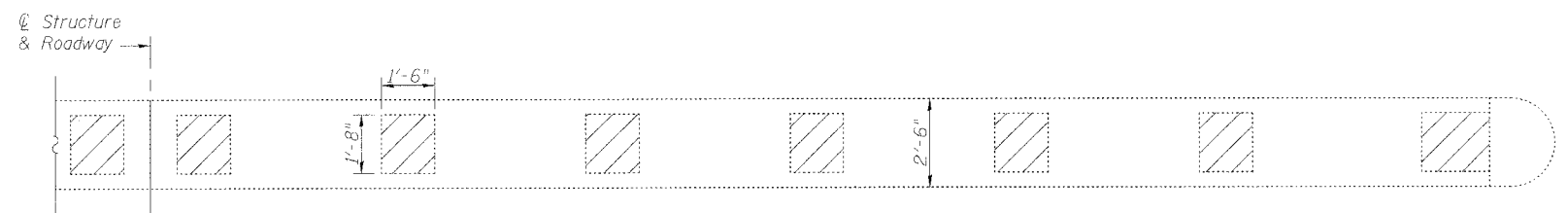
Concrete Removal



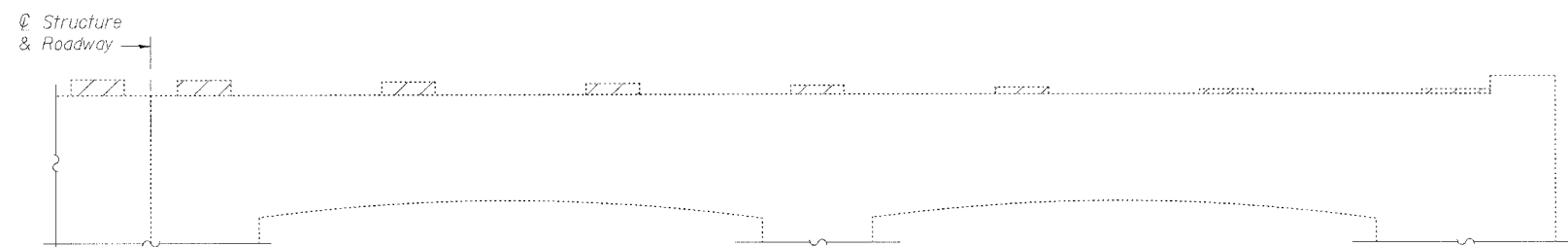
SECTION A-A



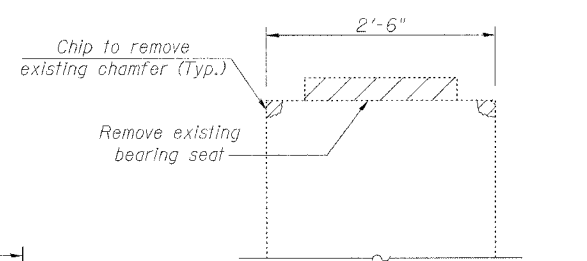
SECTION B-B



EXISTING PIER PLAN



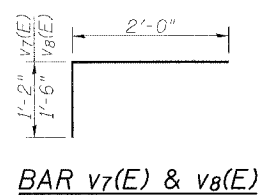
EXISTING PIER ELEVATION



SECTION THRU EXISTING PIER

BILL OF MATERIAL

Bar	No.	Size	Length	Shape
h(L)	4	#5	37'-4"	—
h1(E)	8	#5	14'-10"	—
h5(E)	4	#5	22'-7"	—
v7(E)	92	#5	3'-2"	┘
v8(E)	64	#5	3'-6"	┘
Reinforcement Bars, Epoxy Coated		Pound	920	
Concrete Removal		Cu. Yd.	0.5	
Concrete Structures		Cu. Yd.	5.4	



BAR v7(E) & v8(E)

NOTES

Reinforcement bars designated (E) shall be epoxy coated.

Space bars to miss anchor bolts.

See Sheet 14 of 26 for Anchor Bolt Details.

Pier is symmetric about ϕ of Roadway.

rjngroup
Excellence through Ownership

200 West Front Street
Wheaton, IL 60187

ILLINOIS DEPARTMENT OF TRANSPORTATION

PIER DETAILS
FOSTER AVE. OVER I-94 (EDENS EXPRESSWAY)
FAU RTE 1360 - SECTION 0101BR-2
COOK COUNTY
STATION 100+00
STRUCTURE NO. 016-0246

DATE: 4/30/2006

DRAWN BY BLB
CHECKED BY WJV