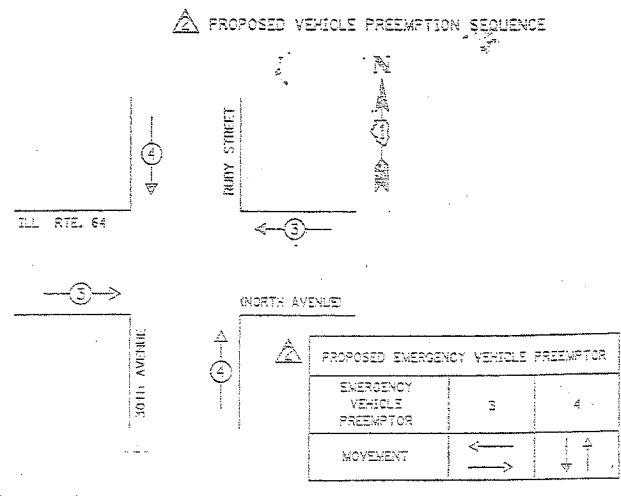


F.A.P. RTE.	SECTION	COUNTY	TOTAL SHEETS	SHEET NO.
344	2006-003 TS	COOK	63	15
STA.		TO STA.		
FED. ROAD DIST. NO.	ILLINOIS	FED. AID PROJECT		
CONTRACT NO. 60B13				

A THIS SHEET IS FOR PROPOSED FIBER OPTIC INTERCONNECT, NEW CONTROLLER ONLY.



THE END OF THE TRACER CABLE SHALL BE CONTINUOUS AND EXTEND INTO THE CONTROLLER CABINET.

THE END OF THE TRACER CABLE SHALL BE CONTINUOUS AND EXTEND INTO THE CONTROLLER CABINET.

PROPOSED SCHEDULE OF QUANTITIES

FULL-ACTUATED CONTROLLER
TRANSCIEVER - FIBER OPTIC

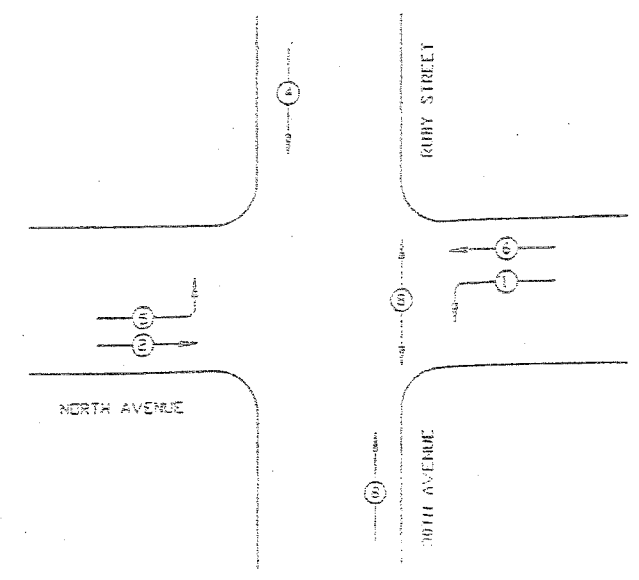
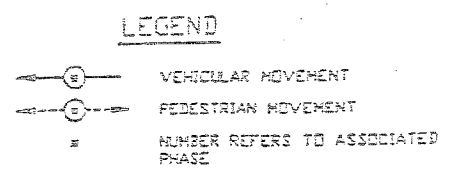
EACH 1
EACH 1

PROPOSED INTERCONNECT TO HAWTHORNE AV.

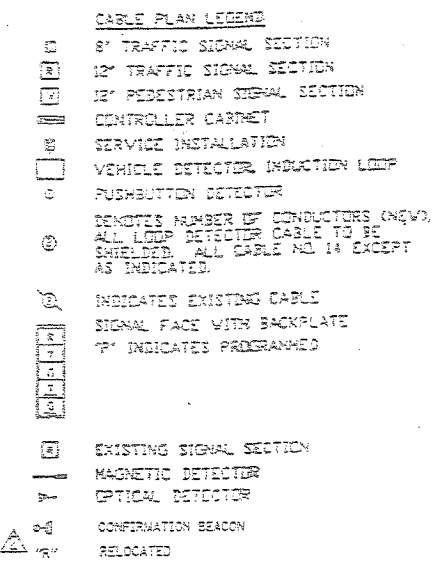
CONTROLLER SEQUENCE IV

REFERRING TO STANDARD 2393-L THE VEHICULAR AND PEDESTRIAN PHASES USED ARE DESIGNATED BELOW.

PHASE DESIGNATION DIAGRAM



CABLE PLAN



INSTALLATION OF EMERGENCY VEHICLE PREEMPTION
6-02-02
MELROSE PARK-SHEET 161 OF 365
CHRISTOPHER E. BURKE ENGINEERING LTD.
175 West Maple Road, Suite 400
Naperville, Illinois 60563
(630) 833-0800

ILLINOIS DEPARTMENT OF TRANSPORTATION
CABLE PLAN, PHASE DESIGNATION DIAGRAM,
SCHEDULE OF QUANTITIES
IL. RTE. 64 (NORTH AVENUE)
AND
30TH AVENUE/ RUBY STREET

SCALE: VERT. NTS
HORIZ. 1"=40'
DATE 6/19/06

DRAWN BY BCK
DESIGNED BY BCK
CHECKED BY JPD

REVISIONS	
NO. 1	DATE 4-5-03
NO. 2	DATE 6-03-02