

**PROPOSED FIBER OPTIC INTERCONNECT
RE-USING EXISTING CONDUIT.**

F.A.P. RTE.	SECTION	COUNTY	TOTAL SHEETS	SHEET NO.
344	2006-003 TS	COOK	63	55
STA.		TO STA.		
FED. ROAD DIST. NO.		ILLINOIS FED. AID PROJECT		
CONTRACT NO. 60B13				

MATCH LINE 9

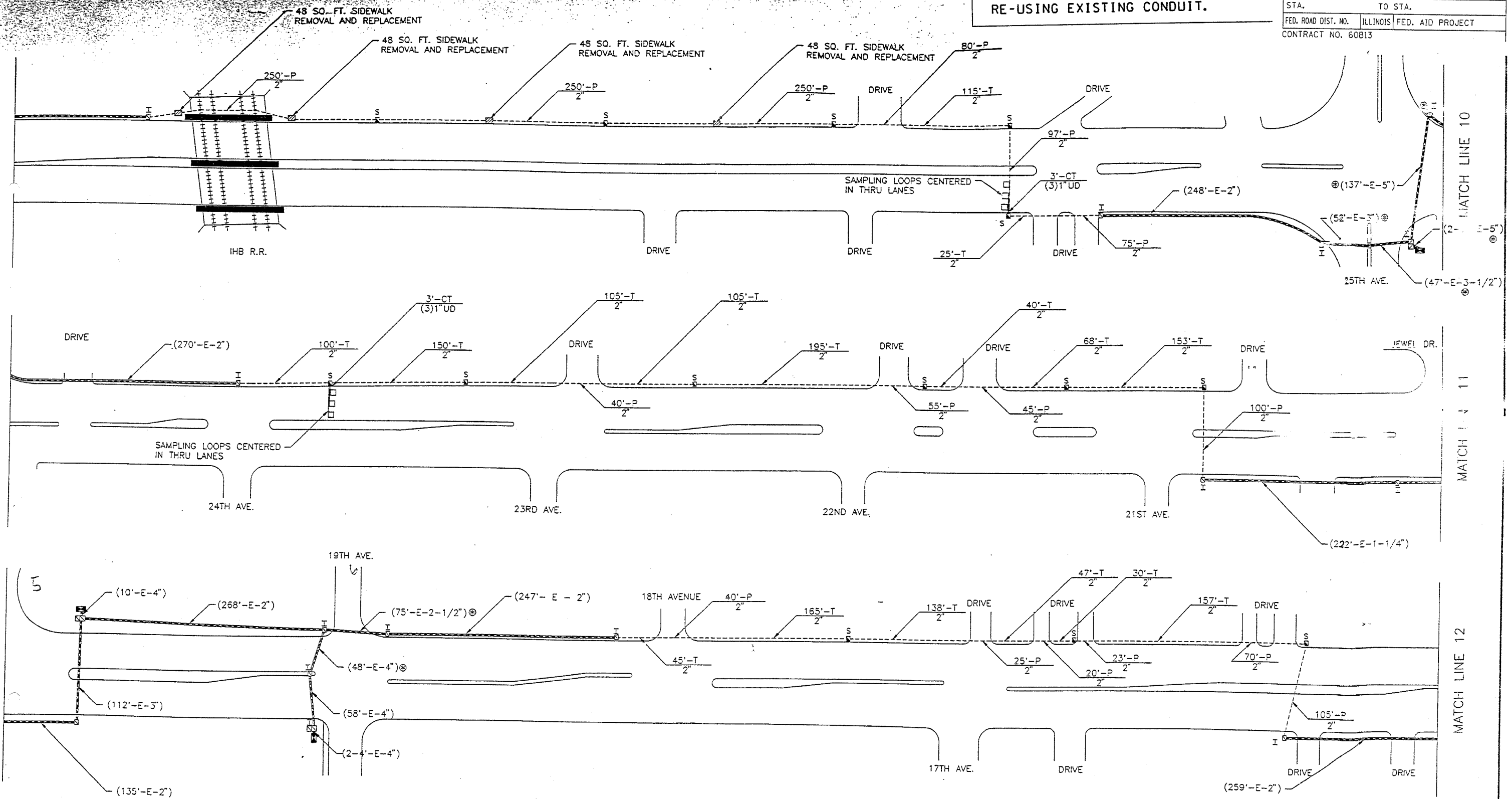
MATCH LINE 10

MATCH LINE 10

MATCH LINE 11

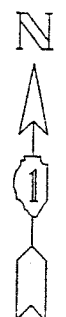
MATCH LINE 11

MATCH LINE 12



INTERCONNECT PLAN LEGEND

	PROPOSED	EXISTING
CONTROLLER	[Symbol]	[Symbol]
HANDHOLE	[Symbol]	[Symbol]
DOUBLE HANDHOLE	[Symbol]	[Symbol]
G.S. CONDUIT IN TRENCH OR PUSHED	[Symbol]	[Symbol]
DETECTOR LOOP	[Symbol]	[Symbol]
COMMON TRENCH	[Symbol]	[Symbol]
UNIT DUCT	[Symbol]	[Symbol]
SYSTEM	[Symbol]	[Symbol]
INTERSECTION	[Symbol]	[Symbol]
HEAVYDUTY HANDHOLE	[Symbol]	[Symbol]
PUSH PIT	[Symbol]	[Symbol]



REVISIONS	
NAME	DATE
JON RINGLER	4-13-93

ILLINOIS DEPARTMENT OF TRANSPORTATION
INTERCONNECT PLAN
 ILL. ROUTE 64 (NORTH)

SCALE: 1"=50'
 DATE 06/19/2006

DRAWN BY BCK
 DESIGNED BY BCK
 CHECKED BY DAD