

F.A.I. RTE.	SECTION	COUNTY	TOTAL SHEETS	SHEET NO.
55	2006-031 BY	WILL	137	1

+8
145

STATE OF ILLINOIS
DEPARTMENT OF TRANSPORTATION
DIVISION OF HIGHWAYS

**PROPOSED
HIGHWAY PLANS**

F.A.I. ROUTE 55 (INTERSTATE 55)
BRIDGE WIDENING
AT CSX RAILROAD AND SUNNYLAND DRAIN

SECTION: 2006-031 BY
~~PROJECT NO.:~~

WILL COUNTY
C-91-440-06

FOR INDEX OF SHEETS, SEE SHEET NO. 2

TRAFFIC DATA

ADT (2030) :
US 6 to I-80 = 64,000
U.S. 52 to U.S. 30 = 60,000

POSTED SPEED :
65 mph I-55

DESIGN DESIGNATION :
NA

MICROFILMED _____
REEL NUMBER _____
AWARDED _____
RESIDENT ENGINEER _____
AS BUILT CHANGES WERE MADE
ON THE FOLLOWING SHEETS _____



S.N. 099-0014 & 099-0015
BRIDGE WIDENING OF SB & NB I-55
OVER SUNNYLAND DRAIN

I-55
STA 492 + 49.25
PROJECT ENDS

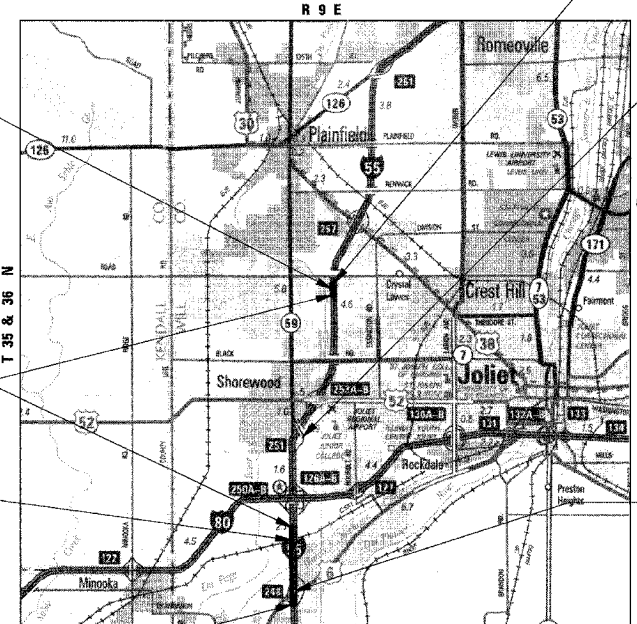
S.N. 099-0030
PROTECTIVE SHIELD (PERMANENT)
INSTALLED ON NB I-55 EXIT
RAMP OVER I-55

OMISSION FROM
STA. 186 + 03.63 TO STA. 216 + 37.60 (SB BL)
STA. 187 + 28.31 TO STA. 216 + 37.60 (NB BL)
STA. 216 + 37.60 TO 491 + 42.75 (I-55 MAINLINE)

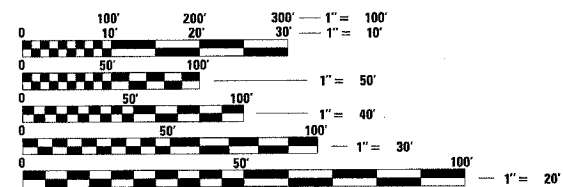
S.N. 099-0312
BRIDGE WIDENING OF SB I-55
OVER CSX RAILROAD

OMISSION FROM
STA 144 + 75.48 TO
STA 145 + 86.25 (SB PGL)

I-55
STA 137 + 12.40 (SB BL)
STA. 169 + 75.00 (NB BL)
PROJECT BEGINS



I-55 GROSS LENGTH OF PROJECT = 35,536.85 feet (6.730 miles)
I-55 NET LENGTH OF PROJECT = 5,011.67 feet (0.949 miles)



FULL SIZE PLANS HAVE BEEN PREPARED USING STANDARD ENGINEERING SCALES. REDUCED SIZED PLANS WILL NOT CONFORM TO STANDARD SCALES. IN MAKING MEASUREMENTS ON REDUCED PLANS, THE ABOVE SCALES MAY BE USED.

J.U.L.I.E.
JOINT UTILITY LOCATION INFORMATION FOR EXCAVATION
1-800-892-0123



BYRON T. DAMLEY, S.E.
IL. REG. NO. 081-004737
EXPIRES: 11/30/2006
DATE: 7/5/06



DOUGLAS D. HANSEN, P.E.
IL. REG. NO. 062-45293
EXPIRES: 11/30/2007
DATE: 7/5/06

TENG
TENG & ASSOCIATES, INC.
ENGINEERS/ARCHITECTS/PLANNERS
205 N. MICHIGAN AVE. CHICAGO, IL 60601

STATE OF ILLINOIS
DEPARTMENT OF TRANSPORTATION
DIVISION OF HIGHWAYS

SUBMITTED: June 22, 2006

Diane M. Olkaf/cnl
DEPUTY DIRECTOR OF HIGHWAYS, REGION ENGINEER

August 18, 2006
Mike Lane
ENGINEER OF DESIGN AND ENVIRONMENT

August 18, 2006
Milton R. Sees, P.E.
DIRECTOR OF HIGHWAYS, CHIEF ENGINEER

**PRINTED BY THE AUTHORITY
OF THE STATE OF ILLINOIS**

DISTRICT 1 - DESIGN /CONSULTANT SERVICES
PROJECT MANAGER: RAJENDRA SHAH 847-705-4555

CONTRACT NO. 60B85