

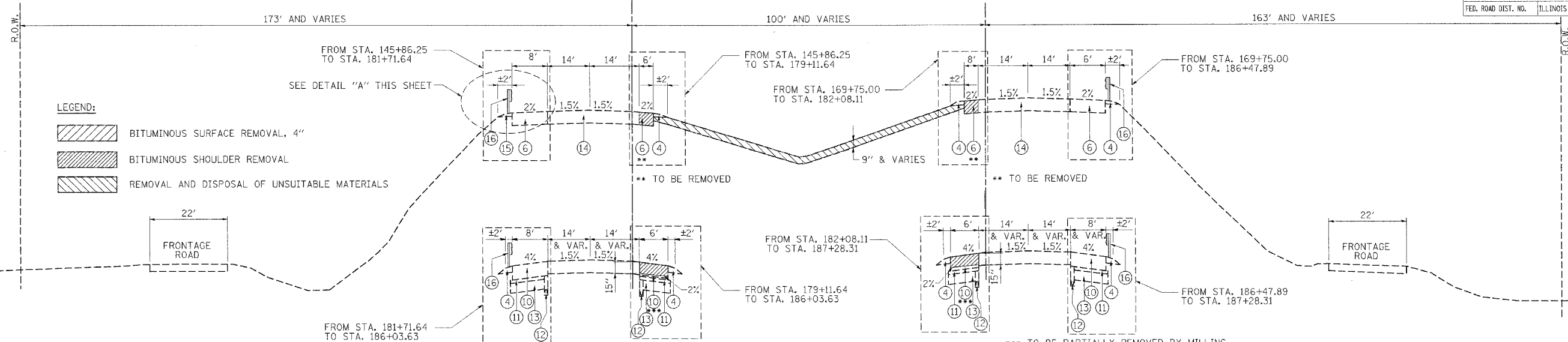
F.A.I. RTE.	SECTION	COUNTY	TOTAL SHEETS	SHEET NO.
55	2006-031 BY	WILL	137	7A
STA. TO STA.		ILLINOIS FED. AID PROJECT		

**LEGEND:**

- BITUMINOUS SURFACE REMOVAL, 4"
- BITUMINOUS SHOULDER REMOVAL
- REMOVAL AND DISPOSAL OF UNSUITABLE MATERIALS

EX I-55 SB

EX I-55 NB

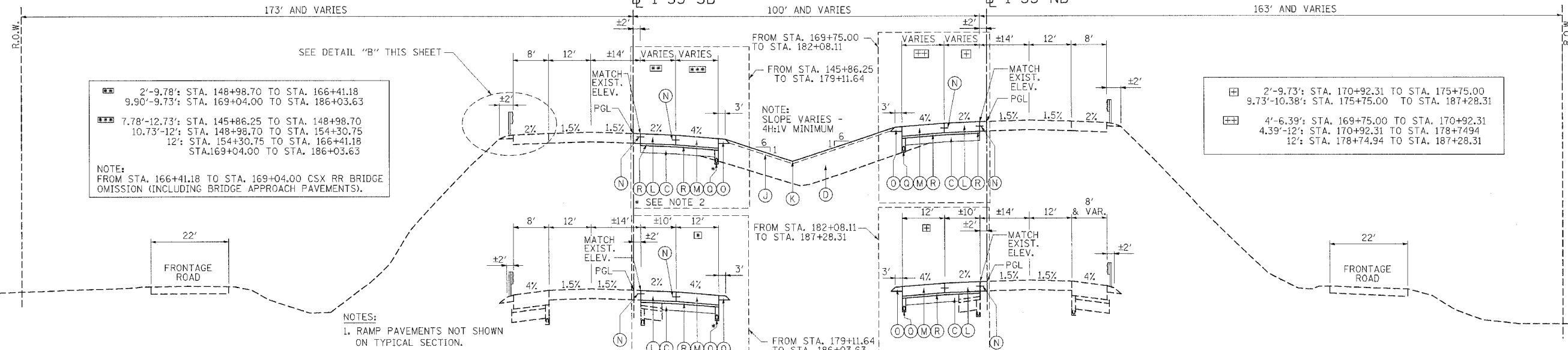


**EXISTING ROADWAY TYPICAL SECTION**

STA. 145+86.25 TO STA. 186+03.63 (SOUTHBOUND)  
STA. 169+75.00 TO STA. 187+28.31 (NORTHBOUND)

I-55 SB

I-55 NB



**PROPOSED ROADWAY TYPICAL SECTION**

STA. 145+86.25 TO STA. 186+03.63 (SOUTHBOUND)  
STA. 169+75.00 TO STA. 187+28.31 (NORTHBOUND)

2'-9.78': STA. 148+98.70 TO STA. 166+41.18  
9.90'-9.73': STA. 169+04.00 TO STA. 186+03.63  
7.78'-12.73': STA. 145+86.25 TO STA. 148+98.70  
10.73'-12': STA. 148+98.70 TO STA. 154+30.75  
12': STA. 154+30.75 TO STA. 166+41.18  
STA. 169+04.00 TO STA. 186+03.63  
NOTE:  
FROM STA. 166+41.18 TO STA. 169+04.00 CSX RR BRIDGE OMISSION (INCLUDING BRIDGE APPROACH PAVEMENTS).

2'-9.73': STA. 170+92.31 TO STA. 175+75.00  
9.73'-10.38': STA. 175+75.00 TO STA. 187+28.31  
4'-6.39': STA. 169+75.00 TO STA. 170+92.31  
4.39'-12': STA. 170+92.31 TO STA. 178+74.94  
12': STA. 178+74.94 TO STA. 187+28.31

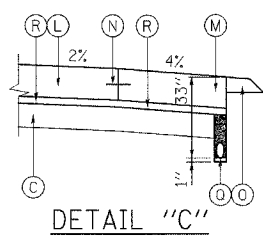
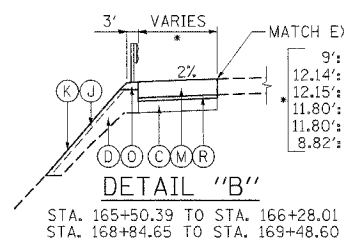
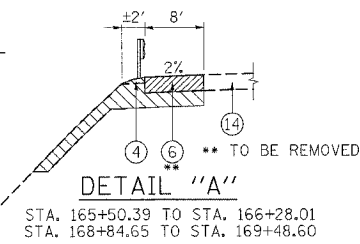
NOTES:  
1. RAMP PAVEMENTS NOT SHOWN ON TYPICAL SECTION.  
2. SEE DETAIL "C" THIS SHEET.

**EXISTING LEGEND**

- ① P.C.C. PAVEMENT, 10" AND VARIES
- ② BITUMINOUS RESURFACING 7" AND VARIES
- ③ BITUMINOUS SHOULDER 10" AND VARIES
- ④ AGGREGATE SHOULDER
- ⑤ BITUMINOUS SURFACE REMOVAL, 4"
- ⑥ P.C.C. SHOULDER 11"
- ⑦ NOT USED
- ⑧ NOT USED
- ⑨ NOT USED
- ⑩ BITUMINOUS SHOULDERS, SUPERPAVE, 17"
- ⑪ STABILIZED SUB-BASE 4"
- ⑫ PIPE UNDERDRAINS 6"
- ⑬ AGGREGATE SUBGRADE 12"
- ⑭ CRC PAVEMENT, 11"
- ⑮ NOT USED
- ⑯ SPBGR (SEE PLANS FOR LOCATIONS)

**PROPOSED LEGEND**

- Ⓐ NOT USED
- Ⓑ NOT USED
- Ⓒ AGGREGATE SUBGRADE, 12"
- Ⓓ EMBANKMENT
- Ⓔ NOT USED
- Ⓕ NOT USED
- Ⓖ NOT USED
- Ⓗ NOT USED
- Ⓘ NOT USED
- Ⓚ SEEDING, CLASS 2A
- Ⓛ CRC PAVEMENT, 11"
- Ⓜ PCC SHOULDERS, 11"
- Ⓝ TIE BARS (#6x24 @ 24 CTS)
- Ⓟ AGGREGATE SHOULDERS, TYPE B, 8"
- Ⓠ NOT USED
- Ⓡ PIPE UNDERDRAINS 6" (SEE DRAINAGE PLANS FOR LOCATIONS)
- Ⓢ STABILIZED SUB-BASE 4, SUPERPAVE
- Ⓣ BITUMINOUS CONCRETE SURFACE COURSE, SUPERPAVE, MIX "D", N TO, 2"
- Ⓤ AGGREGATE SHOULDERS, TYPE B (SPECIAL)



REVISIONS	
NAME	DATE
GF	7/26/06

ILLINOIS DEPARTMENT OF TRANSPORTATION  
FAI ROUTE 55 (OVER CSX RR AND SUNNYLAND DRAIN)  
BRIDGE WIDENING

**TYPICAL SECTIONS**  
STA. 145+86.25 TO STA. 186+03.63 SB  
STA. 169+75.00 TO STA. 187+28.31 NB

SCALE: N.T.S. DRAWN BY AG/GF  
DATE 07/21/06 CHECKED BY DDH

**TENG** TENG & ASSOCIATES, INC.  
ENGINEERS/ARCHITECTS/PLANNERS  
CHICAGO, ILLINOIS

PLOT DATE = 07/26/06  
 FILE NAME = 071116  
 PLOT SCALE = 1/8"=1'-0"  
 USER NAME = 01B85R

NEW SHEET