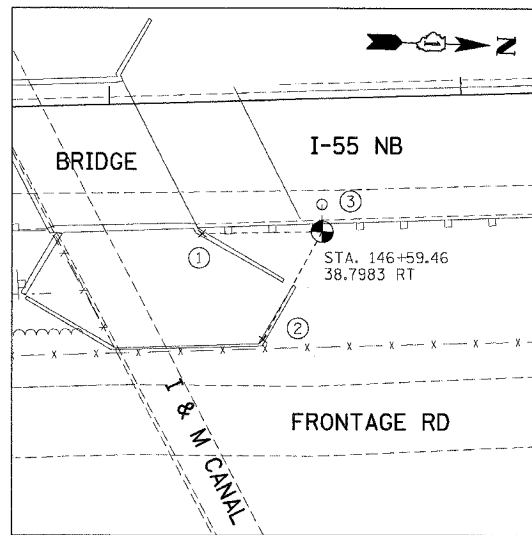
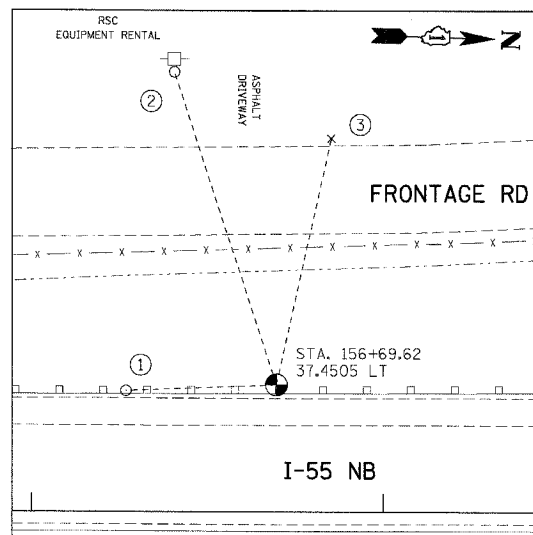


F.A.I. RTE.	SECTION	COUNTY	TOTAL SHEETS	SHEET NO.
55	2006-031	BY WILL	137	13
STA.		TO STA.		
FED. ROAD DIST. NO.		ILLINOIS FED. AID PROJECT		



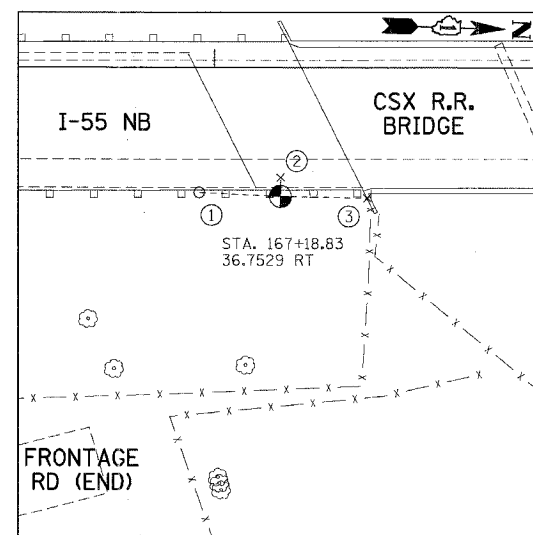
TP3

- (N 1749143.319, E 1021747.490, ELEV. 536.290)
- CUT CROSS ON TOP OF CONC. WALL, 34.20'
 - CUT CROSS ON TOP OF CONC. WALL, 35.25'
 - PK NAIL IN ASPH. SHOULDER, 7.86'



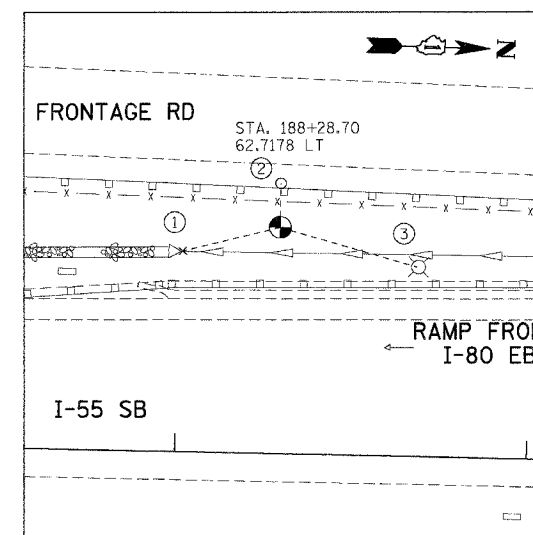
TP4

- (N 1750146.468, E 1021525.206, ELEV. 558.007)
- PK NAIL IN ASPHALT, 42.86'
 - PK NAIL ON EAST FACE OF POWER POLE, 93.72'
 - CUT CROSS ON TOP OF CONC. CURB, 71.98'



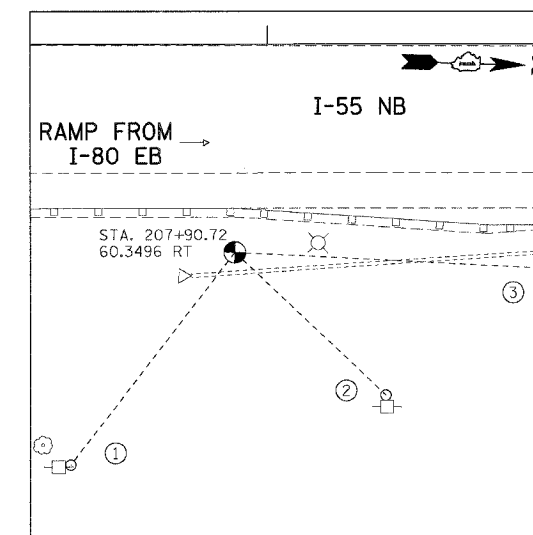
TP5

- (N 1751199.973, E 1021668.568, ELEV. 577.182)
- PK NAIL IN ASPHALT, 23.15'
 - CUT CROSS IN BRIDGE DECK, 5.35'
 - CUT CROSS ON TOP OF WINGWALL, 24.65'



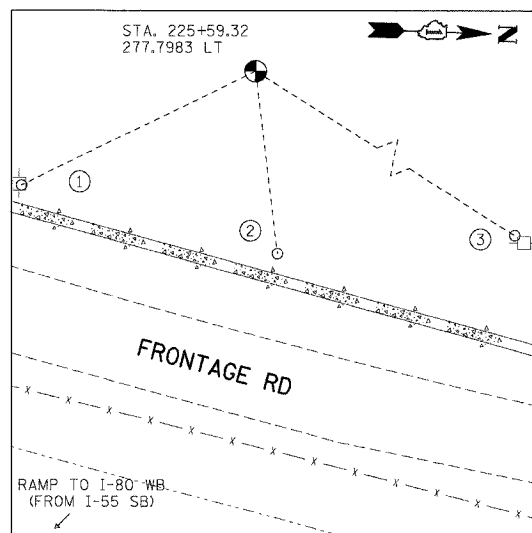
TP6

- (N 1753305.294, E 1021429.772, ELEV. 573.834)
- CUT CROSS ON TOP OF RCP 40", 28.60'
 - PK NAIL IN ASPHALT, 12.50'
 - SOUTH FACE OF LIGHT POLE, 40.50'



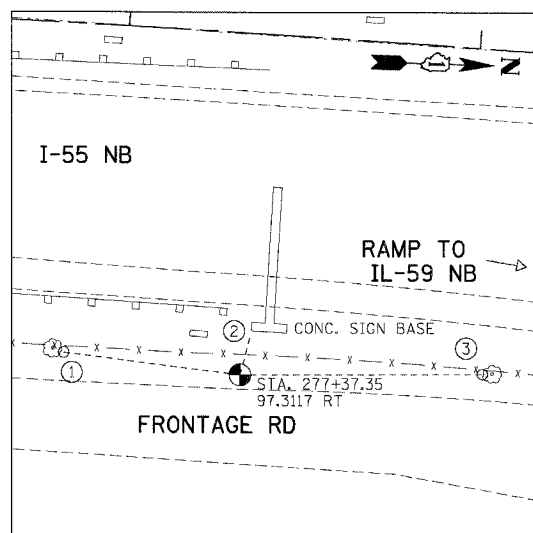
TP7

- (N 1755270.636, E 1021567.644, ELEV. 585.682)
- PK NAIL ON NORTH FACE OF POWER POLE, 76.45'
 - PK NAIL ON WEST FACE OF POWER POLE, 59.20'
 - PK NAIL ON SOUTH FACE OF POWER POLE, 87.50'



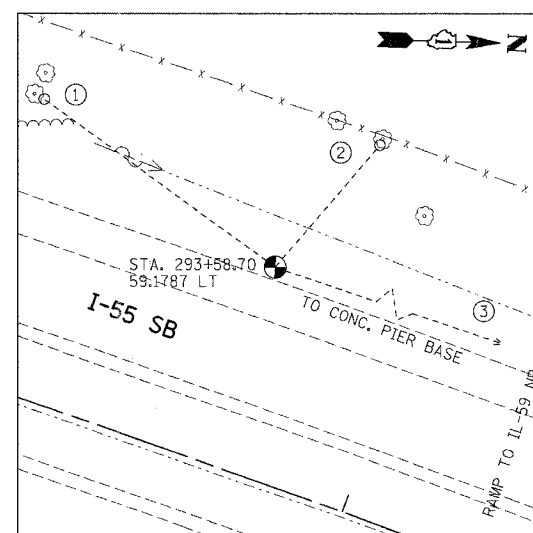
TP8

- (N 1757027.413, E 1021155.818, ELEV. 595.624)
- PK NAIL ON NORTH FACE OF POWER POLE, 74.05'
 - WILLTEL STAND. PIPE, 52.34'
 - PK NAIL ON SOUTH FACE OF POWER POLE, 139.20'



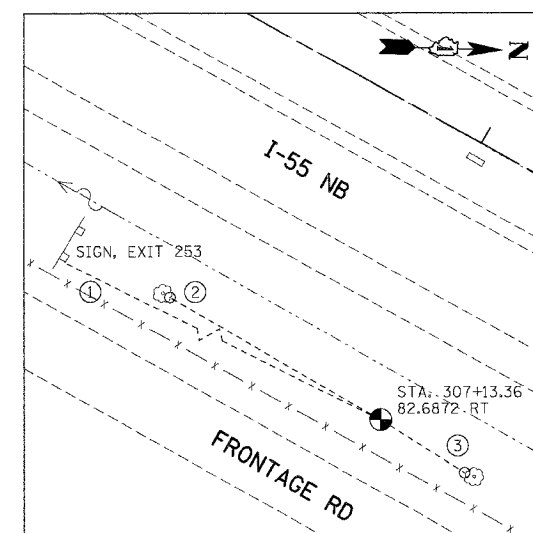
TP13

- (N 1762208.792, E 1021381.377, ELEV. 596.094)
- PK NAIL ON NORTH FACE OF 14" TREE, 50.53'
 - NEAREST CORNER OF CONC. SIGN BASE, 12.20'
 - PK NAIL ON EAST FACE OF 16" TREE, 68.97'



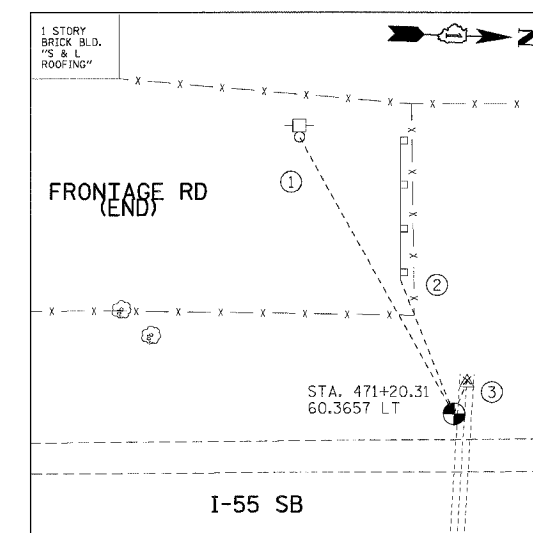
TP14

- (N 1763822.452, E 1021501.351, ELEV. 596.851)
- PK NAIL ON NORTH FACE OF 12" TREE, 81.23'
 - PK NAIL ON EAST FACE OF 12" TREE, 45.72'
 - CORNER OF CONC. PIER BASE, 274.15'



TP15

- (N 1765002.134, E 1022180.735, ELEV. 597.966)
- NEAREST CORNER OF SIGN POST, 134.40'
 - PK NAIL ON NORTH FACE OF 10" TREE, 69.33'
 - PK NAIL ON SOUTH FACE OF 6" TREE, 28.16'



TP31

- (N 1780473.889, E 1026024.869, ELEV. 590.948)
- PK NAIL ON EAST FACE OF POWER POLE, 90.30'
 - EAST END OF GUARDRAIL, 40.90'
 - CROSS CUT ON TOP OF CULVERT (48" RCP), 10.30'

REVISIONS	
NAME	DATE

ILLINOIS DEPARTMENT OF TRANSPORTATION
 FAT ROUTE 55 (OVER CSX RR AND SUNNYLAND DRAIN)
 BRIDGE WIDENING

ALIGNMENT, TIES AND BENCHMARKS

SCALE: N.T.S. DRAWN BY JFS
 DATE 07/07/06 CHECKED BY DDH

TENG TENG & ASSOCIATES, INC.
 ENGINEERS/ARCHITECTS/PLANNERS
 CHICAGO, ILLINOIS

PLOT DATE = 08/15/06
 PLOT SCALE = AS SHOWN
 USER NAME = JUSER8
 7-85-2886-8/25/06
 SANDOCUMENT V82361081ACTIVLADONV18B191A002.SHT