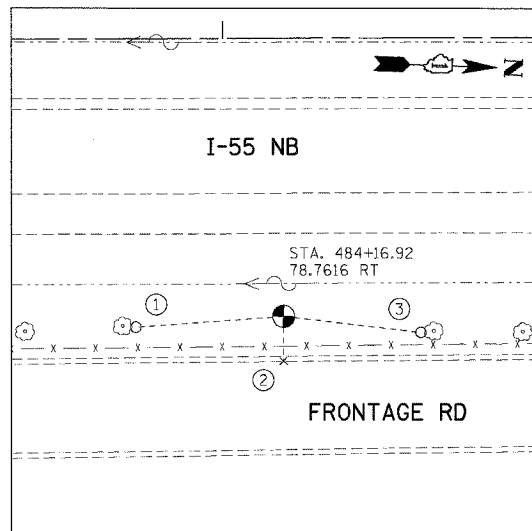
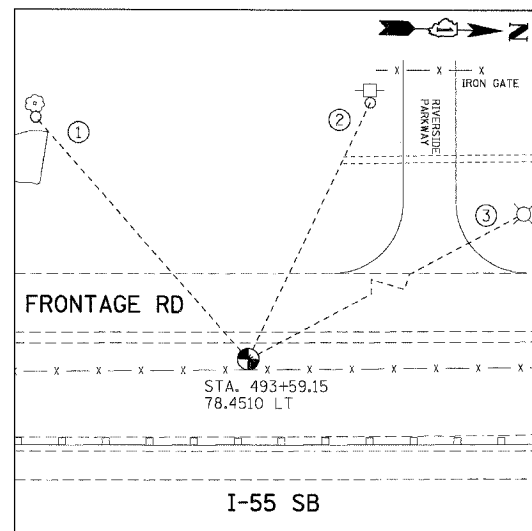


F.A.I. RTE.	SECTION	COUNTY	TOTAL SHEETS	SHEET NO.
55	2006-031	WILL	137	14
STA.		TO STA.		
FED. ROAD DIST. NO.	ILLINOIS	FED. AID PROJECT		



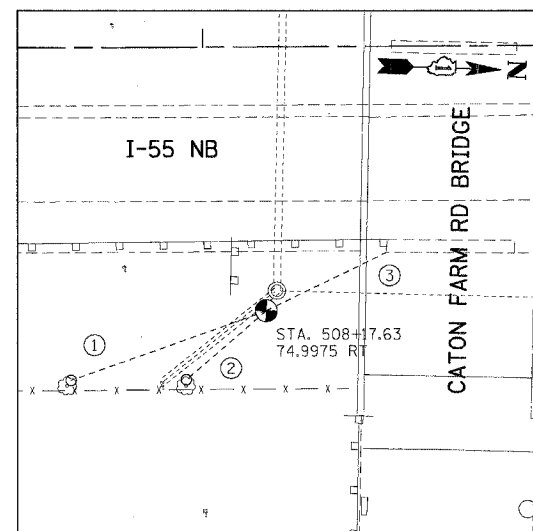
TP32

- (N 1781774.617, E 1026117.977, ELEV. 590.111)
- ① PK NAIL ON NORTH FACE OF 14" TREE, 42.10'
 - ② CROSS CUT ON TOP OF CURB, 12.70'
 - ③ PK NAIL ON SOUTH FACE OF 14" TREE, 39.35'



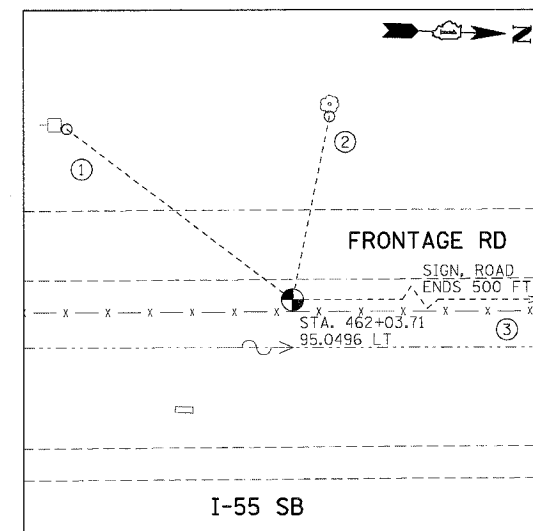
TP33

- (N 1782710.684, E 1025927.485, ELEV. 593.501)
- ① PK NAIL ON EAST FACE OF 14" TREE, 91.21'
 - ② PK NAIL ON EAST FACE OF POWER POLE, 80.63'
 - ③ NEAREST FACE OF LIGHT POLE, 123.90'



TP34

- (N 1784173.688, E 1026029.171, ELEV. 594.050)
- ① PK NAIL ON WEST FACE OF 10" TREE, 58.95'
 - ② PK NAIL ON WEST FACE OF 16" TREE, 30.10'
 - ③ NEAREST CORNER OF CONC. PIER BASE, 38.40'



TP35

- (N 1779556.639, E 1026022.677, ELEV. 591.351)
- ① PK NAIL ON NORTH FACE OF POWER POLE, 80.45'
 - ② PK NAIL ON EAST FACE OF 8" TREE, 63.00'
 - ③ NEAREST CORNER OF SIGN POST, 232.20'

PLOT DATE = #DATE#
 PLOT SCALE = #SCALE#
 USER NAME = #USER#
 -\BDP\0102\01.DWG
 7/05/2006 8:26:02
 GARCIAAZ
 S:\DOCUMENT\2006\01\CIVIL\DDN\1899\0806.SHT

REVISIONS	
NAME	DATE

ILLINOIS DEPARTMENT OF TRANSPORTATION
 FAI ROUTE 55 (OVER CSX RR AND SUNNYLAND DRAIN)
 BRIDGE WIDENING

**ALIGNMENT, TIES AND BENCHMARKS
 VI**

SCALE: N.T.S. DRAWN BY JFS
 DATE 07/07/06 CHECKED BY DDH

TENG TENG & ASSOCIATES, INC.
 ENGINEERS/ARCHITECTS/PLANNERS
 CHICAGO, ILLINOIS