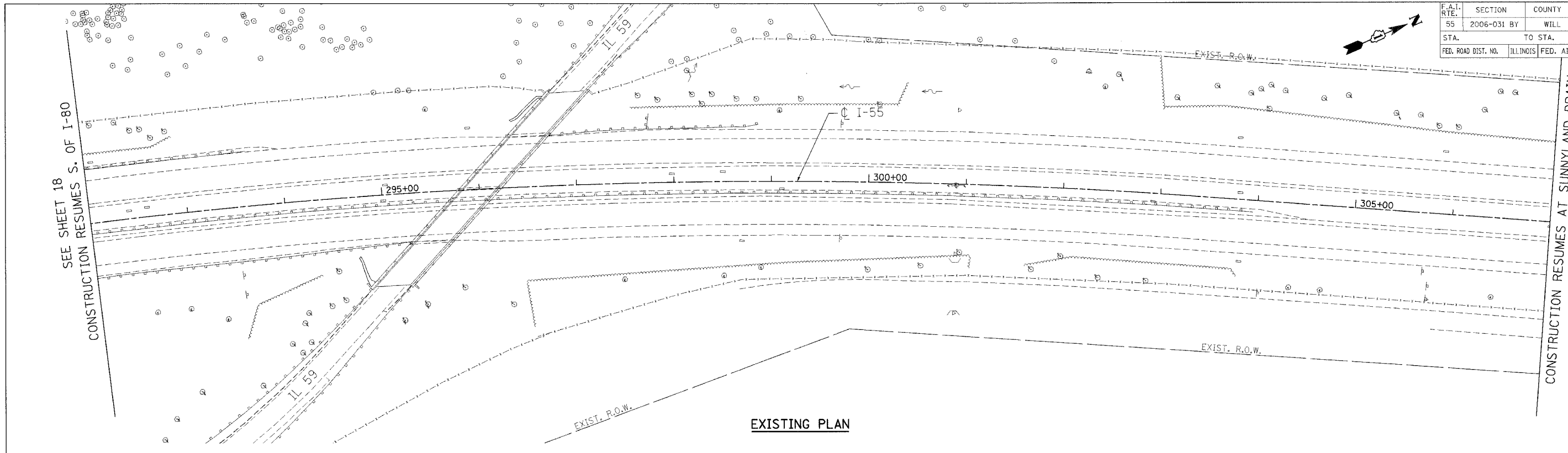


F.A.I. RTE.	SECTION	COUNTY	TOTAL SHEETS	SHEET NO.
55	2006-031	WILL	137	19
STA.	TO STA.			
FED. ROAD DIST. NO.	ILLINOIS	FED. AID PROJECT		



SEE SHEET 18
CONSTRUCTION RESUMES S. OF I-80

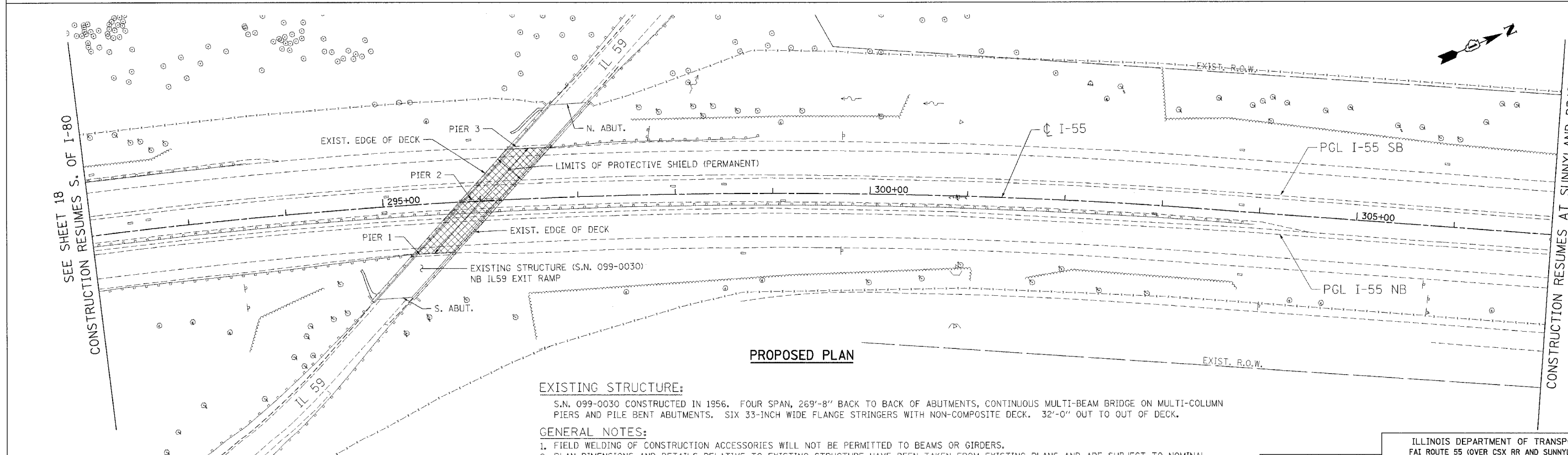
CONSTRUCTION RESUMES AT SUNNYLAND DRAIN
SEE SHEET 20



EXISTING PLAN

SEE SHEET 18
CONSTRUCTION RESUMES S. OF I-80

CONSTRUCTION RESUMES AT SUNNYLAND DRAIN
SEE SHEET 20



PROPOSED PLAN

EXISTING STRUCTURE:

S.N. 099-0030 CONSTRUCTED IN 1956. FOUR SPAN, 269'-8" BACK TO BACK OF ABUTMENTS, CONTINUOUS MULTI-BEAM BRIDGE ON MULTI-COLUMN PIERS AND PILE BENT ABUTMENTS. SIX 33-INCH WIDE FLANGE STRINGERS WITH NON-COMPOSITE DECK. 32'-0" OUT TO OUT OF DECK.

GENERAL NOTES:

- FIELD WELDING OF CONSTRUCTION ACCESSORIES WILL NOT BE PERMITTED TO BEAMS OR GIRDERS.
- PLAN DIMENSIONS AND DETAILS RELATIVE TO EXISTING STRUCTURE HAVE BEEN TAKEN FROM EXISTING PLANS AND ARE SUBJECT TO NOMINAL CONSTRUCTION VARIATIONS. IT SHALL BE THE CONTRACTOR'S RESPONSIBILITY TO VERIFY SUCH DIMENSIONS AND DETAILS IN THE FIELD AND MAKE NECESSARY APPROVED ADJUSTMENTS PRIOR TO CONSTRUCTION OR ORDERING OF MATERIALS. SUCH VARIATIONS SHALL NOT BE CAUSE FOR ADDITIONAL COMPENSATION FOR A CHANGE IN THE SCOPE OF THE WORK, HOWEVER, THE CONTRACTOR WILL BE PAID FOR THE QUANTITY ACTUALLY FURNISHED AT THE UNIT PRICE FOR THE WORK.
- THE EXISTING STRUCTURAL STEEL COATING CONTAINS LEAD. THE CONTRACTOR SHALL TAKE APPROPRIATE PRECAUTIONS TO DEAL WITH THE PRESENCE OF LEAD ON THIS PROJECT.
- TRAFFIC CONTROL FOR OFF-ROAD OPERATIONS SHALL BE ACCORDING TO STANDARDS 701101 AND 701106. LANE CLOSURES, AS REQUIRED, SHALL BE ACCORDING TO STANDARDS 701400 AND 701401 AND WILL ONLY BE ALLOWED DURING THE OFF PEAK HOURS AS DETAILED IN THE SPECIAL PROVISION FOR "KEEPING THE EXPRESSWAY OPEN TO TRAFFIC." THE COST FOR ALL TRAFFIC CONTROL REQUIRED TO INSTALL THE PROTECTIVE SHIELD SHALL BE INCLUDED IN THE CONTRACT UNIT PRICE FOR "TRAFFIC CONTROL AND PROTECTION (EXPRESSWAYS)."

REVISIONS	
NAME	DATE

ILLINOIS DEPARTMENT OF TRANSPORTATION
FAI ROUTE 55 (OVER CSX RR AND SUNNYLAND DRAIN)
BRIDGE WIDENING

**ROADWAY PLAN
FAI 55
AT IL ROUTE 59**

SCALE: 1"=50'
DATE: 07/21/06
DRAWN BY: AG
CHECKED BY: DDH

TENG
TENG & ASSOCIATES, INC.
ENGINEERS/ARCHITECTS/PLANNERS
CHICAGO, ILLINOIS

PLT DATE = 08/07/06
FILE NAME = 08/07/06
PLOT SCALE = 1/8"=1'-0"
USER NAME = 08/07/06