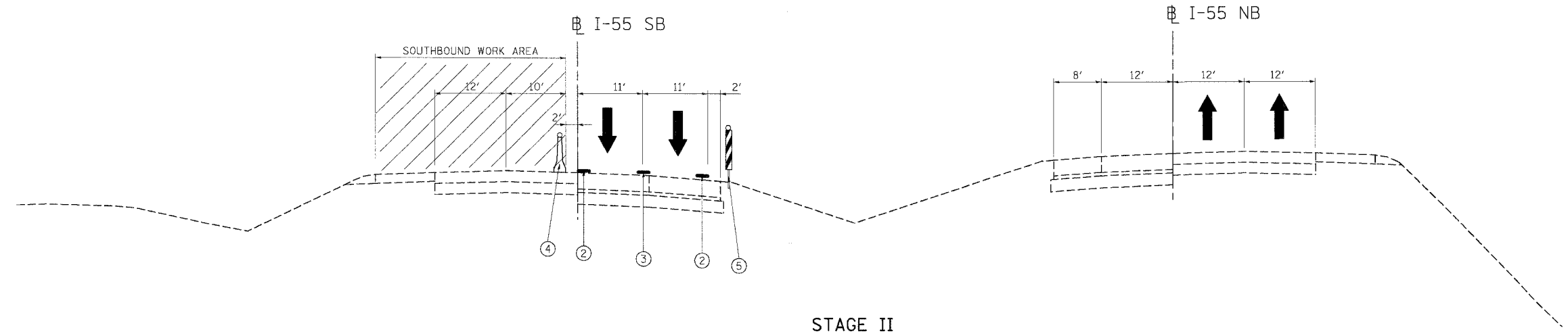


F.A.I. RTE.	SECTION	COUNTY	TOTAL SHEETS	SHEET NO.
55	2006-031 BY	WILL.	137	36
STA.		TO STA.		
FED. ROAD DIST. NO.	ILLINOIS	FED. AID PROJECT		



STAGE II

LEGEND

- ① EXIST. AGGREGATE SHOULDER
- ② PROP. PAVT. MARKING TAPE, TYPE III 4"
- ③ PROP. PAVT. MARKING TAPE, TYPE III 5"
- ④ TEMPORARY CONCRETE BARRIER
- ⑤ VERTICAL PANEL OR VERTICAL BARRICADE

- PAVT. PATCHING (AS DIRECTED BY THE ENGINEER)
- BIT. SURFACE REMOVAL AND RESURFACING
- TRAFFIC FLOW ARROW
- WORK AREA

REVISIONS	
NAME	DATE

ILLINOIS DEPARTMENT OF TRANSPORTATION  
 FAI ROUTE 55 (OVER CSX RR AND SUNNYLAND DRAIN)  
 BRIDGE WIDENING

**STAGING AND TRAFFIC CONTROL  
 FAI 55 - TYPICAL SECTIONS  
 STAGE II**

SCALE: \_\_\_\_\_ DRAWN BY JP  
 DATE 07/07/06 CHECKED BY DDH

**TENG** TENG & ASSOCIATES, INC.  
 ENGINEERS/ARCHITECTS/PLANNERS  
 CHICAGO, ILLINOIS

PLOT DATE = 07/07/06  
 PLOT SCALE = AS SHOWN  
 USER NAME = JUSHER

S:\DOCUMENT\0236102\AC\IVIL\CON\MT0910011.SHT  
 7-25-2006 9:28:28  
 CARCIHAZ