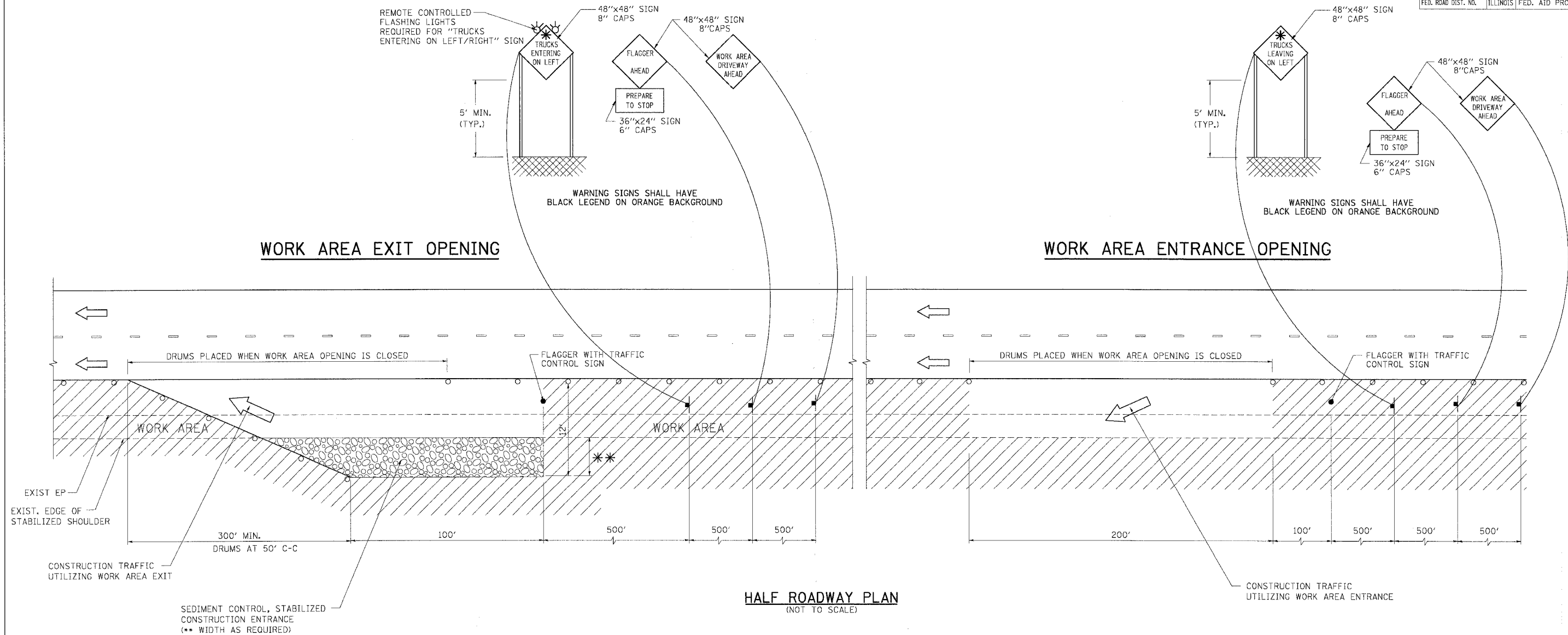


F.A.I. RTE.	SECTION	COUNTY	TOTAL SHEETS	SHEET NO.
55	2006-031 BY	WILL	137	43A
STA.		TO STA.		
FED. ROAD DIST. NO.		ILLINOIS	FED. AID PROJECT	

\* SIGNS ARE TO READ "TRUCKS ENTERING ON LEFT/RIGHT"

\* SIGNS ARE TO READ "TRUCKS LEAVING ON LEFT/RIGHT"



**NOTES**

1. THE "FLAGGER AHEAD" AND "TRUCKS ENTERING OR TRUCKS LEAVING ON LEFT/RIGHT" SIGNS SHALL BE REMOVED OR COVERED WHEN THE FLAGGING OPERATION CEASES.
2. THE FLASHING LIGHTS SHALL MEET THE REQUIREMENTS OF ARTICLE 702.05(G) AND BE OPERATED BY THE FLAGGER REMOTELY. THE LIGHTS SHALL BE FLASHING ONLY WHEN A VEHICLE IS ENTERING THE EXPRESSWAY.
3. WORK AREA EXIT OPENINGS SHALL BE LOCATED A MINIMUM OF ONE HALF MILE APART. WORK AREA EXIT OPENINGS AND WORK AREA ENTRANCE OPENINGS SHALL BE LOCATED A MINIMUM OF 2,300' APART. WORK AREA OPENINGS INTO THE MEDIAN FROM BOTH DIRECTIONS OF TRAFFIC SHALL NOT BE PLACED DIRECTLY ACROSS FROM EACH OTHER. THE WORK AREA OPENING LOCATIONS SHALL BE APPROVED BY THE ENGINEER.
4. ALL CONSTRUCTION VEHICLES SHALL EXIT THE WORK AREA AT A WORK AREA EXIT OPENING.
5. ALL CONSTRUCTION VEHICLES SHALL ENTER THE WORK AREA AT A WORK AREA ENTRANCE OPENING AND SHALL USE THEIR TURN SIGNALS TO WARN MOTORISTS.

6. THE CONTRACTOR SHALL PLACE DRUMS WITH STEADY BURNING MONODIRECTIONAL LIGHTS, SPACED AT 50' CENTERS, ACROSS THE WORK AREA OPENING WHEN THE WORK AREA OPENING IS CLOSED. THE COSTS OF INSTALLING, MAINTAINING AND REMOVING THESE DRUMS AND SIGNS SHALL BE INCLUDED IN THE UNIT PRICE BID FOR "TRAFFIC CONTROL AND PROTECTION (EXPRESSWAYS)".
7. WORK AREA OPENINGS SHALL NOT BE SIMULTANEOUSLY USED AS A WORK AREA ENTRANCE AND A WORK AREA EXIT.
8. THE CONTRACTOR SHALL CLOSE THE WORK AREA OPENING WHEN REVISING THE SIGNING FROM AN ENTRANCE TO AN EXIT AND FROM AN EXIT TO AN ENTRANCE.
9. A FLAGGER IS REQUIRED AT ALL TIMES UNLESS THE WORK AREA OPENING IS CLOSED. THE COST OF THE FLAGGER WILL NOT BE PAID FOR SEPARATELY, BUT SHALL BE INCLUDED IN THE UNIT PRICE BID FOR "TRAFFIC CONTROL AND PROTECTION (EXPRESSWAYS)".
10. SEE EROSION AND SEDIMENT CONTROL DETAIL FOR STABILIZED CONSTRUCTION ENTRANCE.

**LEGEND:**

- FLAGGER WITH TRAFFIC CONTROL SIGN
- ← DIRECTION OF TRAFFIC
- SIGN ON SUPPORT
- DRUM W/ MONODIRECTIONAL STEADY BURN LIGHT
- ▨ WORK AREA

REVISIONS	
NAME	DATE

ILLINOIS DEPARTMENT OF TRANSPORTATION  
 FAI ROUTE 55 (OVER CSX RR AND SUNNYLAND DRAIN)  
 BRIDGE WIDENING

**STAGING AND TRAFFIC CONTROL  
 DETAIL FOR SIGNING FOR FLAGGING  
 OPERATIONS AT WORK AREA OPENINGS**

SCALE: N.T.S. DRAWN BY JP  
 DATE 07/21/06 CHECKED BY DDH

**TENG**  
 TENG & ASSOCIATES, INC.  
 ENGINEERS/ARCHITECTS/PLANNERS  
 CHICAGO, ILLINOIS

PLOT DATE = 8/04/06  
 FILE NAME = FILEL8  
 SCALE = 1/8"=1'-0"  
 USER NAME = ROBERT