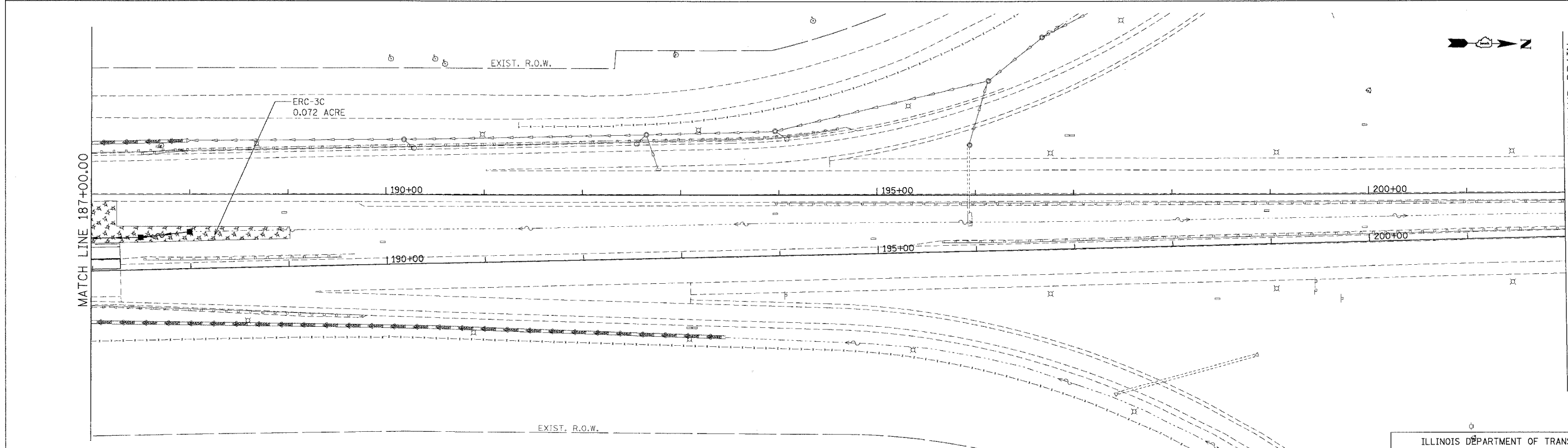
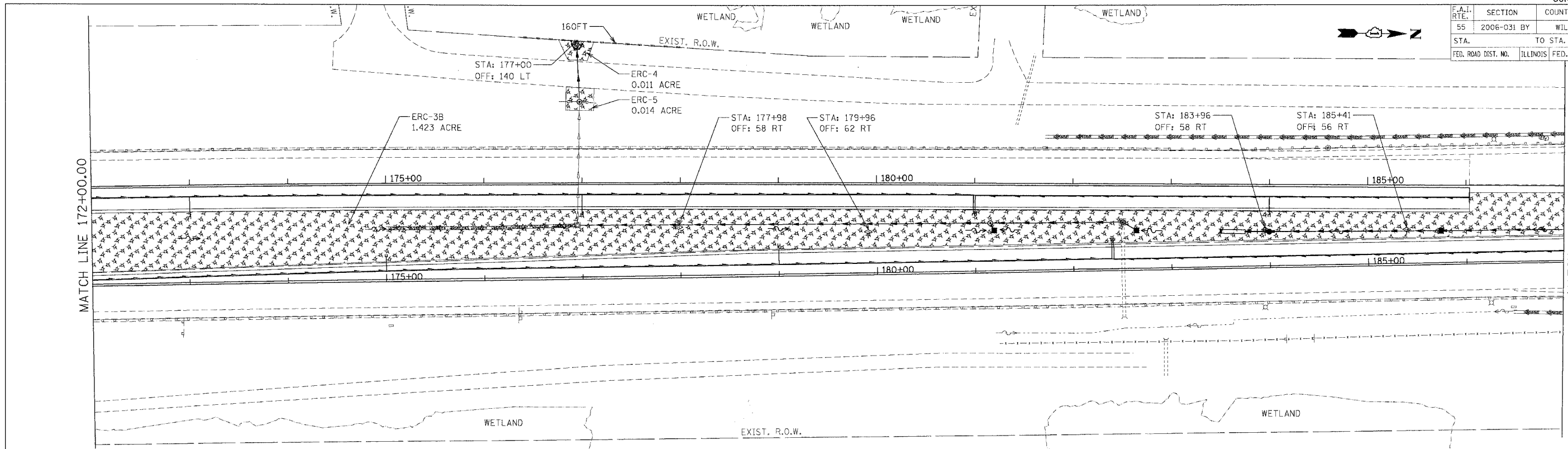


F.A.I. RTE.	SECTION	COUNTY	TOTAL SHEETS	SHEET NO.
55	2006-031 BY	WILL	137	46
STA.		TO STA.		
FED. ROAD DIST. NO.		ILLINOIS FED. AID PROJECT		



MATCH LINE 172+00.00

MATCH LINE 187+00.00

MATCH LINE 187+00.00

CONSTRUCTION RESUMES AT SUNYLAND DRAIN
SEE SHEET 47

LEGEND

- ◆ INLET FILTERS
- ◇ TEMPORARY DITCH CHECK
- ▣ TEMPORARY EROSION CONTROL SEEDING AND MULCH METHOD 2
- ▤ RIPRAP CLASS A3 & A4
- TEMPORARY SILT FENCE

NOTES:

1. FOR PERMANENT STRUCTURE, PERMANENT PIPE, SEDIMENT CONTROL INLET FILTER AND RIPRAP INFORMATION, SEE DRAINAGE SCHEDULES I AND II.

REVISIONS	
NAME	DATE

ILLINOIS DEPARTMENT OF TRANSPORTATION
FAI ROUTE 55 (OVER CSX RR AND SUNNYLAND DRAIN)
BRIDGE WIDENING

**EROSION AND SEDIMENT CONTROL
FAI 55
STA. 172+00.00 TO STA. 187+28.31**

SCALE: 1"=50' DRAWN BY: SN
DATE: 07/07/06 CHECKED BY: TKL

TENG
TENGG & ASSOCIATES, INC.
ENGINEERS/ARCHITECTS/PLANNERS
CHICAGO, ILLINOIS

MORCOM, N.V., INC.
CONSULTING ENGINEERS
CHICAGO, ILLINOIS

PLOT DATE = 07/07/06
PLOT SCALE = 1"=50'
USER NAME = MUSER