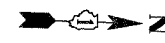
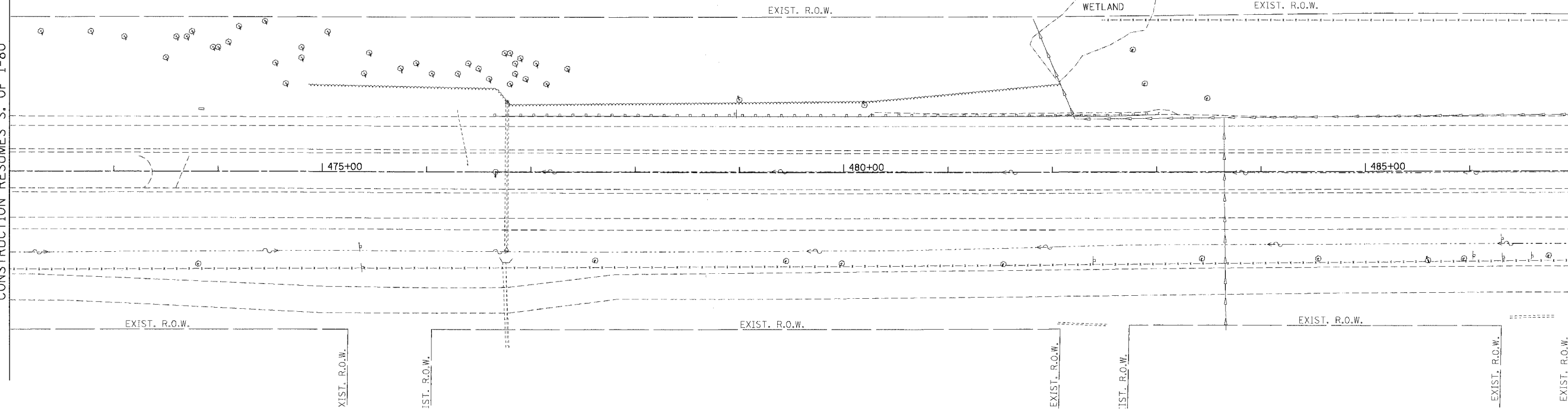


F.A.I. RTE.	SECTION	COUNTY	TOTAL SHEETS	SHEET NO.
55	2006-031 BY	WILL	137	47
STA.		TO STA.		
FED. ROAD DIST. NO.		ILLINOIS FED. AID PROJECT		

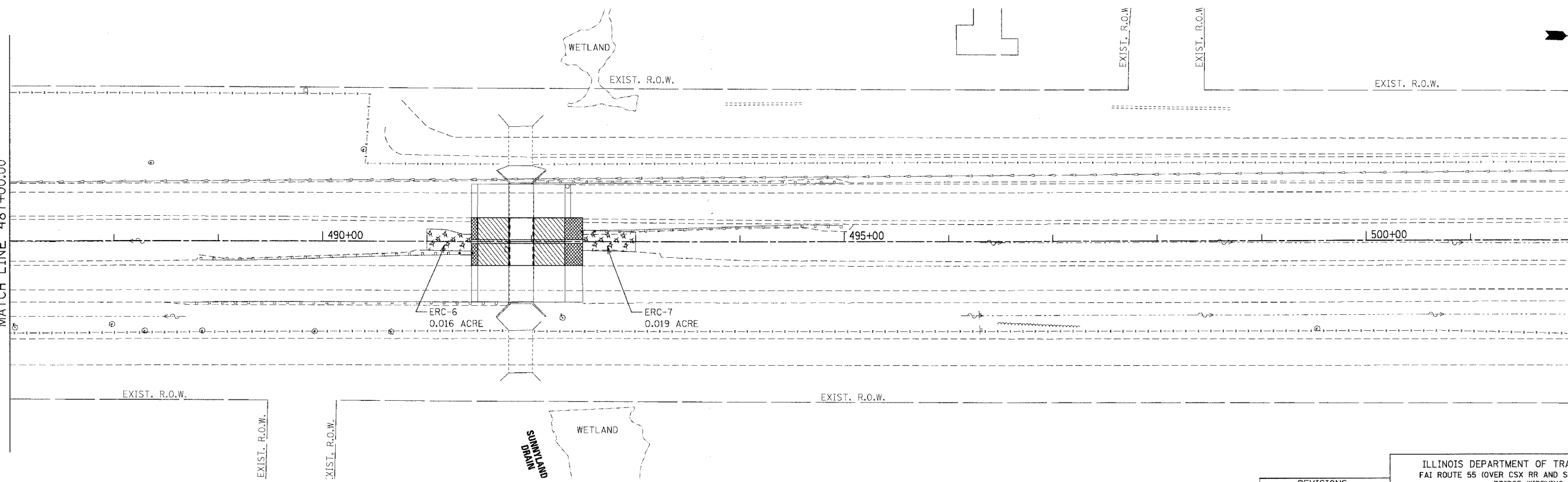
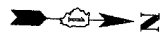


SEE SHEET 46
CONSTRUCTION RESUMES S. OF I-80

MATCH LINE 487+00.00



MATCH LINE 487+00.00



- LEGEND**
- ◆ INLET FILTERS
 - ◇ TEMPORARY DITCH CHECK
 - ▭ TEMPORARY EROSION CONTROL SEEDING AND MULCH METHOD 2
 - ▨ RIPRAP CLASS A3 & A4
 - - - TEMPORARY SILT FENCE

NOTES:

1. FOR PERMANENT STRUCTURE, PERMANENT PIPE, SEDIMENT CONTROL INLET FILTER AND RIPRAP INFORMATION, SEE DRAINAGE SCHEDULES I AND II.

REVISIONS	
NAME	DATE

ILLINOIS DEPARTMENT OF TRANSPORTATION
FAI ROUTE 55 (OVER CSX RR AND SUNNYLAND DRAIN)
BRIDGE WIDENING

**EROSION AND SEDIMENT CONTROL
FAI 55
STA. 472+00.00 TO STA. 492+49.25**

SCALE: 1"=50' DRAWN BY SN
DATE 07/07/06 CHECKED BY TKL

TENG
TENGG & ASSOCIATES, INC.
ENGINEERS/ARCHITECTS/PLANNERS
CHICAGO, ILLINOIS

MORCOM, N.V., INC.
CONSULTING ENGINEERS
CHICAGO, ILLINOIS

PLOT DATE = 07/07/06
 PLOT SCALE = 1"=50'
 USER NAME = USER