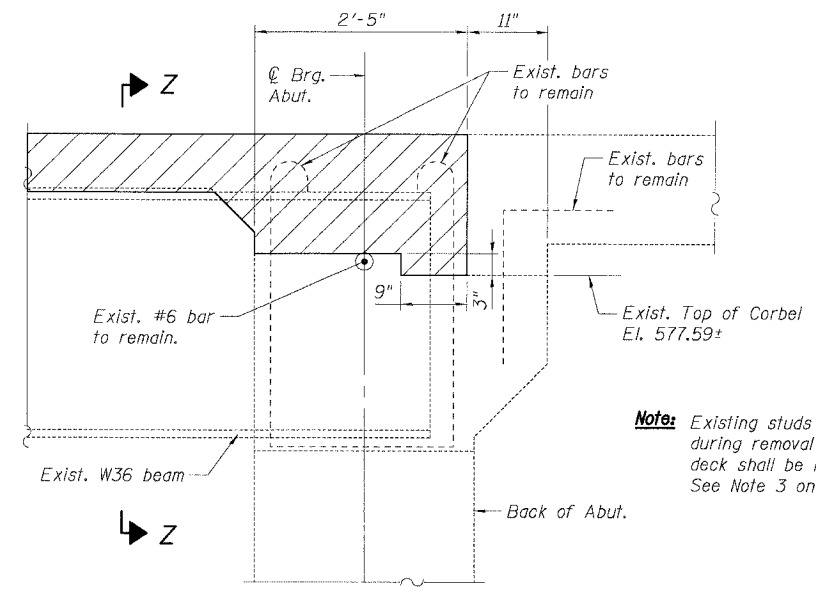


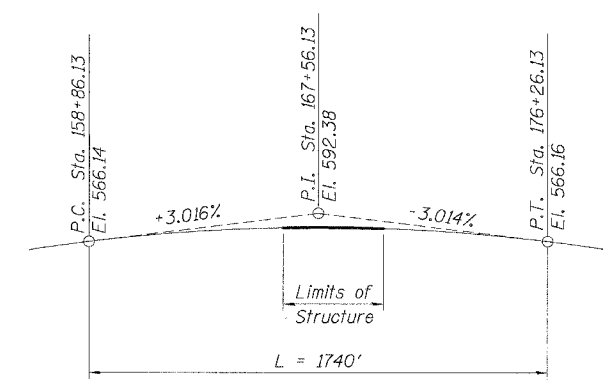
F.A.I. RTE.	SECTION	COUNTY	TOTAL SHEETS	SHEET NO.
55	2006-031 BY	WILL	137	66
STA.		TO STA.		
FED. ROAD DIST. NO.	ILLINOIS	FED. AID PROJECT		



**DECK REMOVAL LIMITS AT ABUTMENTS**

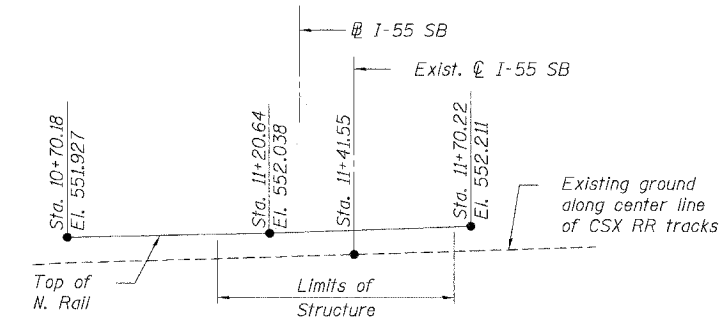
**Note:** Existing studs damaged during removal of exist. deck shall be replaced. See Note 3 on Sht. SA-11A.

**LEGEND**



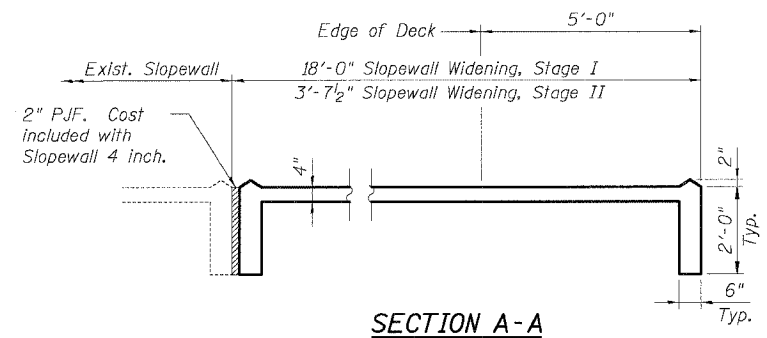
**I-55 SB PGL**

(developed from survey data)



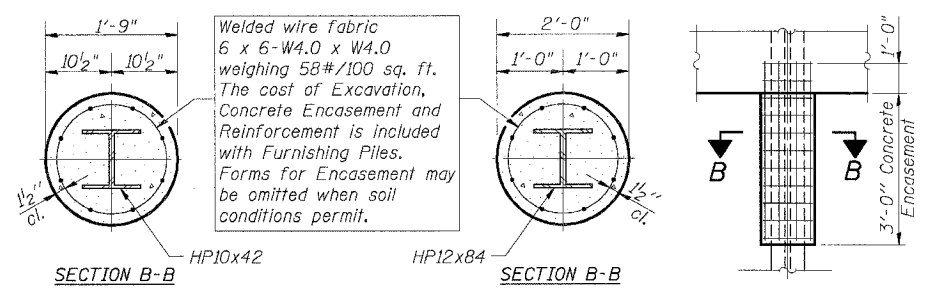
**PROFILE GRADE CSX RR**

(from survey)



**SECTION A-A**

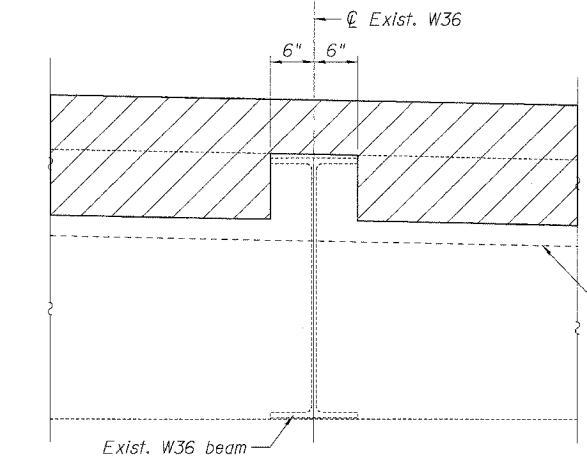
(slopewall details)



**PILE ENCASEMENT DETAIL**

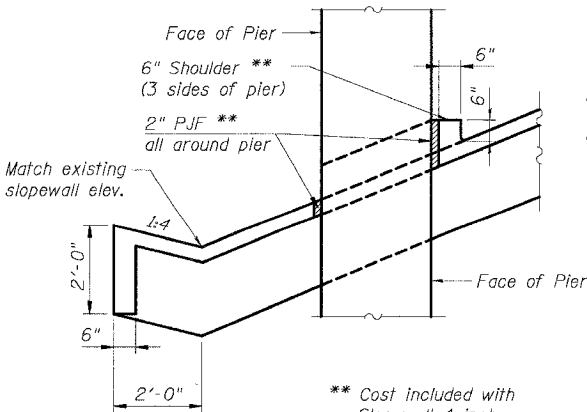
**Notes:**

1. See Sheet SA-1 for location of Section A-A
2. All drainage system components shall extend to 2'-0" from the end of each wingwall except an outlet pipe shall extend until intersecting with the side slopes. The pipes shall drain into concrete headwalls. (See Article 601.05 of the Standard Specifications and Highway Standard 601.101)
3. Existing slopewall ditches shall be broom cleaned. Cost included with Slope Wall 4 inch.



**SECTION Z-Z**

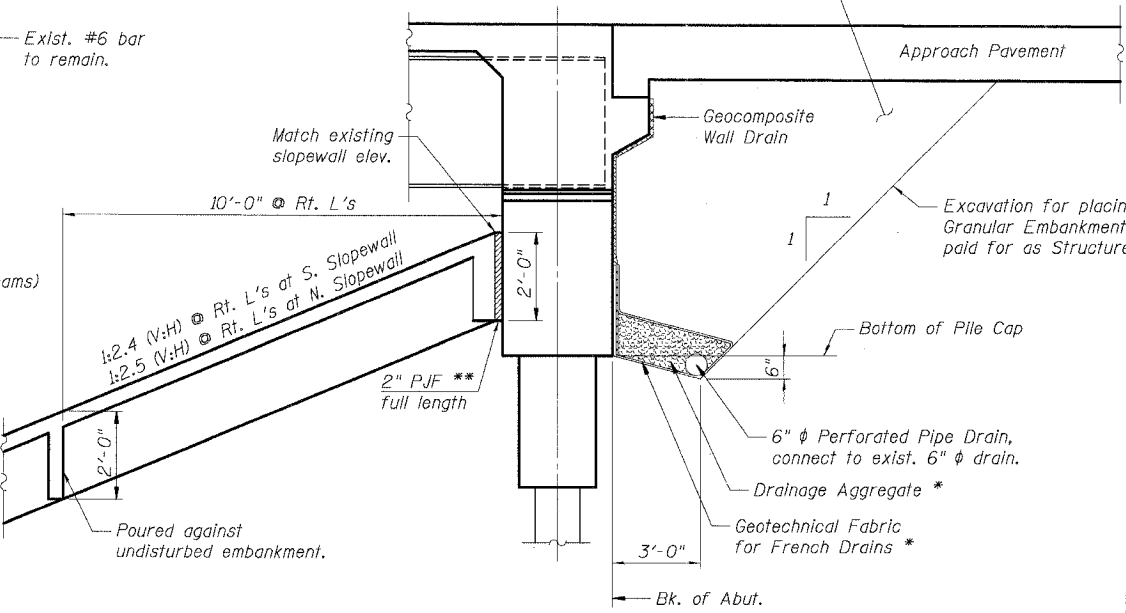
(Showing limits of Removal of Existing Concrete Deck at existing beams)



\*\* Cost included with Slopewall 4 inch.

**SECTION THRU SLOPEWALL AND ABUTMENT BACKFILL**

Backfill with uncompacted Porous Granular Embankment, Special by Bridge Contractor after superstructure is in place.



\* Included with Pipe Underdrains for Structures, 6".

**SUGGESTED SEQUENCE OF CONSTRUCTION**

(STAGE I, AT NORTH ABUTMENT ONLY)

1. Place proposed drainage pipe through existing CMP culvert and fill annular space per drainage plans.
2. Construct drainage structure(s) and build embankment per roadway plans.
3. Remove existing deck and portion of abutment diaphragms east of stage construction line. Remove wingwalls on east side.
4. Drive test pile and production pile to clear existing culvert.
5. Drill and grout dowel bars into existing abutment.
6. Construct east abutment widening and east wingwall.
7. Place bearings and steel framing.
8. Construct the bridge deck and integral backwall to the stage construction line.
9. Backfill behind new abutments.
10. Construct approach pavements to the stage construction line.
11. Groove the deck and apply the protective coat.

**STATION 167+72.58  
BUILT 200\_ BY  
STATE OF ILLINOIS  
F.A.I. RT. 55 SEC. 2006-031 BY  
LOADING HS20 & ALT.  
STR. NO. 099-0312**

**NAME PLATE**

See Std. 515001

Note: See Sht. SA-8 for location

**SHT. SA-3 OF 21**

REVISIONS	
NAME	DATE

ILLINOIS DEPARTMENT OF TRANSPORTATION  
FAI ROUTE 55 (OVER CSX RR AND SUNNYLAND DRAIN)  
BRIDGE WIDENING  
SB I-55 OVER CSX RAILROAD, S.N. 099-0312  
STA. 167+72.58, SECTION 2006-031 BY  
WILL COUNTY

**SLOPEWALL & ABUTMENT  
BACKFILL DETAILS  
PROFILE GRADES**

SCALE: DATE 07/07/06 DRAWN BY MDB CHECKED BY MJK

**TENG** TENG & ASSOCIATES, INC. ENGINEERS/ARCHITECTS/PLANNERS CHICAGO, ILLINOIS

PLOT DATE = 07/07/06  
 PLOT SCALE = AS SHOWN  
 USER NAME = #15888  
 SA DOCUMENT 0228168A STRUCTURE/CONCRETE/ABUT.SHT  
 GARCIAAZ  
 7-05-2006 8:31:34