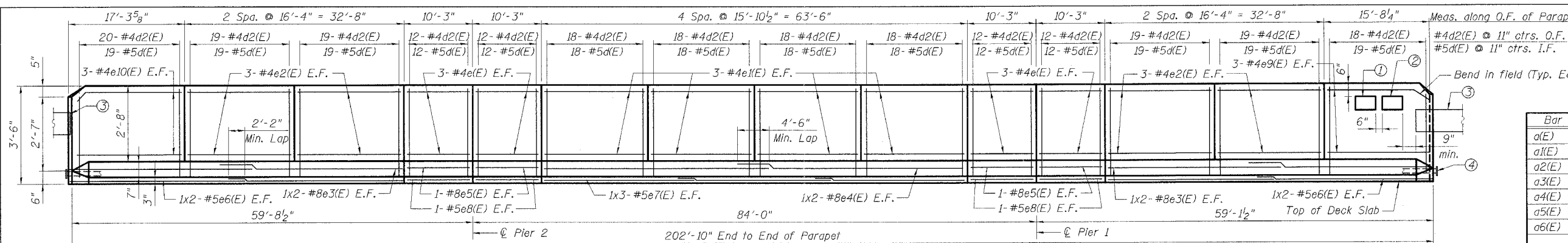


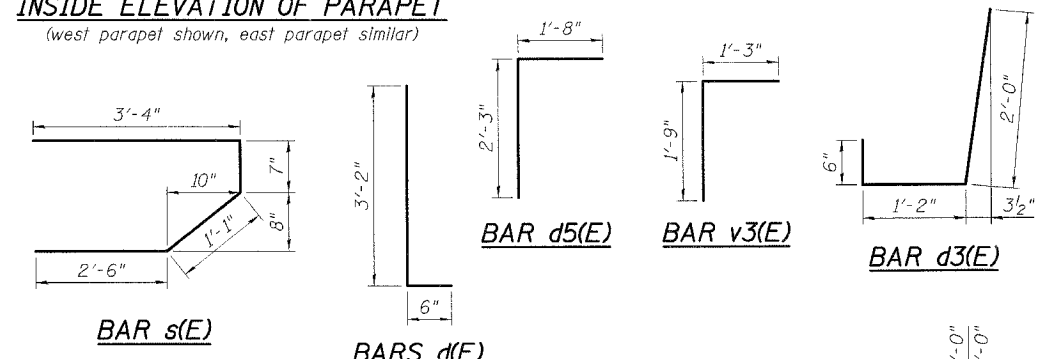
F.A.I. RTE.	SECTION	COUNTY	TOTAL SHEETS	SHEET NO.
55	2006-031 BY	WILL	137	71
STA.		TO STA.		
FED. ROAD DIST. NO.		ILLINOIS FED. AID PROJECT		



BAR LIST

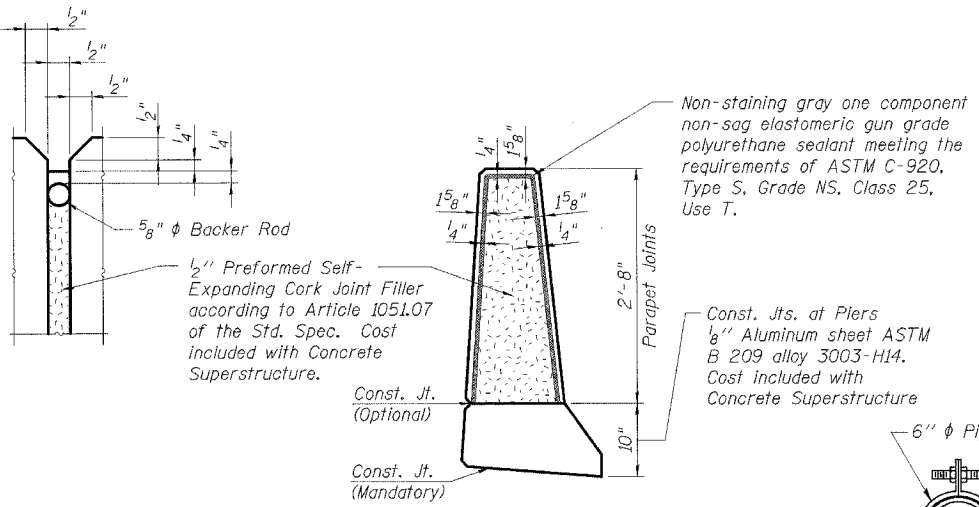
Bar	No.	Size	Length	Shape
a(E)	406	#5	29'-8"	—
a1(E)	288	#5	29'-1"	—
a2(E)	402	#6	4'-6"	—
a3(E)	4	#5	33'-10"	—
a4(E)	406	#5	33'-10"	—
a5(E)	288	#5	33'-3"	—
a6(E)	4	#5	38'-2"	—
b(E)	612	#5	24'-6"	—
b1(E)	128	#6	42'-1"	—
b2(E)	472	#5	27'-3"	—
d(E)	468	#5	3'-8"	—
d1(E)	468	#5	2'-5"	—
d2(E)	468	#4	3'-8"	—
d3(E)	468	#4	3'-8"	—
d4(E)	12	#5	2'-5"	—
d5(E)	88	#5	3'-11"	—
d6(E)	16	#6	3'-8"	—
e(E)	48	#4	10'-0"	—
e1(E)	48	#4	15'-8"	—
e2(E)	48	#4	16'-1"	—
e3(E)	16	#8	26'-6"	—
e4(E)	8	#8	33'-10"	—
e5(E)	16	#8	10'-0"	—
e6(E)	16	#5	25'-6"	—
e7(E)	12	#5	22'-6"	—
e8(E)	16	#5	10'-0"	—
e9(E)	12	#4	15'-11"	—
e10(E)	12	#4	17'-0"	—
m(E)	4	#6	8'-5"	—
m1(E)	4	#6	9'-6"	—
m2(E)	4	#6	7'-11"	—
m3(E)	2	#6	3'-2"	—
m4(E)	4	#6	6'-4"	—
m5(E)	4	#6	2'-10"	—
m6(E)	7	#6	19'-10"	—
m7(E)	14	#6	4'-7"	—
m8(E)	3	#6	20'-4"	—
s(E)	48	#5	7'-5"	—
s1(E)	48	#5	10'-2"	—
v3(E)	44	#5	3'-0"	—

INSIDE ELEVATION OF PARAPET
(west parapet shown, east parapet similar)

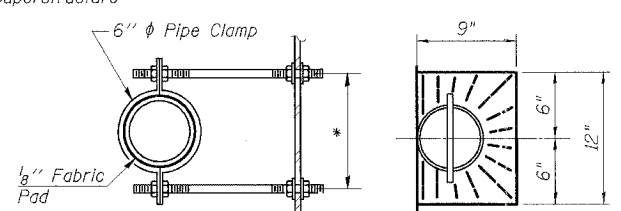


- ① Relocated name plate at west parapet.
- ② Name plate location at west parapet For detail, see Sht. SA-3.
- ③ Traffic Barrier (See roadway plans.) See Details S & T on Sht. SA-7 for anchor details.
- ④ Cap conduits each end. (Typ.) Cost included with Conduit Embedded in Structure, 2" dia., Galvanized Steel.

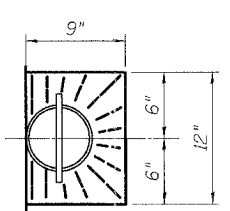
PARAPET JOINT DETAILS



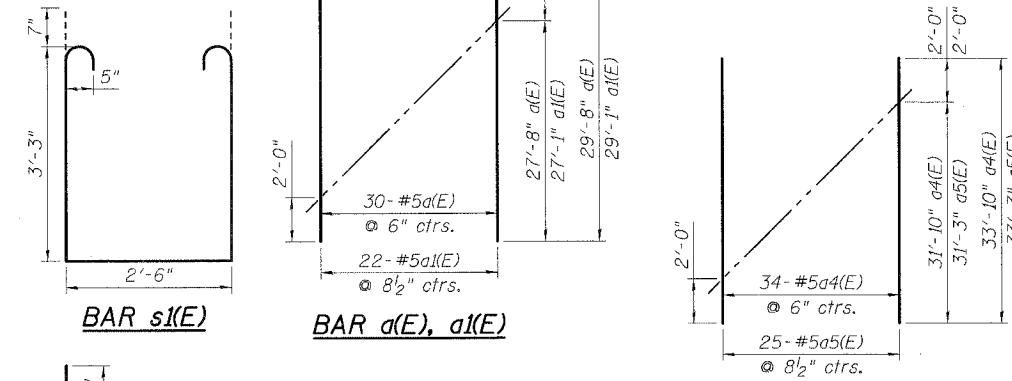
SECTION D-D



TOP PLAN



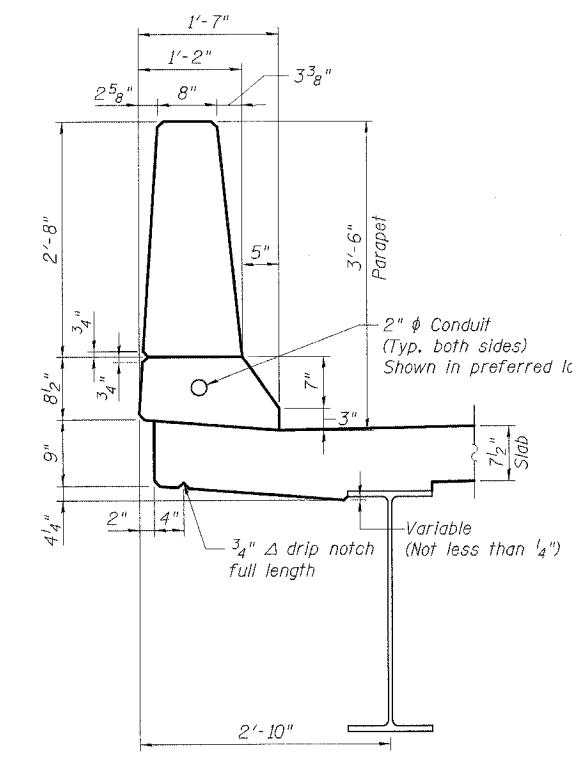
BAR a4(E) & a5(E)



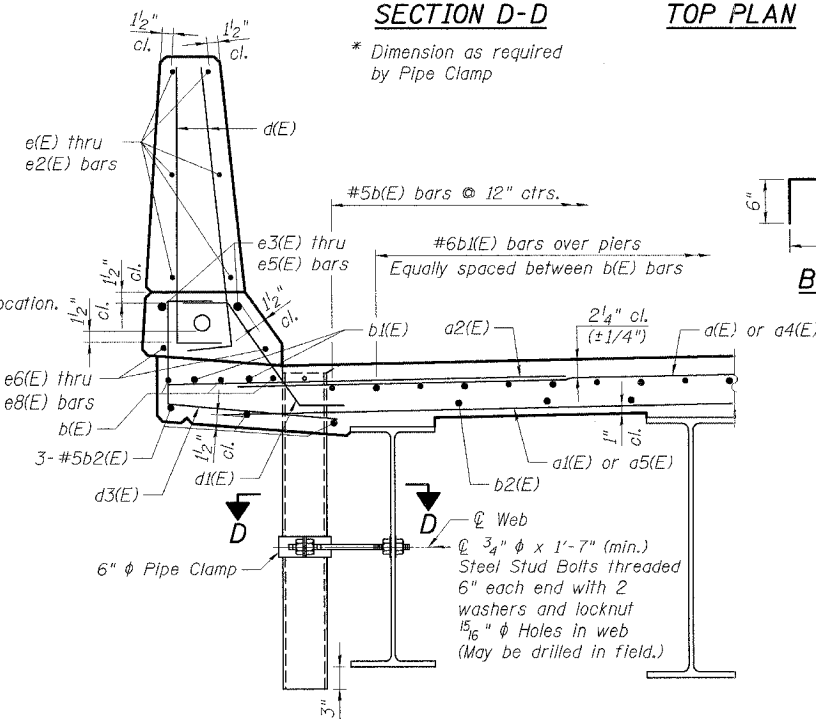
Notes:

1. Work this sheet with sheets SA-7, SA-9, & SA-10.
2. Reinforcement bars designated (E) shall be epoxy coated.
3. Bars indicated thus 2x3-#5 etc. indicates 2 lines of bars with 3 lengths per line.
4. E.F. = Each Face, I.F. = Inside Face, O.F. = Outside Face
5. All edges shall have a 3/4" chamfer unless noted otherwise.

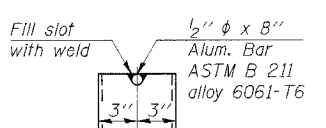
SECTION THRU PARAPET
(Showing Geometry)



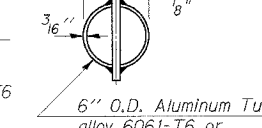
SECTION THRU PARAPET
(Showing Reinforcement)



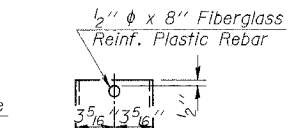
ALUMINUM TUBE



TOP PLAN



FIBERGLASS PIPE



BILL OF MATERIAL

Item	Unit	Total
Concrete Superstructure	Cu. Yd.	395.4
Reinforcement Bars, Epoxy Coated	Pound	97,910
Bar Splicers	Each	816

ILLINOIS DEPARTMENT OF TRANSPORTATION
 I-55 OVER CSX RR AND SUNNYLAND DRAIN
 BRIDGE WIDENING
 SB I-55 OVER CSX RAILROAD, S.N. 099-0312
 STA. 167+72.58, SECTION 2006-031 BY
 WILL COUNTY

PARAPET DETAILS

SHT. SA-8 OF 21

REVISIONS	
NAME	DATE

SCALE: DRAWN BY MJB
 DATE 08/08/06 CHECKED BY MJK



PLOT DATE = 08/08/06
 FILE NAME = S:\PROJECTS\2006\2006-031\SA-8.DWG
 PLOT SCALE = 1/8" = 1'-0"
 USER NAME = MJB