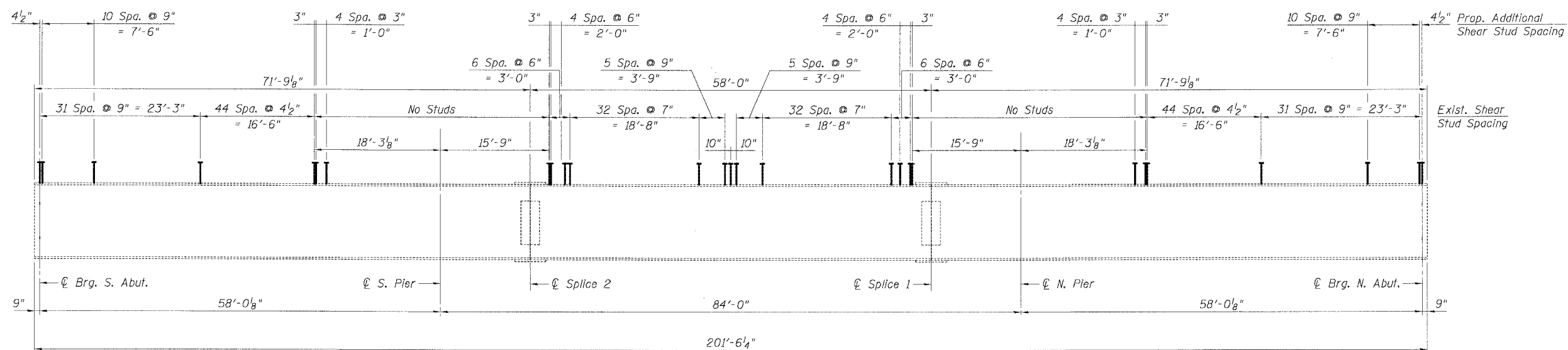


CONTRACT NO. 60B85				
F.A.I. RTE.	SECTION	COUNTY	TOTAL SHEETS	SHEET NO.
55	2006-031 BY	WILL	137	75
STA.		TO STA.		
FED. ROAD DIST. NO.	ILLINOIS	FED. AID PROJECT		



**EXISTING BEAMS**  
(Beams 2 thru 7)

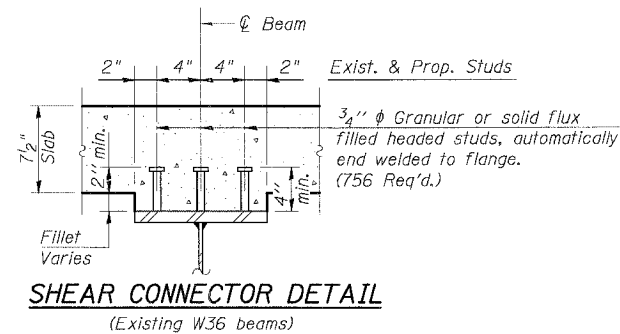
723 exist. shear studs per girder  
126 prop. additional shear studs per girder

**Notes:**

1. Work this sheet with Sht. SA-11.
2. Prop. additional shear studs shall be welded to existing beams as indicated.
3. Exist. studs that are damaged during removal of exist. deck are to be removed, remaining welds ground smooth, and new studs welded to replace the damaged studs. The cost for such work shall be included in the cost for Removal of Existing Concrete Deck.

**BILL OF MATERIAL**

Item	Unit	Total
Stud Shear Connectors	Each	756



**SHEAR CONNECTOR DETAIL**  
(Existing W36 beams)

**SHT. SA-11A OF 21**

REVISIONS	
NAME	DATE

ILLINOIS DEPARTMENT OF TRANSPORTATION  
FAI ROUTE 55 (OVER CSX RR AND SUNNYLAND DRAIN)  
BRIDGE WIDENING  
SB I-55 OVER CSX RAILROAD, S.N. 099-0312  
STA. 167+72.58, SECTION 2006-031 BY  
WILL COUNTY

**EXISTING BEAM ELEVATION  
SHEAR STUD DETAILS**

SCALE: DRAWN BY MDB  
DATE 07/07/06 CHECKED BY MJK

**TENG**

TENG & ASSOCIATES, INC.  
ENGINEERS/ARCHITECTS/PLANNERS  
CHICAGO, ILLINOIS

PLOT DATE = 07/07/06  
 PLOT SCALE = 1/8" = 1'-0"  
 PLOT USER = MJK  
 S:\DOCUMENT\02351081\STRUCT\CON\F091A082.SHT  
 (ARCC)ARZ