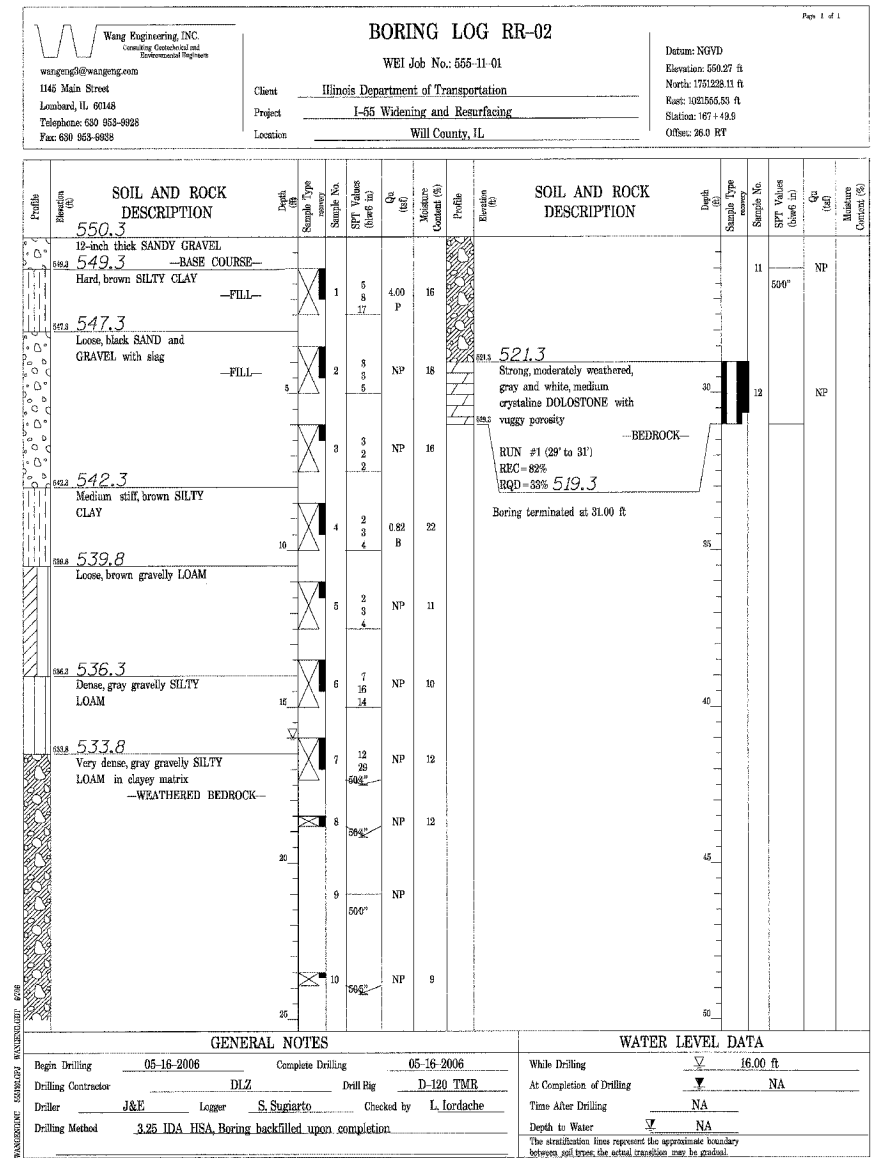
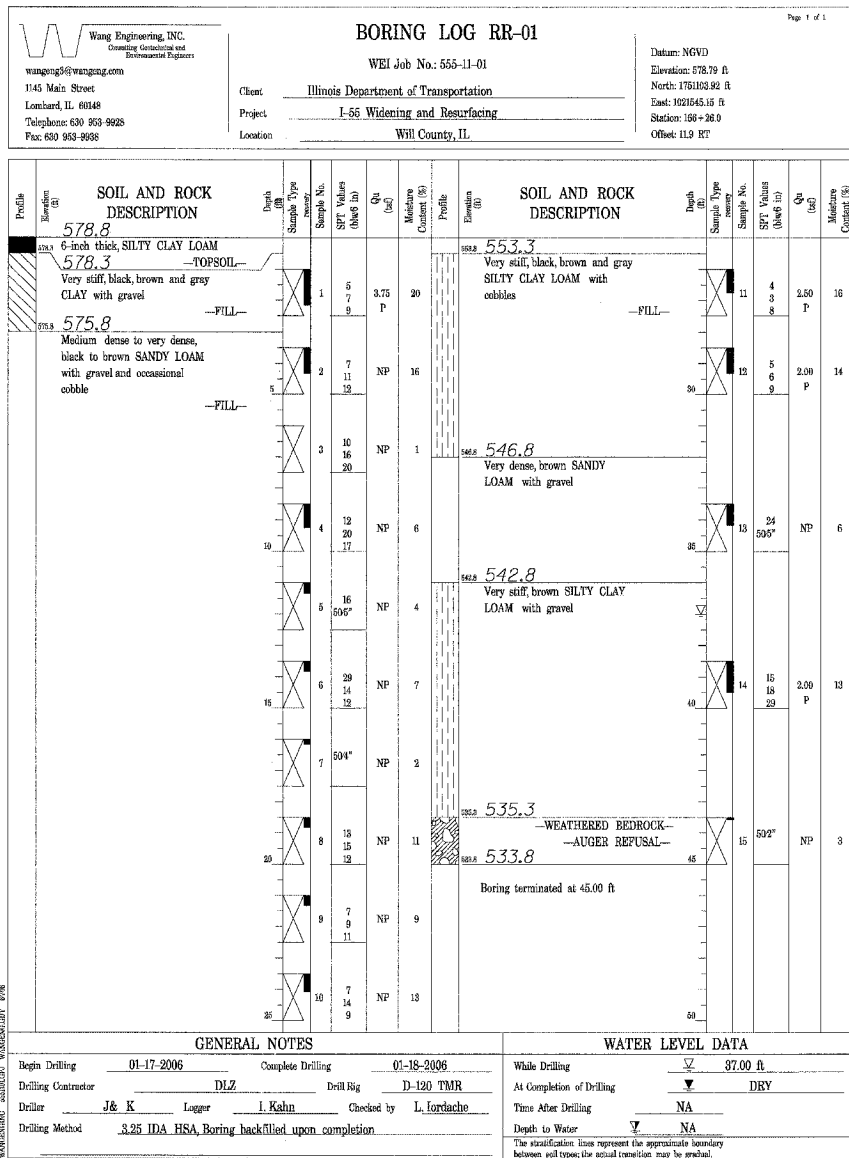
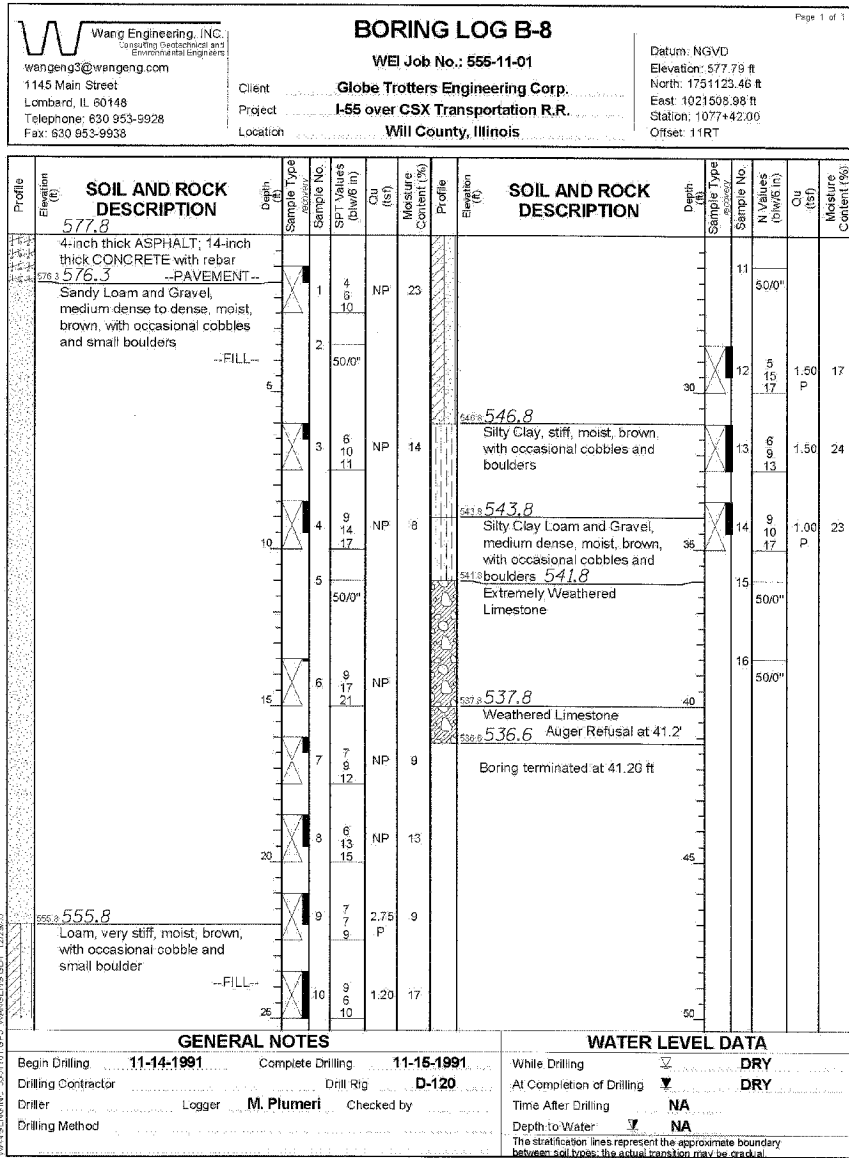


Table with columns: F.A.I. RTE., SECTION, COUNTY, TOTAL SHEETS, SHEET NO. Values: 55, 2006-031 BY, WILL, 137, 84

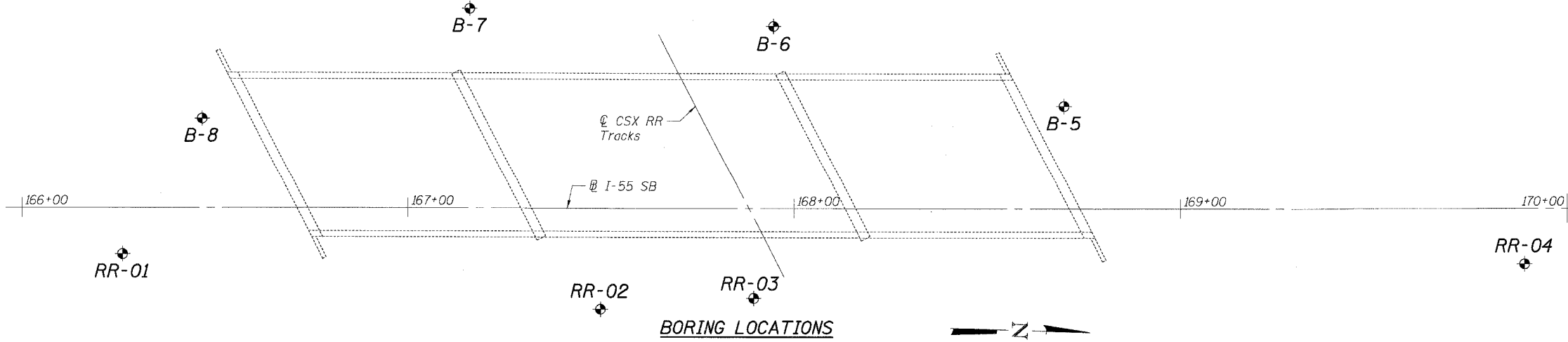
EXISTING BORING B-8

BORING RR-01

BORING RR-02



Vertical text on the left side containing project information and drawing details.



Vertical text at the bottom left corner containing plot and user information.

Table with columns: REVISIONS, NAME, DATE. Includes header and a grid for revisions.

ILLINOIS DEPARTMENT OF TRANSPORTATION
FA1 ROUTE 55 (OVER CSX RR AND SUNNYLAND DRAIN)
BRIDGE WIDENING
SB I-55 OVER CSX RAILROAD, S.N. 099-0312
STA. 167+72.59, SECTION 2006-031 BY
WILL COUNTY

BORING LOGS 2
SCALE:
DATE: 07/07/06
DRAWN BY: MDB
CHECKED BY: MJK
TENG & ASSOCIATES, INC.
ENGINEERS/ARCHITECTS/PLANNERS
CHICAGO, ILLINOIS