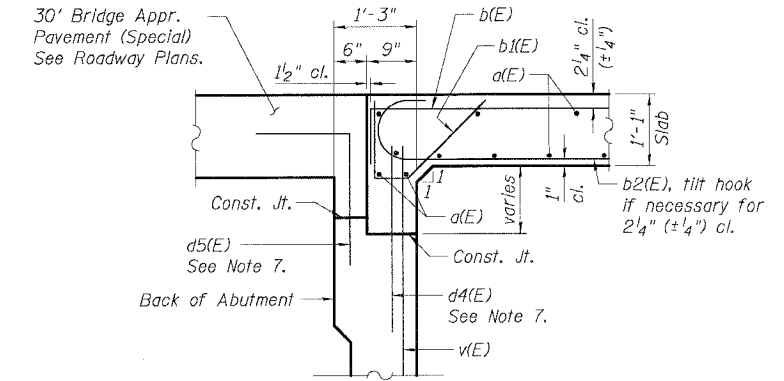
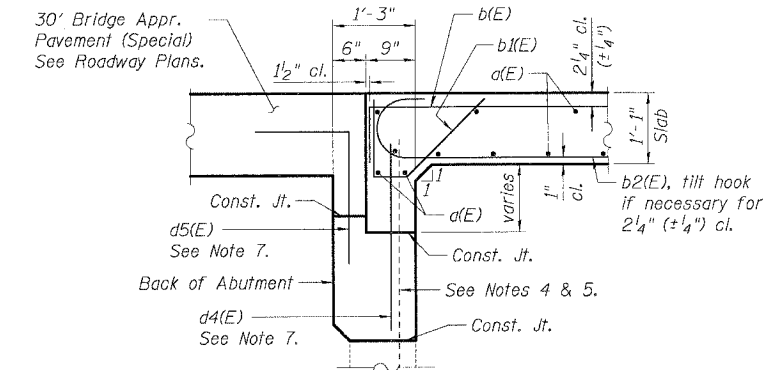
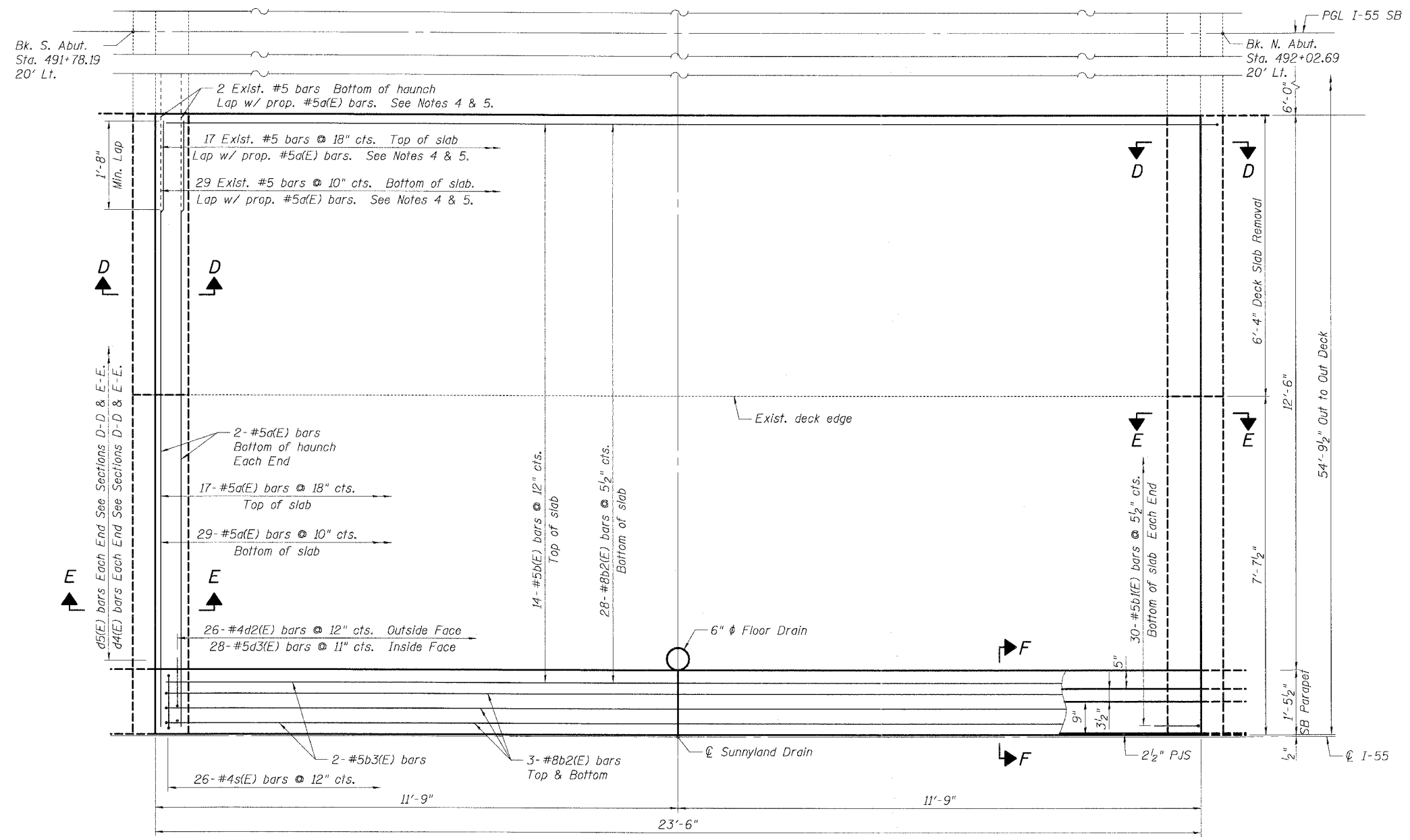


F.A.I. RTE.	SECTION	COUNTY	TOTAL SHEETS	SHEET NO.
55	2006-031 BY	WILL	137	90
STA.		TO STA.		
FEB. ROAD DIST. NO.		ILLINOIS FED. AID PROJECT		



- Notes:**
1. Work this sheet with Sht. SB-7 & SB-8.
 2. For Section F-F, see Sht. SB-7.
 3. See Sht. SB-3 for existing deck slab removal.
 4. Existing reinforcement extending out of abutment wall or deck shall be cleaned, straightened, and incorporated into the new construction as indicated. Cost shall be included with Reinforcement Bars, Epoxy Coated.
 5. Any reinforcement bars that are damaged during concrete removal shall be replaced with an approved bar splicer or anchorage system. Cost shall be included with Concrete Removal.
 6. Reinforcement bars designated (E) shall be epoxy coated.
 7. d4(E) and d5(E) bars are billed with abutments.

SHT. SB-5 OF 13

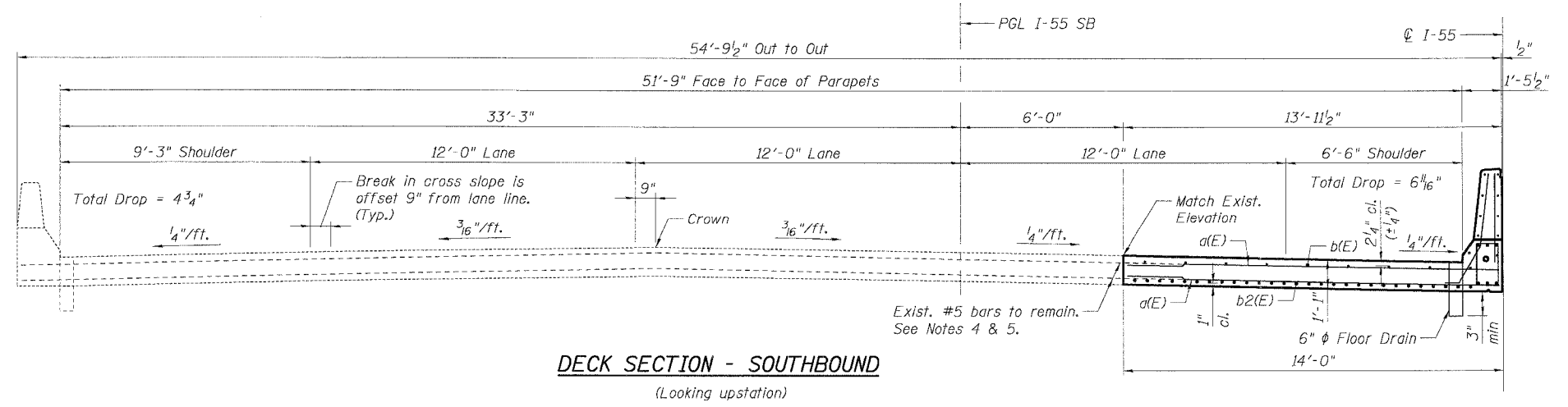
REVISIONS	
NAME	DATE

ILLINOIS DEPARTMENT OF TRANSPORTATION
 FAI ROUTE 55 (OVER CSX RR AND SUNNYLAND DRAIN)
 BRIDGE WIDENING
 NB & SB I-55 OVER SUNNYLAND DRAIN, S.N. 099-0014 & 099-0015
 STA. 491+90.44, SECTION 2006-031 BY
 WILL COUNTY

SOUTHBOUND DECK

SCALE: DRAWN BY MDB
 DATE 07/01/06 CHECKED BY MJK

TENG TENG & ASSOCIATES, INC.
 ENGINEERS/ARCHITECTS/PLANNERS
 CHICAGO, ILLINOIS



PLOT DATE = 07/01/06
 PLOT SCALE = 1" = 12'-0"
 USER NAME = BUSER88
 \P091001\002\002\002.DWG...
 7-25-2006, 8:33:49
 GARGIAAZ