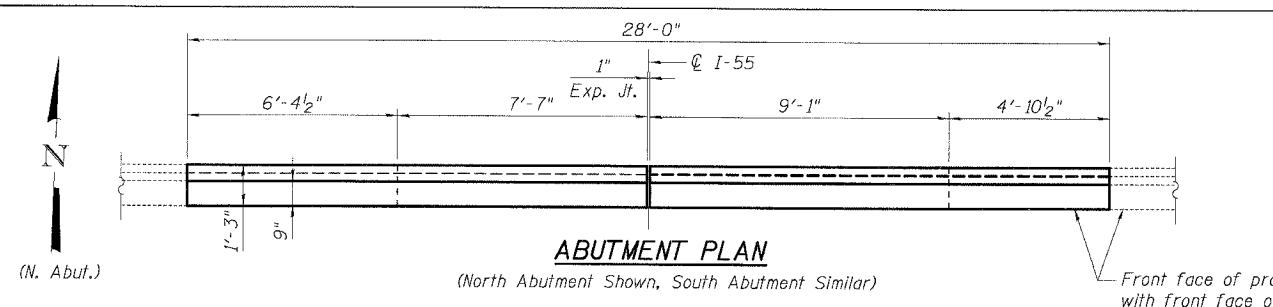


F.A.I. RTE.	SECTION	COUNTY	TOTAL SHEETS	SHEET NO.
55	2006-031	WILL	137	95
STA.		TO STA.		
FED. ROAD DIST. NO.		ILLINOIS FED. AID PROJECT		



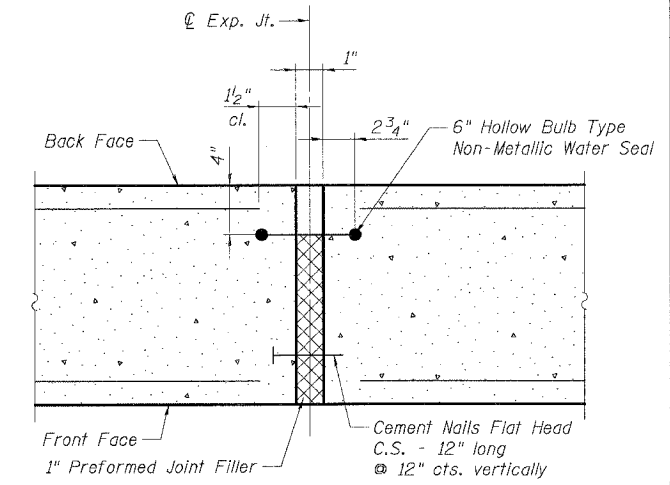
ABUTMENT PLAN

(North Abutment Shown, South Abutment Similar)

Front face of prop. abutment in plane with front face of exist. abutment.

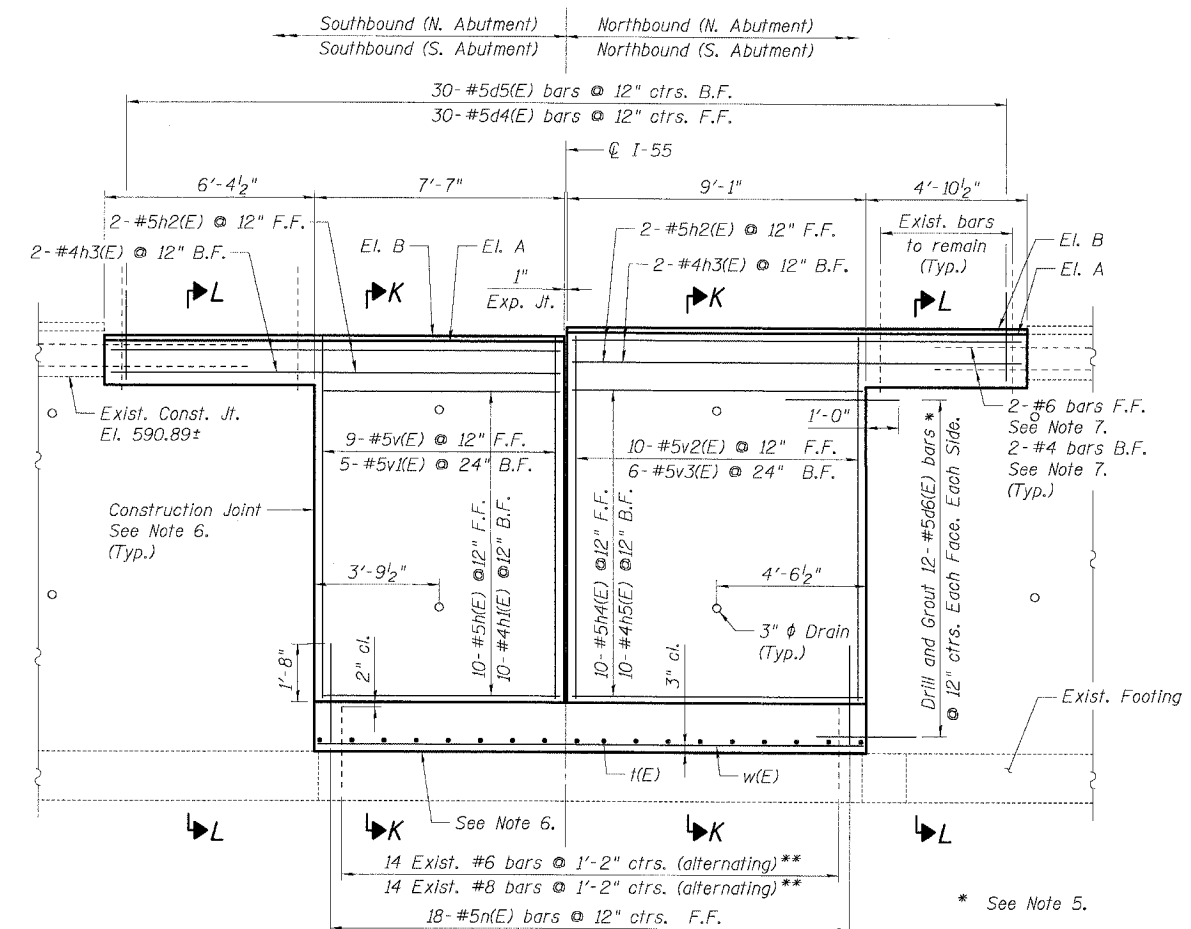
ABUTMENT SEAT ELEVATIONS
(for N. Abutment and S. Abutment)

	El. A	El. B
Southbound (N. Abutment)	591.98	592.14
Northbound (N. Abutment)	592.26	592.42
Southbound (S. Abutment)	591.98	592.14
Northbound (S. Abutment)	592.26	592.42



EXPANSION JOINT DETAIL

Cost of non-metallic water seal, P.J.F. and cement nails are included with Concrete Structures.



ABUTMENT ELEVATION

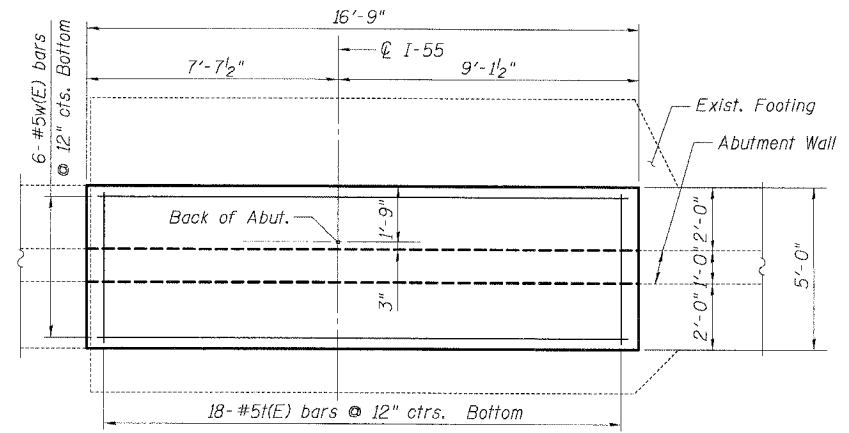
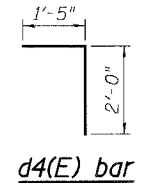
(North Abutment Shown, South Abutment Similar)

- Notes:**
- For drainage details, see Sht. SB-3.
 - See Sht. SB-11 for Sections K-K & L-L.
 - F.F. = Front Face
B.F. = Back Face
E.F. = Each Face
 - Incorporate exist. bars into prop. footing and cut to provide 2" clear cover inside prop. footing. Cost included in Reinforcement Bars, Epoxy Coated.
 - The cost of drilling and grouting bars is to be included in the unit price for Reinforcement Bars, Epoxy Coated.
 - The existing concrete surface against which concrete will be poured shall be clean and free of laitance and shall be roughened to a full amplitude of 1/4". Cost included with Concrete Structures.
 - Existing reinforcement extending out of exist. footing and abutment shall be cleaned, straightened, and incorporated into the new construction as indicated. Cost included with Reinforcement Bars, Epoxy Coated.
 - Reinforcement bars designated (E) shall be epoxy coated.
 - Maximum applied bearing pressure, Q_{max} = 2,870 psf.
 - All edges shall have a 3/4" chamfer unless noted otherwise.

BAR LIST

(For Each Abutment)

Bar	No.	Size	Length	Shape
d4(E)	30	#5	2'-0"	—
d5(E)	30	#5	3'-5"	└
d6(E)	48	#5	3'-5"	—
h(E)	10	#5	7'-3"	—
h1(E)	10	#4	7'-3"	—
h2(E)	4	#5	13'-8"	—
h3(E)	4	#4	13'-8"	—
h4(E)	10	#5	8'-9"	—
h5(E)	10	#4	8'-9"	—
n(E)	18	#5	3'-0"	—
l(E)	18	#5	4'-8"	—
v(E)	9	#6	11'-11"	—
v1(E)	5	#4	11'-11"	—
v2(E)	10	#6	12'-2"	—
v3(E)	6	#4	12'-2"	—
w(E)	6	#5	16'-5"	—



FOOTING PLAN

(North Abutment Shown, South Abutment Similar)

BILL OF MATERIAL

(For Each Abutment)

Item	Unit	Total
Concrete Structures	Cu. Yd.	12.6
Reinforcement Bars, Epoxy Coated	Pound	1,390
Structure Excavation	Cu. Yd.	46

SHT. SB-10 OF 13

REVISIONS	
NAME	DATE

ILLINOIS DEPARTMENT OF TRANSPORTATION
FAI ROUTE 55 (OVER CSX RR AND SUNNYLAND DRAIN)
BRIDGE WIDENING
NB & SB I-55 OVER SUNNYLAND DRAIN, S.N. 099-0014 & 099-0015
STA. 491+90.44, SECTION 2006-031 BY
WILL COUNTY

ABUTMENT PLANS & ELEVATION

SCALE: DATE 07/07/06 DRAWN BY MJB CHECKED BY MJK



TENG & ASSOCIATES, INC.
ENGINEERS/ARCHITECTS/PLANNERS
CHICAGO, ILLINOIS

PLT DATE = 07/07/06
PLT SCALE = AS SHOWN
USER NAME = MJB
7-05-2006 01:34:18
G:\DOCUMENTS\2006\2006\STRUCT\CONV\ABUT\ABUT1.SHT