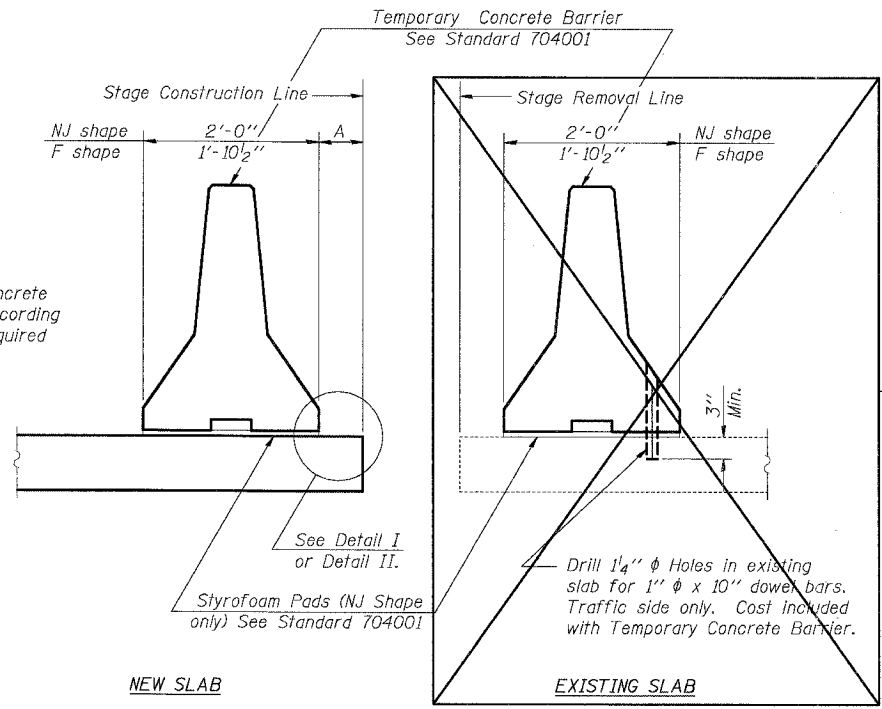


F.A.I. RTE.	SECTION	COUNTY	TOTAL SHEETS	SHEET NO.
55	2006-031 BY	WILL	137	97
STA.		TO STA.		
FED. ROAD DIST. NO.	ILLINOIS	FED. AID PROJECT		

When "A" is 3'-6" or less, the temporary concrete barrier shall be anchored to the new slab according to Detail I or Detail II. No anchorage is required when "A" is greater than 3'-6".



Note: Holes shall not be drilled in existing slab to remain in service. Existing slab to remain in service shall be treated as a "NEW SLAB". Dimension A > 3'-6" (see Sht. SB-2).

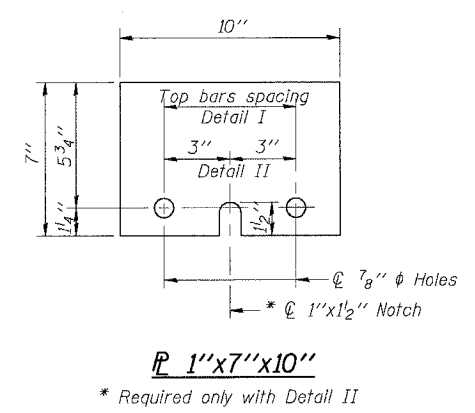
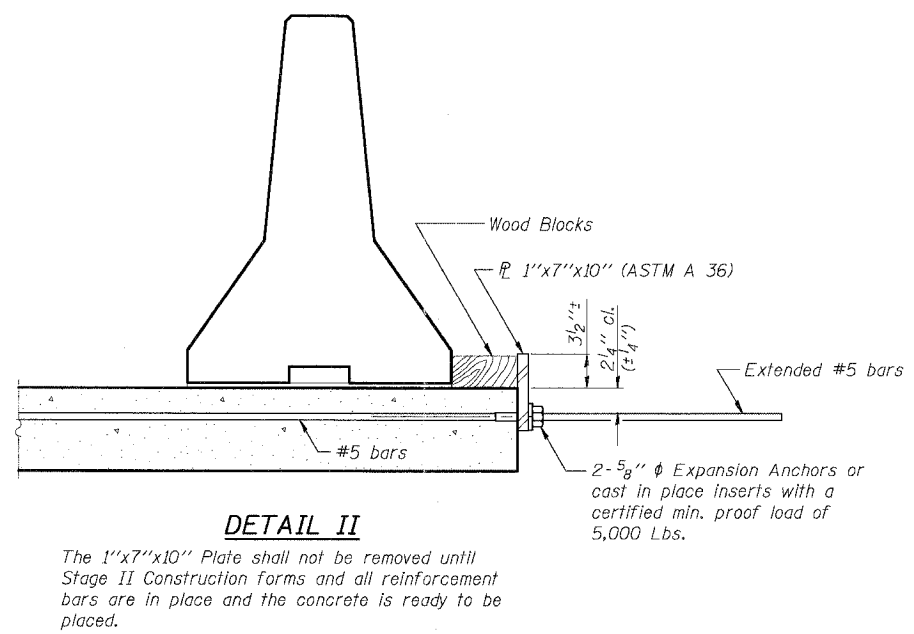
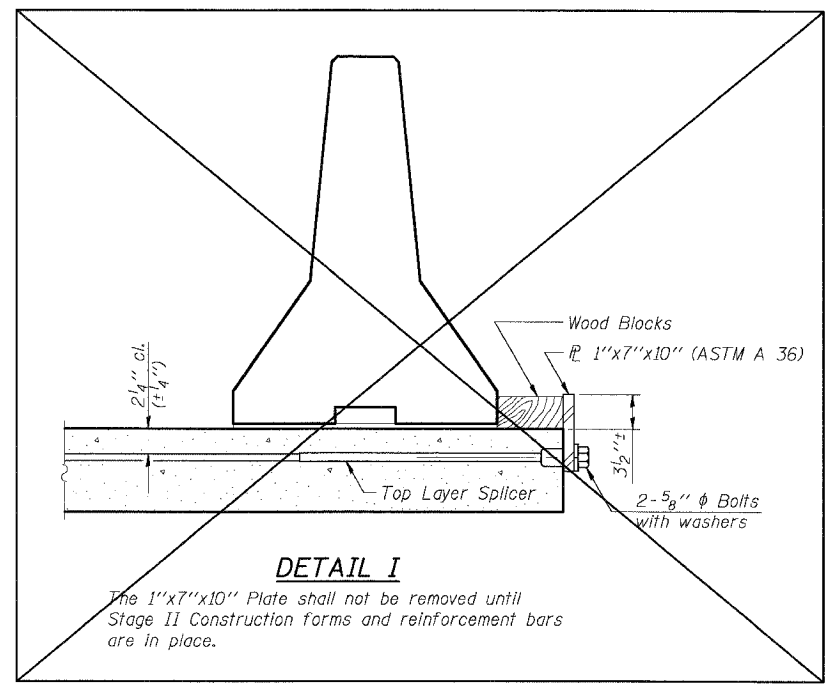
NOTES

Detail I - With Bar Splicer or Couplers:
Connect one (1) 1"x7"x10" steel \bar{P} to the top layer of couplers with 2-5/8" ϕ bolts screwed to coupler at approximate \bar{C} of each barrier panel.

Detail II - With Extended Reinforcement Bars:
Connect one (1) 1"x7"x10" steel \bar{P} to the concrete slab with 2-5/8" ϕ Expansion Anchors or cast in place inserts spaced between the top layer of reinforcement at approximate \bar{C} of each barrier panel.

Cost of anchorage is included with Temporary Concrete Barrier.

SECTIONS THRU SLAB



TEMPORARY CONCRETE BARRIER FOR STAGE CONSTRUCTION

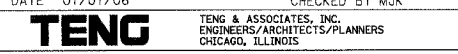
ILLINOIS DEPARTMENT OF TRANSPORTATION
FAI ROUTE 55 (OVER CSX RR AND SUNNYLAND DRAIN)
BRIDGE WIDENING
NB & SB 1-55 OVER SUNNYLAND DRAIN, S.N. 099-0014 & 099-0015
STA. 491+90.44, SECTION 2006-031 BY
WILL COUNTY

TEMPORARY CONCRETE BARRIER

SHT. SB-12 OF 13

REVISIONS	
NAME	DATE

SCALE: DRAWN BY MDB
DATE 07/07/06 CHECKED BY MJK



PLOT DATE = 08/07/06
 PLOT SCALE = AS SHOWN
 USER NAME = USER
 7-85-2886, 8:34:28
 S:\DOCUMENT\02318181\STRUCT\CONV\SB12\41.SHT