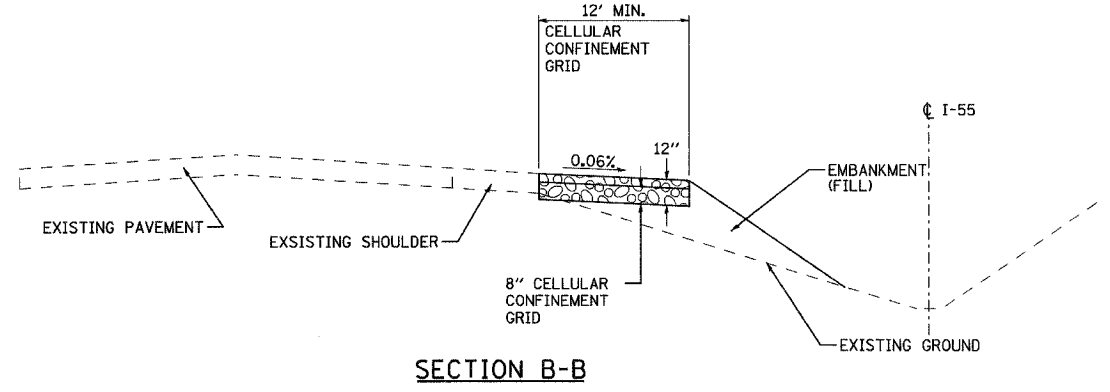
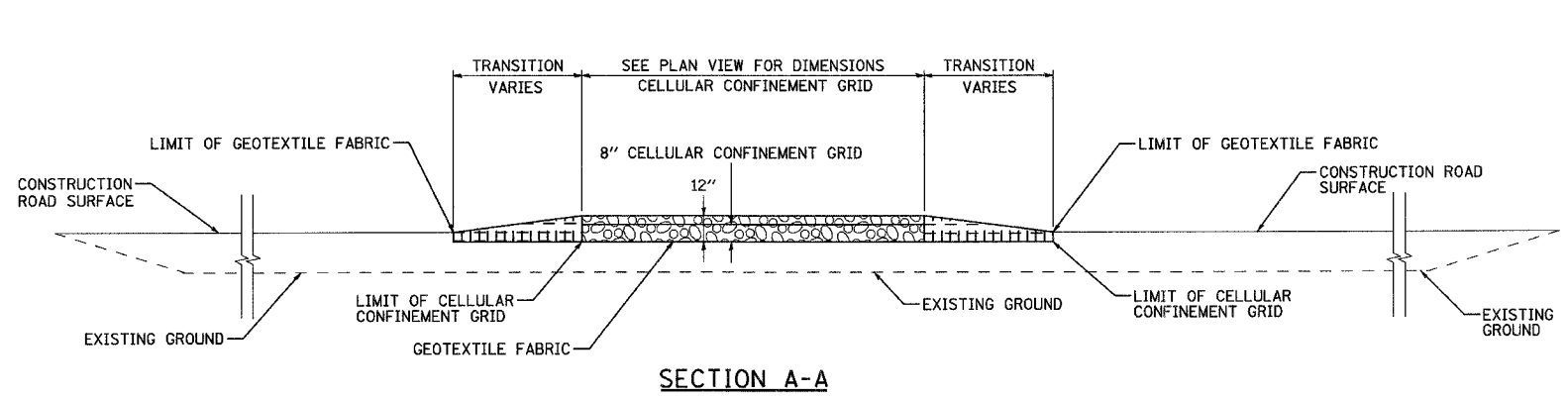
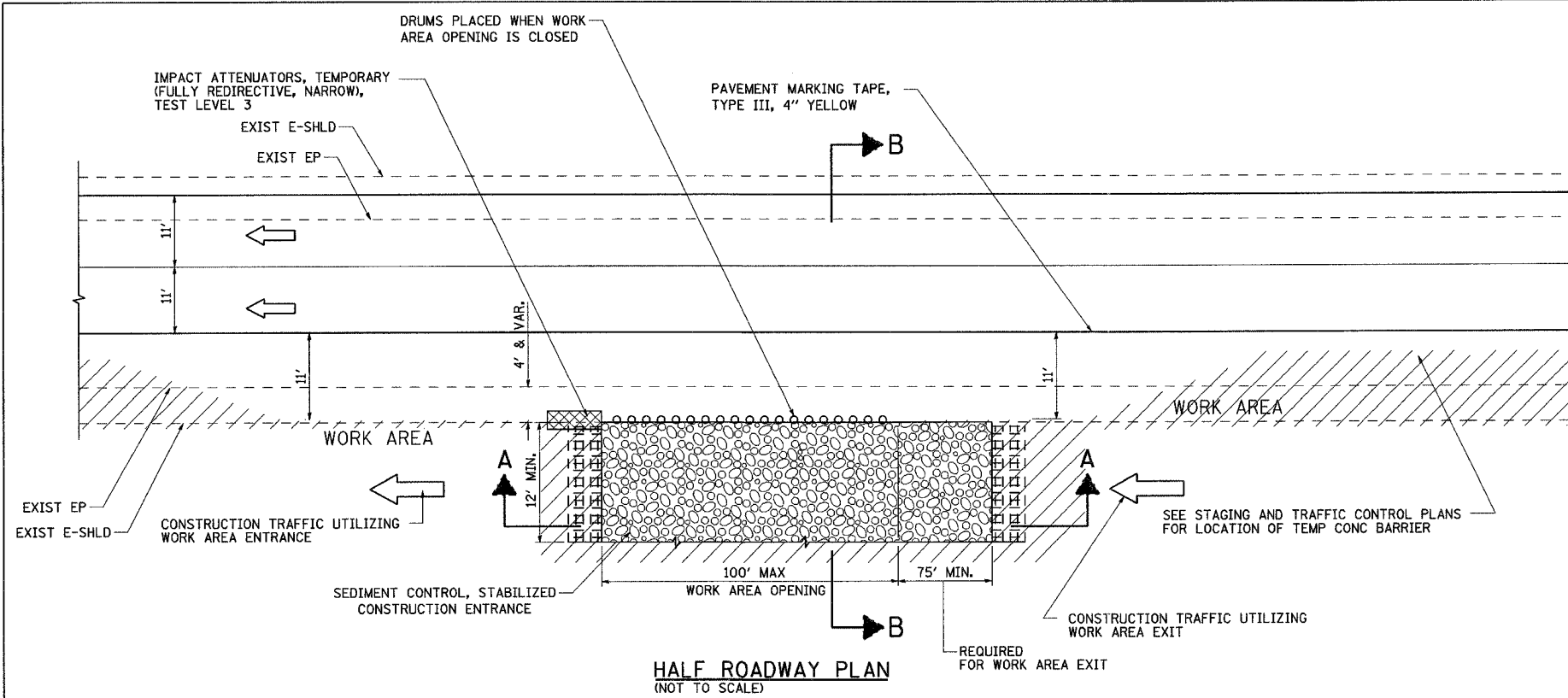
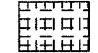
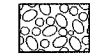
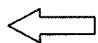
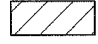



F.A.P. RTE.	SECTION	COUNTY	TOTAL SHEETS	SHEET NO.
55	2006-032 BY	WILL	505	171
STA.		TO STA.		
FED. ROAD DIST. NO.	ILLINOIS FED. AID PROJECT			
EC 07 OF 07				



LEGEND:

-  COURSE AGGREGATE CA-3
-  SEDIMENT CONTROL, STABILIZED CONSTRUCTION ENTRANCE
-  DIRECTION OF TRAFFIC
-  WORK AREA
-  IMPACT ATTENUATOR

NOTES:

1. THE EXISTING BITUMINOUS SHOULDER SHALL REMAIN IN THE PLACE UNTIL THE STABILIZED CONSTRUCTION ENTRANCE IS REMOVED.
2. EXISTING DITCH DRAINAGE TO BE MAINTAINED.
3. THE COST OF ANY COURSE AGGREGATE CA-3 USED FOR TRANSITION FROM THE CONSTRUCTION ROAD TO THE STABILIZED CONSTRUCTION ENTRANCE WILL NOT BE PAID FOR SEPARATELY, BUT SHALL BE INCLUDED IN THE UNIT PRICE BID FOR "SEDIMENT CONTROL, STABILIZED CONSTRUCTION ENTRANCE".
4. SEE STAGING AND TRAFFIC CONTROL DETAIL FOR WORK AREA DRIVEWAY ENTRANCE/EXIT.
5. THE SEDIMENT CONTROL, STABILIZED CONSTRUCTION ENTRANCE DIMENSIONS SHALL BE APPROVED BY THE ENGINEER.

PLOT DATE = 7/19/2006
 FILE NAME = WFILE1
 PLOT SCALE = 1/8"=1'-0"
 REFERENCE = WRP4

PARSONS BRINCKERHOFF
 SMITH ENGINEERING CONSULTANTS, INC.
 www.smithengineering.com

REVISIONS	
NAME	DATE

ILLINOIS DEPARTMENT OF TRANSPORTATION
 FAI ROUTE 55
 US 30 (PLAINFIELD ROAD) TO LILY CACHE SLOUGH
**EROSION AND SEDIMENT CONTROL
 DETAIL - STABILIZED CONSTRUCTION
 ENTRANCE**
 SCALE: N.T.S. DRAWN BY: JPA
 DATE: 07/21/2006 CHECKED BY: TEH