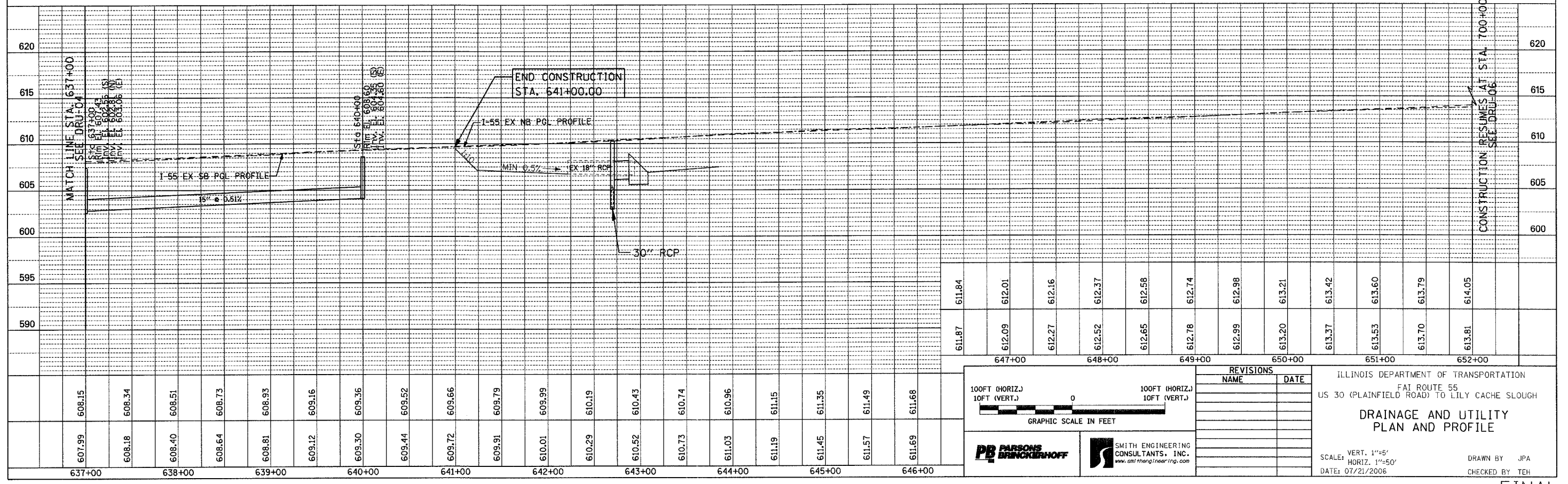
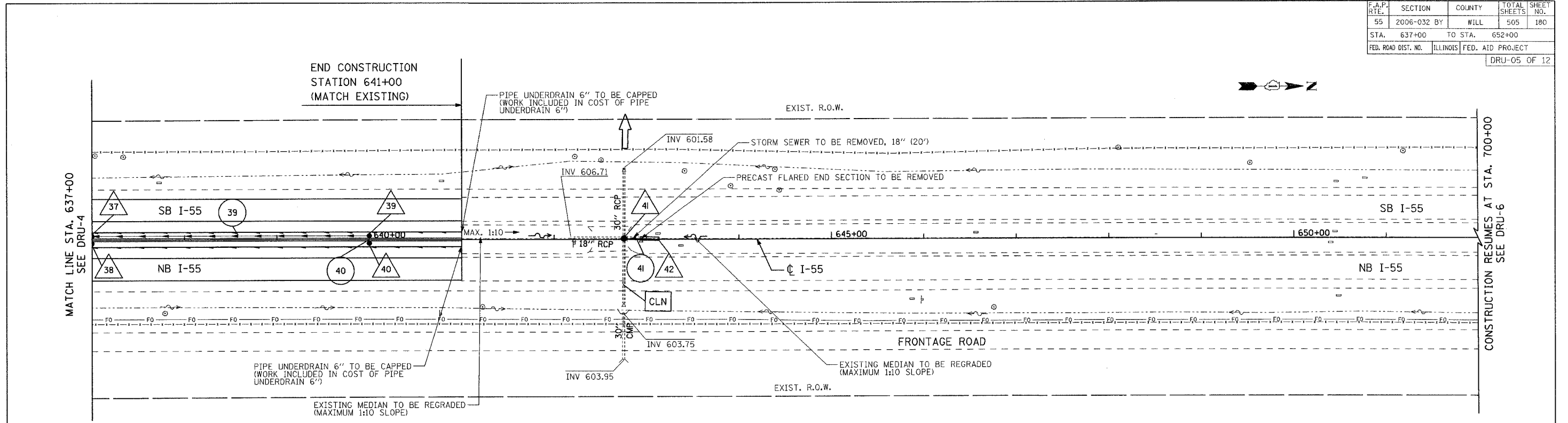


F.A.P. RTE.	SECTION	COUNTY	TOTAL SHEETS	SHEET NO.
55	2006-032 BY	WILL	505	180
STA.	637+00	TO STA.	652+00	
FED. ROAD DIST. NO.	ILLINOIS	FED. AID PROJECT		
				DRU-05 OF 12



607.99	608.15	608.34	608.51	608.73	608.93	609.16	609.36	609.52	609.66	609.79	609.99	610.19	610.43	610.74	611.03	611.15	611.35	611.49	611.68
637+00	638+00	639+00	640+00	641+00	642+00	643+00	644+00	645+00	646+00										

611.84	612.01	612.16	612.37	612.58	612.74	612.98	613.21	613.42	613.60	613.79	614.05
647+00	648+00	649+00	650+00	651+00	652+00						

100FT (HORIZ.)
10FT (VERT.)

GRAPHIC SCALE IN FEET

PARSONS BRINCKERHOFF

SMITH ENGINEERING CONSULTANTS, INC.
www.smitheng.com

REVISIONS	
NAME	DATE

ILLINOIS DEPARTMENT OF TRANSPORTATION
FAI ROUTE 55
US 30 (PLAINFIELD ROAD) TO LILY CACHE SLOUGH

**DRAINAGE AND UTILITY
PLAN AND PROFILE**

SCALE: VERT. 1"=5'
HORIZ. 1"=50'
DATE: 07/21/2006

DRAWN BY JPA
CHECKED BY TEH