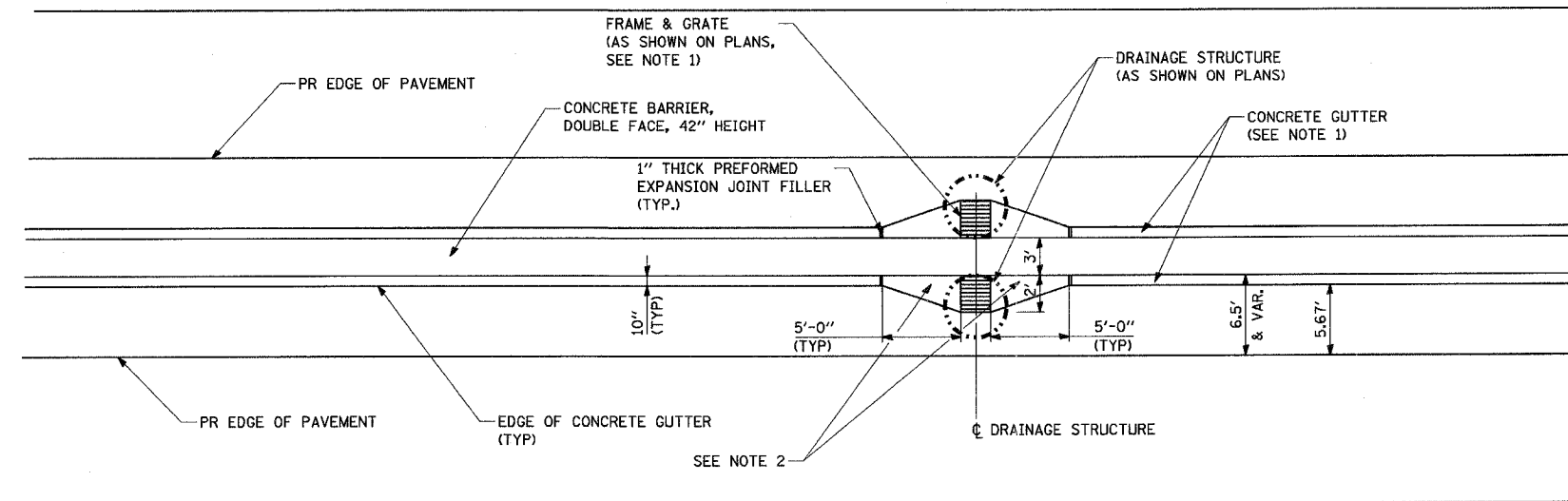


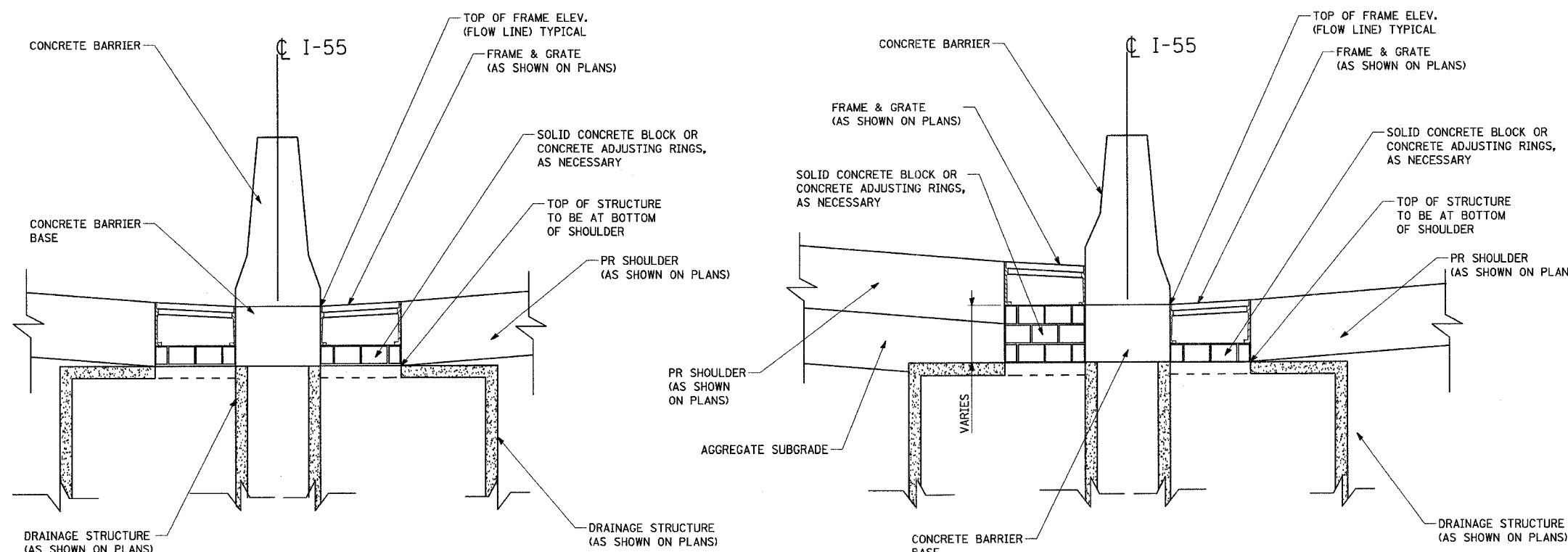
F.A.P. RTE.	SECTION	COUNTY	TOTAL SHEETS	SHEET NO.
55	2006-032 BY	WILL	505	189
STA.		TO STA.		
FED. ROAD DIST. NO.		ILLINOIS	FED. AID PROJECT	
DRUDT 2 OF 3				



NOTES

1. IN STAGE 1, THE FRAMES AND GRATES SHALL BE SET FLUSH WITH THE LEVEL OF THE BINDER COURSE AND BE SECURED BY TACK WELDING, WEDGING WASHERS OR A COMBINATION THEREOF TO THE SATISFACTION OF THE ENGINEER, IMMEDIATELY PRIOR TO PLACING THE SURFACE COURSE OR AS DIRECTED BY THE ENGINEER, THE FRAMES AND GRATES SHALL BE UNSECURED AND ADJUSTED TO THE FINAL SURFACE ELEVATION IN ACCORDANCE WITH SECTION 603 "ADJUSTING FRAMES AND GRATES OF DRAINAGE AND UTILITY STRUCTURES." THE COST OF SECURING AND UNSECURING THE FRAMES AND GRATES SHALL BE INCLUDED IN THE CONTRACT UNIT PRICE EACH FOR FRAMES AND GRATES TO BE ADJUSTED.
2. THE COST OF ADDITIONAL WIDTH OF CONCRETE GUTTER AS SHOWN AT THE DRAINAGE STRUCTURES SHALL BE INCLUDED IN THE CONTRACT UNIT PRICE PER FOOT FOR CONCRETE GUTTER.

CONCRETE GUTTER DETAIL AT DRAINAGE STRUCTURE



NOTES

1. THE COST OF SOLID CONCRETE BLOCK OR CONCRETE ADJUSTING RINGS SHALL BE INCLUDED IN THE CONTRACT UNIT PRICE OF DRAINAGE STRUCTURES OF TYPE OR SIZE SPECIFIED.
2. SEE STATE AND DISTRICT 1 STANDARDS FOR DRAINAGE STRUCTURE DETAILS.
3. FOR STRUCTURE AND PIPE INFORMATION SEE DRAINAGE SCHEDULES.

SAME P.G.L. SIDE ELEVATION

DIFFERENTIAL P.G.L. SIDE ELEVATION

CONCRETE ADJUSTING RINGS OR CONCRETE BLOCKS FOR TYPE 20 AND TYPE 21 F & G

PARSONS BRINCKERHOFF
 SMITH ENGINEERING CONSULTANTS, INC.
 www.smithengineering.com

REVISIONS	
NAME	DATE

ILLINOIS DEPARTMENT OF TRANSPORTATION
 FAI ROUTE 55
 US 30 (PLAINFIELD ROAD) TO LILY CACHE SLOUGH
DRAINAGE DETAILS
 STRUCTURE ADJUSTMENT
 SCALE: N.T.S.
 DATE: 07/21/2006
 DRAWN BY: MRK
 CHECKED BY: TL

FINAL