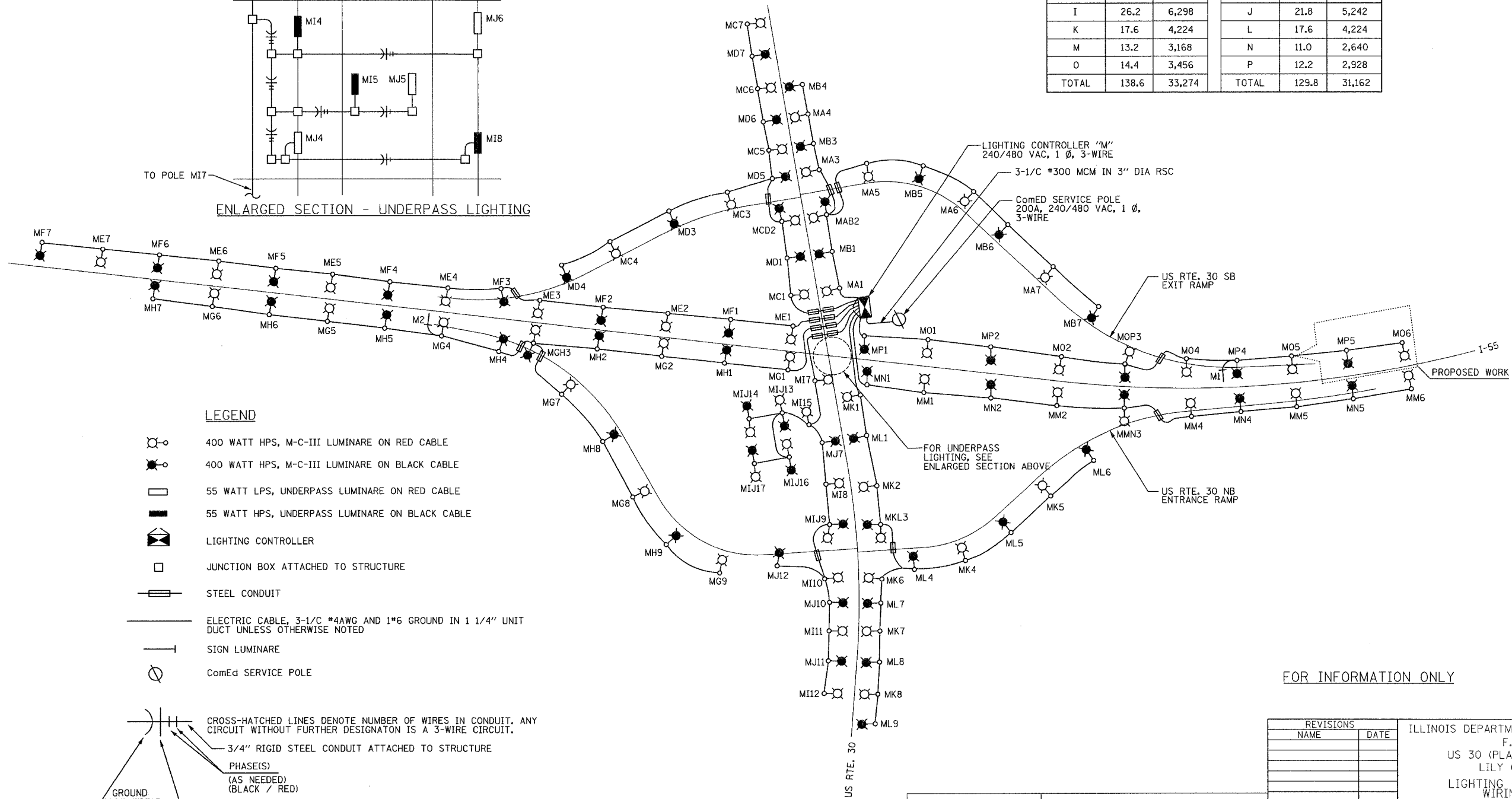
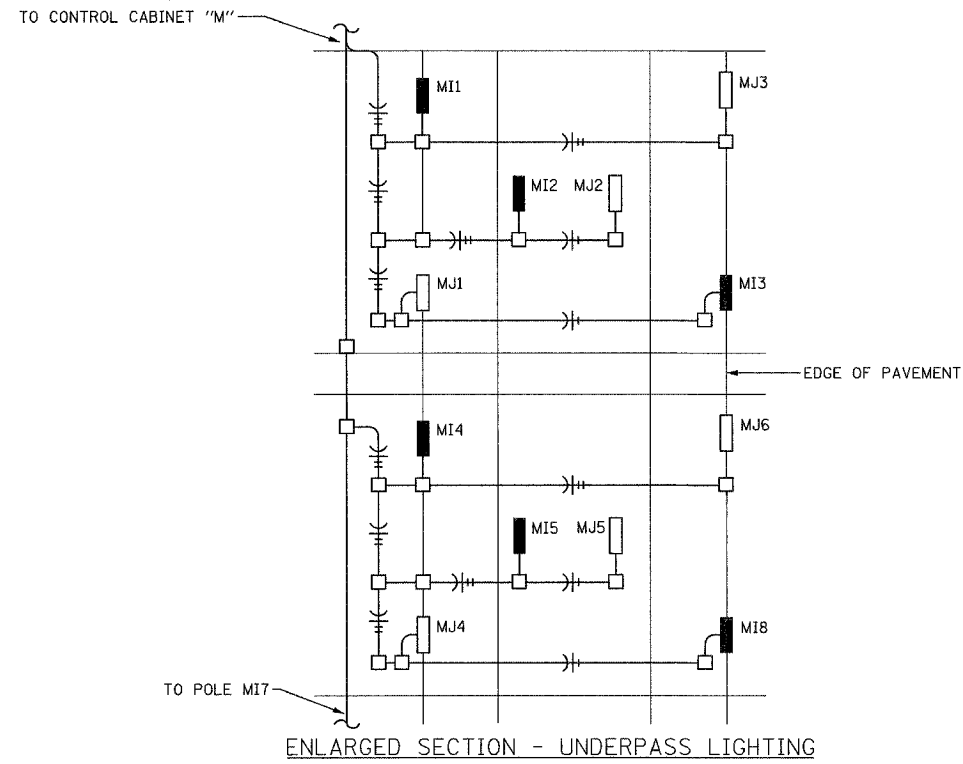
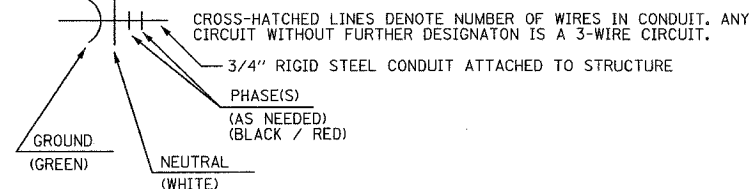


LOAD TABLE LIGHTING CONTROLLER "M"					
CIRCUIT	RED PHASE		CIRCUIT	BLACK PHASE	
	AMPS	WATTS		AMPS	WATTS
A	15.4	3,696	B	15.4	3,696
C	15.4	3,696	D	15.4	3,696
E	15.4	3,696	F	15.4	3,696
G	21.0	5,040	H	21.0	5,040
I	26.2	6,298	J	21.8	5,242
K	17.6	4,224	L	17.6	4,224
M	13.2	3,168	N	11.0	2,640
O	14.4	3,456	P	12.2	2,928
TOTAL	138.6	33,274	TOTAL	129.8	31,162



**LEGEND**

- 400 WATT HPS, M-C-III LUMINARE ON RED CABLE
- 400 WATT HPS, M-C-III LUMINARE ON BLACK CABLE
- 55 WATT LPS, UNDERPASS LUMINARE ON RED CABLE
- 55 WATT HPS, UNDERPASS LUMINARE ON BLACK CABLE
- LIGHTING CONTROLLER
- JUNCTION BOX ATTACHED TO STRUCTURE
- STEEL CONDUIT
- ELECTRIC CABLE, 3-1/8 #4AWG AND 1#6 GROUND IN 1 1/4" UNIT DUCT UNLESS OTHERWISE NOTED
- SIGN LUMINARE
- ComEd SERVICE POLE



FOR INFORMATION ONLY

L-3

**SINGH**  
SINGH & ASSOCIATES, INC.  
CONSULTING ENGINEERS  
330 W. ADAMS ST.  
CHICAGO, IL 60606  
TEL: (312) 629-0240  
FAX: (312) 629-8449

**PB PARSONS BRINCKERHOFF**  
1928

REVISIONS	
NAME	DATE

ILLINOIS DEPARTMENT OF TRANSPORTATION  
F.A.I. I-55  
US 30 (PLAINFIELD ROAD) TO  
LILY CACHE SLOUGH  
LIGHTING CONTROLLER "M"  
WIRING DIAGRAM

SCALE: DATE: 06-30-06

DRAWN BY: VG  
CHECKED BY: PV

FINAL