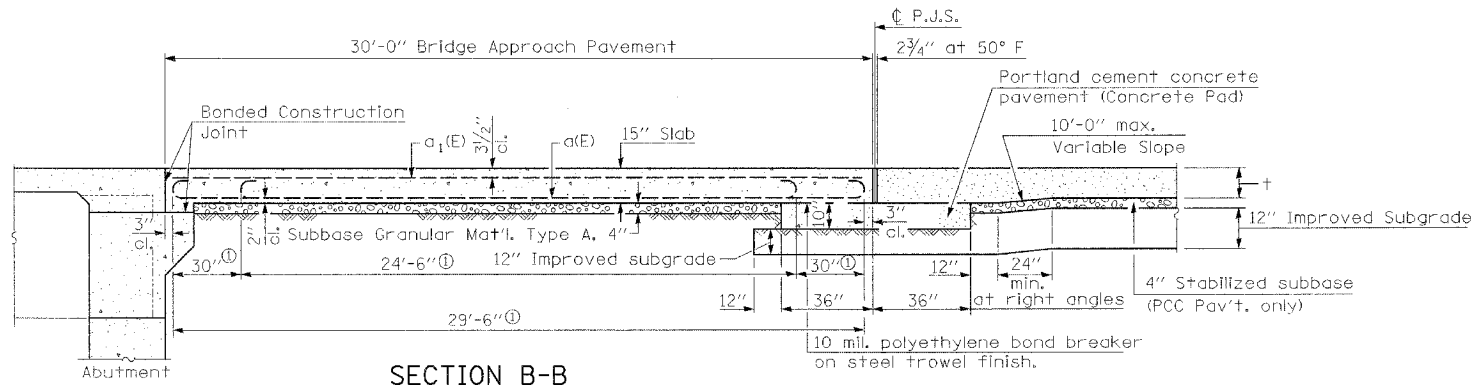
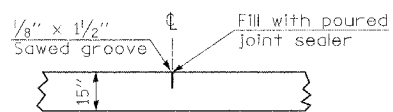


F.A.P. RTE.	SECTION	COUNTY	TOTAL SHEETS	SHEET NO.
55	2006-032 BY	WILL	\$TOT#	253
STA. _____ TO STA. _____		FED. ROAD DIST. NO. _____ ILLINOIS FED. AID PROJECT		
P-XX-XXX-XX				

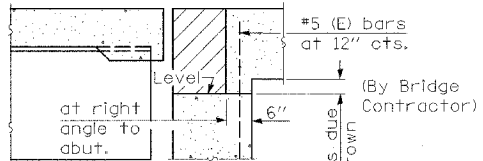


SECTION B-B

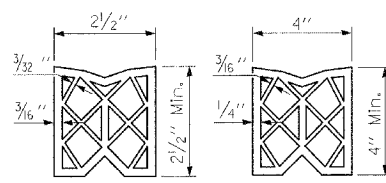
① Stagger No. 9 a bars as shown on plan - full width



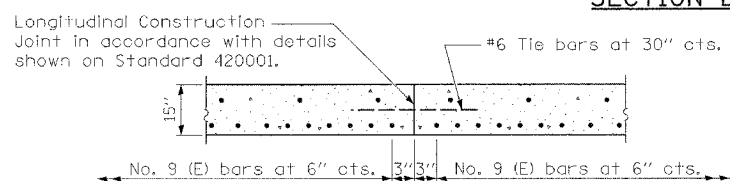
DETAIL A
(Reinforcement Not Shown)



SECTION E-E

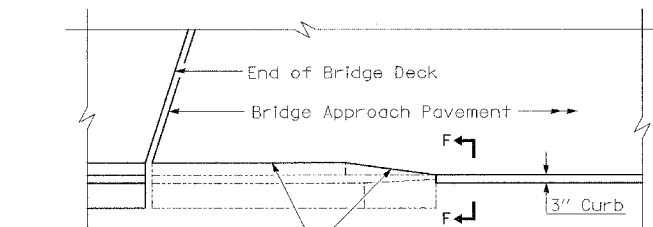


PREFORMED JOINT SEALS

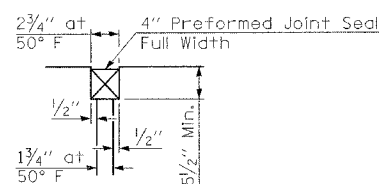


OPTION LONGITUDINAL CONSTRUCTION JOINT

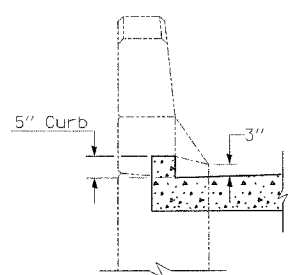
As approved by the Engineer, the Contractor may elect to reduce widths of pour by use of an Optional Longitudinal Construction Joint shown. Joints shall be located at the edge of a traffic lane.



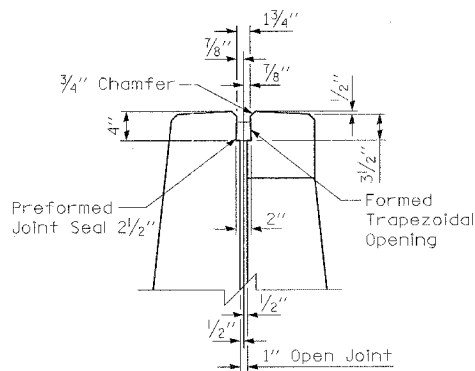
PARAPET TO CURB TRANSITION



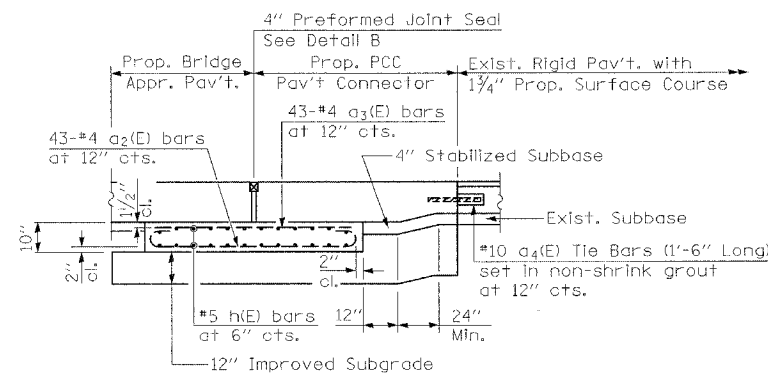
DETAIL B



SECTION F-F

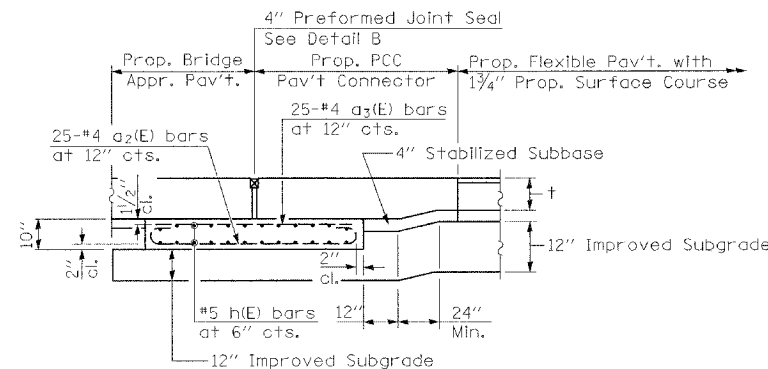


DETAIL C



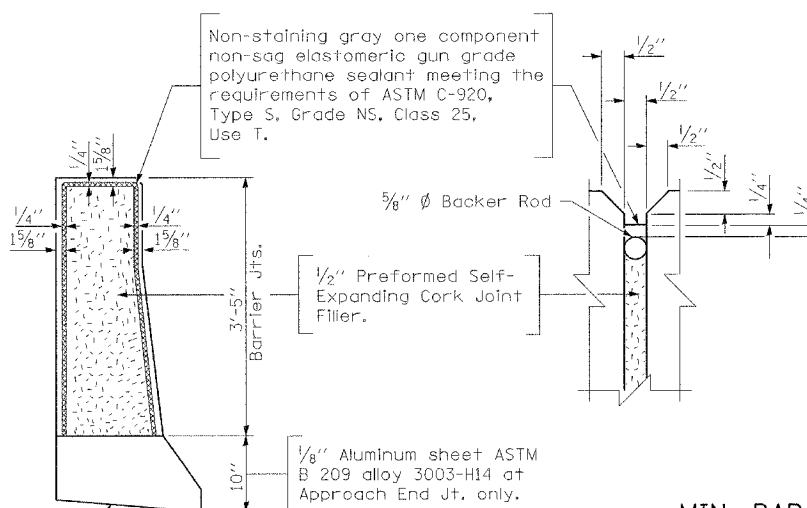
SECTION C-C - RIDID PAVEMENT

(Showing Reinforcement)

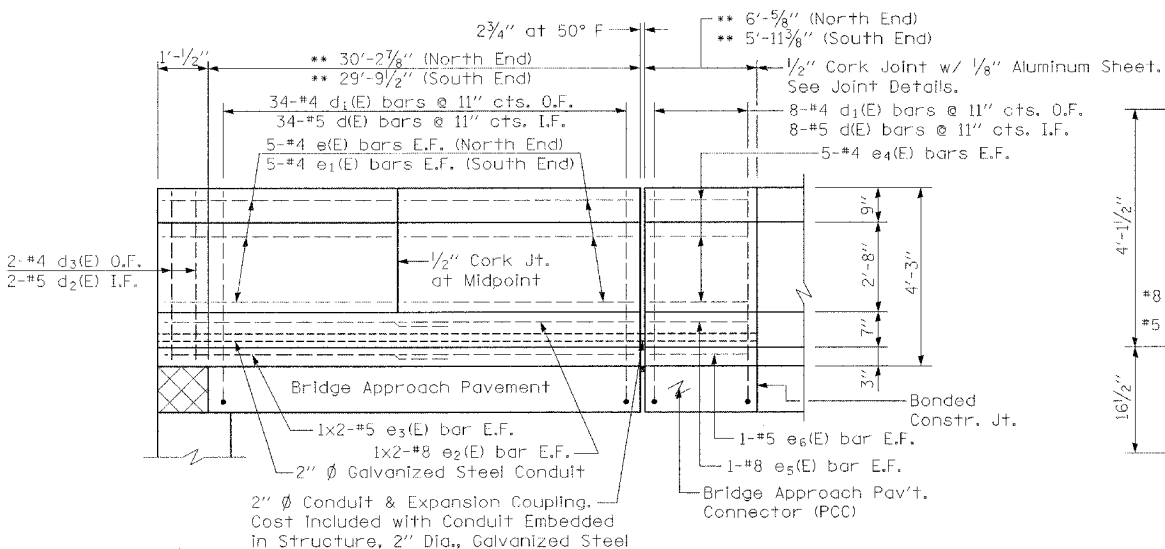


SECTION D-D - FLEXIBLE PAVEMENT

(Showing Reinforcement)

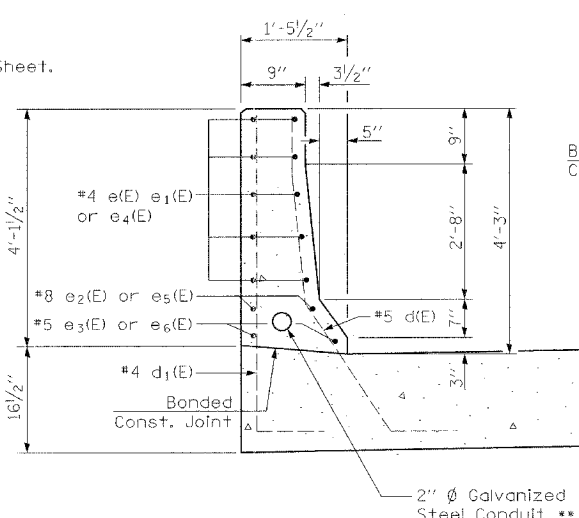


MEDIAN BARRIER JOINT DETAILS



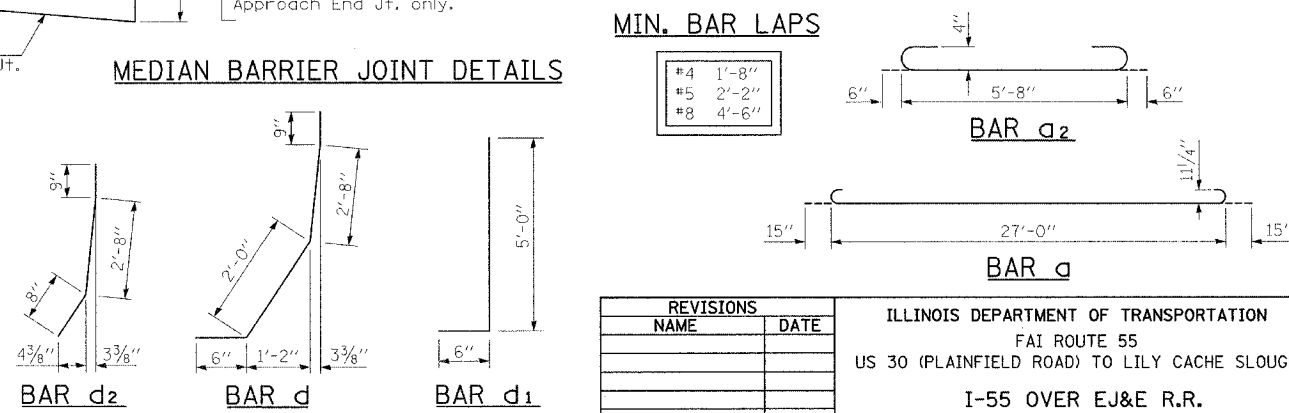
MEDIAN BARRIER ELEVATION

** Dimensions are measured along front face of barrier.



SECTION THRU MEDIAN BARRIER

** Maintain a minimum of 1" clearance from all reinforcement bars in barrier.



MIN. BAR LAPS

REVISIONS	
NAME	DATE

ILLINOIS DEPARTMENT OF TRANSPORTATION	
FAI ROUTE 55	
US 30 (PLAINFIELD ROAD) TO LILY CACHE SLOUGH	
I-55 OVER EJ&E R.R.	
NB BRIDGE APPROACH PAVEMENT DETAILS	
STANDARD 420401 (SPECIAL)	
SCALE: NONE	DRAWN BY SBC
DATE: 06-30-06	CHECKED BY JQZ

* BAR SCHEDULE NB APPROACH PAVEMENT

Bar	No.	Size	Length	Shape	
a(E)	260	#9	29'-6"	—	
a1(E)	130	#5	29'-6"	—	
a2(E)	136	#4	6'-8"	—	
a3(E)	136	#4	5'-8"	—	
a4(E)	88	#10	1'-6"	—	
b(E)	180	#5	23'-10"	—	
b1(E)	48	#4	23'-4"	—	
h(E)	156	#5	23'-11"	—	
Reinforcement Bars, Epoxy Coated				Pound	40,890

BILL OF MATERIALS

Bridge Approach Pavement (Special)	Sq. Yd.	431
Bridge Approach Pavement Connector (PCC) Special	Sq. Yd.	84.3

* For Information Only.

BAR SCHEDULE MEDIAN BARRIERS

Bar	No.	Size	Length	Shape
e1(E)	20	#4	15'-4"	—
e2(E)	20	#4	15'-1"	—
e3(E)	8	#8	17'-11"	—
e4(E)	8	#5	16'-9"	—
e5(E)	20	#4	5'-9"	—
e6(E)	4	#8	5'-9"	—
e6(E)	4	#5	5'-9"	—
d(E)	84	#5	5'-11"	—
d1(E)	84	#4	5'-6"	—
d2(E)	4	#5	4'-1"	—
d3(E)	4	#4	3'-11"	—

BILL OF MATERIALS

Concrete Structures	Cu. Yd.	12.7
Reinforcement Bars, Epoxy Coated	Pound	1,950
Protective Coat	Sq. Yd.	42
Preformed Joint Seal, 2 1/2"	Foot	74.5
Conduit Embedded In Structure, 2" Dia., Galvanized Steel	Foot	75

* Total quantity shown is for both NB & SB Bridge Approach Pavements.

