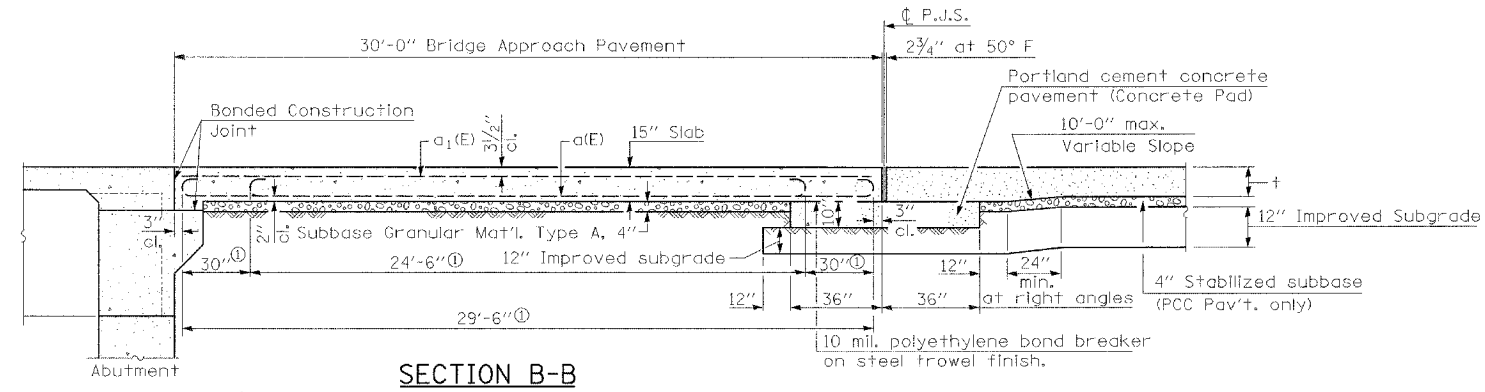
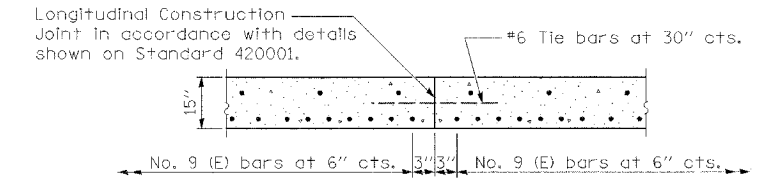


F.A.P. RTE.	SECTION	COUNTY	TOTAL SHEETS	SHEET NO.
55	2006-032 BY	WILL	#TOT#	257
STA. _____ TO STA. _____		FED. ROAD DIST. NO. ILLINOIS FED. AID PROJECT		
P-XX-XXX-XX				



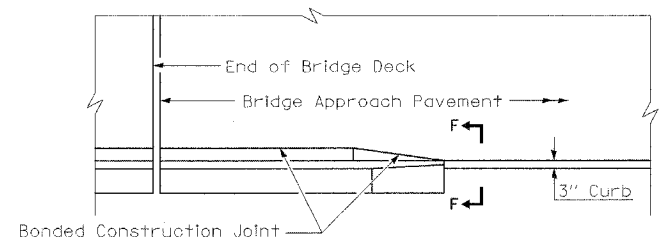
SECTION B-B

Stagger No. 9 a bars as shown on plan - full width

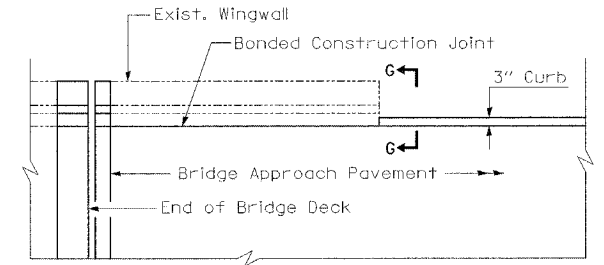


OPTION LONGITUDINAL CONSTRUCTION JOINT

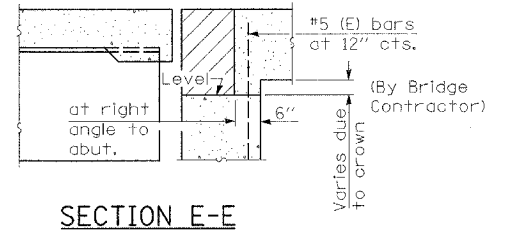
As approved by the Engineer, the Contractor may elect to reduce widths of pour by use of an Optional Longitudinal Construction Joint shown. Joints shall be located at the edge of a traffic lane.



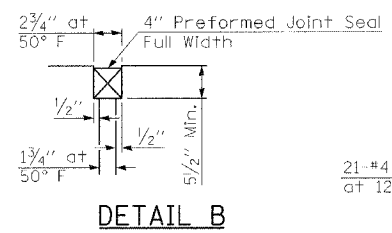
NB PARAPET TO CURB TRANSITION



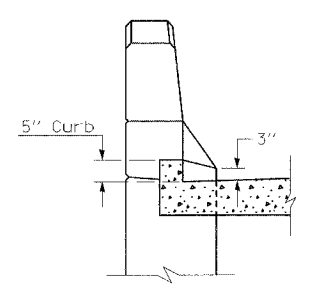
SB PARAPET TO CURB TRANSITION



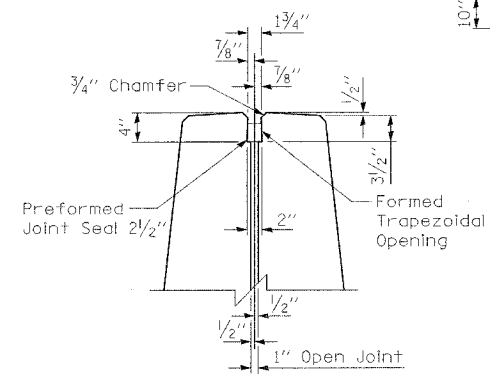
SECTION E-E



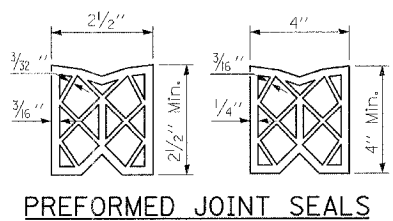
DETAIL B



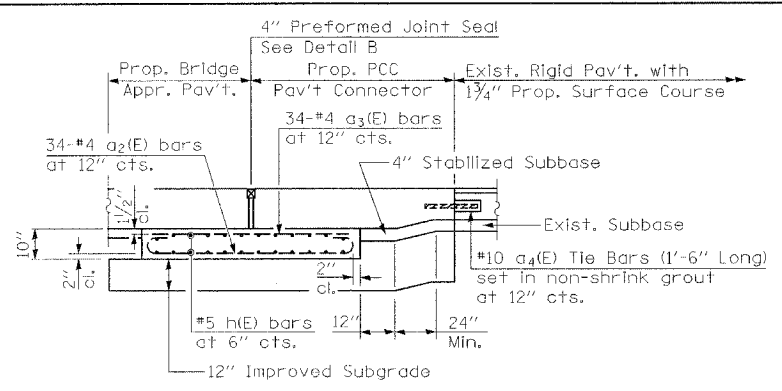
SECTION F-F



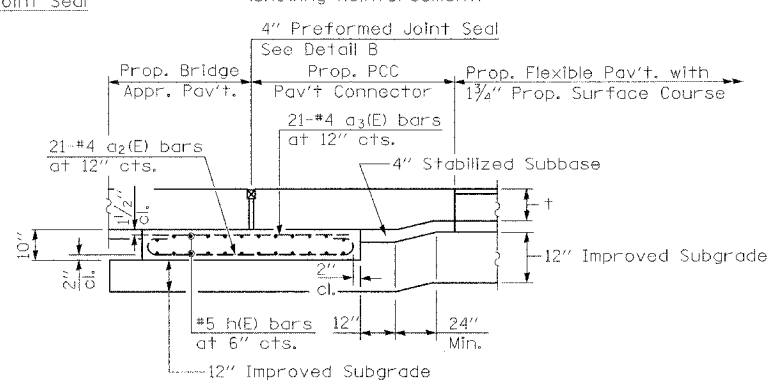
DETAIL C



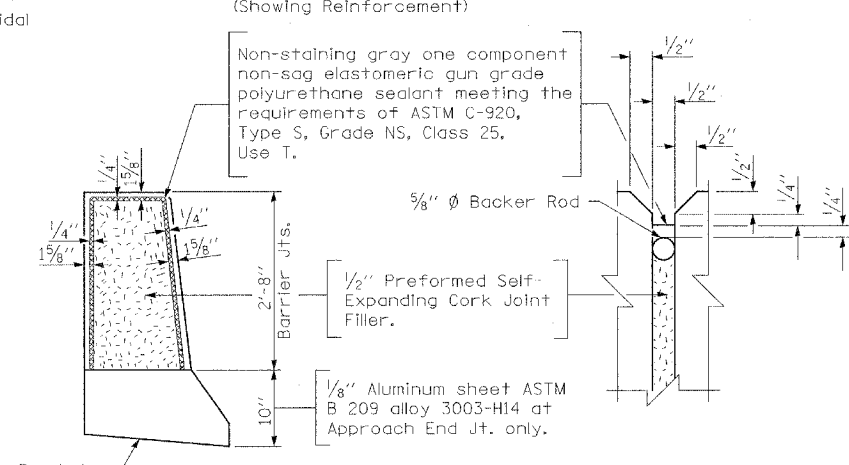
PREFORMED JOINT SEALS



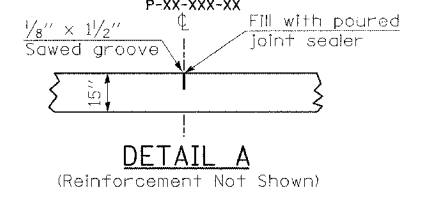
SECTION C-C - RIDID PAVEMENT



SECTION D-D - FLEXIBLE PAVEMENT



MEDIAN BARRIER JOINT DETAILS



DETAIL A
(Reinforcement Not Shown)

*** BAR SCHEDULE APPROACH PAVEMENT**

Bar	No.	Size	Length	Shape
a(E)	436	#9	29'-6"	U
a ₁ (E)	220	#5	29'-6"	U
a ₂ (E)	220	#4	6'-8"	U
a ₃ (E)	220	#4	5'-8"	U
a ₄ (E)	136	#10	1'-6"	U
b(E)	248	#5	28'-1"	U
b ₁ (E)	72	#4	27'-10"	U
h(E)	208	#5	28'-2"	U
Reinforcement Bars, Epoxy Coated		Pound	67,910	

BILL OF MATERIALS

Bridge Approach Pavement (Special)	Sq. Yd.	718
Bridge Approach Pavement Connector (PCC) Special	Sq. Yd.	143

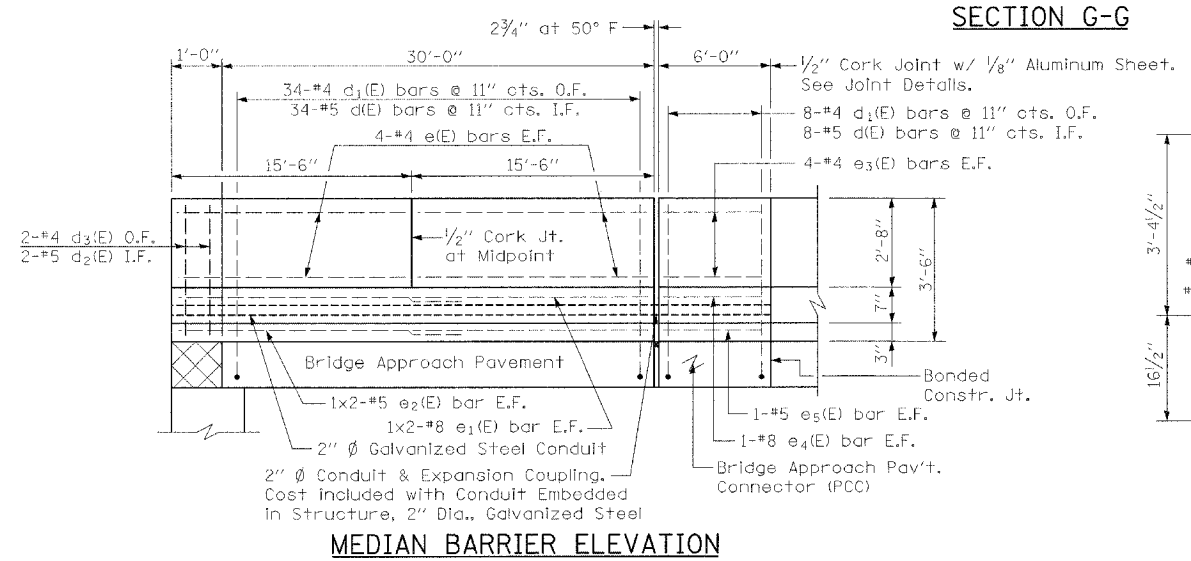
* For Information Only.

BAR SCHEDULE MEDIAN BARRIERS

Bar	No.	Size	Length	Shape
e(E)	64	#4	15'-2"	U
e ₁ (E)	16	#8	17'-9"	U
e ₂ (E)	16	#5	16'-7"	U
e ₃ (E)	32	#4	5'-8"	U
e ₄ (E)	8	#8	5'-8"	U
e ₅ (E)	8	#5	5'-8"	U
d(E)	168	#5	5'-2"	U
d ₁ (E)	168	#4	4'-9"	U
d ₂ (E)	8	#5	3'-4"	U
d ₃ (E)	8	#4	3'-1"	U

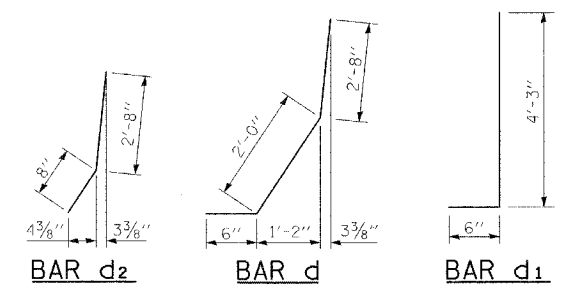
BILL OF MATERIALS

Concrete Structures	Cu. Yd.	19.8
Reinforcement Bars, Epoxy Coated	Pound	3,460
Protective Coat	Sq. Yd.	70
Preformed Joint Seal, 2 1/2"	Foot	74
Conduit Embedded in Structure, 2" Dia., Galvanized Steel	Foot	148



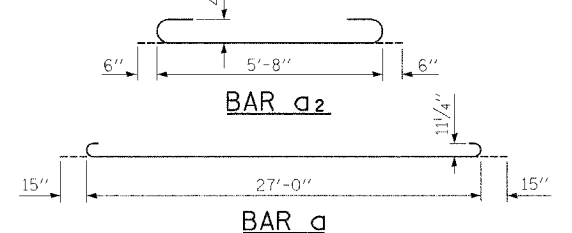
SECTION THRU MEDIAN BARRIER

** Maintain a minimum of 1" clearance from all reinforcement bars in barrier.



MIN. BAR LAPS

#4	1'-8"
#5	2'-2"
#8	4'-6"



BAR a

BAR a₂

REVISIONS	
NAME	DATE

ILLINOIS DEPARTMENT OF TRANSPORTATION
 I-55 OVER MS (ABANDONED) R.R.
 BRIDGE APPROACH PAVEMENT DETAILS
 STANDARD 420401 (SPECIAL)

SCALE: NONE
 DATE: 06-30-06
 DRAWN BY: SBC
 CHECKED BY: JOZ

STATES \$FILES

