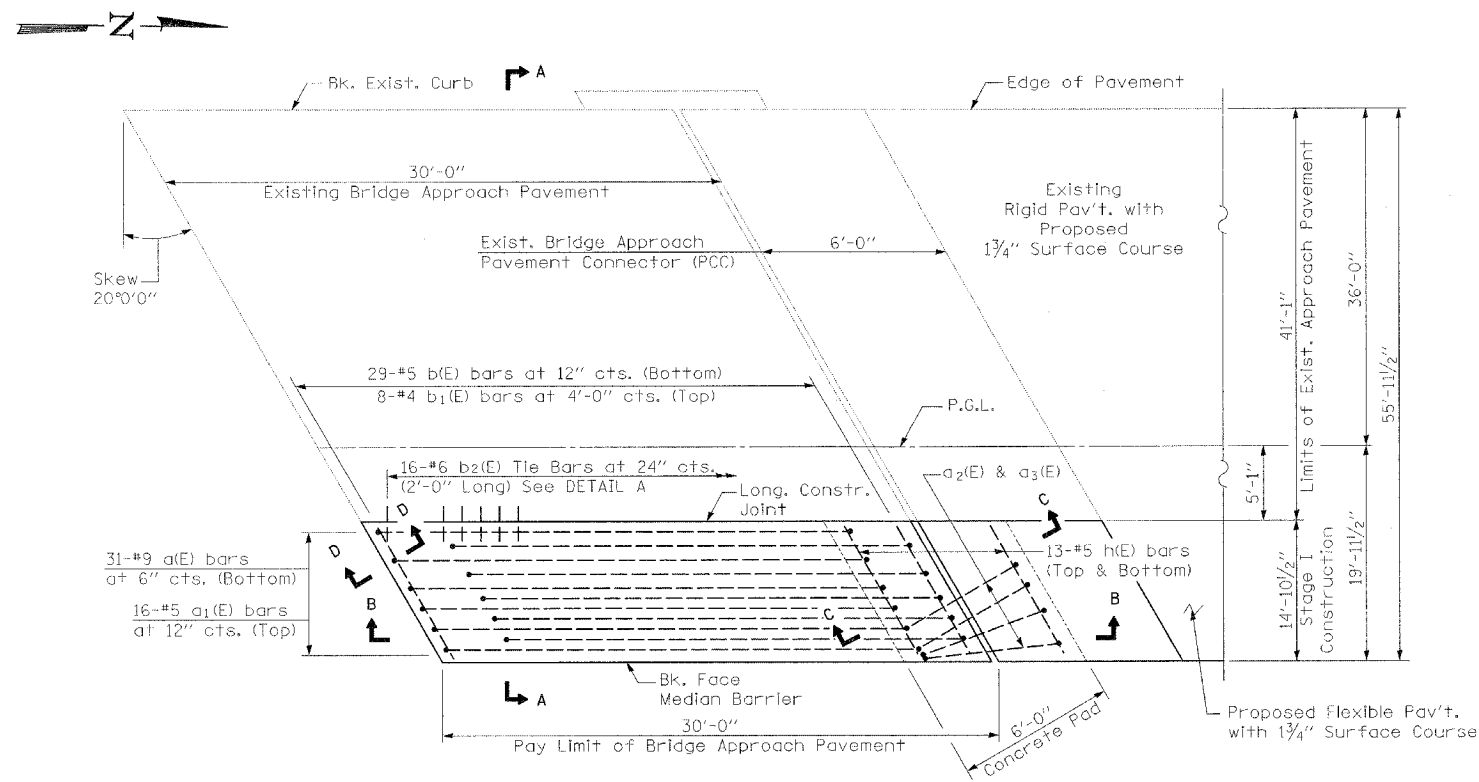
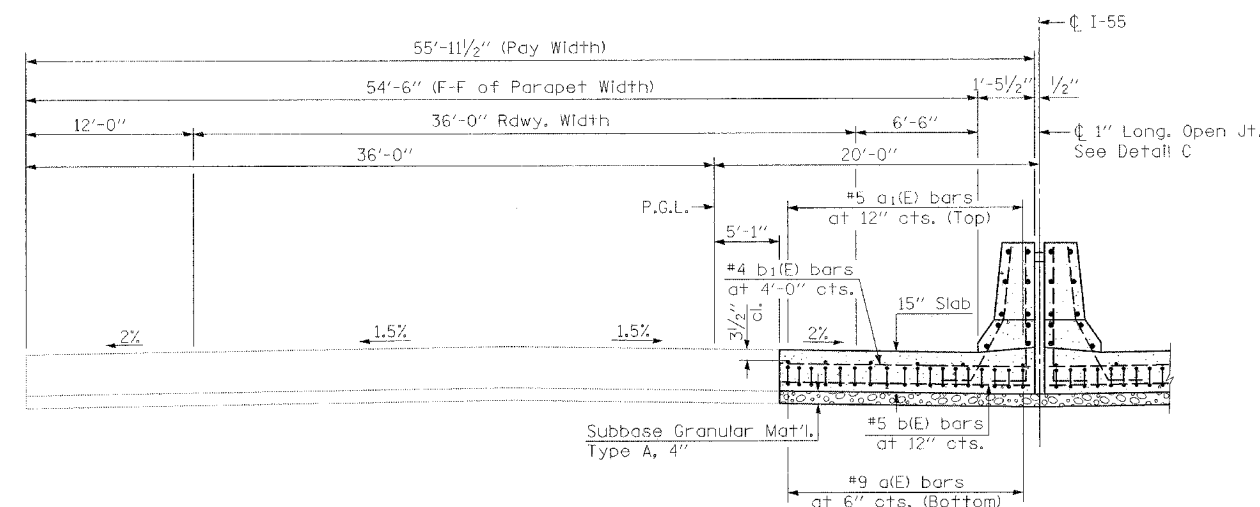


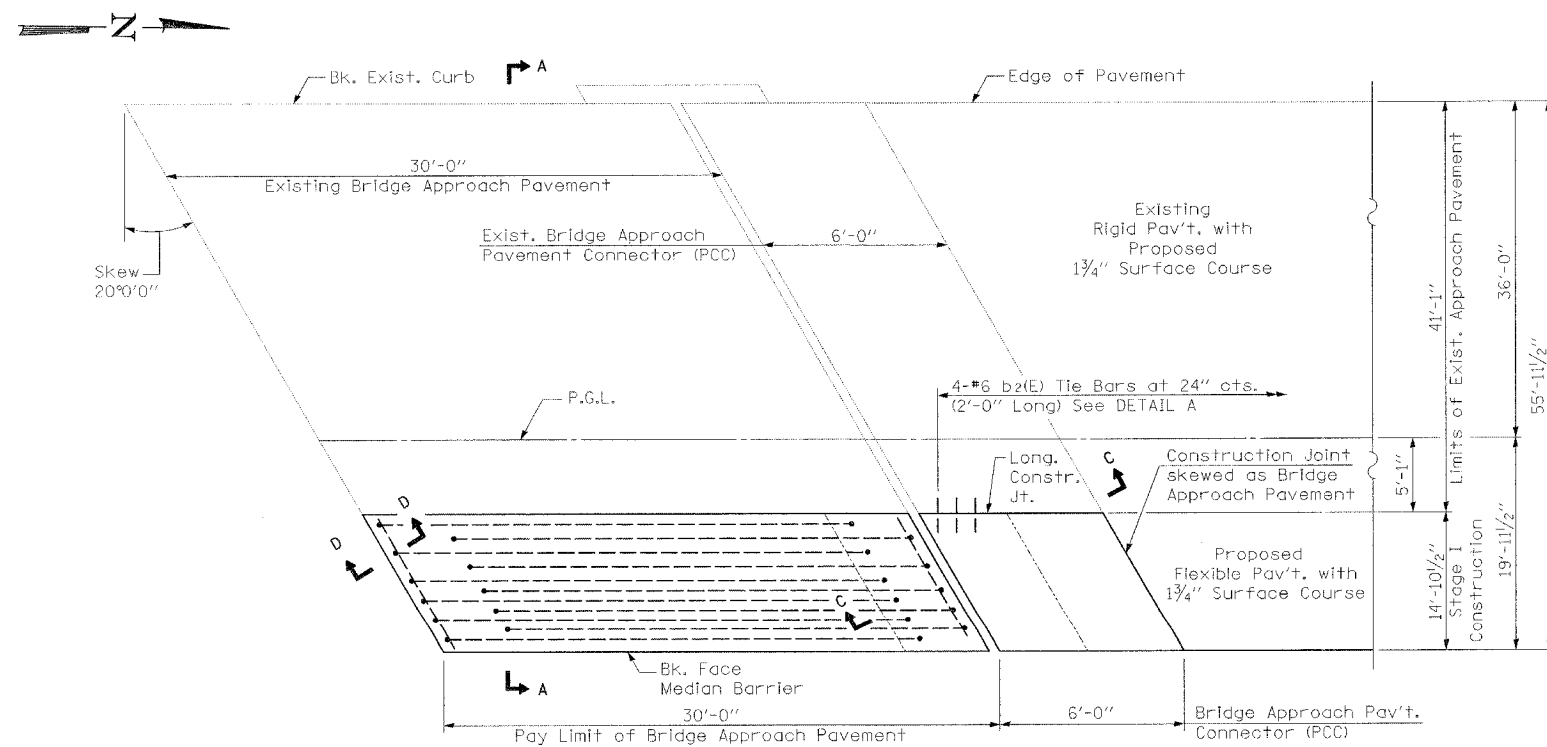
F.A.P. RTE.	SECTION	COUNTY	TOTAL SHEETS	SHEET NO.
55	2006-032 BY	WILL	#TOT#	258
STA. _____		TO STA. _____		
FED. ROAD DIST. NO. _____		ILLINOIS FED. AID PROJECT		
P-XX-XXX-XX				



**I-55 OVER MINK CREEK
BRIDGE APPROACH PAVEMENT PLAN**
(See Section A-A for Dimensions not shown)



SECTION A-A - BRIDGE APPROACH PAVEMENT



**I-55 OVER MINK CREEK
BRIDGE APPROACH PAVEMENT CONNECTOR (PCC)**
(See Section A-A for Dimensions not shown)

GENERAL NOTES

1. THICKNESS-"t"=Thickness of Pavement.
2. For Profile, see Roadway Plans.
3. Reinforcement Bars designated "(E)" shall be Epoxy Coated.
4. Approach Pavement Concrete Median Barriers shall be constructed and paid for in accordance with Sections 503 and 508 of the IDOT Standard Specifications.
5. Protective Coat shall be applied to the Top and Traffic Faces of the Median Barriers.

DESIGN STRESSES

fy = 60,000 P.S.I.
f'c = 3,500 P.S.I.
n = 8.5

SDATES STIMES SFILES

REVISIONS		ILLINOIS DEPARTMENT OF TRANSPORTATION FAI ROUTE 55 US 30 (PLAINFIELD ROAD) TO LILY CACHE SLOUGH I-55 OVER MINK CREEK BRIDGE APPROACH PAVEMENT PLAN & SECTION STANDARD 420401 (SPECIAL)
NAME	DATE	
		SCALE: NONE
		DATE: 06-30-06
		DRAWN BY: SBC
		CHECKED BY: JQZ



FINAL