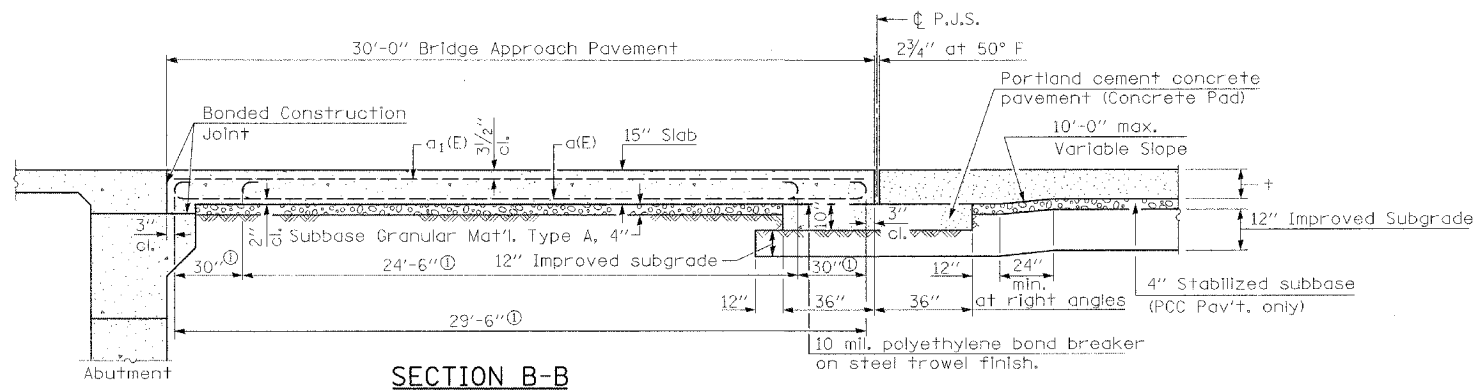
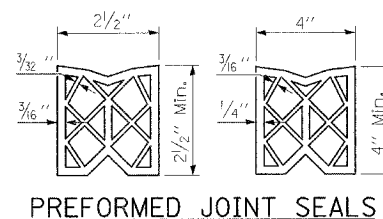


F.A.P. RTE.	SECTION	COUNTY	TOTAL SHEETS	SHEET NO.
55	2006-032 BY	WILL	#TOT#	259
STA. _____		TO STA. _____		
FED. ROAD DIST. NO. _____		ILLINOIS FED. AID PROJECT		
P-XX-XXX-XX				

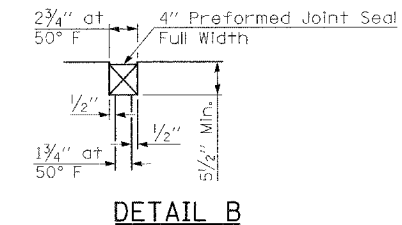


SECTION B-B

ⓐ Stagger No. 9 a bars as shown on plan - full width



PREFORMED JOINT SEALS



DETAIL B

*** BAR SCHEDULE APPROACH PAVEMENT**

Bar	No.	Size	Length	Shape
a(E)	124	#9	29'-6"	—
a ₁ (E)	64	#5	29'-6"	—
a ₂ (E)	68	#4	6'-8"	—
a ₃ (E)	68	#4	5'-8"	—
b(E)	116	#5	15'-6"	—
b ₁ (E)	32	#4	15'-6"	—
b ₂ (E)	80	#6	2'-0"	—
h(E)	104	#5	15'-6"	—
Reinforcement Bars, Epoxy Coated		Pound	19,100	

BILL OF MATERIALS

Bridge Approach Pavement (Special)	Sq. Yd.	199
Bridge Approach Pavement Connector (PCC) Special	Sq. Yd.	40

* For Information Only.

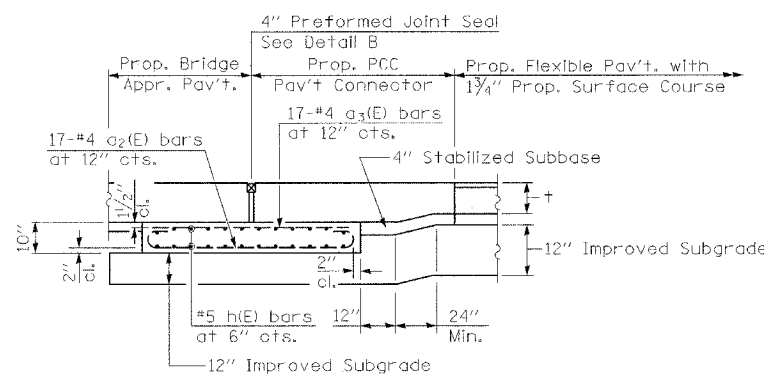
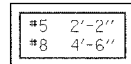
BAR SCHEDULE MEDIAN BARRIERS

Bar	No.	Size	Length	Shape
e(E)	64	#4	14'-8"	—
e ₁ (E)	16	#8	17'-3"	—
e ₂ (E)	16	#5	16'-1"	—
e ₃ (E)	32	#4	5'-8"	—
e ₄ (E)	8	#8	5'-8"	—
e ₅ (E)	8	#5	5'-8"	—
d(E)	168	#5	5'-2"	—
d ₁ (E)	168	#4	4'-9"	—

BILL OF MATERIALS

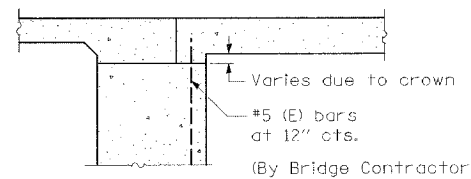
Concrete Structures	Cu. Yd.	19.2
Reinforcement Bars, Epoxy Coated	Pound	3,370
Protective Coat	Sq. Yd.	68
Preformed Joint Seal, 2 1/2"	Foot	72
Conduit Embedded In Structure, 2" Dia., Galvanized Steel	Foot	144

MIN. BAR LAPS

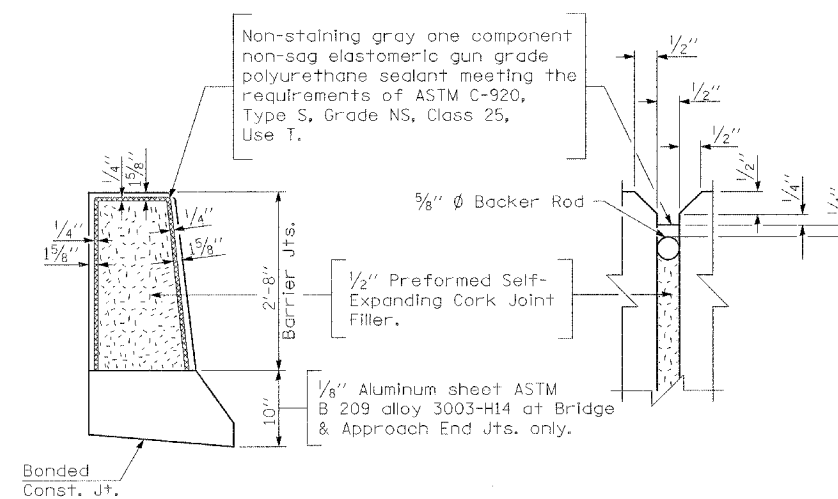


SECTION C-C - FLEXIBLE PAVEMENT

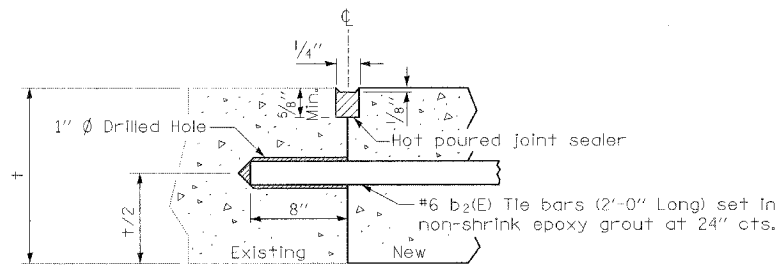
(Showing Reinforcement)



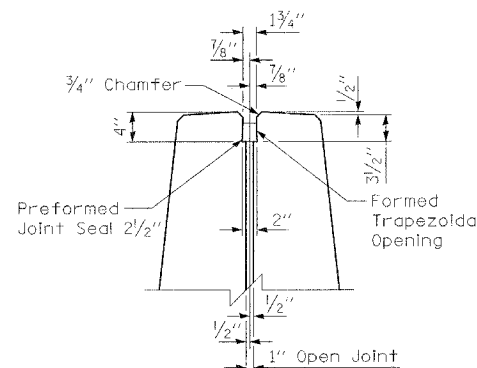
SECTION D-D



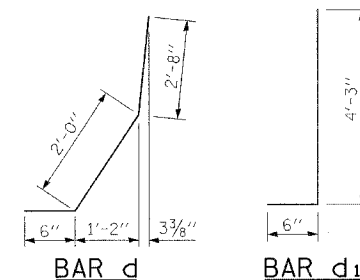
MEDIAN BARRIER JOINT DETAILS



DETAIL A LONGITUDINAL JOINT

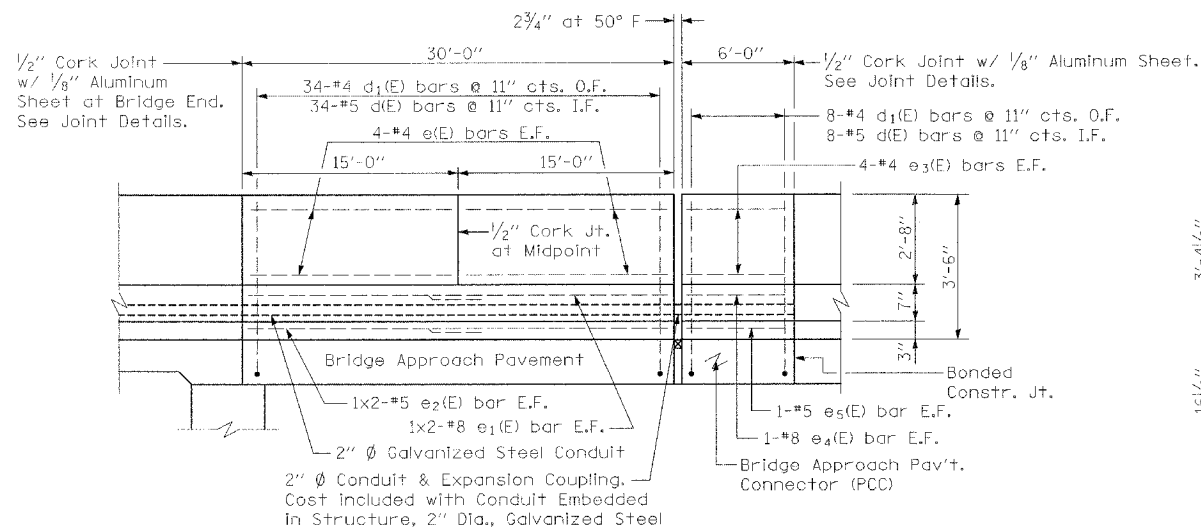


DETAIL C

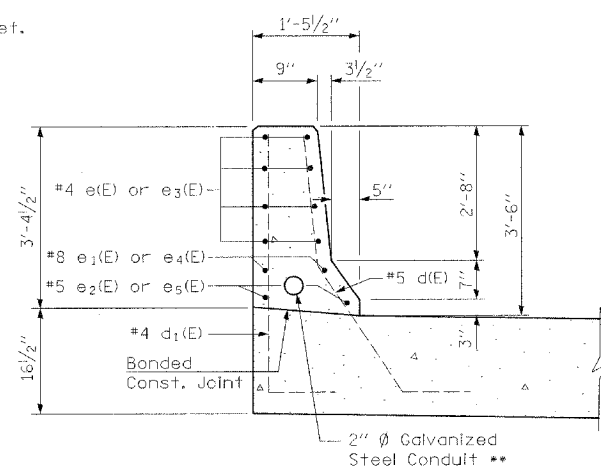


BAR d

BAR d1

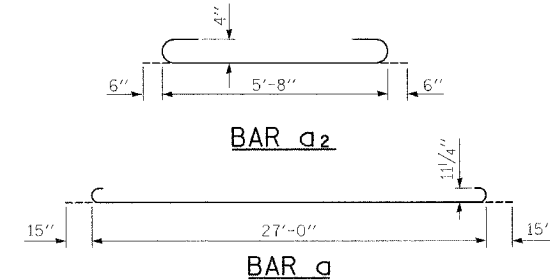


MEDIAN BARRIER ELEVATION



SECTION THRU MEDIAN BARRIER

** Maintain a minimum of 1" clearance from all reinforcement bars in barrier.



BAR a₂

BAR a

REVISIONS	
NAME	DATE

ILLINOIS DEPARTMENT OF TRANSPORTATION
 FAI ROUTE 55
 US 30 (PLAINFIELD ROAD) TO LILY CACHE SLOUGH
 I-55 OVER MINK CREEK
 BRIDGE APPROACH PAVEMENT DETAILS
 STANDARD 420401 (SPECIAL)

SCALE: NONE DRAWN BY SBC
 DATE: 06-30-06 CHECKED BY JOZ

