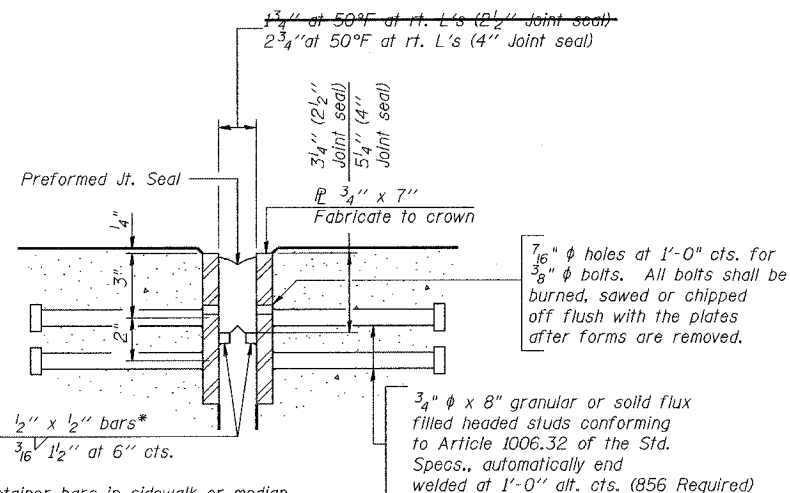


F.A.I. RTE.	SECTION	COUNTY	TOTAL SHEETS	SHEET NO.
55	2006-032 BY	WILL	565	275
STA.		TO STA.		
FED. ROAD DIST. NO.		ILLINOIS FED. AID PROJECT		



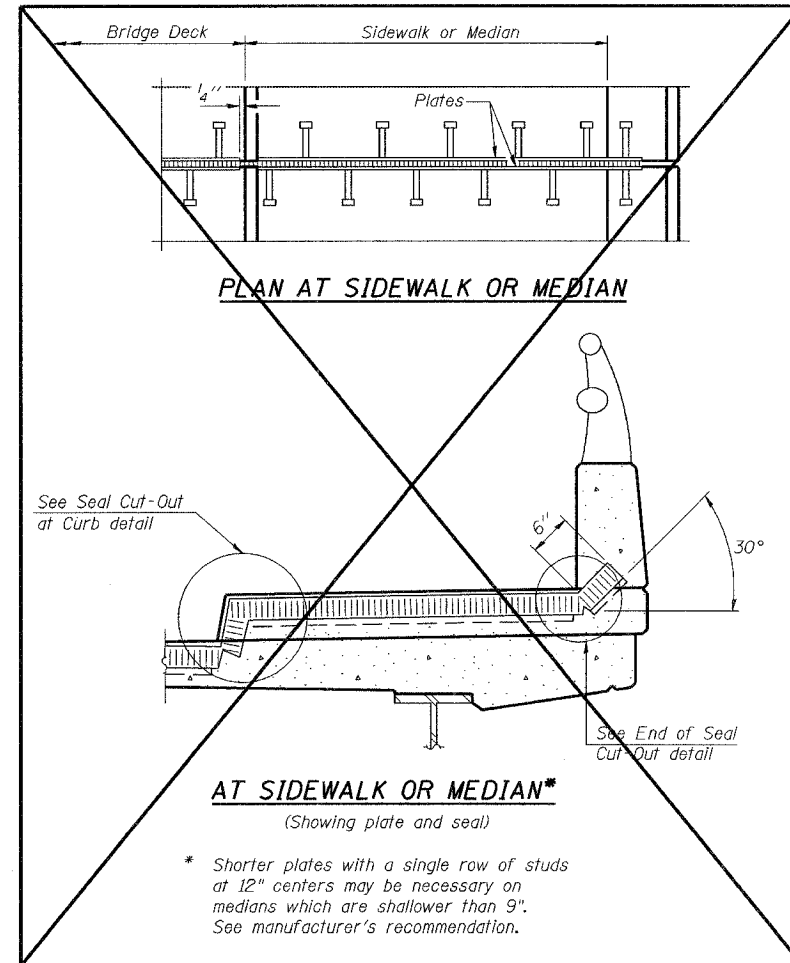
*Cut retainer bars in sidewalk or median 6" short of the sidewalk or median face.

SECTION THRU EXPANSION JOINT
(2 1/2" and 4" joint seals)

Design Movement	Required Preformed Joint Seal Size	Required Strip Seal Rated movement
1"	2 1/2"	1"
1 5/8"	4"	2"

GENERAL NOTES

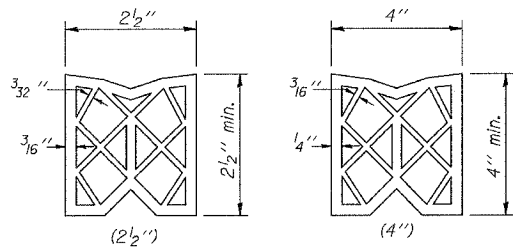
Furnish steel plates in segments of 20 feet maximum length. Maximum space between installed segments shall be 3/16". Seal space with silicone sealant suitable for structural steel.



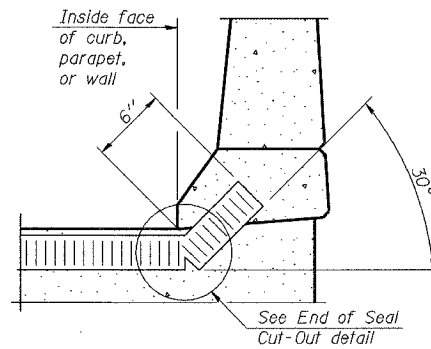
PLAN AT SIDEWALK OR MEDIAN

AT SIDEWALK OR MEDIAN*
(Showing plate and seal)

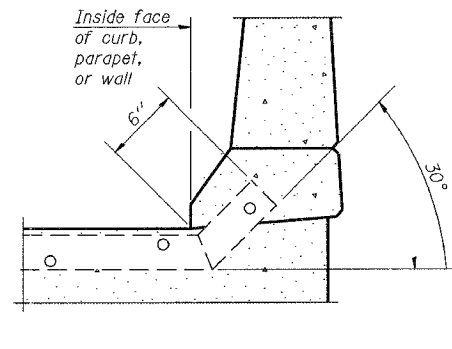
* Shorter plates with a single row of studs at 12" centers may be necessary on medians which are shallower than 9". See manufacturer's recommendation.



PREFORMED JOINT SEAL

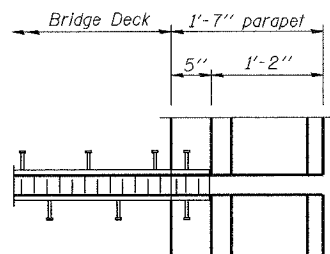


AT CURB, PARAPET, OR WALL
(Showing seal)

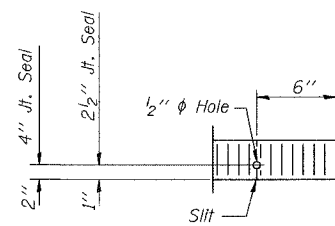


AT CURB, PARAPET, OR WALL
(Showing plate)

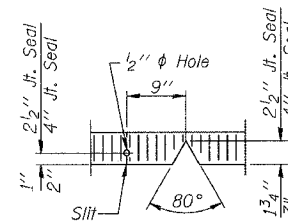
TYPICAL END TREATMENTS



PLAN AT PARAPET



END OF SEAL CUT-OUT



SEAL CUT-OUT AT CURB

BILL OF MATERIAL

Item	Unit	Total
Bridge Joint System (Expansion), 1-5/8"	Foot	233.0

(Sheet 1 of 2)

BRIDGE JOINT SYSTEM - EXPANSION (PREFORMED JOINT SEAL)

ILLINOIS DEPARTMENT OF TRANSPORTATION
FAI ROUTE 55
US 30 (PLAINFIELD ROAD) TO LILY CACHE SLOUGH
SB & NB I-55 OVER US RTE. 30, S.N. 099-0016 & 099-0017
STA. 587+80.82, SECTION 2006-032 BY
WILL COUNTY

EXPANSION JOINT DETAILS - I

SHT. SC-16 OF 38

REVISIONS	
NAME	DATE

SCALE: DRAWN BY PA
DATE 07/05/06 CHECKED BY MJK

MORCOM, N.V., INC.
CONSULTING ENGINEERS
CHICAGO, ILLINOIS

TENG
TENG & ASSOCIATES, INC.
ENGINEERS/ARCHITECTS/PLANNERS
CHICAGO, ILLINOIS

PLOT DATE = #DATE#
 FILE NAME = #FILE#
 PLOT SCALE = #SCALE#
 USER NAME = #USER#
 S:\DOCUMENT\VERSION\STRUCT\CORNE\10100808.SHT
 8-28-2006 15:06:02 GARCIAZ