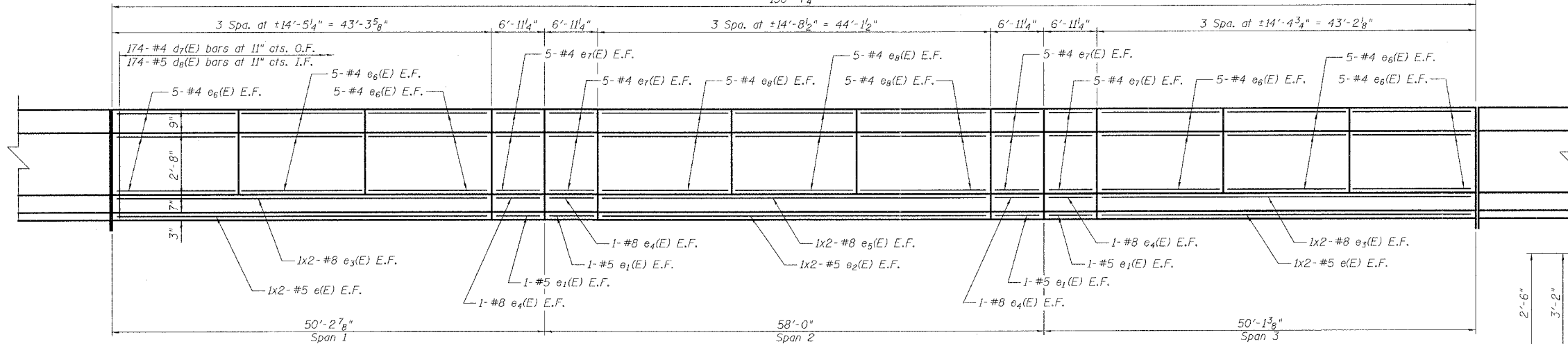


STATE OF ILLINOIS
DEPARTMENT OF TRANSPORTATION

ROUTE NO.	SECTION	COUNTY	SHEETS	SHEET	SHEET NO. 12
FAI-55	**	WILL	505	309	44 SHEETS
FED. ROAD DIST. NO. 7	BUILDING	FED. AID PROJECT			

** SECTION 2006-032 BY
CONTRACT NO. 60B86

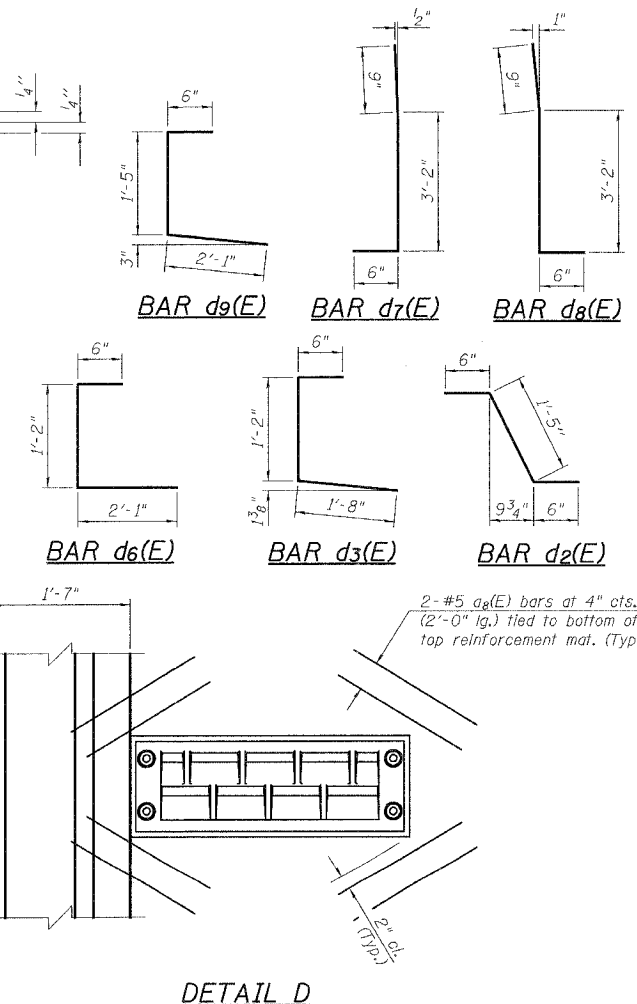
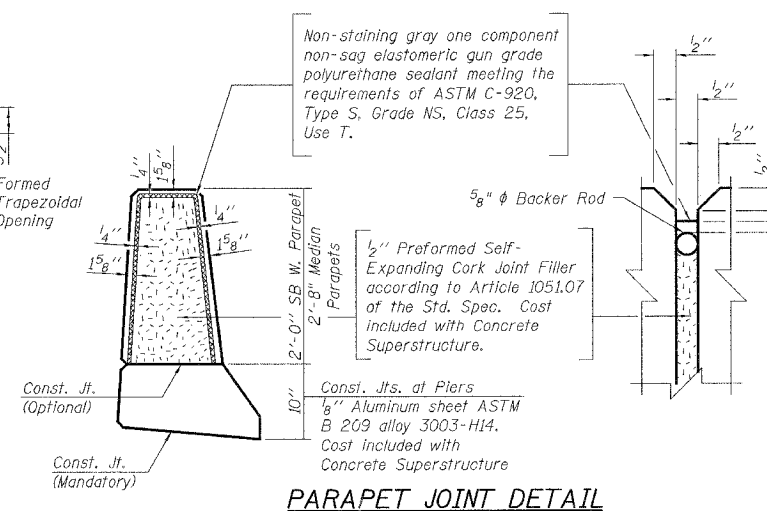
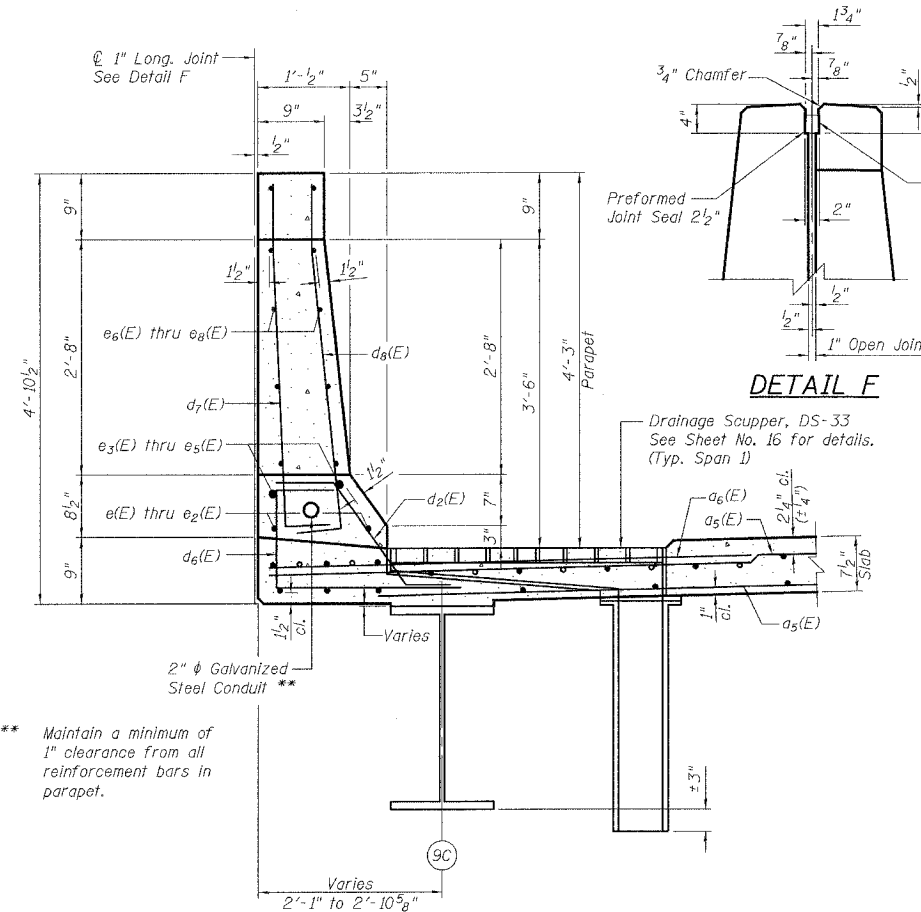


**BILL OF MATERIAL
NB SUPERSTRUCTURE**

Bar	No.	Size	Length	Shape
a5(E)	463	#5	21'-3"	—
a6(E)	137	#6	5'-4"	—
a8(E)	8	#5	2'-0"	—
b(E)	144	#5	28'-3"	—
b2(E)	112	#5	24'-6"	—
b3(E)	44	#6	18'-6"	—
d(E)	6	#4	3'-0"	—
d1(E)	6	#5	3'-0"	—
d2(E)	180	#5	2'-5"	—
d3(E)	174	#4	3'-9"	—
d4(E)	174	#4	4'-5"	—
d5(E)	174	#5	4'-5"	—
d6(E)	6	#4	4'-0"	—
e(E)	8	#5	22'-9"	—
e1(E)	8	#5	6'-7"	—
e2(E)	4	#5	23'-2"	—
e3(E)	8	#8	23'-11"	—
e4(E)	8	#8	6'-7"	—
e5(E)	4	#8	24'-4"	—
e6(E)	60	#4	14'-1"	—
e7(E)	40	#4	6'-7"	—
e8(E)	30	#4	14'-5"	—
Reinforcement Bars, Epoxy Coated		Pound	24,240	
Concrete Superstructure		Cu. Yds.	129.3	
Preformed Joint Seal, 2 1/2"		Foot	158.5	
Protective Coat *		Sq. Yd.	1,268	
Bridge Deck Grooving		Sq. Yd.	361	
Floor Drains		Each	2	
Conduit Embedded in Structure, 2" Dia., Galvanized Steel		Foot	159	
Protective Shield		Sq. Yd.	128.9	

INSIDE ELEVATION OF NB MEDIAN PARAPET

**BARS d(E), d1(E),
d4(E), & d5(E)**



- * Includes existing construction.
- Notes:
1. Reinforcement bars designated (E) shall be epoxy coated.
 2. Bars indicated thus 1 x 2-#5 etc. indicates 1 line of bars with 2 lengths per line.
 3. Cut longitudinal reinforcement to clear Drainage Scuppers & Floor Drains.
 4. For all Floor Drain Details at NB Median Parapet, See Sheet No. 11.
 5. Work this sheet with Sheet Nos. 9, 10, & 11.

MIN. BAR LAPS

#4	1'-8"
#5	2'-2"
#8	4'-6"

**SUPERSTRUCTURE DETAILS II
I-55 OVER EJ&E R.R.
FAI ROUTE 55-SEC. 2006-032 BY
WILL COUNTY
STA. 609+29.37
STRUCTURE NO. 099-0018 (NB)
STRUCTURE NO. 099-0019 (SB)**



DESIGNED	S.CHELBIAN
CHECKED	J.GRAINAWI
DRAWN	S.CHELBIAN
CHECKED	J.GRAINAWI

Date: 6/30/2006

8/30/2005 4:51:08 PM G:\16817A\Struct\Case\Pre-Final\I&E RRV\Final Bridge Contract\092206-00B86-000-012.dgn