

STATE OF ILLINOIS  
DEPARTMENT OF TRANSPORTATION

ROUTE NO.	SECTION	COUNTY	TOTAL SHEETS	SHEET NO.	SHEET NO. 24
FAI-55	**	WILL	505	321	44 SHEETS
FED. ROAD DIST. NO. 7	ILLINOIS	FED. AID PROJECT			

\*\* SECTION 2006-032 BY  
CONTRACT NO. 60B86

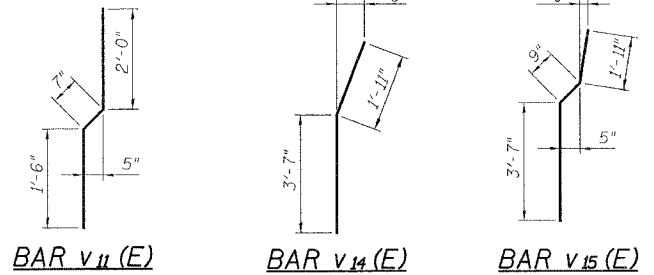
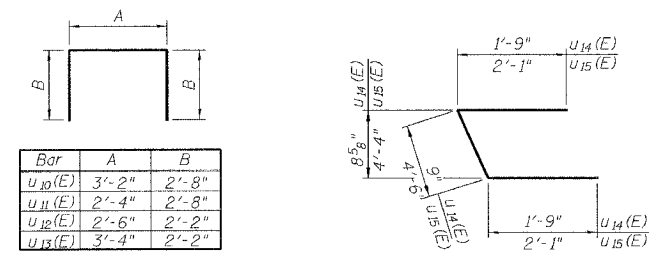
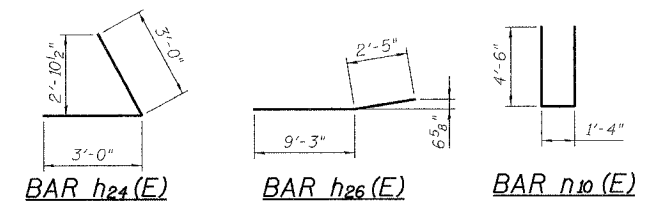
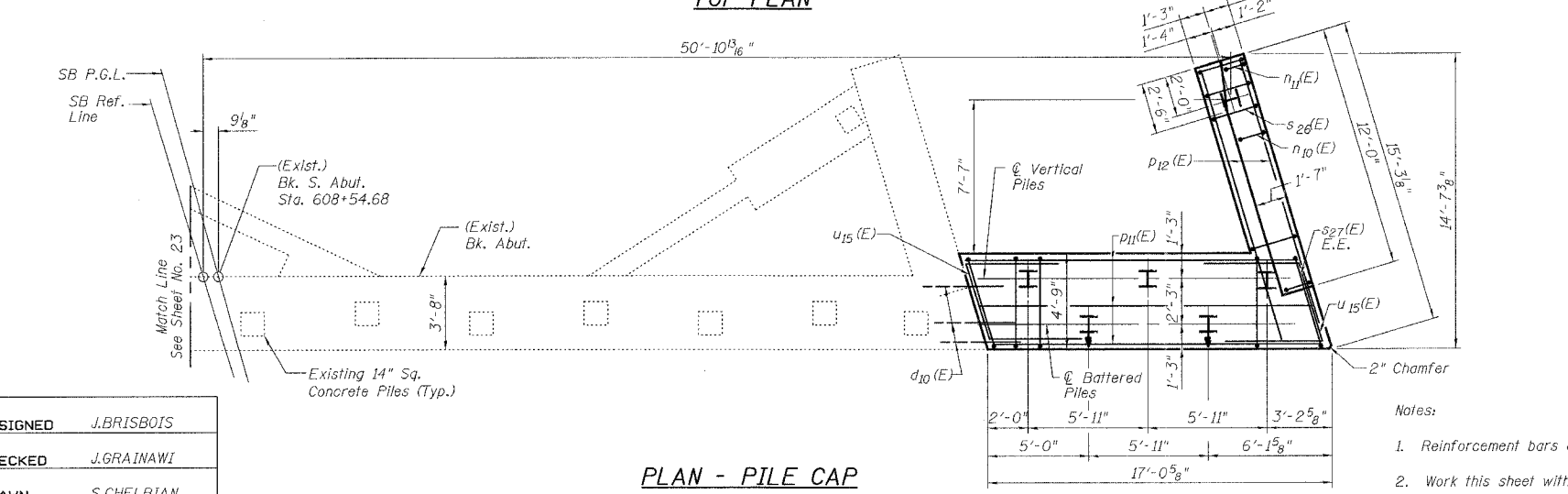
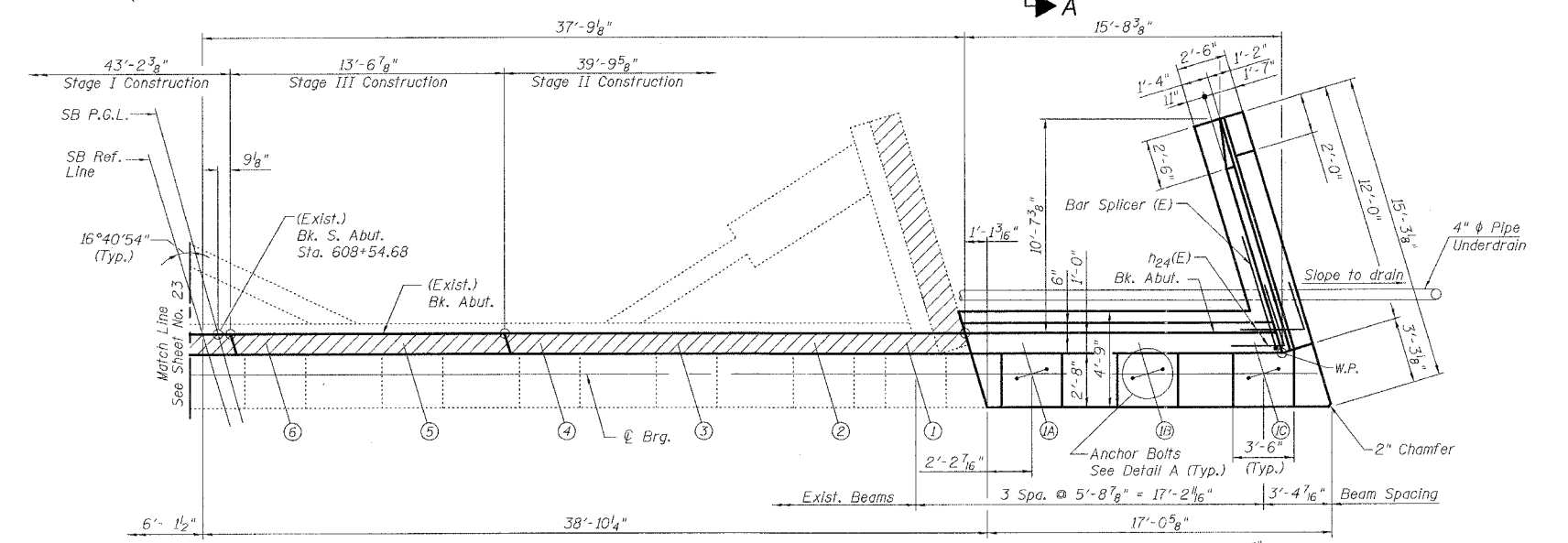
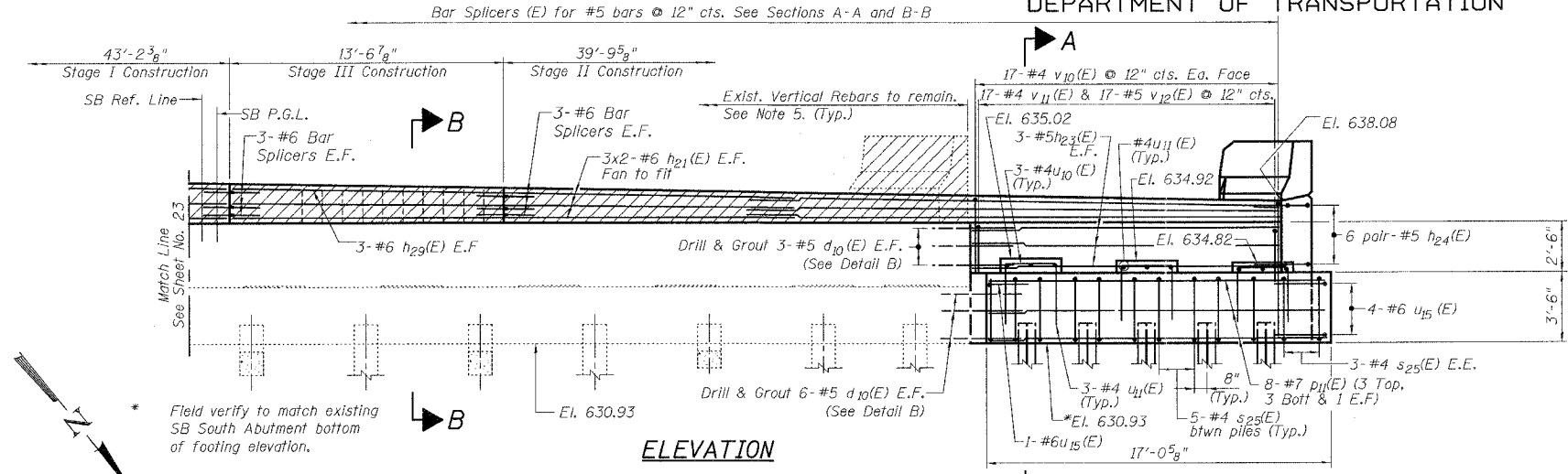
**SOUTH ABUTMENT  
BILL OF MATERIAL**

Bar	No.	Size	Length	Shape
d <sub>10</sub> (E)	36	#5	2'-8"	
h <sub>20</sub> (E)	22	#6	23'-2"	
h <sub>21</sub> (E)	12	#6	20'-4"	
h <sub>22</sub> (E)	6	#5	25'-11"	
h <sub>23</sub> (E)	6	#5	16'-10"	
h <sub>24</sub> (E)	12	#5	6'-0"	
h <sub>25</sub> (E)	10	#4	11'-9"	
h <sub>26</sub> (E)	6	#4	11'-8"	
h <sub>29</sub> (E)	6	#6	13'-4"	
h <sub>30</sub> (E)	2	#6	19'-4"	
n <sub>10</sub> (E)	11	#6	10'-4"	
n <sub>11</sub> (E)	6	#6	5'-2"	
p <sub>10</sub> (E)	8	#7	25'-11"	
p <sub>11</sub> (E)	8	#7	16'-10"	
p <sub>12</sub> (E)	6	#7	13'-6"	
s <sub>25</sub> (E)	68	#4	15'-11"	
s <sub>26</sub> (E)	11	#4	11'-5"	
s <sub>27</sub> (E)	4	#4	16'-3"	
u <sub>10</sub> (E)	22	#4	8'-6"	
u <sub>11</sub> (E)	24	#4	7'-8"	
u <sub>12</sub> (E)	1	#4	6'-10"	
u <sub>13</sub> (E)	1	#4	7'-8"	
u <sub>14</sub> (E)	2	#5	4'-3"	
u <sub>15</sub> (E)	7	#6	8'-8"	
v <sub>10</sub> (E)	86	#4	5'-0"	
v <sub>11</sub> (E)	43	#4	4'-1"	
v <sub>12</sub> (E)	43	#5	3'-4"	
v <sub>13</sub> (E)	12	#6	6'-4"	
v <sub>14</sub> (E)	3	#6	5'-6"	
v <sub>15</sub> (E)	10	#6	6'-3"	
Structure Excavation		Cu. Yd.	49	
Concrete Structures		Cu. Yd.	38.2	
Reinforcement Bars, Epoxy Coated		Pounds	4,960	
Furnishing Steel Piles HP10x42		Foot	490	
Driving Steel Piles		Foot	490	
Metal Shoes		Each	11	
Concrete Removal		Cu. Yd.	14.2	
Porous Granular Embankment, Spectral		Cu. Yd.	58	
Test Pile HP10x42		Each	2	
Bridge Seat Sealer		Sq. Ft.	116	
Geocomposite Wall Drain		Sq. Yd.	36	
Pipe Underdrain for Structures, 4"		Foot	66	

**PILE DATA**

Type: HP 10x42 with Metal Shoes  
Capacity: Driven to refusal  
Est. Length: 44'  
No. Req'd: 5+1 Test Pile

**SOUTH ABUTMENT WIDENING II  
I-55 OVER E&E R.R.  
FAI ROUTE 55-SEC. 2006-032 BY  
WILL COUNTY  
STA. 609+29.37  
STRUCTURE NO. 099-0018 (NB)  
STRUCTURE NO. 099-0019 (SB)**



**MIN. BAR LAPS**

#5	2'-2"
#6	2'-7"
#7	3'-5"

**LEGEND**

- Existing Pile
- Existing Concrete Removal
- Proposed Vertical Pile
- Proposed Batter Pile
- E.F. Each Face
- E.E. Each End

- Notes:
1. Reinforcement bars designated (E) shall be epoxy coated.
  2. Work this sheet with Sheet Nos. 23 & 25.
  3. For details of Bar Splicers, See Sheet 36.
  4. For details of Anchor Bolts, See Sheet No. 35.

DESIGNED	J. BRISBOIS
CHECKED	J. GRAINAWI
DRAWN	S. CHELBIAN
CHECKED	J. GRAINAWI

Date: 7/21/2006

7/19/2006 5:30:19 PM G:\16817\Struct\Draw\Pre-Final\J&E RRR\Final Bridge Contract\022006-032-000-024.dgn