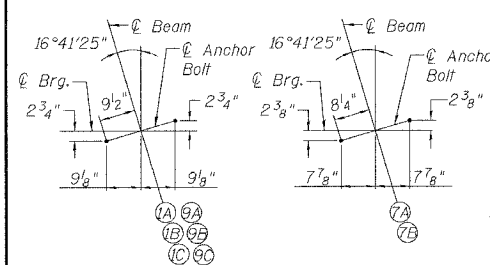


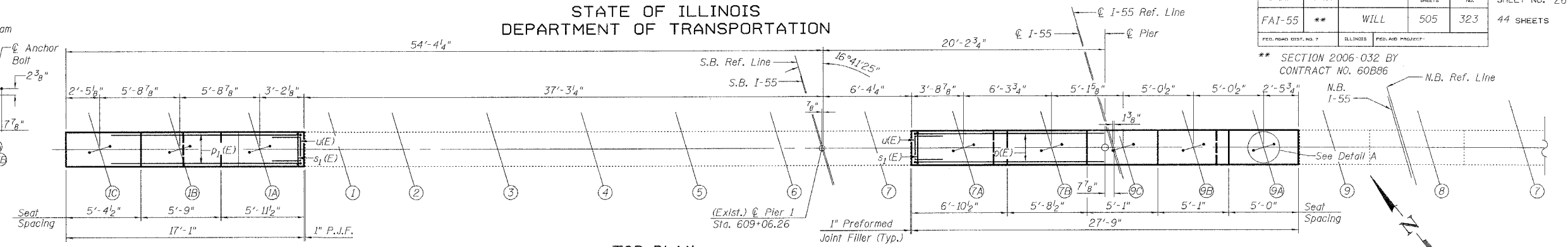
STATE OF ILLINOIS
DEPARTMENT OF TRANSPORTATION

ROUTE NO.	SECTION	COUNTY	SHEET NO.	TOTAL SHEETS
FAI-55	**	WILL	505	323
SHEET NO. 26				
44 SHEETS				

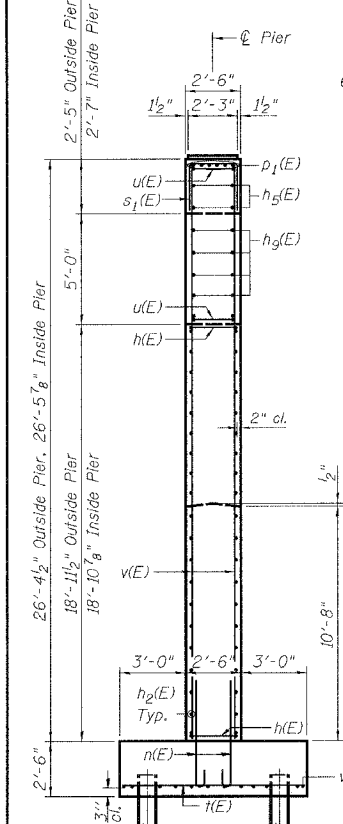
** SECTION 2006-032 BY
CONTRACT NO. 60B86



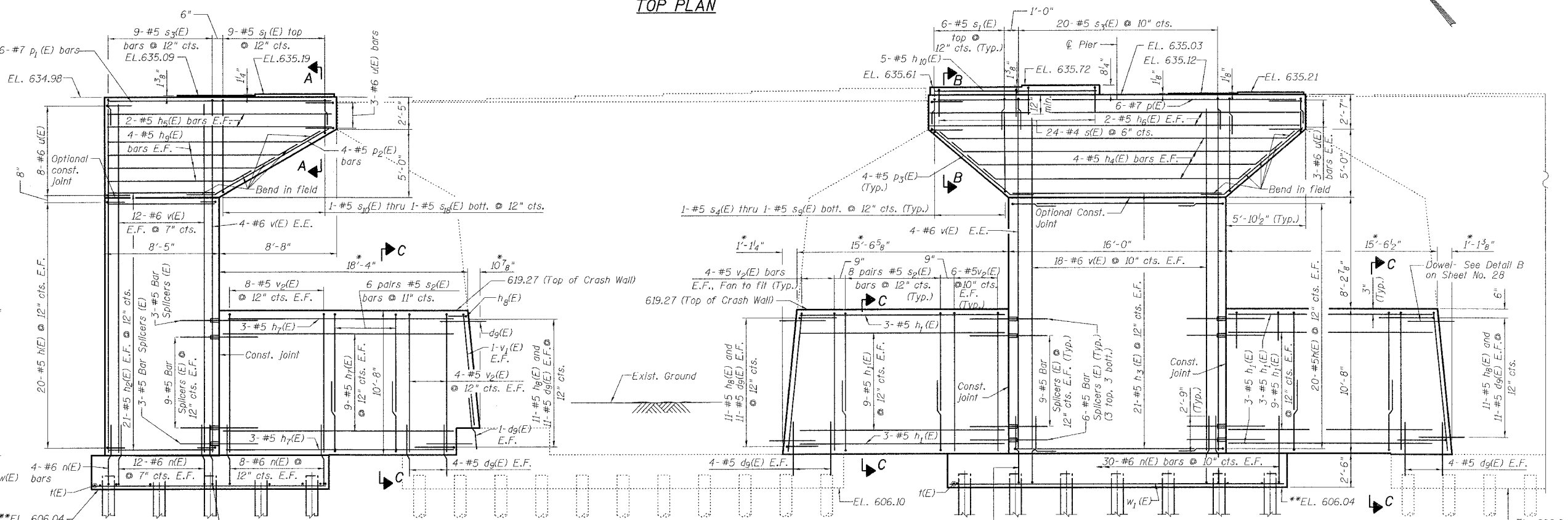
DETAIL A



TOP PLAN



END VIEW



ELEVATION
(Looking North)

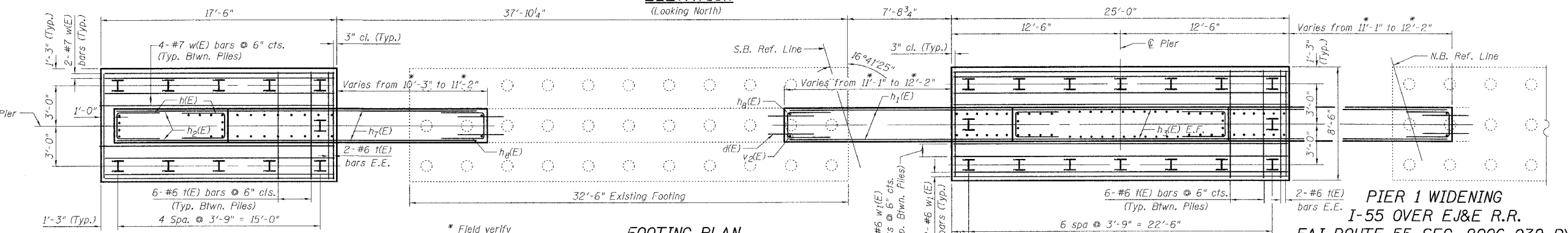
LEGEND
P.J.F. Preformed Joint Filler
E.F. Each Face
E.E. Each End

MIN. BAR LAPS

#5	2'-2"
#6	2'-7"
#7	3'-5"

DESIGNED	P. PILARSKI
CHECKED	M. SHAIKH
DRAWN	P. PILARSKI
CHECKED	M. SHAIKH

Date: 6/30/2006



FOOTING PLAN

PILE DATA

Outside Widening		Inside Widening	
Type:	HP 10x42 with Metal Shoes	Type:	HP 10x42 with Metal Shoes
Capacity:	Driven to refusal	Capacity:	Driven to refusal
Est. Length:	37.5'	Est. Length:	22'
No. Required:	10+1 Test Pile	No. Required:	16

- Notes:
- All exposed edges shall have standard 3/8" chamfers except as noted.
 - Space reinforcement bars in steps to miss anchor bolts.
 - For details of Anchor Bolts, see Sheet No. 35.
 - For details of Bar Splicers, see Sheet No. 36.
 - Four steps monolithically with cap.
 - For Reinforcement Bar Schedule and Bill of Material, See Sheet 28.
 - Reinforcement bars designated (E) shall be epoxy coated.
 - See Sheet 28 for Sections A-A through C-C and Detail B.



PIER 1 WIDENING
I-55 OVER E&E R.R.
FAI ROUTE 55-SEC. 2006-032 BY
WILL COUNTY
STA. 609+29.37
STRUCTURE NO. 099-0018 (NB)
STRUCTURE NO. 099-0019 (SB)

6/30/2006 4:55:36 PM G:\18817AS\In\Road\Pre-Final\I&E RRR\Final Bridge Contract\02202-60B86-000-000-026.dgn