

STATE OF ILLINOIS
DEPARTMENT OF TRANSPORTATION

ROUTE NO.	SECTION	COUNTY	SHEET NO.	SHEET	SHEET NO. 28
FAI-55	**	WILL	505	325	44 SHEETS
FED. ROAD DIST. NO. 7	ILLINOIS	FED. AID PROJECT			

** SECTION 2006-032 BY
CONTRACT NO. 60B86

PIER 1
BILL OF MATERIAL

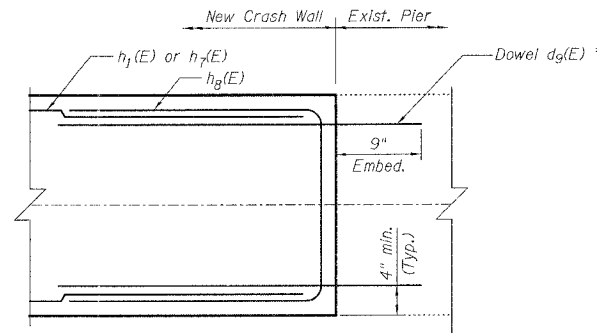
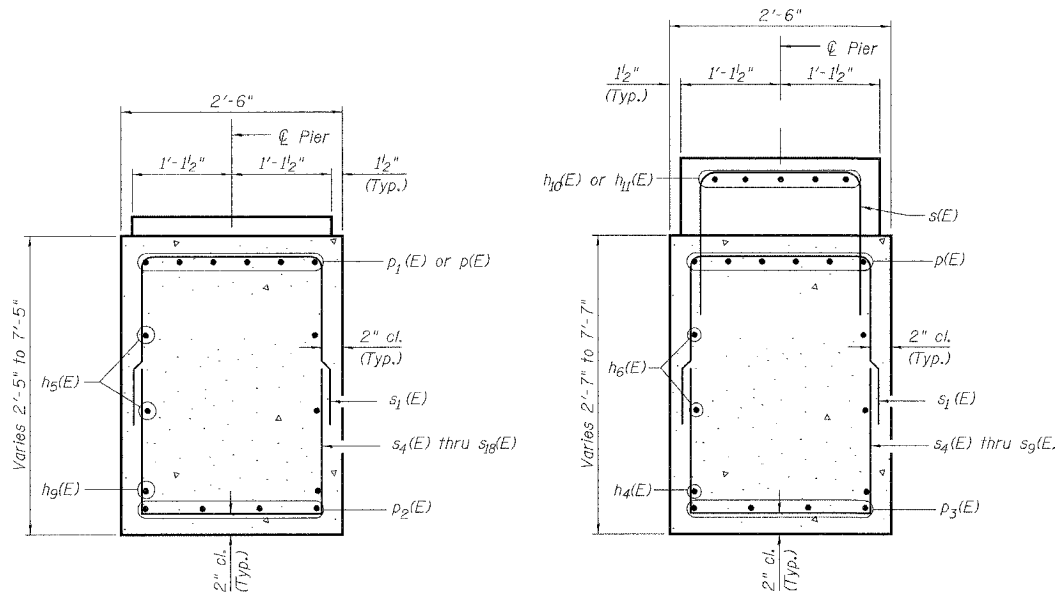
Bar	No.	Size	Length	Shape
d _g (E)	92	#5	3'-9"	—
h(E)	101	#5	6'-6"	—
h ₁ (E)	48	#5	15'-1"	—
h ₂ (E)	42	#5	8'-1"	—
h ₃ (E)	42	#5	15'-8"	—
h ₄ (E)	4	#5	48'-6"	—
h ₅ (E)	4	#5	16'-8"	—
h ₆ (E)	4	#5	27'-5"	—
h ₇ (E)	24	#5	17'-2"	—
h ₈ (E)	33	#5	9'-7"	—
h ₉ (E)	4	#5	27'-0"	—
h ₁₀ (E)	5	#5	12'-1"	—
n(E)	116	#6	5'-8"	—
p(E)	6	#7	27'-5"	—
p ₁ (E)	6	#7	16'-9"	—
p ₂ (E)	4	#5	12'-0"	—
p ₃ (E)	8	#5	9'-7"	—
s(E)	24	#4	5'-11"	—
s ₁ (E)	21	#5	6'-6"	—
s ₂ (E)	44	#5	15'-0"	—
s ₃ (E)	29	#5	9'-2"	—
s ₄ (E)	2	#5	7'-0"	—
s ₅ (E)	2	#5	8'-10"	—
s ₆ (E)	2	#5	10'-6"	—
s ₇ (E)	2	#5	12'-4"	—
s ₈ (E)	2	#5	14'-0"	—
s ₉ (E)	2	#5	15'-10"	—
s ₁₀ (E)	1	#5	6'-8"	—
s ₁₁ (E)	1	#5	7'-10"	—
s ₁₂ (E)	1	#5	9'-0"	—
s ₁₃ (E)	1	#5	10'-2"	—
s ₁₄ (E)	1	#5	11'-4"	—
s ₁₅ (E)	1	#5	12'-6"	—
s ₁₆ (E)	1	#5	13'-8"	—
s ₁₇ (E)	1	#5	14'-10"	—
s ₁₈ (E)	1	#5	16'-0"	—
u(E)	17	#6	7'-3"	—
v(E)	76	#6	25'-6"	—
v ₁ (E)	2	#5	10'-6"	—
v ₂ (E)	64	#5	12'-6"	—
w(E)	12	#7	17'-2"	—
w ₁ (E)	12	#6	12'-8"	—
Structure Excavation	Cu. Yd.	180		
Concrete Structures	Cu. Yd.	154.1		
Reinforcement Bars, Epoxy Coated	Pound	12,630		
Furn. Steel Piles HP10x42	Foot	727		
Drive Steel Piles HP10x42	Foot	727		
Test Piles	Each	1		
Metal Shoes	Each	26		

PIER 2
BILL OF MATERIAL

Bar	No.	Size	Length	Shape
d _g (E)	92	#5	3'-9"	—
h(E)	101	#5	6'-6"	—
h ₁ (E)	48	#5	15'-1"	—
h ₂ (E)	42	#5	8'-1"	—
h ₃ (E)	42	#5	15'-8"	—
h ₄ (E)	4	#5	48'-6"	—
h ₅ (E)	4	#5	16'-8"	—
h ₆ (E)	4	#5	27'-5"	—
h ₇ (E)	24	#5	17'-2"	—
h ₈ (E)	33	#5	9'-7"	—
h ₉ (E)	4	#5	27'-0"	—
h ₁₀ (E)	5	#5	4'-6"	—
n(E)	116	#6	5'-8"	—
p(E)	6	#7	27'-5"	—
p ₁ (E)	6	#7	16'-9"	—
p ₂ (E)	4	#5	12'-0"	—
p ₃ (E)	8	#5	9'-7"	—
s(E)	10	#4	5'-11"	—
s ₁ (E)	21	#5	6'-6"	—
s ₂ (E)	44	#5	15'-0"	—
s ₃ (E)	29	#5	9'-2"	—
s ₄ (E)	2	#5	7'-0"	—
s ₅ (E)	2	#5	8'-10"	—
s ₆ (E)	2	#5	10'-6"	—
s ₇ (E)	2	#5	12'-4"	—
s ₈ (E)	2	#5	14'-0"	—
s ₉ (E)	2	#5	15'-10"	—
s ₁₀ (E)	1	#5	6'-8"	—
s ₁₁ (E)	1	#5	7'-10"	—
s ₁₂ (E)	1	#5	9'-0"	—
s ₁₃ (E)	1	#5	10'-2"	—
s ₁₄ (E)	1	#5	11'-4"	—
s ₁₅ (E)	1	#5	12'-6"	—
s ₁₆ (E)	1	#5	13'-8"	—
s ₁₇ (E)	1	#5	14'-10"	—
s ₁₈ (E)	1	#5	16'-0"	—
u(E)	17	#6	7'-3"	—
v(E)	76	#6	25'-6"	—
v ₁ (E)	2	#5	10'-6"	—
v ₂ (E)	64	#5	12'-6"	—
w(E)	12	#7	17'-2"	—
w ₁ (E)	12	#6	24'-8"	—
Structure Excavation	Cu. Yd.	180		
Concrete Structures	Cu. Yd.	152.3		
Reinforcement Bars, Epoxy Coated	Pound	12,540		
Furn. Steel Piles HP10x42	Foot	658		
Drive Steel Piles HP10x42	Foot	658		
Test Piles	Each	1		
Metal Shoes	Each	26		

- Notes:
- Reinforcement bars designated (E) shall be epoxy coated.
 - For details of Bar Splitters, See Sheet No. 36.

PIER 1 & 2 DETAILS
I-55 OVER EJ&E R.R.
FAI ROUTE 55-SEC. 2006-032 BY
WILL COUNTY
STA. 609+29.37
STRUCTURE NO. 099-0018 (NB)
STRUCTURE NO. 099-0019 (SB)

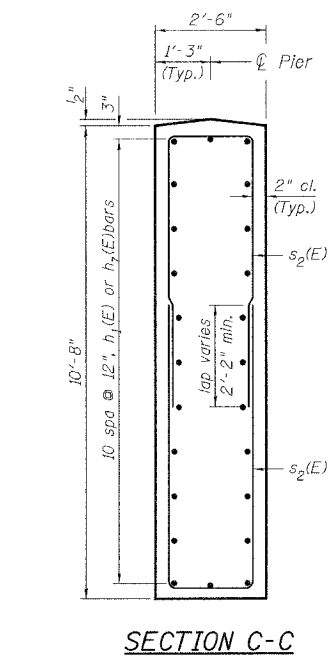
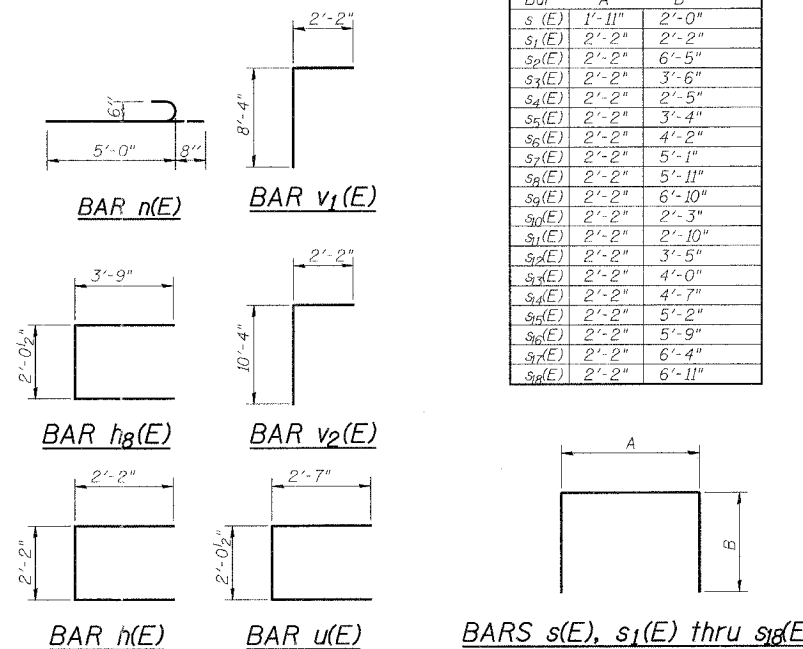


DETAIL B

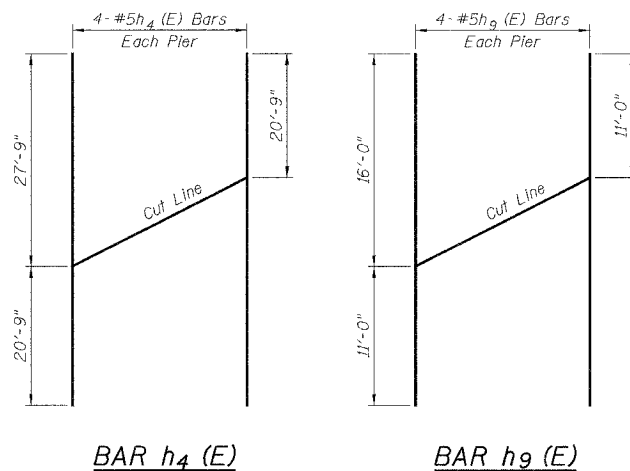
* Drill and grout #5 d_g(E) bars in 9" drilled holes according to Section 584 of the Standard Specifications. Method and grout are subject to the approval of the Engineer. Cost included with Reinforcement Bars, Epoxy Coated.

A & B DIMENSIONS

Bar	A	B
s (E)	1'-11"	2'-0"
s ₁ (E)	2'-2"	2'-2"
s ₂ (E)	2'-2"	6'-5"
s ₃ (E)	2'-2"	3'-6"
s ₄ (E)	2'-2"	2'-5"
s ₅ (E)	2'-2"	3'-4"
s ₆ (E)	2'-2"	4'-2"
s ₇ (E)	2'-2"	5'-1"
s ₈ (E)	2'-2"	5'-11"
s ₉ (E)	2'-2"	6'-10"
s ₁₀ (E)	2'-2"	2'-3"
s ₁₁ (E)	2'-2"	2'-10"
s ₁₂ (E)	2'-2"	3'-5"
s ₁₃ (E)	2'-2"	4'-0"
s ₁₄ (E)	2'-2"	4'-7"
s ₁₅ (E)	2'-2"	5'-2"
s ₁₆ (E)	2'-2"	5'-9"
s ₁₇ (E)	2'-2"	6'-4"
s ₁₈ (E)	2'-2"	6'-11"



SECTION C-C



BAR h₄(E)

BAR h₉(E)

DESIGNED	P. PILARSKI
CHECKED	M. SHAIKH
DRAWN	P. PILARSKI
CHECKED	M. SHAIKH

Note:
See Sheet Nos. 26 and 27 for location of Section cuts.

Date: 6/30/2006