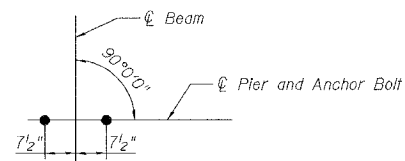


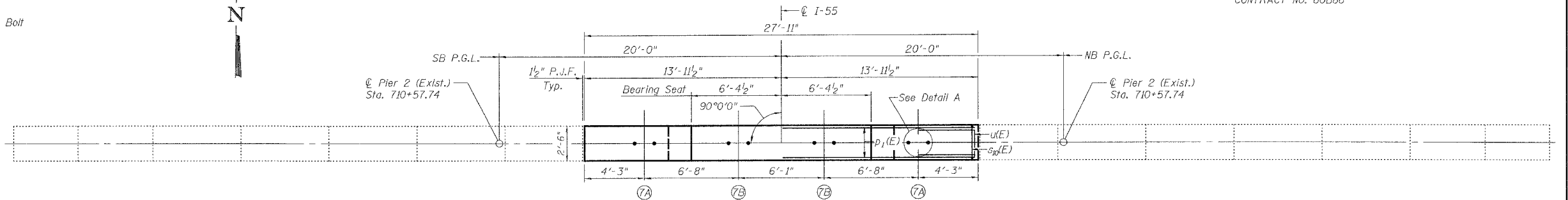
STATE OF ILLINOIS
DEPARTMENT OF TRANSPORTATION

ROUTE NO.	SECTION	COUNTY	TOTAL SHEETS	SHEET NO.	SHEET NO.
FAI-55	**	WILL	505	364	32 SHEETS
FED. ROAD DIST. NO. 7	ILLINOIS	FED. AID PROJECT			

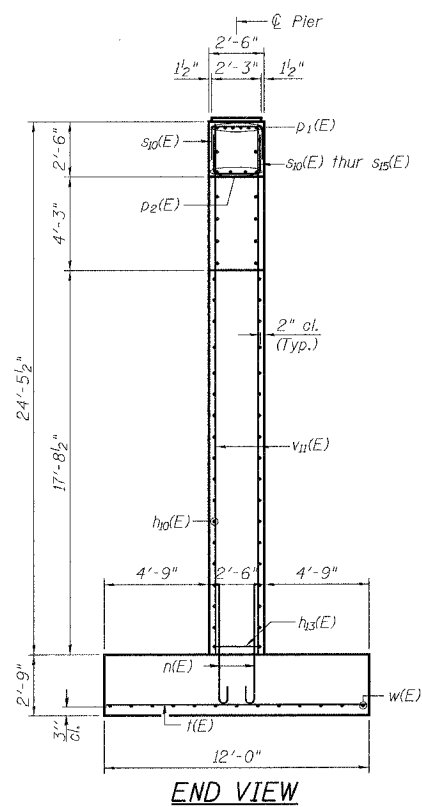
** SECTION 2006-032 BY
CONTRACT NO. 60B86



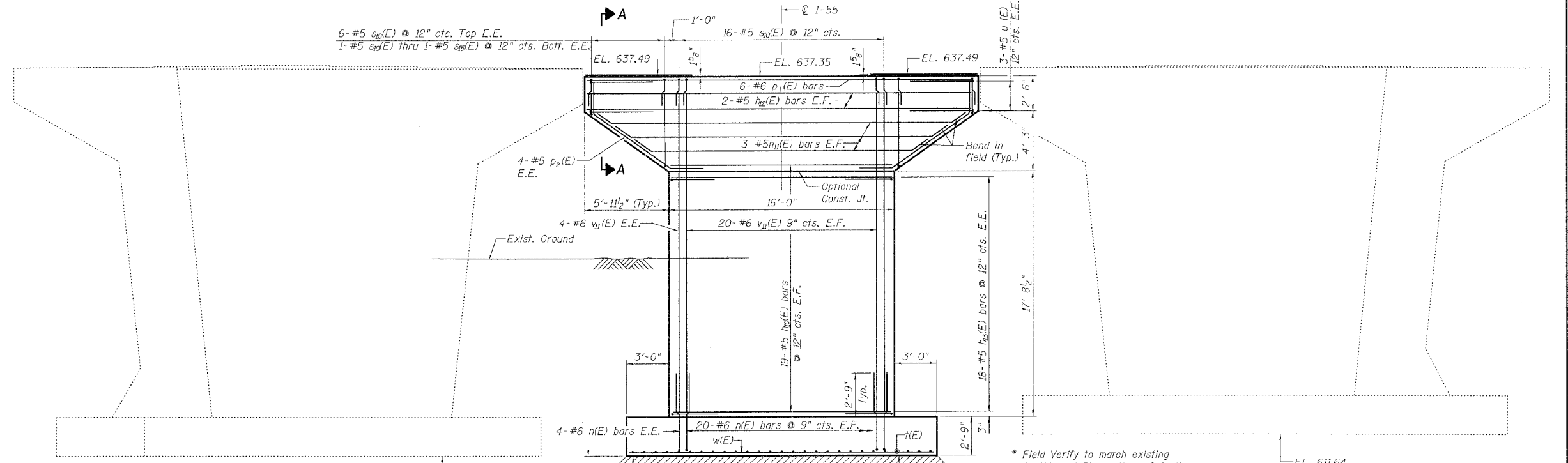
DETAIL A



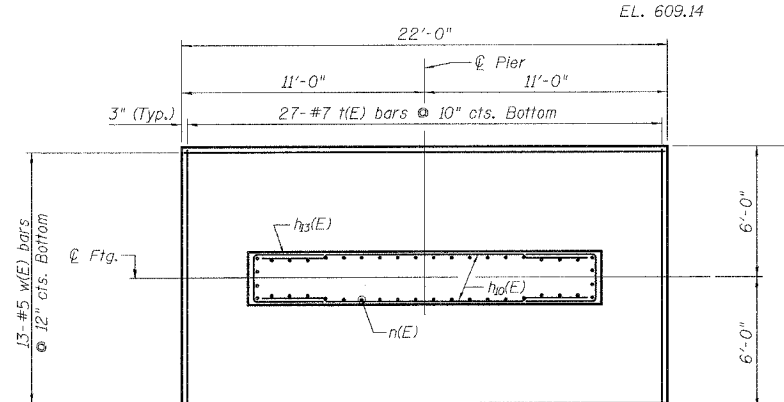
TOP PLAN



END VIEW



ELEVATION
(Looking North)



FOOTING PLAN

LEGEND:

P.J.F. Performed Joint Filler
E.F. Each Face
E.E. Each End

Notes:

1. Space reinforcement bars in steps to miss anchor bolts.
2. All exposed edges shall have standard $\frac{3}{4}$ " chamfers except as noted.
3. Reinforcement bars designated (E) shall be epoxy coated.
4. See Sheet No. 24 for Section A-A.
5. Pour step monolithically with cap.

DESIGNED	P. PILARSKI
CHECKED	M. SHAIKH
DRAWN	A. ASKARI
CHECKED	M. SHAIKH

Date: 6/30/2006

* Field Verify to match existing Southbound Pier bottom of footing elevation.
* EL. 610.14
Limits of Removal and Disposal of Unsuitable Material EL. 609.14

PIER 2 WIDENING
I-55 OVER MS (ABANDONED) R.R.
FAI ROUTE 55-SEC. 2006-032 BY
WILL COUNTY
STA. 710+34.86
STRUCTURE NO. 099-0022 (NB)
STRUCTURE NO. 099-0023 (SB)



6/30/2006 4:21:48 PM C:\16817\Struct\Cadd\PIE-Final\MS RR-Final\MS RR-Final Bridge Contract\02205-60B86-000-000-023.dgn