

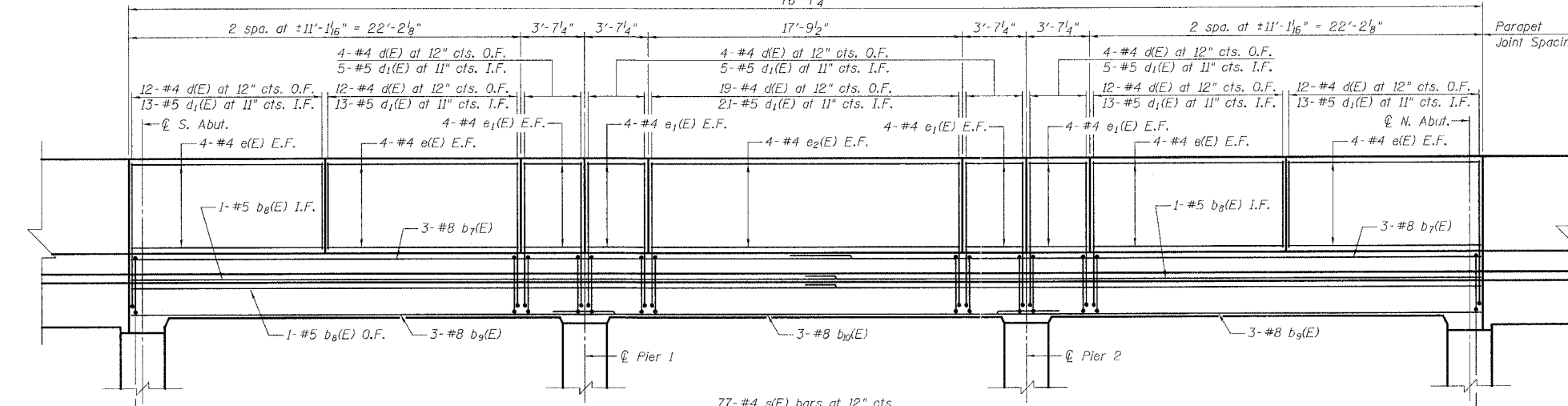
STATE OF ILLINOIS
DEPARTMENT OF TRANSPORTATION

ROUTE NO.	SECTION	COUNTY	SHEETS	SHEET	SHEET NO.
FAI-55	**	WILL	505	381	16 SHEETS
FED. ROAD DIST. NO. 7		ILLINOIS	FED. AID PROJECT		

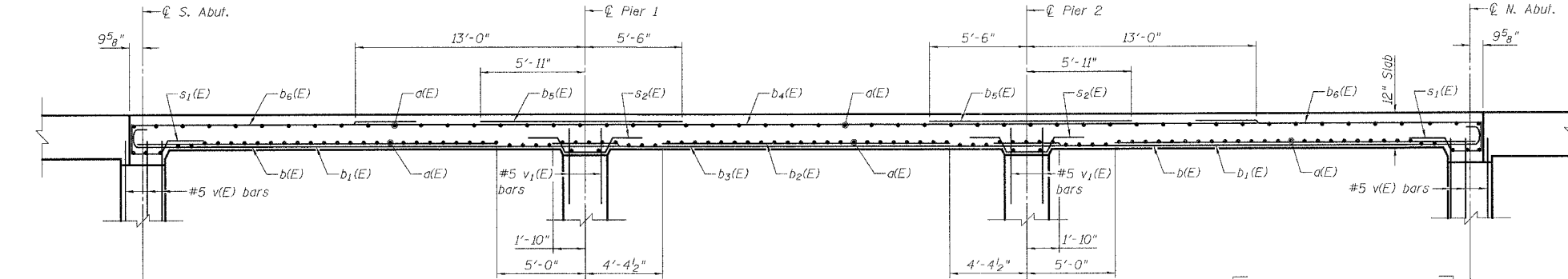
** SECTION 2006-032 BY
CONTRACT NO. 60B86

BILL OF MATERIAL
NB & SB SUPERSTRUCTURE

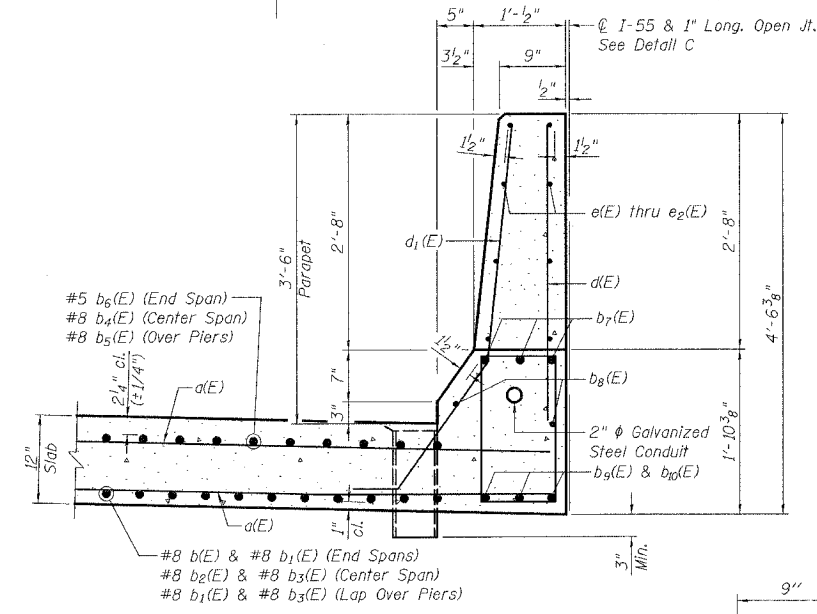
Bar	No.	Size	Length	Shape
d(E)	310	#5	14'-7"	—
d ₁ (E)	24	#5	15'-7"	—
b(E)	72	#8	20'-0"	—
b ₁ (E)	76	#8	28'-5"	—
b ₂ (E)	36	#7	16'-3"	—
b ₃ (E)	38	#8	28'-8"	—
b ₄ (E)	34	#8	51'-0"	—
b ₅ (E)	64	#8	11'-5"	—
b ₆ (E)	68	#5	16'-1"	—
b ₇ (E)	12	#8	40'-6"	—
b ₈ (E)	8	#5	39'-4"	—
b ₉ (E)	12	#8	28'-0"	—
b ₁₀ (E)	6	#8	29'-6"	—
a(E)	166	#4	3'-6"	—
d ₁ (E)	186	#5	4'-11"	—
e(E)	64	#4	10'-10"	—
e ₁ (E)	64	#4	3'-4"	—
e ₂ (E)	16	#4	17'-6"	—
s(E)	154	#4	5'-1"	—
s ₁ (E)	80	#5	5'-0"	—
s ₂ (E)	80	#5	8'-1"	—
Reinforcement Bars, Epoxy Coated		Pound	33,290	
Concrete Superstructure		Cu. Yd.	109.5	
Bridge Deck Grooving		Sq. Yd.	212	
Floor Drains		Each	6	
Protective Coat *		Sq. Yd.	1,061	
Preformed Joint Seal, 2 1/2"		Foot	77	
Conduit Embedded in Structure, 2" Dia., Galvanized Steel		Foot	154	



ELEVATION OF EDGE BEAM & PARAPET



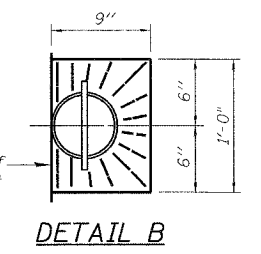
LONGITUDINAL DECK SECTION



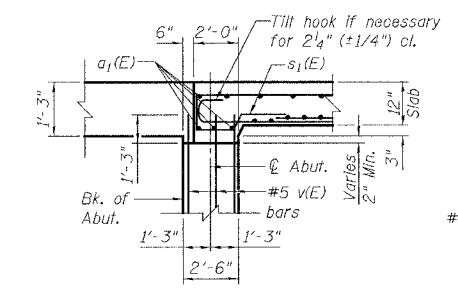
SECTION THRU MEDIAN PARAPET

DESIGNED	S.CHELBIAN
CHECKED	A.HAMMAD
DRAWN	S.CHELBIAN
CHECKED	J.GRAINAWI

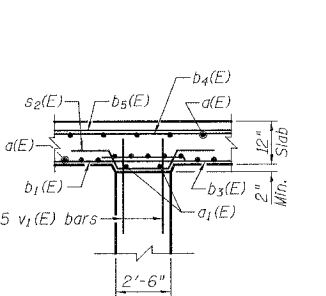
Date: 6/30/2006



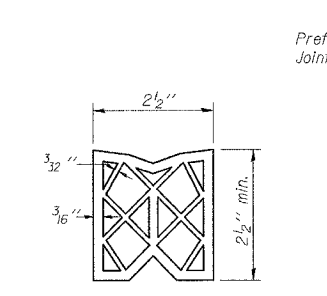
DETAIL B



SECTION A-A

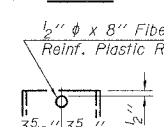


SECTION B-B

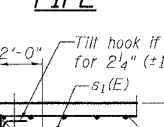


PREFORMED JOINT SEAL

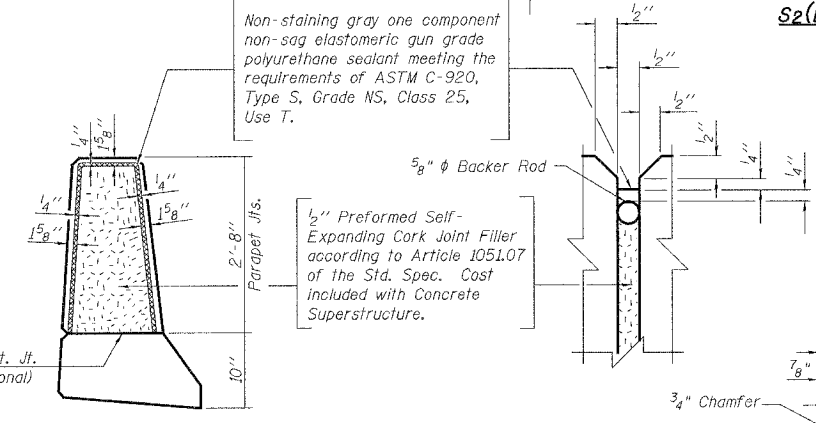
ALUMINUM TUBE



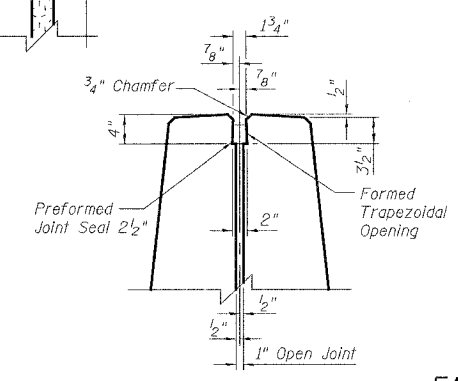
FIBERGLASS PIPE



PARAPET JOINT DETAIL



DETAIL C



MIN. BAR LAPS

- #5 1'-8"
- #8 3'-5"
- #8 b₇(E), #8 b₉(E), & #8 b₁₀(E) bars - 4'-6"
- #5 b₆(E) - 2'-2"

- Notes:
- Reinforcement bars designated (E) shall be epoxy coated.
 - Cut longitudinal reinforcement to clear Floor Drains.
 - Fiberglass pipe shall conform to ASTM D2996, with short-time rupture strength hoop tensile stress of 30,000 PSI minimum.
 - The exterior surfaces of the floor drains shall be coated or pigmented by the manufacturer with a color that matches the concrete.
 - v(E) and v₁(E) bars are billed with Abutments and Piers, respectively.
 - Work this sheet with Sheet Nos. 6 & 7.

SUPERSTRUCTURE DETAILS
I-55 OVER MINK CREEK
FAI ROUTE 55-SEC. 2006-032 BY
WILL COUNTY
STA. 630+07.11
STRUCTURE NO. 099-4615 (NB)
STRUCTURE NO. 099-4616 (SB)



6/30/2006 3:49:22 PM G:\16817\Structural\Drawings\Final\I55 MINK CREEK\Final Bridge Contract\02206-50B86-00-000-008.dgn