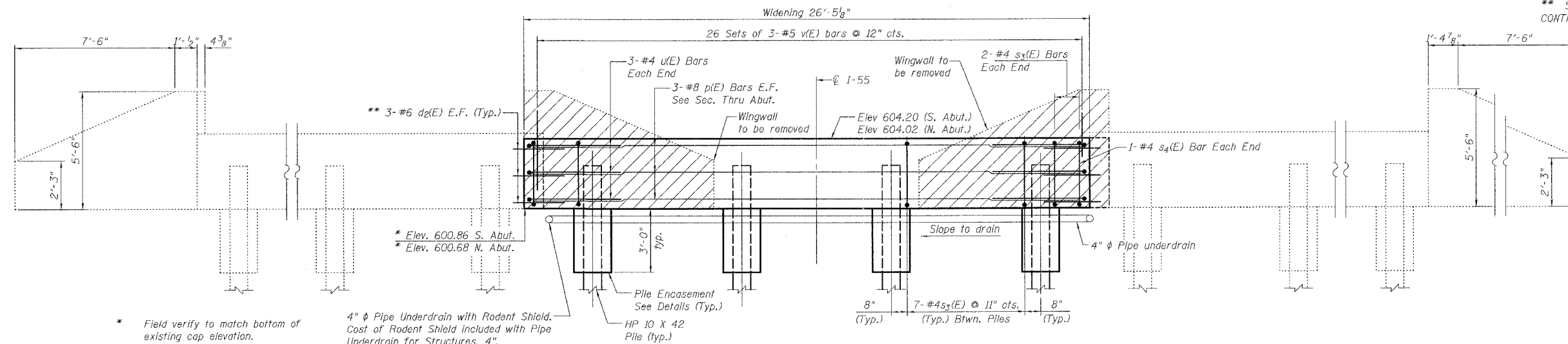


STATE OF ILLINOIS
DEPARTMENT OF TRANSPORTATION

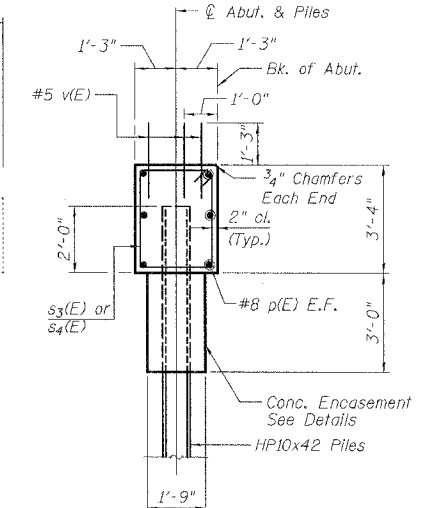
ROUTE NO.	SECTION	COUNTY	TOTAL SHEETS	SHEET NO.	SHEET NO. 9
FAI-55	**	WILL	505	382	16 SHEETS
FED. ROAD DIST. NO. 7	ILLINOIS	FED. AID PROJECT			

** SECTION 2006-032 BY
CONTRACT NO. 60B86



ELEVATION

(North Abutment shown, South Abutment Similar)

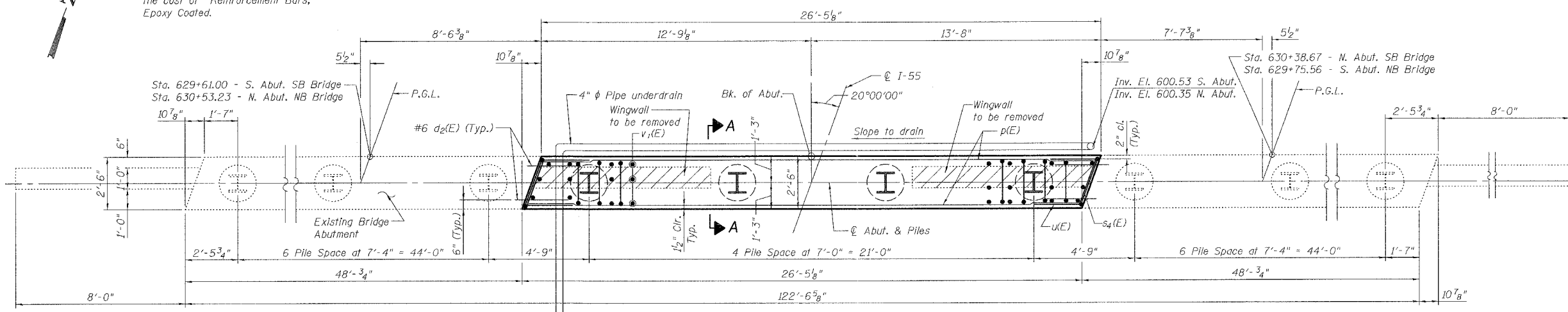


SECTION A-A

* Field verify to match bottom of existing cap elevation.

4" φ Pipe Underdrain with Rodent Shield. Cost of Rodent Shield included with Pipe Underdrain for Structures, 4".

** Drill and grout #6 d2(E) Bars in drilled holes according to Section 584 of the Standard Specifications. Minimum embedment shall be 9" Cost included in the cost of Reinforcement Bars, Epoxy Coated.



ABUTMENT TOP PLAN

**BILL OF MATERIAL
NORTH AND SOUTH ABUTMENT**

Bar No.	Size	Length	Shape
d2(E)	24 #6	3'-4"	—
v(E)	156 #5	2'-3"	—
p(E)	12 #8	26'-0"	—
s3(E)	50 #4	11'-3"	□
s4(E)	50 #4	11'-5"	□
u(E)	12 #5	6'-4"	—
Concrete Removal	Cu. Yd.	5.3	
Concrete Structures	Cu. Yd.	16.3	
Reinforcement Bars, (Epoxy Coated)	Pound	1,800	
Structure Excavation	Cu. Yd.	55	
Furnishing Steel			
Pile HP 10 X42	Foot	167	
Driving Steel Piles	Foot	167	
Test Piles	Each	2	
Metal Shoes	Each	6	
Pipe Underdrain for Structures, 4"	Foot	73	

Reinforcement bars designated (E) shall be epoxy coated.

PILE DATA

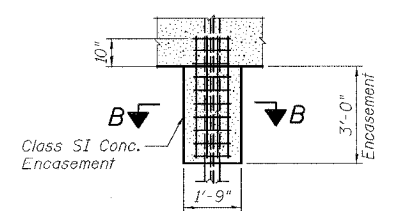
Type: Steel HP 10x42 with metal shoes
Capacity: Driven to refusal
Est. Length: See Table

ESTIMATED PILE LENGTHS

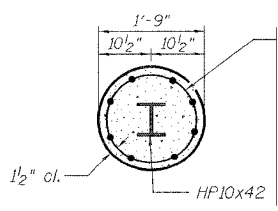
	S. Abut.	N. Abut.
SB	26'	31'
NB	26'	27'

DESIGNED	P. PILARSKI
CHECKED	A. HAMMAD
DRAWN	A. ASKARI
CHECKED	A. HAMMAD

Date: 6/30/2006

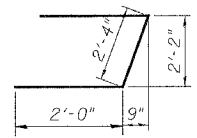


PILE ENCASEMENT DETAILS

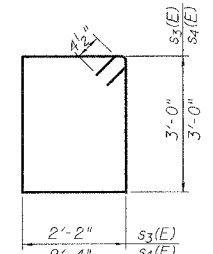


SECTION B-B

Welded wire fabric 6x6-W4.0xW4.0 weighing 58#/100 sq. ft. The of excavation, concrete encasement and reinforcement is incidental to the cost of furnishing piles. Forms for encasement may be omitted when soil conditions permits.



BAR u(E)



BAR s3(E) & s4(E)

LEGEND

- Designates Concrete Removal
- E.F. = Each Face
- B.F. = Back Face
- F.F. = Front Face

**ABUTMENT WIDENING & DETAILS
I-55 OVER MINK CREEK
FAI ROUTE 55-SEC. 2006-032 BY
WILL COUNTY
STA. 630+07.11
STRUCTURE NO. 099-4615 (NB)
STRUCTURE NO. 099-4616 (SB)**



6/30/2006 3:42:35 PM C:\16817\1\StructCade\Pre-Fin\MINX CREEK\Final Bridge Contract\092206-09B86-000-000.dgn