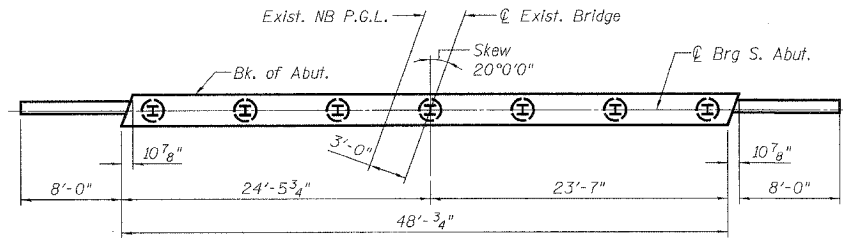


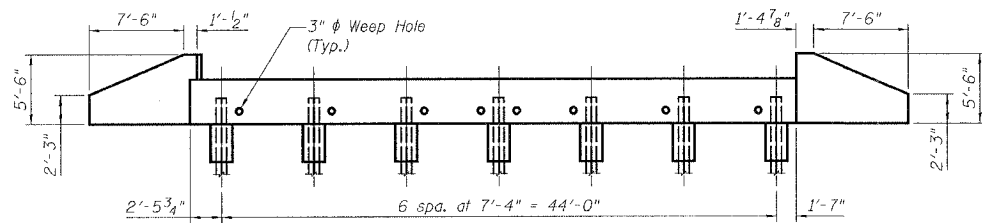
STATE OF ILLINOIS
DEPARTMENT OF TRANSPORTATION

ROUTE NO.	SECTION	COUNTY	TOTAL SHEETS	SHEET NO.	SHEET NO. 12 16 SHEETS
FAI-55	**	WILL	505	385	
FED. ROAD DIST. NO. 7		ILLINOIS	FED. AID PROJECT		

** SECTION 2006-032 BY
CONTRACT NO. 60B86

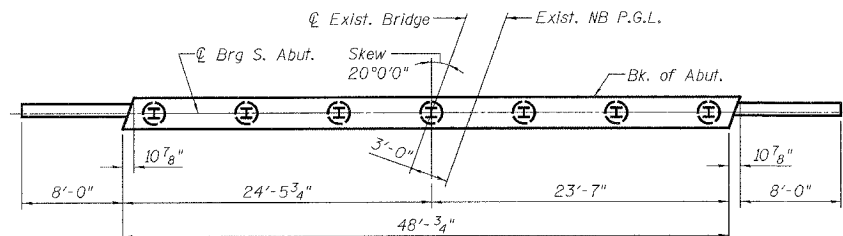


NORTH ABUTMENT PLAN (NB)

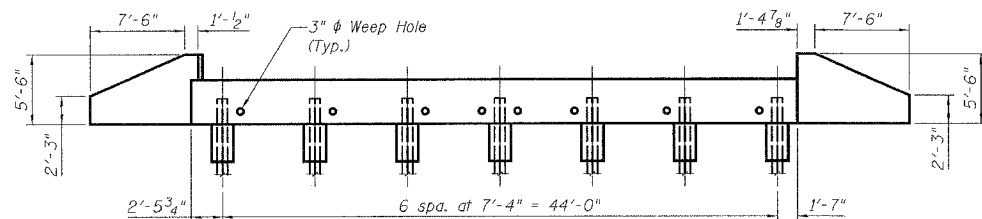


NORTH ABUTMENT ELEVATION (NB)

(Looking North)

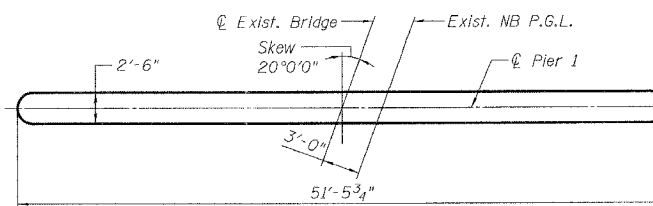


SOUTH ABUTMENT PLAN (NB)

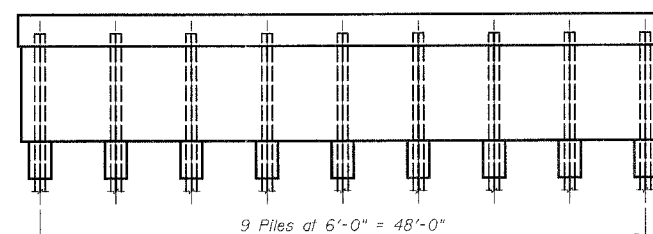


SOUTH ABUTMENT ELEVATION (NB)

(Looking South)

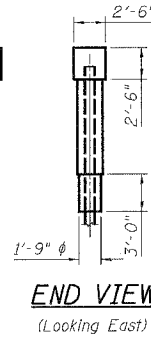


PIER 1 PLAN (NB)



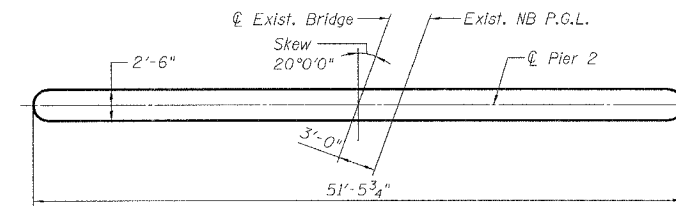
PIER 1 ELEVATION (NB)

(Looking South)

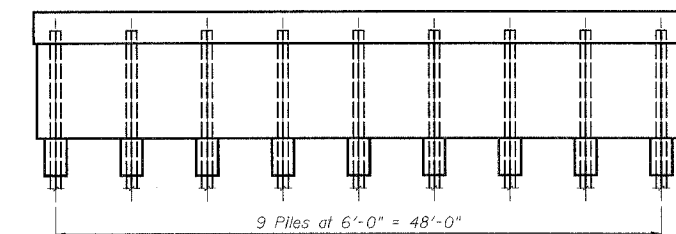


END VIEW

(Looking East)

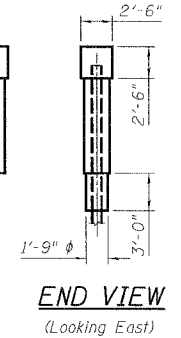


PIER 2 PLAN (NB)



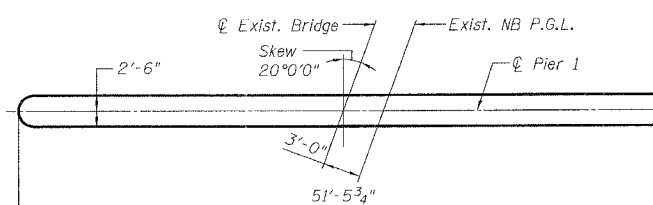
PIER 2 ELEVATION (NB)

(Looking South)

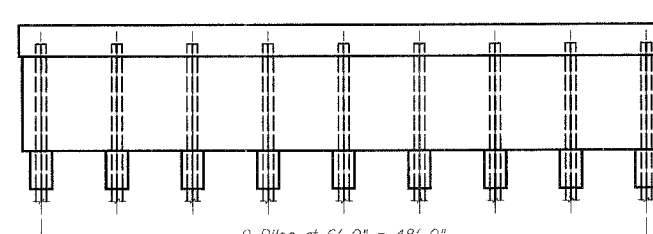


END VIEW

(Looking East)

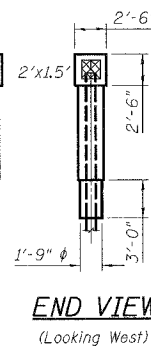


PIER 1 PLAN (NB)



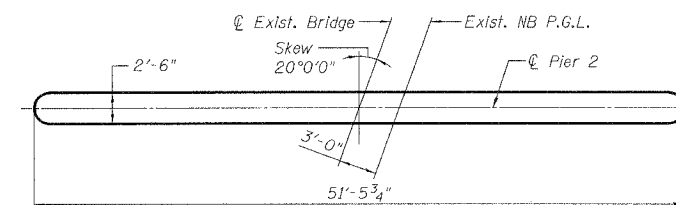
PIER 1 ELEVATION (NB)

(Looking North)

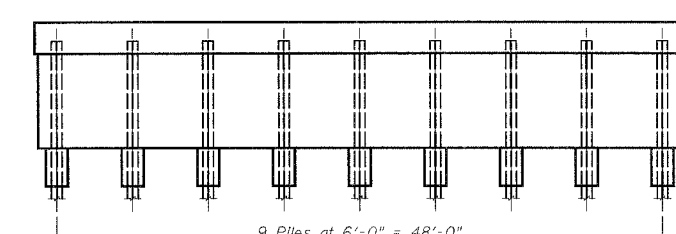


END VIEW

(Looking West)

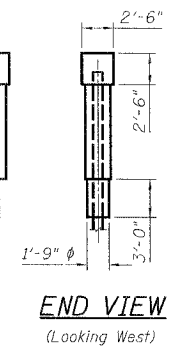


PIER 2 PLAN (NB)



PIER 2 ELEVATION (NB)

(Looking North)



END VIEW

(Looking West)

NOTES:

- Existing reinforcing bars that have been cut and/or damaged during repair operations shall be supplemented by new in kind reinforcing bars. New bars shall be lapped a minimum of 32 bar diameters to existing bars. A mechanical bar splicer shall be used when it is not feasible to provide the minimum bar lap. No welding of bars shall be performed. See Special Provisions.
- Crack widths shown to be repaired are 1/8" \pm 1/16" unless otherwise noted.

LEGEND

Spalled or Unsound Concrete

BILL OF MATERIALS

Item	Unit	Total
Structural Repair of Concrete \leq 5 in.	Sq. Ft.	3.0

DESIGNED	S.CHELBIAN
CHECKED	A.HAMMAD
DRAWN	S.CHELBIAN
CHECKED	J.GRAINAWI

Date: 6/30/2006



SUBSTRUCTURE REPAIRS II (NB)
I-55 OVER MINK CREEK
FAI ROUTE 55-SEC. 2006-032 BY
WILL COUNTY
STA. 630+07.11
STRUCTURE NO. 099-4615 (NB)
STRUCTURE NO. 099-4616 (SB)