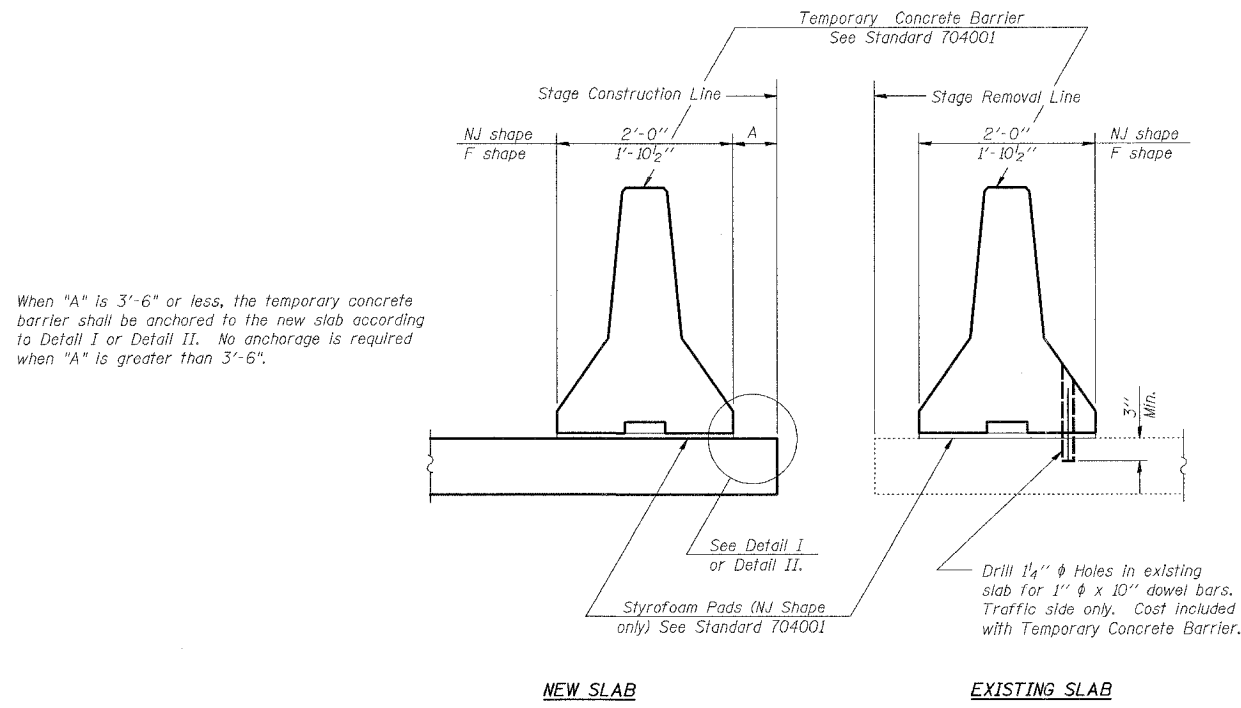


STATE OF ILLINOIS
DEPARTMENT OF TRANSPORTATION

ROUTE NO.	SECTION	COUNTY	TOTAL SHEETS	SHEET NO.	SHEET NO. 13 16 SHEETS
FAI-55	**	WILL	505	386	
FED. ROAD DIST. NO. 7		ILLINOIS	FED. AID PROJECT		

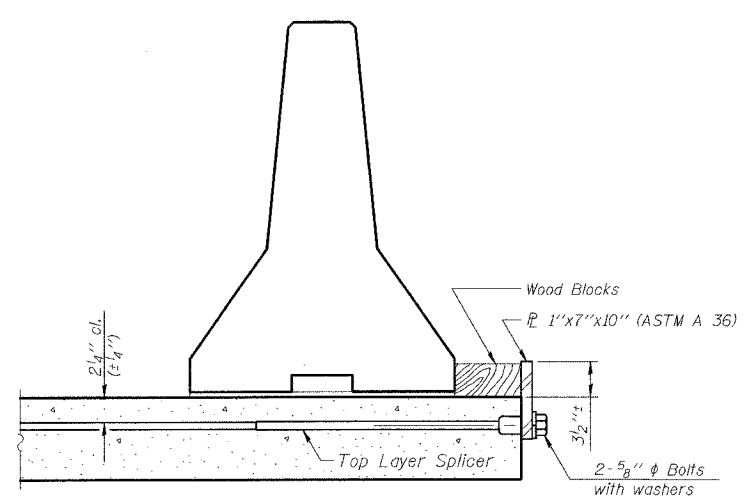
** SECTION 2006-032 BY
CONTRACT NO. 60B86



SECTIONS THRU SLAB

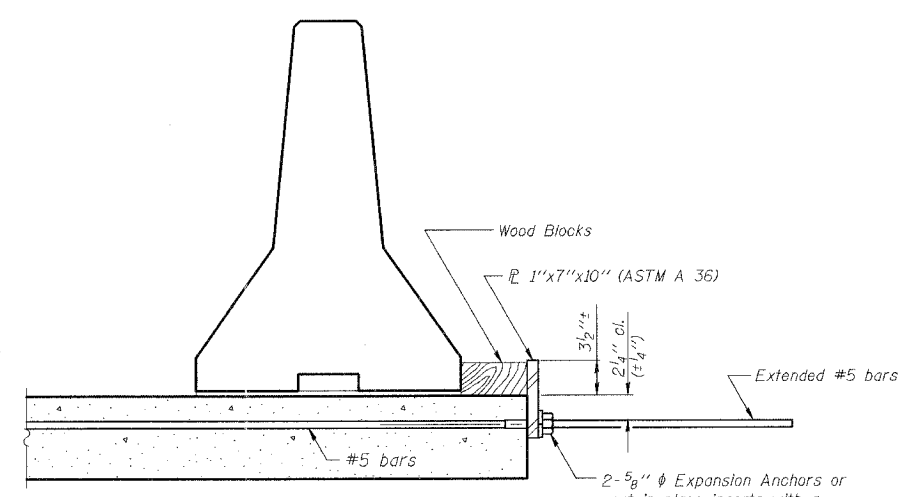
NOTES

- Detail I - With Bar Splicer or Couplers:
Connect one (1) 1"x7"x10" steel P to the top layer of couplers with 2-5/8" φ bolts screwed to coupler at approximate C of each barrier panel.
- Detail II - With Extended Reinforcement Bars:
Connect one (1) 1"x7"x10" steel P to the concrete slab with 2-5/8" φ Expansion Anchors or cast in place inserts spaced between the top layer of reinforcement at approximate C of each barrier panel.
- Cost of anchorage is included with Temporary Concrete Barrier.



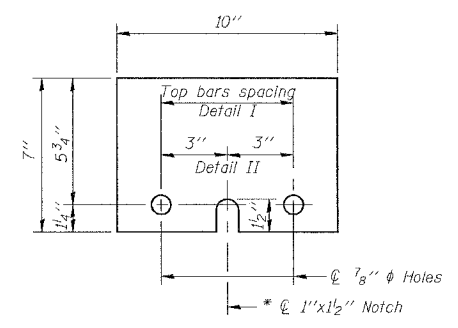
DETAIL I

The 1"x7"x10" Plate shall not be removed until Stage II Construction forms and reinforcement bars are in place.



DETAIL II

The 1"x7"x10" Plate shall not be removed until Stage II Construction forms and all reinforcement bars are in place and the concrete is ready to be placed.



1" x 7" x 10"
* Required only with Detail II

DESIGNED	S.CHELBIAN
CHECKED	J.GRAINAWI
DRAWN	S.CHELBIAN
CHECKED	J.GRAINAWI

Date: 6/30/2006

TEMPORARY CONCRETE BARRIER
I-55 OVER MINK CREEK
FAI ROUTE 55-SEC. 2006-032 BY
WILL COUNTY
STA. 630+07.11
STRUCTURE NO. 099-4615 (NB)
STRUCTURE NO. 099-4616 (SB)



6/30/2006 3:50:33 PM C:\10817\AS\Struct\CAD\IPe-Final\MINK CREEK\Final Bridge Contract\2006-032-00-00-013.dgn