

STATE OF ILLINOIS
DEPARTMENT OF TRANSPORTATION

ROUTE NO.	SECTION	COUNTY	STATE	SHEET	SHEET NO. 4 5 SHEETS
FAI 55	**	WILL	505	398	
FED. ROAD DIST. NO. 7	ILLINOIS	FED. AID PROJECT-			

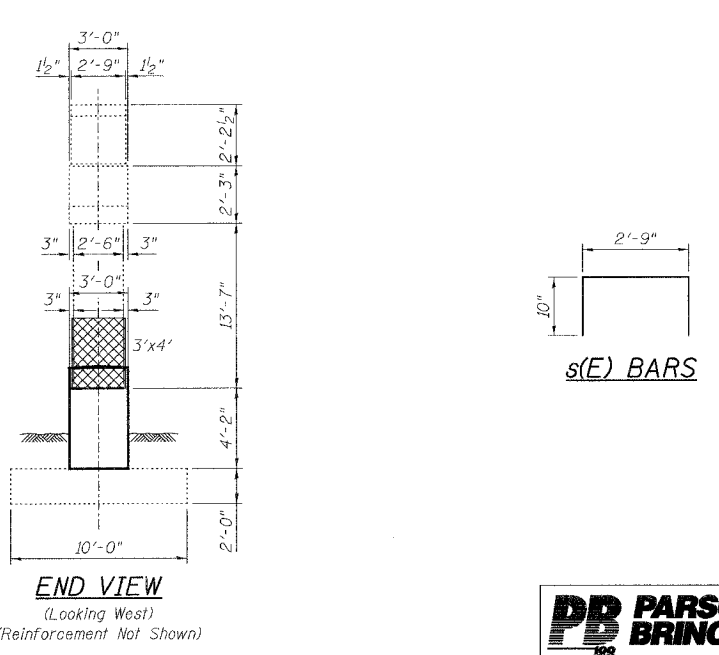
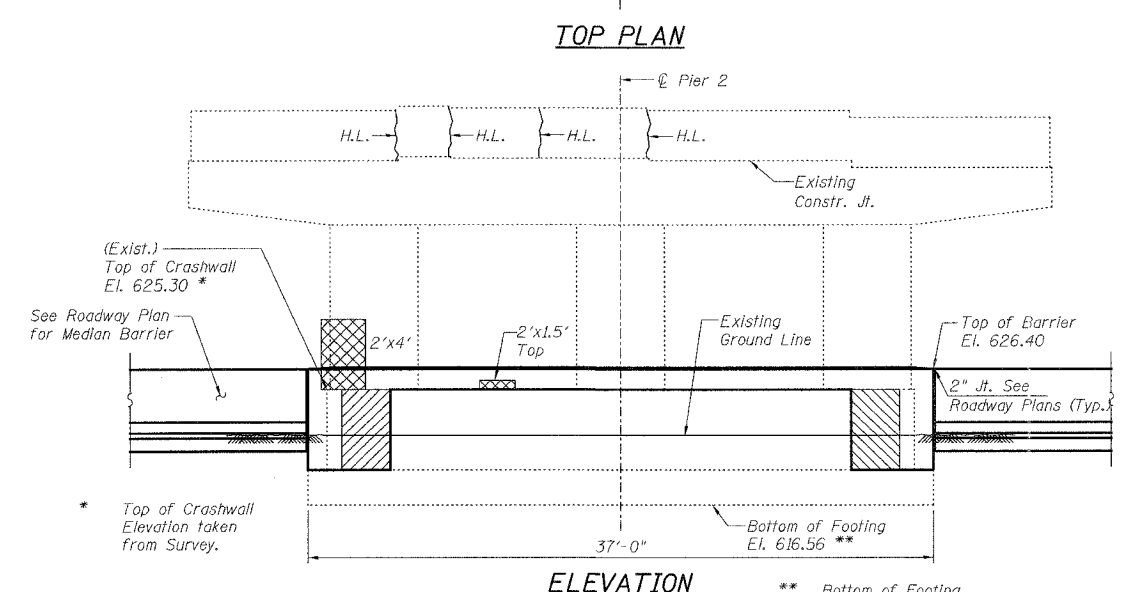
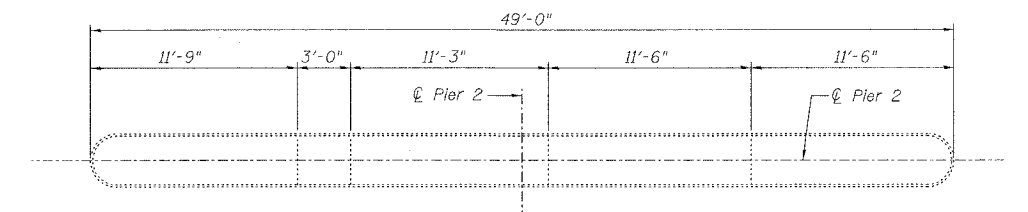
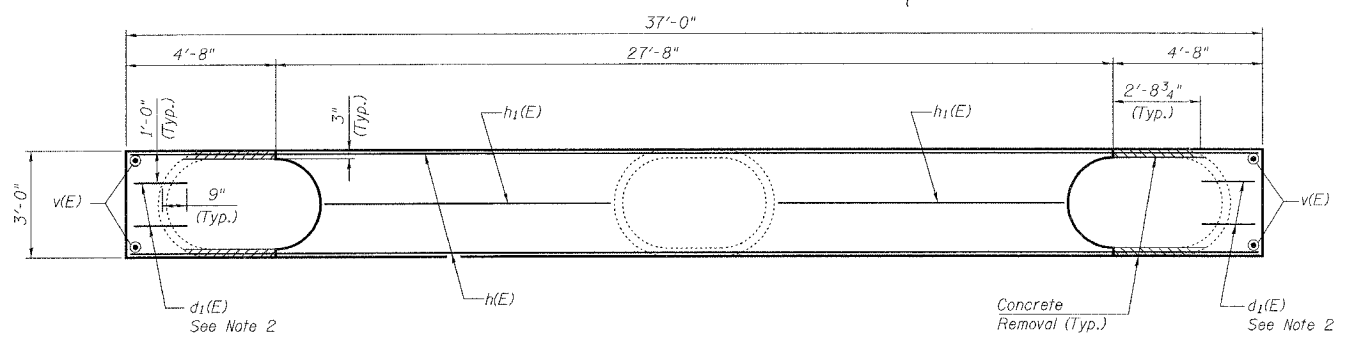
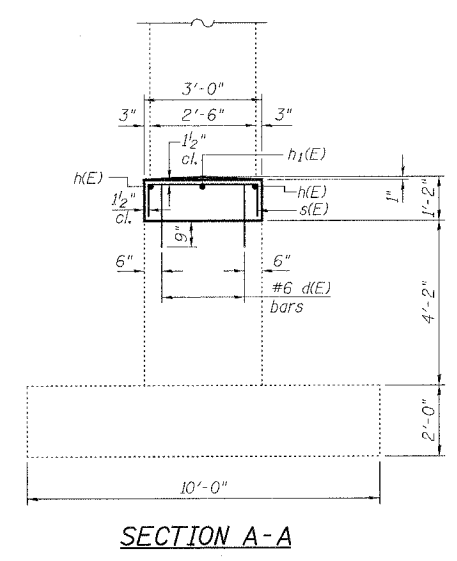
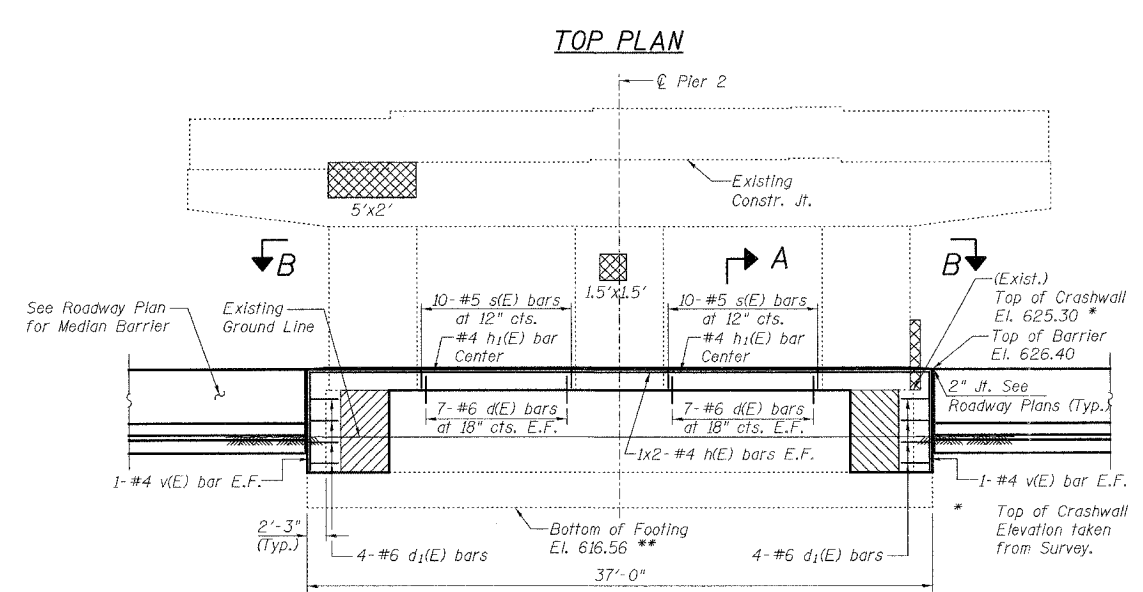
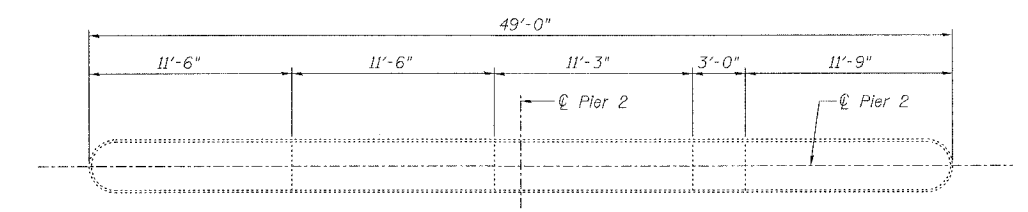
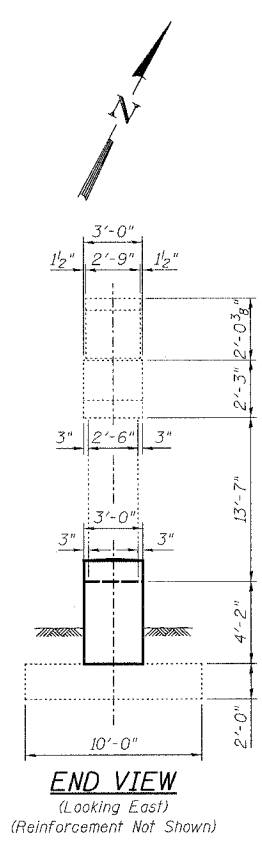
** SECTION 2006-032 BY
CONTRACT NO. 60886

Notes:

1. Reinforcement designated "(E)" shall be epoxy coated.
2. Drill and grout #6 d(E) & #6 d₁(E) in 9" min. drilled holes according to Section 584 of the Standard Specifications Method and grout are subject to the approval of the Engineer. Cost included with Reinforcement Bars, Epoxy Coated.
3. Existing reinforcement extending into the removal area shall be cleaned, straightened, and incorporated into the new construction. Any reinforcement bars that are damaged during concrete removal shall be replaced with an approved bar splicer or anchorage system. Cost shall be included with Concrete Removal.
4. Bars indicated thus 1 x 2 - #4 etc. indicates 1 line of bars with 2 lengths per line.
5. Minimum lap shall be 1'-8" for #4 bars.

LEGEND

- Structural Repair of Concrete (Depth equal to or less than 5")
- Concrete Removal
- H.L. Hairline Crack - Not to be sealed



BILL OF MATERIAL

Bar	No.	Size	Length	Shape
d(E)	28	#6	1'-9"	—
d ₁ (E)	16	#6	2'-10"	—
h(E)	4	#4	19'-4"	—
h ₁ (E)	2	#4	8'-3"	—
v(E)	4	#4	5'-0"	—
s(E)	20	#5	4'-5"	—
Item	Unit	Total		
Concrete Structures	Cu. Yd.	4.4		
Concrete Removal	Cu. Yd.	0.5		
Reinforcing Bars, Epoxy Coated	Pound	310		
Structural Repair of Concrete (Depth Equal to or Less Than 5")	Sq. Ft.	35.3		

PIER 2 REPAIR DETAILS
IL. ROUTE 126 (RAMP B)
OVER FAI ROUTE 55 (I-55)
SECTION 2006-032 BY
WILL COUNTY
STA. 1780+77.43
STRUCTURE NO. 099-0031



DESIGNED	S.CHELBIAN
CHECKED	J.GRAINAWI
DRAWN	D.C.PATEL
CHECKED	J.GRAINAWI

Date: 7/21/2006

7/25/2006 2:13:23 PM G:\11887\AS\Struct\Cad\Pre-Final\US 126\Final Plans\062206-099-0031.dgn