

STATE OF ILLINOIS
DEPARTMENT OF TRANSPORTATION

ROUTE NO.	SECTION	COUNTY	POST MILES	SHEET
F.A.I. 55	2006-032 BY	WILL	505	400
FED. ROAD DIST. NO.		ILLINOIS	FED. AID PROJECT	
CONTRACT #: 60886				

SHEET NO. S-1
S-10 SHEETS

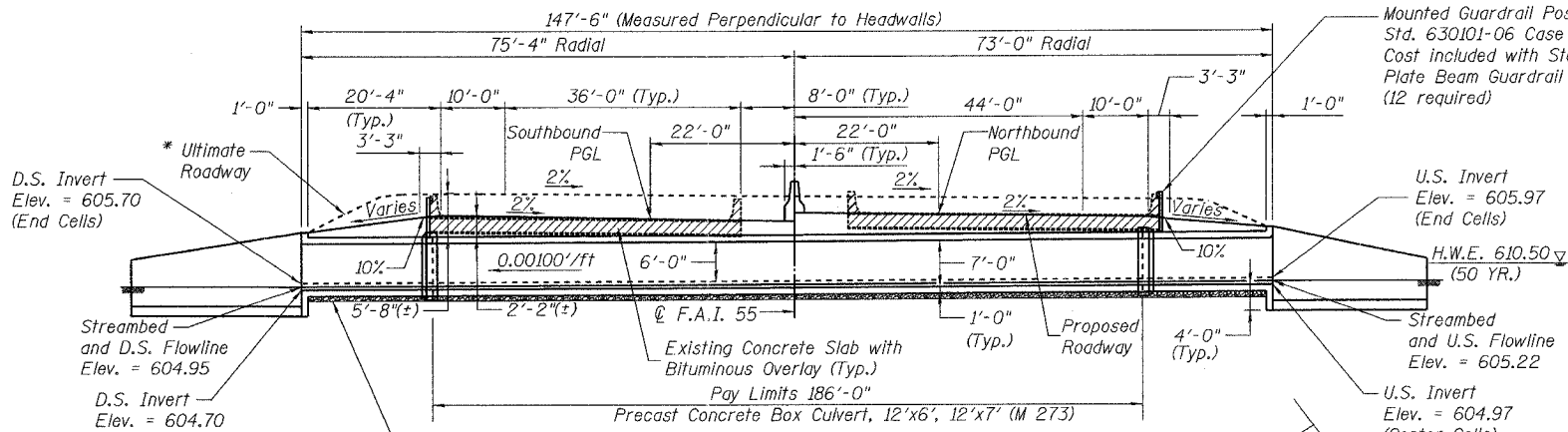
Benchmark: # 3245
Cut square on top of southwest abutment-wingwall
corner of southbound I-55 bridge SN 099-0025
Sta. 771+69.73, 55.51' LT
Elev. = 615.67

Benchmark: # 3246
Found square cut on top of southeast corner of
abutment-wingwall of northbound I-55 bridge
SN 099-0024
Sta. 773+18.43, 54.59' RT
Elev. = 615.57

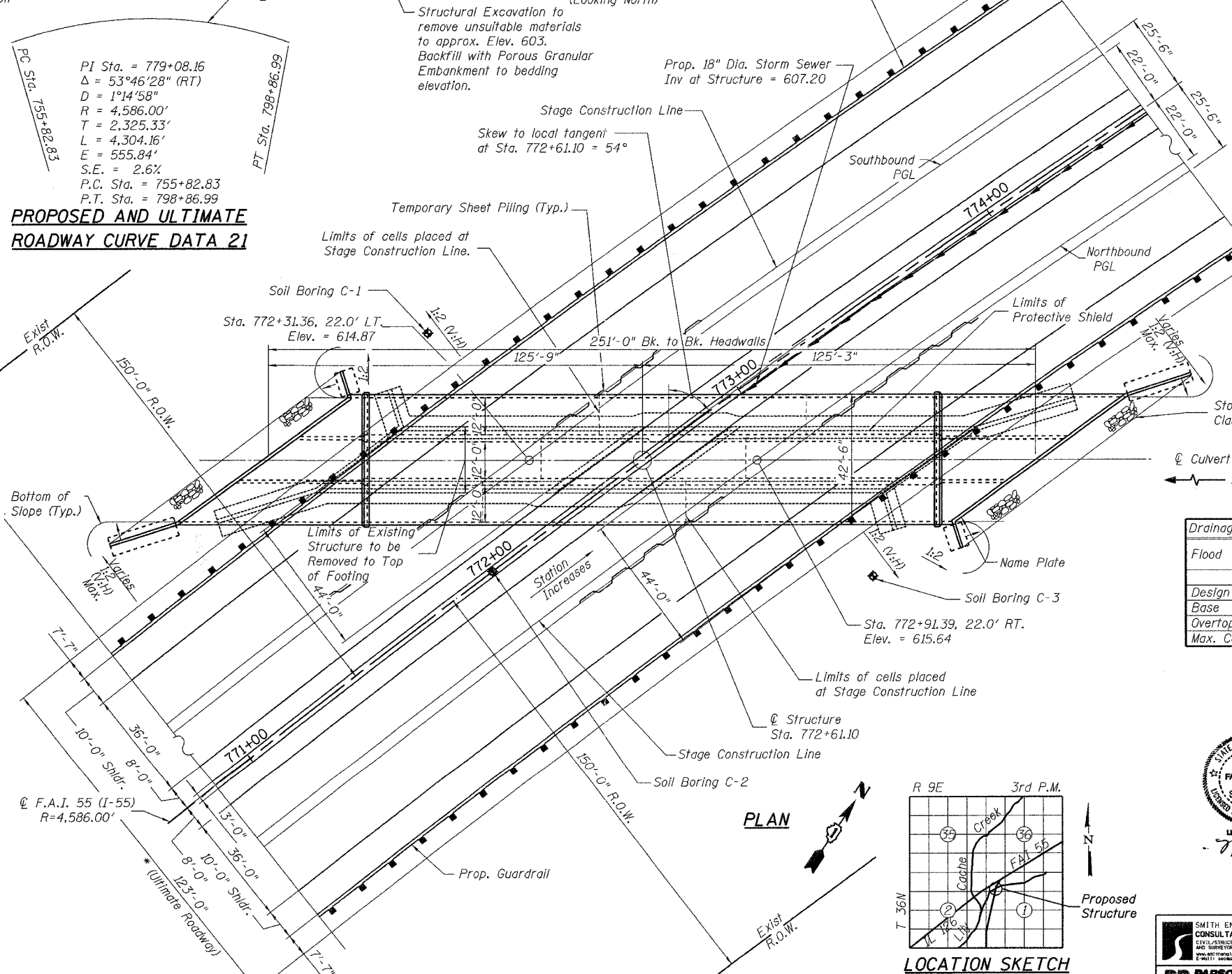
Existing Structures:
SN 099-0024 Northbound Structure
SN 099-0025 Southbound Structure
Built originally in 1956 as single span
deck slab structures. The structures were
rehabilitated in 1975 and 1995. The structures
are 36'-7" long with a clear width of 34'-0 1/2"
measured parallel to the roadway centerline.

No Salvage

Staging:
Two lanes of traffic shall be maintained in each
direction utilizing staged construction.

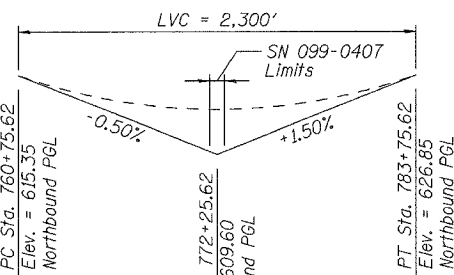


LONGITUDINAL SECTION
(Looking North)

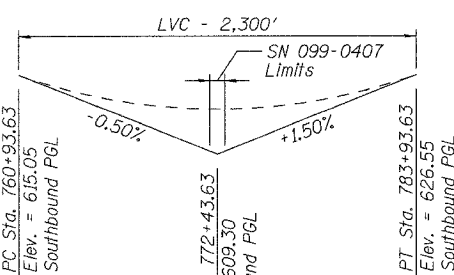


**PROPOSED AND ULTIMATE
ROADWAY CURVE DATA 21**

PC Sta. = 779+08.16
Δ = 53°46'28" (RT)
D = 1°14'58"
R = 4,586.00'
T = 2,325.33'
L = 4,304.16'
E = 555.84'
S.E. = 2.6%
P.C. Sta. = 755+82.83
P.T. Sta. = 798+86.99



PROFILE GRADE I-55
(Northbound)



PROFILE GRADE I-55
(Southbound)

LOADING HS20-44 & ALTERNATE

Allow 50#/sq. ft. for future wearing surface.

DESIGN SPECIFICATIONS

2002 AASHTO

DESIGN STRESSES

FIELD UNITS

f'c = 3,500 psi
fy = 60,000 psi (Reinforcement Bars)

PRECAST UNITS

f'c = 5,000 psi
fy = 65,000 psi (Welded Wire Fabric)

* Ultimate profile is a future condition
accommodated in design. The ultimate
profile is not a part of this contract.

WATERWAY INFORMATION

Drainage Area = 6.2 Sq Mi Exist. & Prop. Low Grade Elev. 614.08 @ Sta. 767+41.70

Flood	Freq. Yr.	Q C.F.S.	Opening Sq. Ft.		Head - Ft.		Headwater El.		
			Exist.	Prop.	Exist.	Prop.	Exist.	Prop.	
Design	10	393	71.50	116.40	609.30	2.00	0.32	611.30	609.62
Base	50	513	94.30	159.60	610.50	1.62	0.24	612.12	610.74
Overtopping	100	769	100.00	170.00	610.80	2.26	0.50	613.06	611.30
Max. Calc.	500	1080	119.00	206.40	611.80	1.56	0.64	613.36	612.44

APPROVED
FOR STRUCTURAL ADEQUACY ONLY

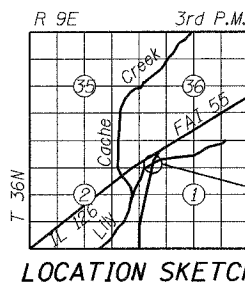
Rafiq E. Anderson
ENGINEER OF BRIDGES AND STRUCTURES



LIC. EXP. 11-05-06
N. Farroodin
6-28-06

DESIGNED	M Herding
CHECKED	N Fekroddin
DRAWN	M Williams
CHECKED	N Fekroddin

PLAN



REVISIONS	
NAME	DATE

ILLINOIS DEPARTMENT OF TRANSPORTATION
GENERAL PLAN AND ELEVATION
I-55 OVER
LILY CACHE SLOUGH
F.A.I. ROUTE 55 SECTION 2006-032 BY
WILL COUNTY
STA. 772+61.10
SN 099-0407
DATE 07-05-2006