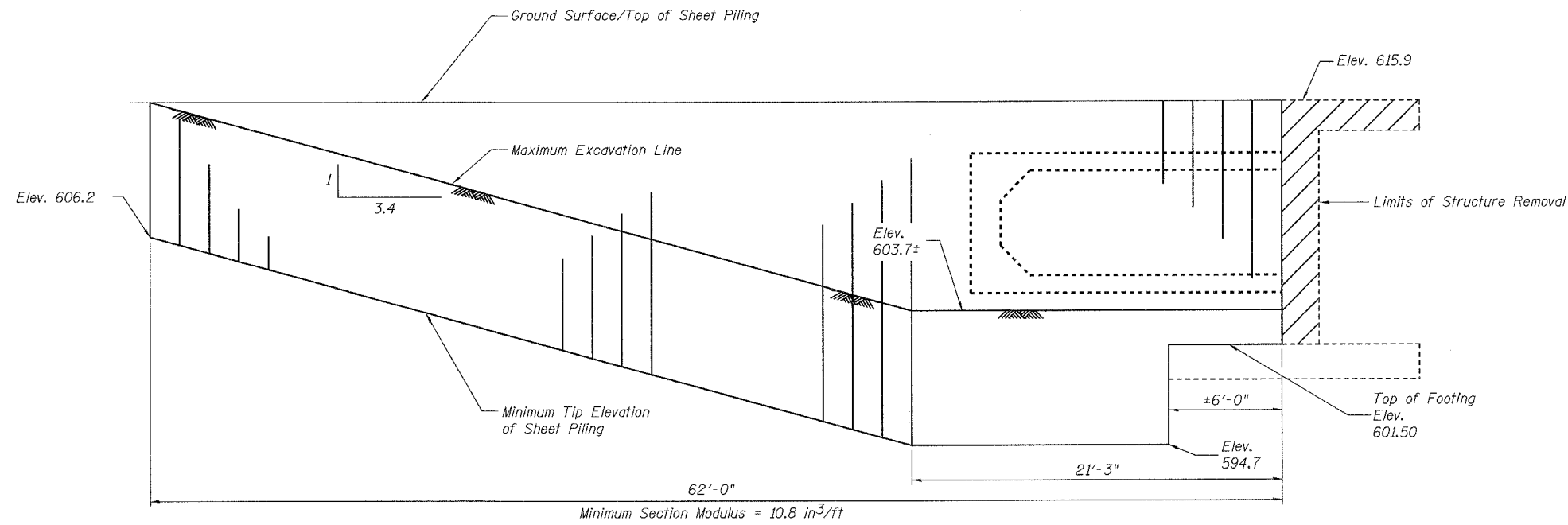


STATE OF ILLINOIS  
DEPARTMENT OF TRANSPORTATION

ROUTE NO.	SECTION	COUNTY	TOTAL SHEETS	SHEET NO.
F.A.I. 55	2006-032 BY	WILL	505	404
FED. ROAD DIST. NO.		BILLINGS	FED. AID PROJECT-	
CONTRACT #: 60886				

SHEET NO. S-5  
S-10 SHEETS



**LEGEND**

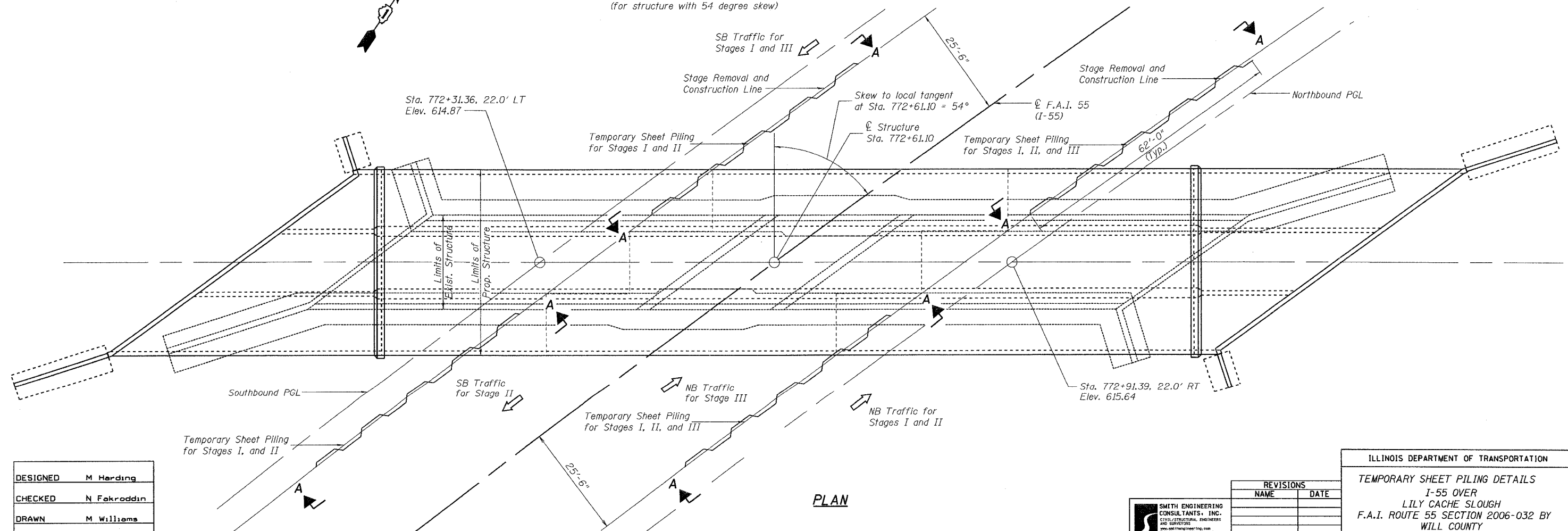
Indicates portions of Existing Structure to be removed

**NOTES**

Work this sheet with sheets S-3 and S-4.

**SECTION A-A**

Slopes and Distances shown along Alignment of Sheet piling  
(for structure with 54 degree skew)



**PLAN**

DESIGNED	M Harding
CHECKED	N Fekroddin
DRAWN	M Williams
CHECKED	N Fekroddin



REVISIONS	
NAME	DATE

ILLINOIS DEPARTMENT OF TRANSPORTATION  
TEMPORARY SHEET PILING DETAILS  
I-55 OVER  
LILY CACHE SLOUGH  
F.A.I. ROUTE 55 SECTION 2006-032 BY  
WILL COUNTY  
STA. 772+61.10  
SN 099-0407  
DATE 07-05-2006