

STATE OF ILLINOIS  
DEPARTMENT OF TRANSPORTATION

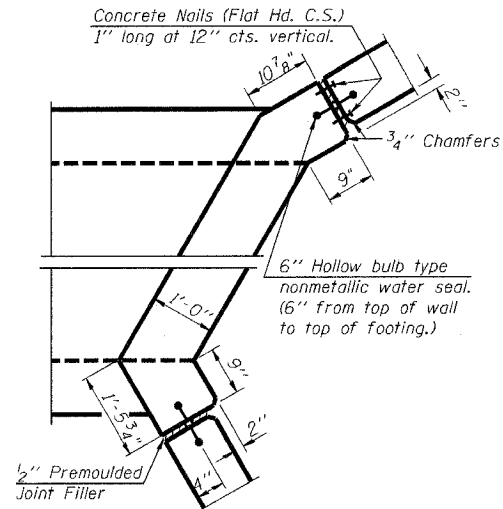
ROUTE NO.	SECTION	COUNTY	TOTAL SHEETS	SHEET NO.
F.A.I. 55	2006-032 BY	WILL	505	407
FED. ROAD DIST. NO.		ILL. PROJ. NO.	FED. AID PROJECT NO.	

SHEET NO. S-8  
S-10 SHEETS

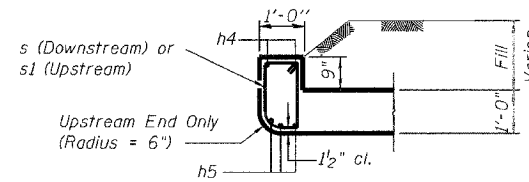
CONTRACT #: 60886

**NOTES**

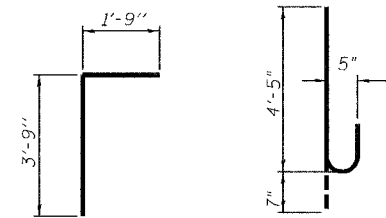
Reinforcement Bars shall conform to the requirements of AASHTO M 31 or M 322, Grade 60.  
Bars indicated thus 12 x 4-#5 etc. indicates 12 lines of bars with 4 lengths per line.  
Reinforcement bars designated (E) shall be epoxy coated.  
All construction joints shall be bonded.  
All material shown on this sheet shall be included under the Pay Item: BOX CULVERT END SECTIONS.  
Work this sheet with sheets S-6 and S-7.



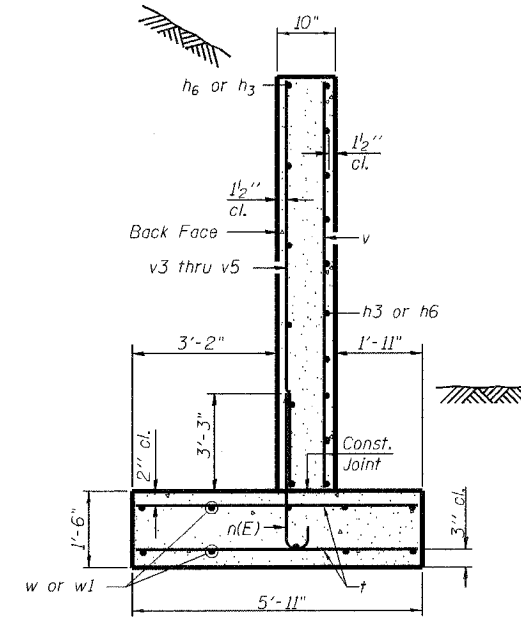
**CORNER DETAIL**



**SECTION E-E**

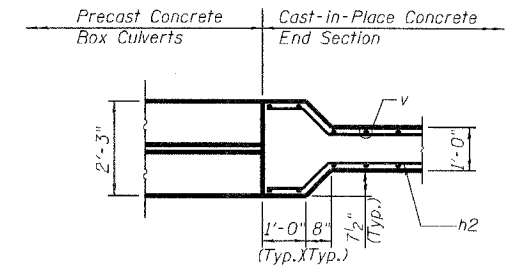


**BAR d**      **BAR n(E)**

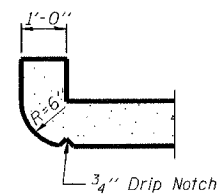


**SECTION C-C**

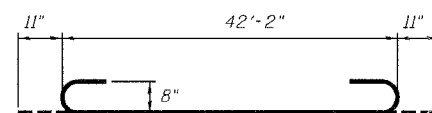
Max. Soil Pressure under footing = 2,500 psf



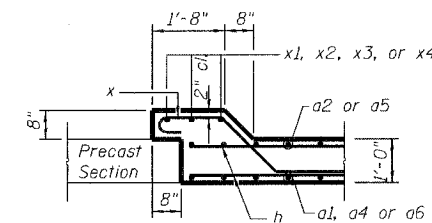
**DETAIL 1**



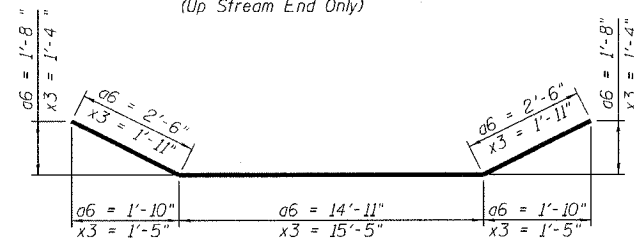
**SECTION THRU HEADWALL**  
(Up Stream End Only)



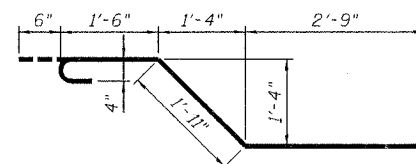
**BAR a1**



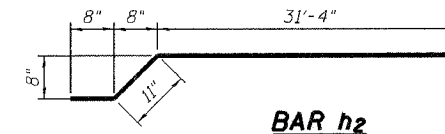
**SECTION D-D**



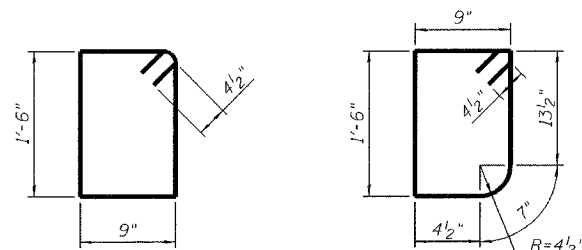
**BAR a6 AND x3**



**BAR x**

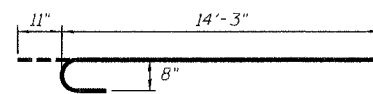


**BAR h2**

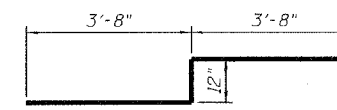


**BAR s**  
(Downstream)

**BAR s1**  
(Upstream)



**BAR a3**



**BAR z**

**BILL OF MATERIAL**

Bar	No.	Size	Length	Shape
a1	120	# 8	44'-0"	U
a2	120	# 8	42'-2"	U
a3	240	# 8	15'-2"	U
a4	240	# 8	14'-3"	U
a5	120	# 8	13'-3"	U
a6	120	# 8	19'-11"	U
a7	4	# 4	35'-8"	U
d	158	# 4	5'-6"	U
h	228	# 7	32'-3"	U
h2	192	# 7	32'-11"	U
h3	34	# 4	7'-8"	U
h4	12	# 6	15'-6"	U
h5	36	# 8	16'-6"	U
h6	34	# 4	22'-8"	U
n(E)	74	# 5	5'-0"	U
s	69	# 4	5'-3"	U
s1	69	# 4	5'-1"	U
t	60	# 5	5'-7"	U
v	600	# 4	6'-2"	U
v1	450	# 4	3'-11"	U
v2	8	# 4	11'-5"	U
v3	34	# 4	6'-7"	U
v4	40	# 4	8'-8"	U
v5	18	# 4	9'-11"	U
w	20	# 5	22'-8"	U
w1	20	# 5	7'-8"	U
x	104	# 4	6'-8"	U
x1	18	# 4	14'-0"	U
x2	12	# 4	14'-7"	U
x3	6	# 4	19'-3"	U
x4	12	# 4	9'-0"	U
z	240	# 8	8'-4"	U
Item	Unit	Quantity		
Box Culvert End Sections	Each	2		

DESIGNED	M Harding
CHECKED	N Fakroddin
DRAWN	M Williams
CHECKED	N Fakroddin



REVISIONS	
NAME	DATE

ILLINOIS DEPARTMENT OF TRANSPORTATION  
END SECTION AND HEADWALL DETAILS  
I-55 OVER  
LILY CACHE SLOUGH  
F.A.I. ROUTE 55 SECTION 2006-032 BY  
WILL COUNTY  
STA. 772+61.10  
SN 099-0407  
DATE 07-21-2006