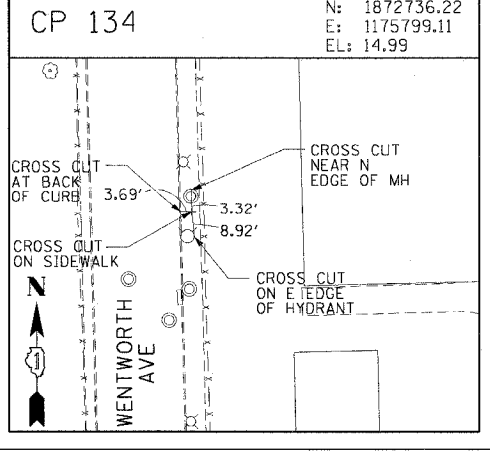
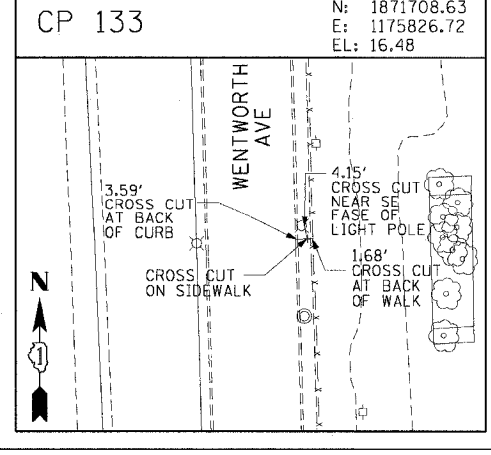
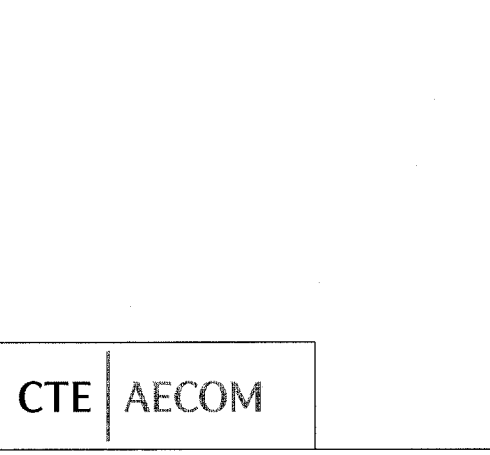
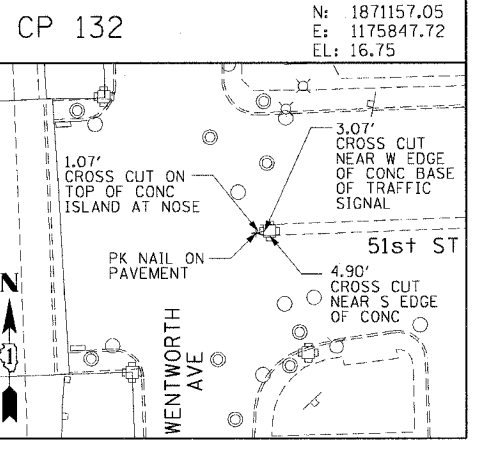
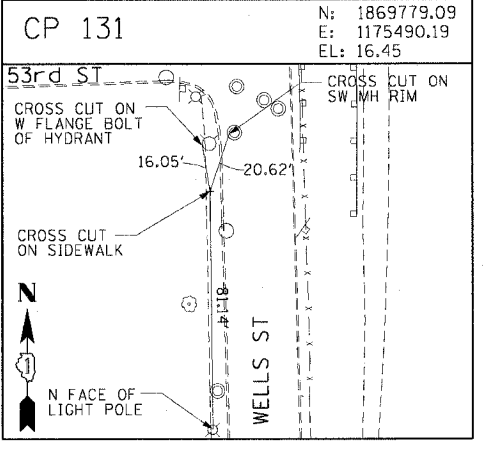
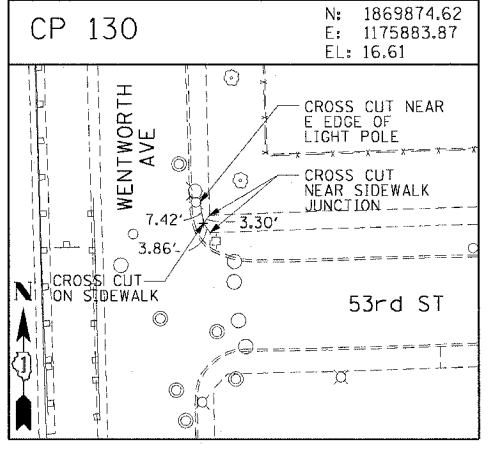
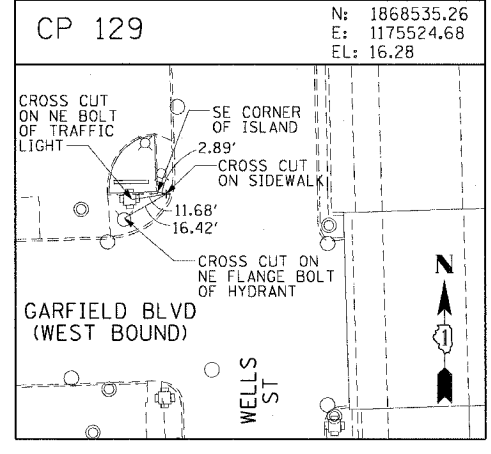
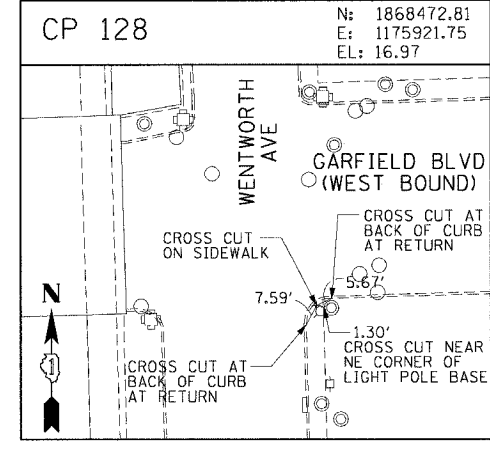
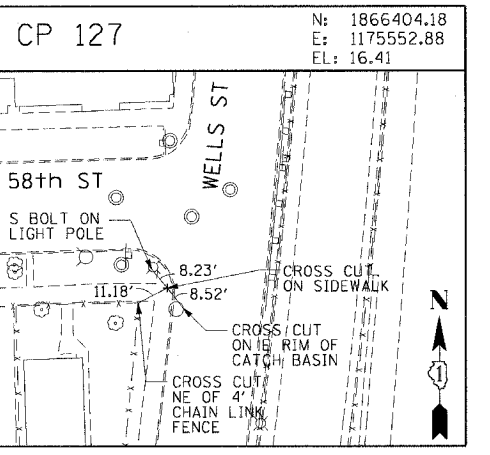
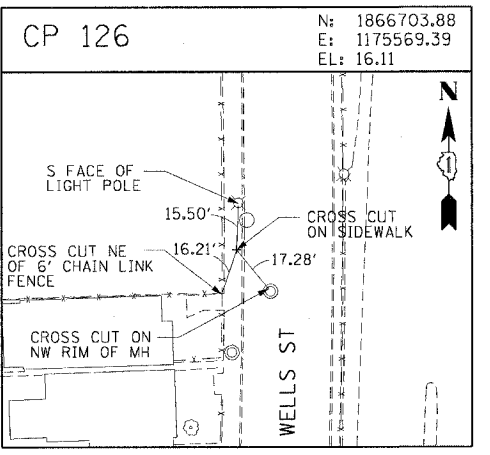
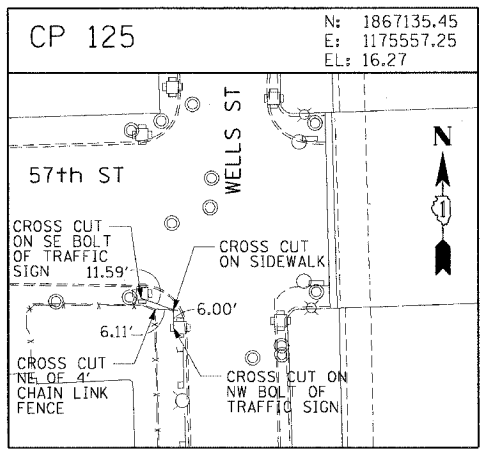
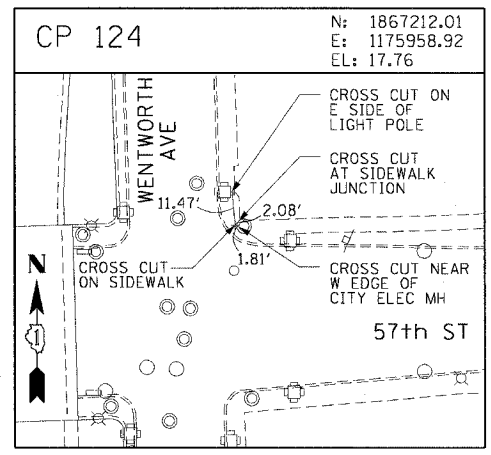
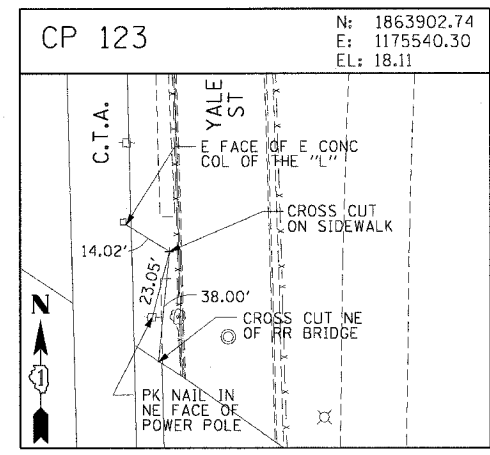
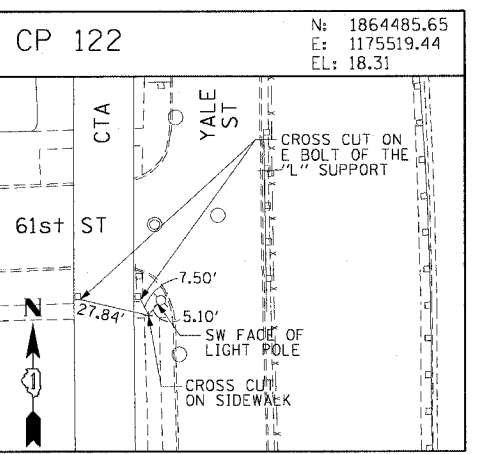
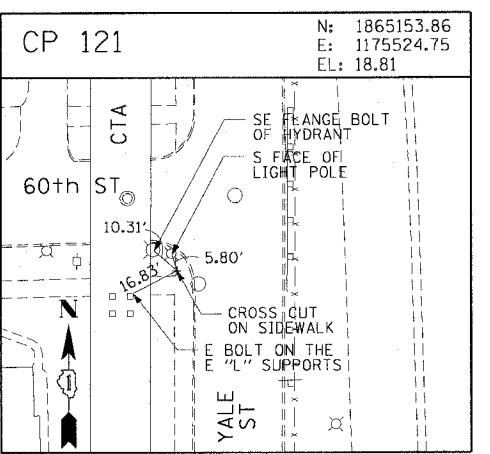
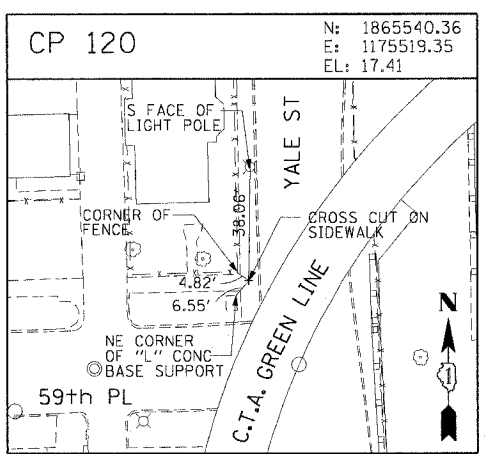
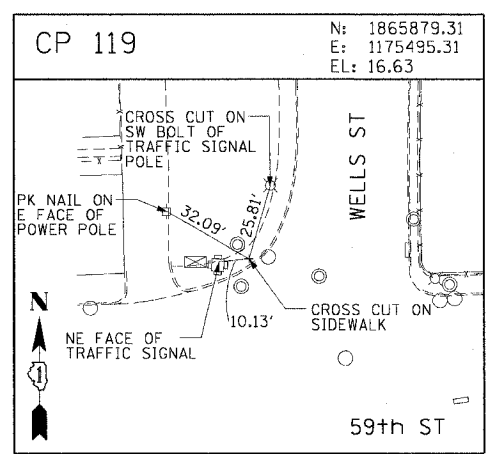
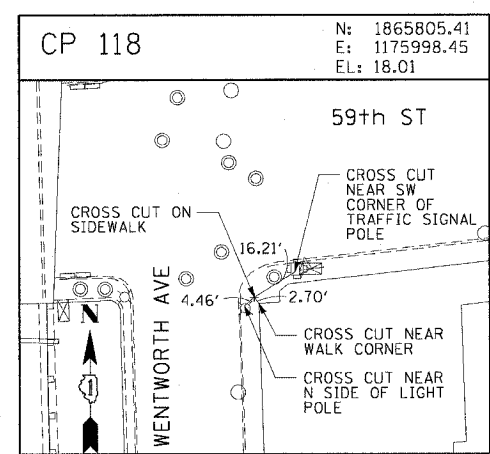


F.A.I. RTE.	SECTION	COUNTY	TOTAL SHEETS	SHEET NO.
90/94		COOK	565	47
STA. TO STA.				
FED. ROAD DIST. NO. 1 ILLINOIS FED. AID PROJECT				
62301 • (2021-922 PT2 ETC 2324.6-IP) R-10				



CTE | AECOM

REVISIONS	
NAME	DATE

ALT-13
 ILLINOIS DEPARTMENT OF TRANSPORTATION
 F.A.I. 90/94 (DAN RYAN EXPRESSWAY)
 GARFIELD BLVD TO 31ST STREET (NB LOCAL LANES)
 SURVEY TIES AND CONTROL POINTS
 SCALE: 1"=30'
 DATE: June 9, 2006
 DRAWN BY: MRK
 CHECKED BY: JAL

6/7/2006 1:46:04 PM I:\GIS\Projects\18 & 19\GIS\Drawings\18\18022a.dwg