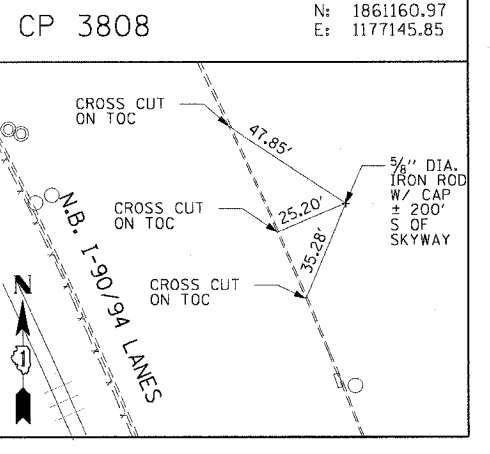
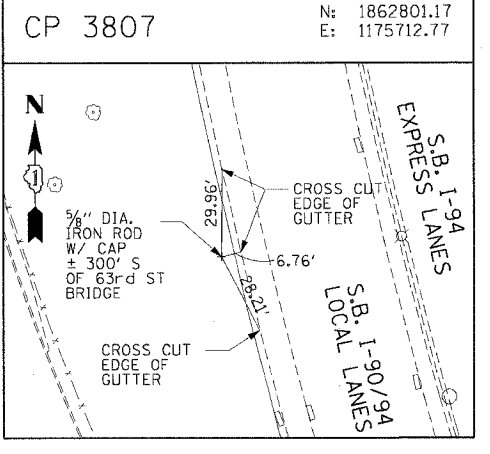
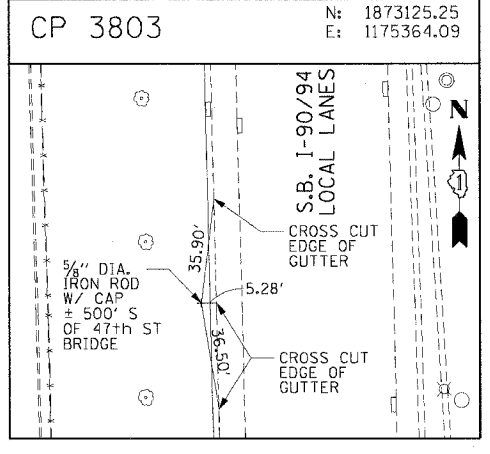
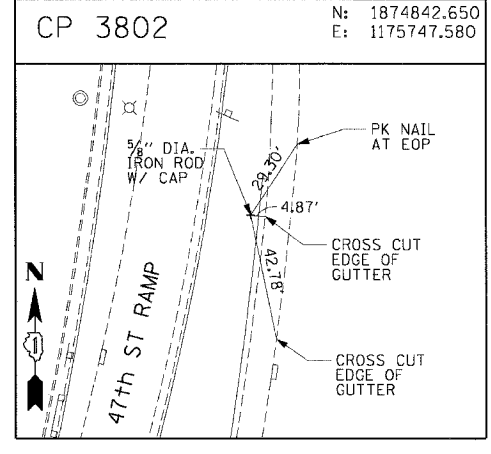
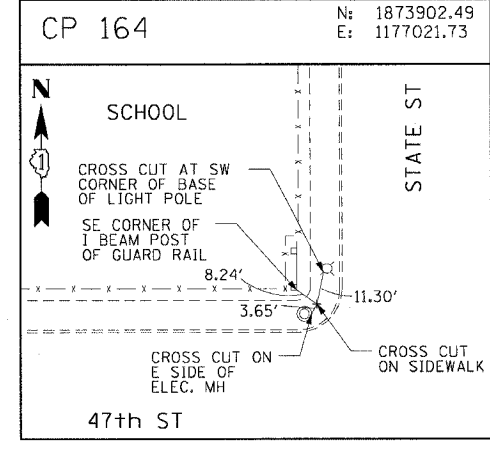
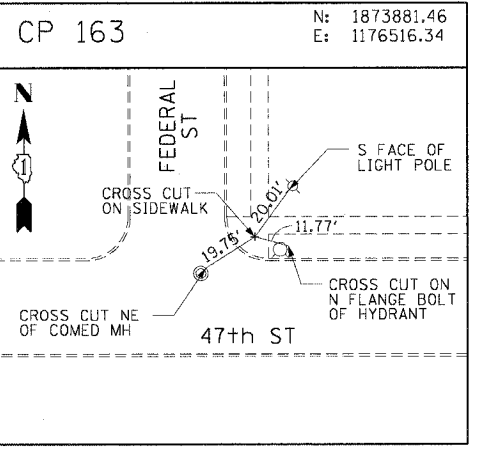
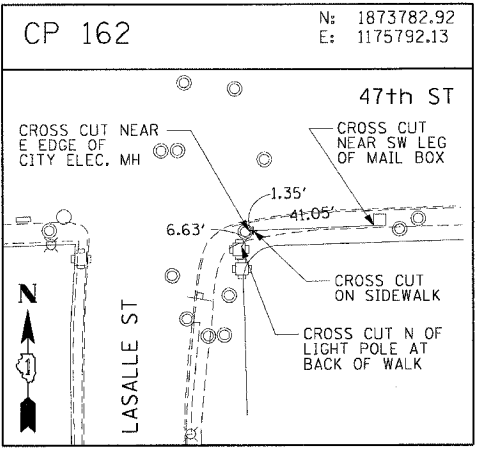
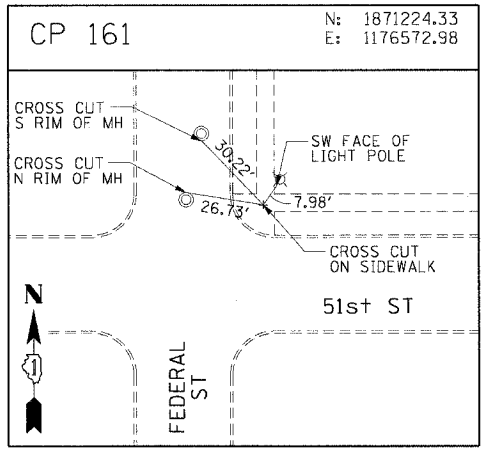
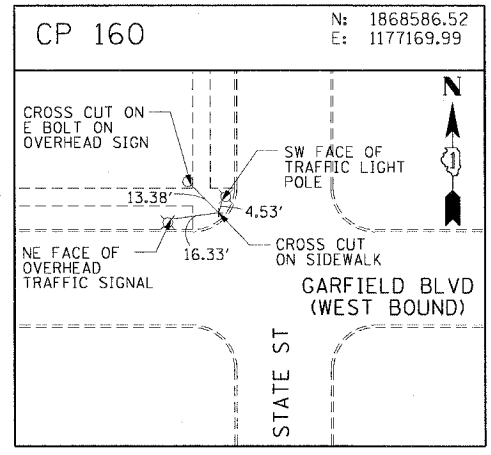
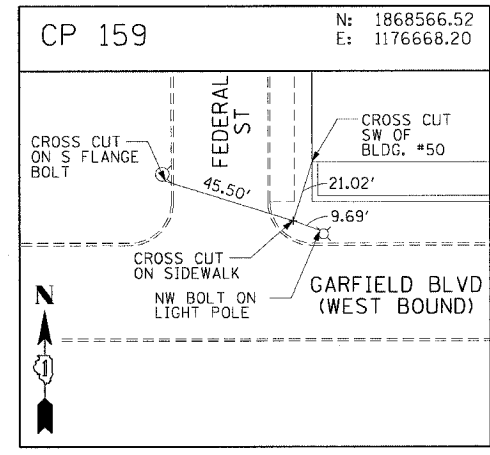
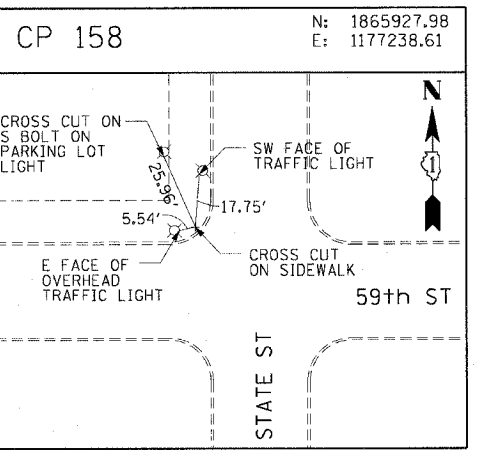
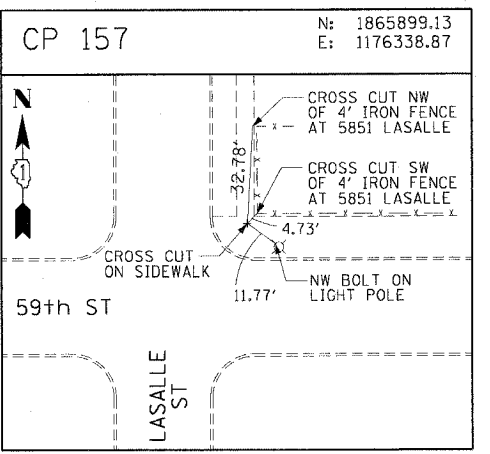
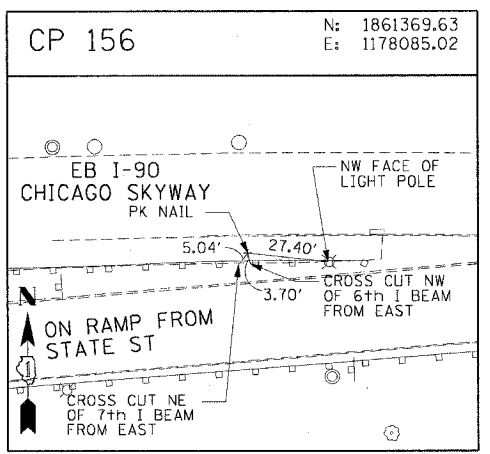
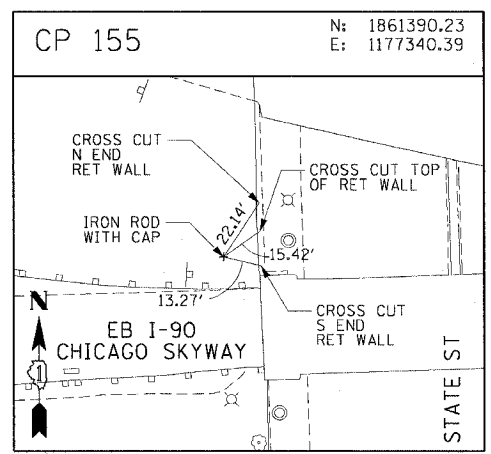
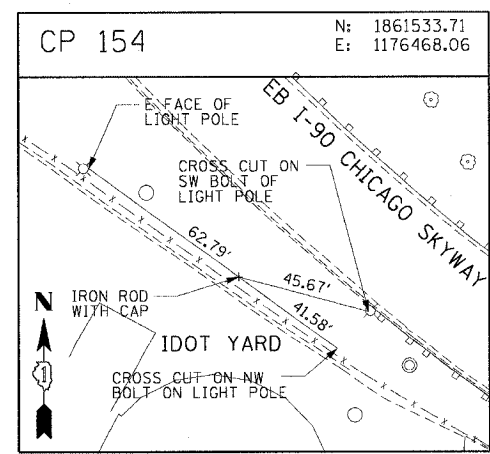


F.A.I. RTE.	SECTION	COUNTY	TOTAL SHEETS	SHEET NO.
90/94		COOK	565	49
STA.		TO STA.		
FED. ROAD DIST. NO. 1		ILLINOIS FED. AID PROJECT		
62301		(2021-922 PT2 ETC 2324.6-1P) R-10		



REVISIONS	
NAME	DATE

ALT-15
 ILLINOIS DEPARTMENT OF TRANSPORTATION
 F.A.I. 90/94 (DAN RYAN EXPRESSWAY)
 GARFIELD BLVD TO 31ST STREET (NB LOCAL LANES)
 SURVEY TIES AND CONTROL POINTS
 SCALE: 1"=30'
 DATE: June 9, 2006
 DRAWN BY: MRK
 CHECKED BY: JAL

P:\040468\CHN\CHN-cvts 18 & 19\stn\cvt 18\alignment\181042.dwg
 6/7/2006 1:46:06 PM