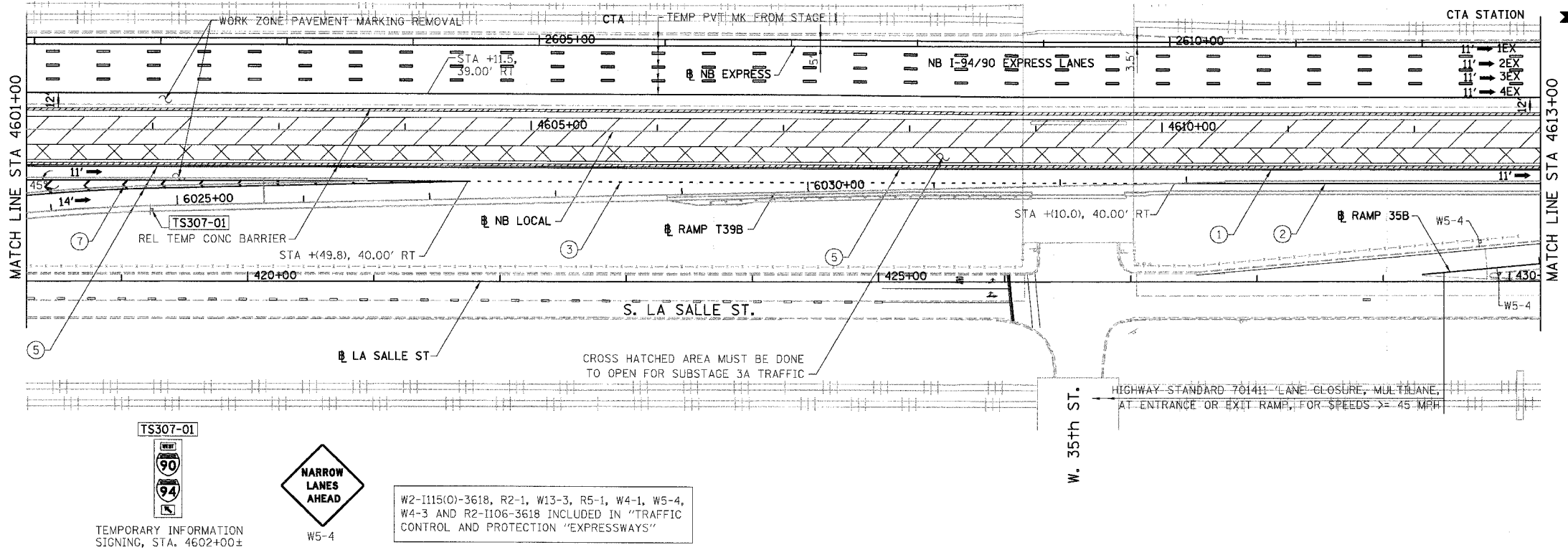
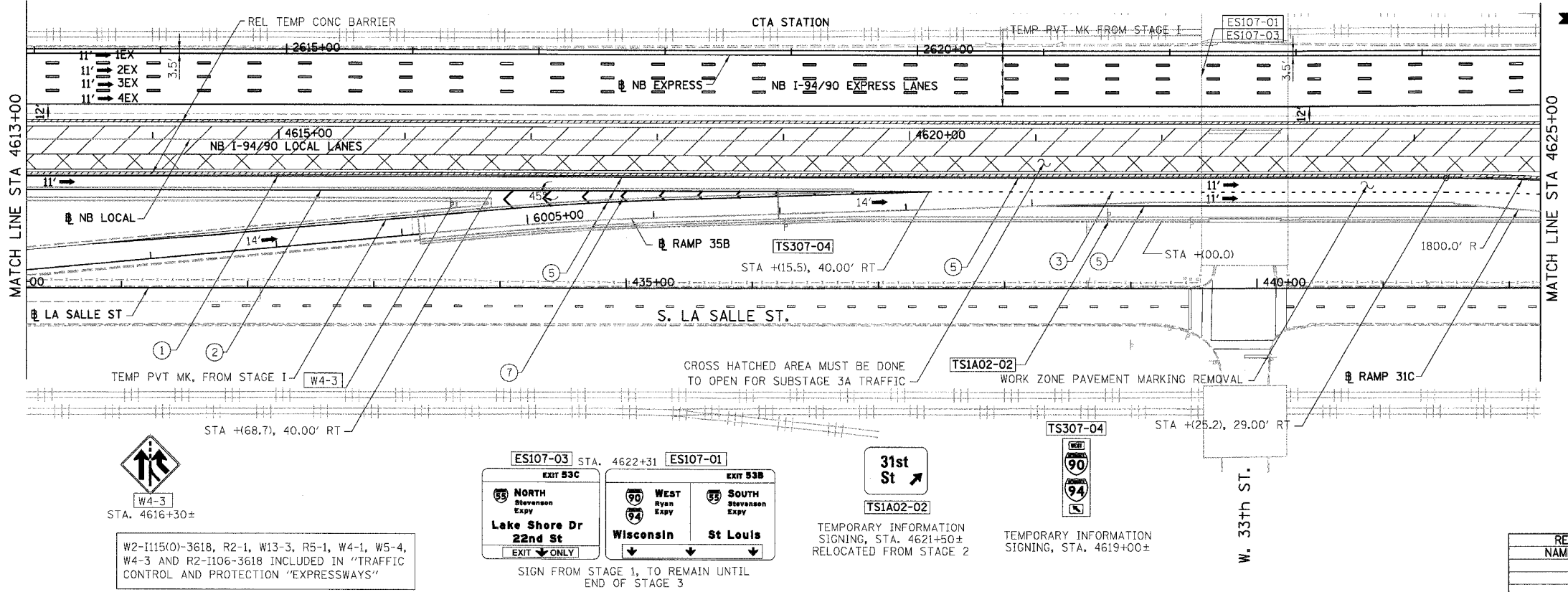


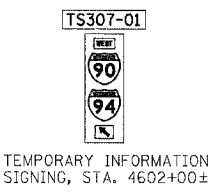
F.A.I.	SECTION	COUNTY	TOTAL SHEETS	SHEET NO.
94/90		COOK	565	107
STA.	TO STA.			
FED. ROAD DIST. NO.	ILLINOIS	FED. AID PROJECT		
62301	*(2021-922 PT2 ETC 2324.6-1P) R-10			



- LEGEND:**
- 1 → LANE NUMBER AND DIRECTION OF TRAFFIC
 - ▨ WORK AREA
 - ▨ TEMPORARY PAVEMENT
 - ∞ IMPACT ATTENUATORS, TEMPORARY (NON-REDIRECTIVE), TEST LEVEL 3
 - DRUM OR BARRICADE TYPE II WITH STEADY BURNING LIGHT
 - ⊥ BARRICADE TYPE III
 - ▨ TEMPORARY CONCRETE BARRIER
 - ① LINE 4" (YELLOW EDGE)
 - ② LINE 4" (WHITE EDGE)
 - ③ LINE 4" (SKIP DASH, 6' SKIP - 2' DASH, WHITE)
 - ④ LINE 5" (SKIP DASH, 30' SKIP - 10' DASH, WHITE)
 - ⑤ LINE 8" (WHITE GORE LINE)
 - ⑥ LINE 8" (SKIP DASH, 12' SKIP - 3' DASH, WHITE)
 - ⑦ LINE 12" (DIAGONAL, 30' C-C, WHITE)
 - ⑧ LETTERS AND SYMBOLS
 - ES-XXX-XX EXISTING OVERHEAD OR CANTILEVER SIGNS
 - GS-XXX-XX EXISTING POST MOUNTED SIGNS
 - TS-XXX-XX TEMPORARY SIGNS
- +XX.XX STATION PROVIDED FROM THE ± SB I-90/94 EXPRESS LANES
+XX.XX STATION PROVIDED FROM THE ± SB I-90/94 LOCAL LANES



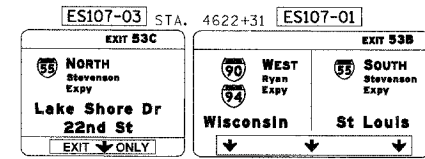
- NOTES:**
- SEE SHEET MOTTS-01 FOR TYPICAL SECTIONS.
 - SEE TEMPORARY SIGN PANEL SHEETS FOR DETAILS.
- 0 50' 100'
- MOT-307
- | REVISIONS | |
|-----------|------|
| NAME | DATE |
| | |
| | |
| | |
| | |
| | |
- ILLINOIS DEPARTMENT OF TRANSPORTATION
F.A.I. 94/90 (DAN RYAN EXPRESSWAY)
GARFIELD BLVD TO 31ST STREET (NB LOCAL LANES)
SUGGESTED STAGES OF CONSTRUCTION AND TRAFFIC CONTROL
STAGE 3
- SCALE: 1"=50'
DATE: 06/09/06
DRAWN BY: RA
CHECKED BY: RS



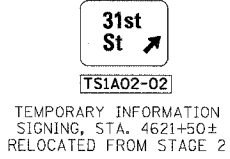
W2-I115(O)-3618, R2-1, W13-3, R5-1, W4-1, W5-4, W4-3 AND R2-I106-3618 INCLUDED IN "TRAFFIC CONTROL AND PROTECTION "EXPRESSWAYS"



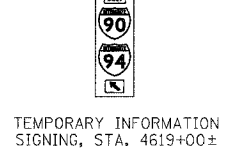
W2-I115(O)-3618, R2-1, W13-3, R5-1, W4-1, W5-4, W4-3 AND R2-I106-3618 INCLUDED IN "TRAFFIC CONTROL AND PROTECTION "EXPRESSWAYS"



SIGN FROM STAGE 1, TO REMAIN UNTIL END OF STAGE 3



TEMPORARY INFORMATION SIGNING, STA. 4621+50± RELOCATED FROM STAGE 2



TEMPORARY INFORMATION SIGNING, STA. 4619+00±

BOWMAN, BARRETT & ASSOCIATES INC.
CONSULTING ENGINEERS
Chicago, Illinois
312.228.0100
www.bbainc.com

NB I-94/90 EXPRESS LANES TEMPORARY PAVEMENT MARKINGS WERE INSTALLED IN STAGES I, 2 AND SUBSTAGE IA, UNLESS OTHERWISE SPECIFIED IN STAGE 3. CROSS OVER RAMPS, TEMPORARY PAVEMENT MARKINGS INSTALLED IN STAGE 2 TO REMAIN TO END OF SUBSTAGE 3A, UNLESS OTHERWISE SPECIFIED IN STAGE 3.