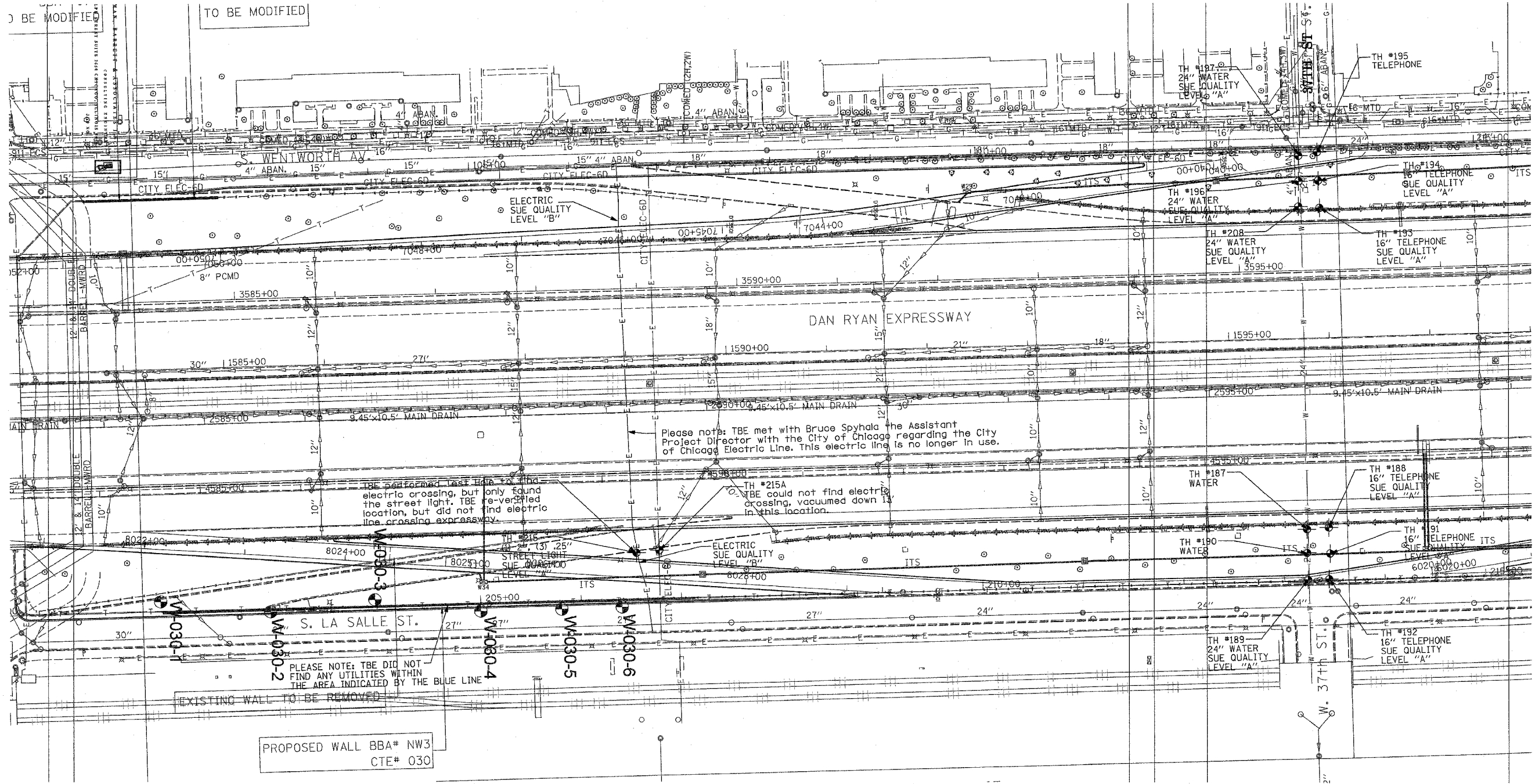


F.A. RTE.	SECTION	COUNTY	TOTAL SHEETS	SHEET NO.
90/94		Cook	565	197
STA.		TO STA.		
FED. ROAD DIST. NO.		ILLINOIS FED. AID PROJECT		



Please note: TBE met with Bruce Spychala the Assistant Project Director with the City of Chicago regarding the City of Chicago Electric Line. This electric line is no longer in use.

The performed last hole to find electric crossing, but only found the street light. TBE re-verified location, but did not find electric line crossing expressway.

TH #215A TBE could not find electric crossing, vacuumed down 13' in this location.

PLEASE NOTE: TBE DID NOT FIND ANY UTILITIES WITHIN THE AREA INDICATED BY THE BLUE LINE

EXISTING WALL TO BE REMOVED

PROPOSED WALL BBA# NW3 CTE# 030



**TBE GROUP, INC.**  
 CIVIL ENGINEERING \* TRANSPORTATION \* ENVIRONMENTAL  
 \* PLANNING \* UTILITY ENGINEERING/LOCATING  
 SOUTHERN REGION: FL, GA, SC, NC  
 NORTHERN REGION: IL, IN, MI, OH, MD, NJ, NY  
 PA, VA, CANADA  
 WESTERN REGION: AZ, NV, NM, TX, CA, OR, UT, WA

IL09500164, 167, 168, 170, 171, 179, 180, 182, 204,  
 205, 206, 211, 212, 219, 221, 225, 226, 227, 228, 230, 232  
 TBE SUE PAGE NO: 33 of 36  
 Checked by: *[Signature]*  
 SUE Quality Level "A" : Test Holes  
 SUE Quality Level "B" : Designating

—TS—	—TS—	TRAFFIC SIGNAL
—SL—	—SL—	STREET LIGHT
—COCE—	—COCE—	CITY OF CHICAGO ELECTRIC
—T—	—T—	TELEPHONE
—W—	—W—	WATER
—G—	—G—	GAS
—CTV—	—CTV—	CABLE TELEVISION
—FO—	—FO—	FIBER OPTIC
—E—	—E—	ELECTRIC
⊙	⊙	TEST HOLE

Utilities shown on these plans as depicted in the legend have been investigated by TBE Group, Inc in accordance with SUE Industry Standards. All other information shown has been provided to TBE Group, Inc by others.

205 W. WACKER DRIVE  
 SUITE 1020  
 CHICAGO, IL 60606  
 (312) 704-1970

TBE could not locate buried utilities directly beneath the expressway due to traffic and safety issues.

REVISIONS	
NAME	DATE

ILLINOIS DEPARTMENT OF TRANSPORTATION  
 SUE Investigation of Underground Utilities  
 I-90/I-94 Dan Ryan Expressway from  
 I-57 to 69th Street  
 Contract Number: 62590, 62592, 62594  
 SOL "A" DATE: 4/27/04  
 SOL "B" DATE: 7/22/04  
 DRAWN BY: KLC  
 SCALE: 1" = 50'