

F.A.I. RTE.	SECTION	COUNTY	TOTAL SHEETS	SHEET NO.
90/94		COOK	565	311
STA.	TO STA.			
FED. ROAD DIST. NO. 1	ILLINOIS	FED. AID PROJECT		
62301	• (2021-922 PT2 ETC 2324.6-1P) R-10			

ELECTRICAL SYMBOLS FOR PROPOSED WORK

LIGHT TOWER FOUNDATION
NUMBER INSIDE HEXAGON INDICATES TOWER TYPE
HANDHOLE LOCATION AS INDICATED
TOWER INSTALLED BY OTHERS,
UNDER A SEPARATE CONTRACT

TYPE	TOWER HEIGHT
10	100 FEET
11	110 FEET
12	120 FEET

LIGHT POLE FOUNDATION
POLE INSTALLED BY OTHERS
UNDER A SEPARATE CONTRACT

TEMPORARY LIGHTING UNIT INCLUDING 60 FOOT
WOOD POLE (CLASS 4), 8'-0" MAST ARM WITH
400 WATT HPS LUMINAIRE

ELECTRIC HANDHOLE: TYPE AS INDICATED
TYPE E1: PC CONCRETE, 21.5"x21.5"x30"
IDOT STANDARD 814001
TYPE E2: PC CONCRETE-HEAVY DUTY, 22"x22"x30",
IDOT STANDARD 814001
TYPE C1: COMMUNICATIONS VAULT
TYPE S1: PC CONCRETE-HEAVY DUTY, 22"x22"x36"
TYPE S2: PC CONCRETE-HEAVY DUTY SPECIAL,
30"x30"x36"

JUNCTION BOX: TYPE AND SIZE AS INDICATED
ON PLANS

PULL BOX: TYPE AND SIZE AS INDICATED
ON PLANS

TELEPHONE CONNECTION

FIBER OPTIC COMMUNICATIONS HUT

LIGHTED SIGN STRUCTURE-CANTILEVER TYPE
(NUMBER OF FLUORESCENT FIXTURES AS
INDICATED WITH ASSOCIATED DISCONNECT
SWITCH - TYP.) (N.I.C.)

LIGHTED SIGN STRUCTURE-TRUSS TYPE

TEMPORARY LIGHTED SIGN STRUCTURE-TRUSS
TYPE, QUANTITY OF LUMINAIRES AS SHOWN
ON SIGNING PLANS

LIGHTED SIGN STRUCTURE-BRIDGE MOUNT TYPE

DYNAMIC MESSAGE SIGN

FLASHING BEACON SIGN

CLOSED CIRCUIT TELEVISION CAMERA

MICROWAVE DETECTOR

DETECTOR LOOP

CONTROLLER CABINET FOUNDATION

CONTROLLER CABINET FOUNDATION: SURVEILLANCE

CONTROLLER CABINET FOUNDATION: SURVEILLANCE,
TYPE 334

RAMP METER SIGNAL POLE/HEAD FOUNDATION

RAMP METER FLASHER FOUNDATION

TEMPORARY WOOD POLE, 50 FOOT LENGTH
(10 FOOT BURIED, 40 FOOT INSTALLED HEIGHT)

HIGHWAY ADVISORY RADIO ANTENNA

ELECTRIC UTILITY POLE

CCTV CAMERA POLE

PULLING PEDESTAL

ELECTRICAL SYMBOLS FOR EXISTING CONDITIONS

EXISTING LIGHTING UNIT, TWIN LUMINAIRE

EXISTING LIGHTING UNIT

EXISTING TEMPORARY LIGHTING UNIT

EXISTING CDOT LIGHTING UNIT

EXISTING UNDERPASS LUMINAIRE

EXISTING ELECTRIC HANDHOLE

EXISTING JUNCTION BOX

EXISTING PULL BOX

EXISTING TELEPHONE CONNECTION

EXISTING FIBER OPTIC COMMUNICATIONS HUT

EXISTING ELECTRIC HANDHOLE/MANHOLE

EXISTING CDOT ELECTRIC HANDHOLE/MANHOLE

EXISTING LIGHTED SIGN STRUCTURE-CANTILEVER TYPE

EXISTING LIGHTED SIGN STRUCTURE-TRUSS TYPE

EXISTING LIGHTED SIGN STRUCTURE-BRIDGE MOUNT TYPE

EXISTING DYNAMIC MESSAGE SIGN

EXISTING FLASHING BEACON SIGN

EXISTING CLOSED CIRCUIT TELEVISION CAMERA

EXISTING MICROWAVE DETECTOR

EXISTING DETECTOR LOOP

EXISTING LIGHTING CONTROLLER, DUPLEX

EXISTING CONTROLLER CABINET

EXISTING RAMP METER SIGNAL POLE/HEAD

PULLING PEDESTAL

EXISTING RAMP METER FLASHER

EXISTING HIGHWAY ADVISORY RADIO ANTENNA

EXISTING CCTV CAMERA POLE

EXISTING UTILITY SERVICE CONNECTION, POLE MOUNTED

EXISTING UTILITY SERVICE CONNECTION, PAD MOUNTED

EXISTING CONCEALED CONDUIT IN STRUCTURE

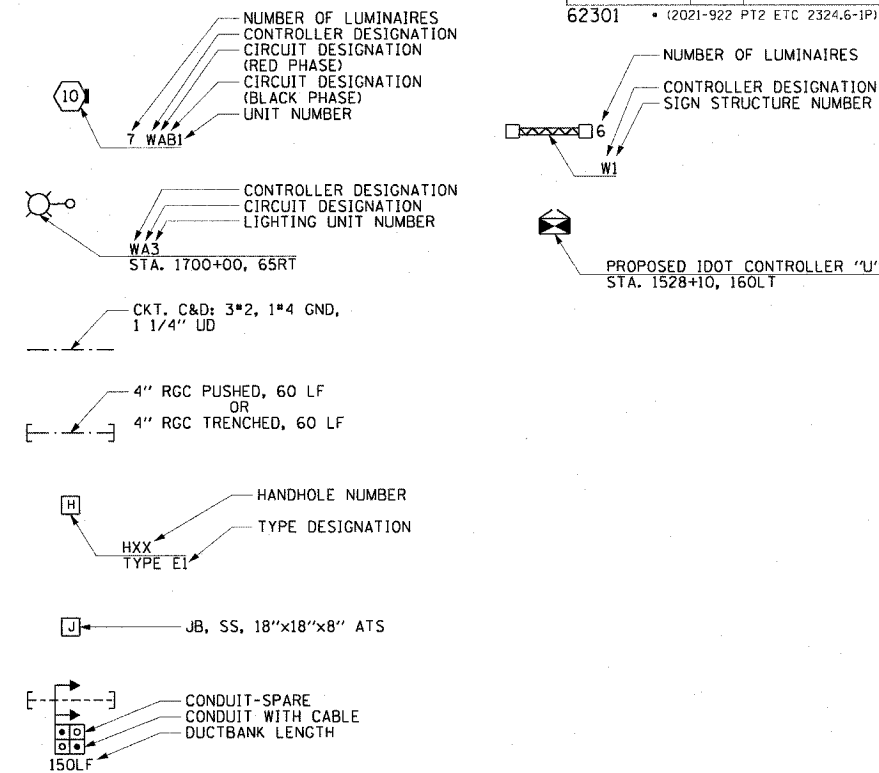
EXISTING EXPOSED CONDUIT

EXISTING RACEWAY OR DIRECT BURIED CABLE WITHOUT ENCASUREMENT

EXISTING CONCEALED CONDUIT UNDERGROUND, TRENCHED OR PUSHED

EXISTING ELECTRIC CABLE IN CONDUIT

GENERAL ELECTRICAL CALLOUTS



EI-100

REVISIONS	
NAME	DATE

ILLINOIS DEPARTMENT OF TRANSPORTATION
F.A.I. 90/94 (DAN RYAN EXPRESSWAY)
GARFIELD BLVD TO 31ST STREET (NB LOCAL LANES)

ELECTRICAL SYMBOLS

SCALE: NOT TO SCALE
DATE: June 9, 2006
DRAWN BY: HAR
CHECKED BY: JPC

P:\P40465\electrical\B-ctrls 18 & 19\contract\BNSW\B02\csh