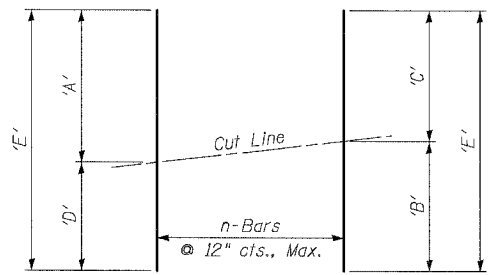
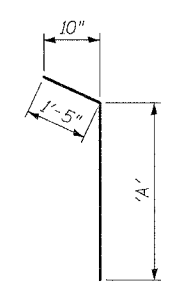
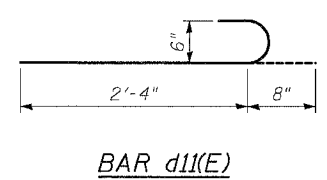
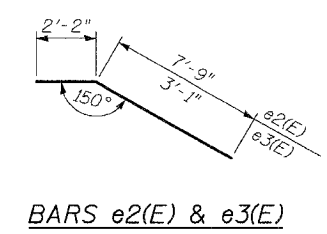
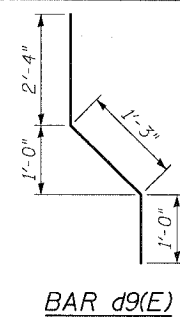


BILL OF MATERIAL

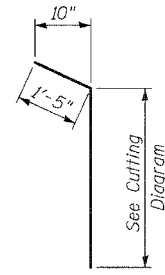


* Order bars d1(E), d2(E), v1(E) thru v4(E) and v27(E), v29(E), v31(E), v33(E), v35(E) and v37(E) full length, cut as shown and use remainder where indicated.

TABLE OF DIMENSIONS

Bar	'A'	'B'	'C'	'D'	'E'	n
d1(E)	2'-4"	1'-8"	1'-7"	11"	3'-3"	6
d2(E)	3'-4"	2'-8"	2'-6"	1'-10"	5'-2"	5
v1(E)	9'-5"	8'-8"	8'-7"	7'-10"	17'-3"	13
v2(E)	12'-3"	11'-6"	11'-5"	10'-8"	22'-11"	13
v3(E)	7'-10"	7'-3"	7'-3"	6'-8"	14'-6"	13
v4(E)	10'-8"	10'-1"	10'-1"	9'-6"	20'-2"	13
v27(E)	7'-11"	7'-9"	7'-9"	7'-7"	15'-6"	15
v28(E)	9'-8"	9'-6"	9'-6"	9'-4"	19'-0"	15
v29(E)	7'-7"	7'-3"	7'-3"	6'-11"	14'-6"	15
v30(E)	9'-4"	9'-0"	9'-0"	8'-8"	18'-0"	15
v31(E)	6'-11"	6'-6"	6'-6"	6'-1"	13'-0"	15
v32(E)	8'-8"	8'-3"	8'-3"	7'-10"	16'-6"	15
v33(E)	6'-1"	5'-8"	5'-8"	5'-3"	11'-4"	15
v34(E)	7'-10"	7'-5"	7'-5"	7'-0"	14'-10"	15
v35(E)	5'-3"	4'-7"	4'-6"	3'-10"	9'-1"	15
v36(E)	7'-0"	6'-4"	6'-3"	5'-7"	12'-7"	15
v37(E)	3'-10"	3'-3"	3'-2"	2'-7"	6'-5"	15
v38(E)	5'-7"	5'-0"	4'-11"	4'-4"	9'-11"	15

Bar	'A'
v26(E)	8'-3"
v40(E)	2'-10"
v42(E)	2'-8"



** BARS v28(E), v30(E), v32(E), v34(E), v36(E) & v38(E)
 ** Cut bars v28(E), v30(E), v32(E), v34(E), v36(E), & v38(E) according to Cutting Diagram, then bend according to Bar Bend Detail.

Bar	No.	Size	Length	Shape
d1(E)	6	#5	3'-3"	---
d2(E)	5	#6	5'-2"	---
d3(E)	30	#5	4'-5"	---
d4(E)	30	#6	5'-4"	---
d5(E)	31	#5	4'-6"	---
d6(E)	31	#6	5'-5"	---
d7(E)	62	#5	4'-7"	---
d8(E)	62	#6	5'-6"	---
d9(E)	635	#5	4'-7"	---
d10(E)	9	#6	5'-5"	---
d11(E)	253	#6	3'-0"	---
e1(E)	4	#5	11'-6"	---
e2(E)	4	#5	9'-11"	---
e3(E)	4	#5	5'-3"	---
e4(E)	8	#5	31'-4"	---
e5(E)	48	#5	29'-8"	---
e6(E)	96	#5	32'-2"	---
e7(E)	8	#5	28'-3"	---
e8(E)	8	#5	25'-9"	---
e9(E)	16	#5	22'-2"	---
e10(E)	8	#5	19'-8"	---
e11(E)	8	#5	25'-10"	---
e12(E)	8	#5	25'-4"	---
h1(E)	6	#5	28'-1"	---
h2(E)	72	#5	29'-8"	---
h3(E)	170	#5	32'-2"	---
h4(E)	18	#5	28'-3"	---
h5(E)	16	#5	25'-9"	---
h6(E)	36	#5	22'-2"	---
h7(E)	18	#5	19'-8"	---
h8(E)	20	#5	25'-10"	---
h9(E)	6	#5	25'-4"	---
v1(E)	13	#5	17'-3"	---
v2(E)	13	#6	22'-11"	---
v3(E)	13	#5	14'-6"	---
v4(E)	13	#6	20'-2"	---
v5(E)	62	#5	6'-7"	---
v6(E)	62	#6	9'-5"	---
v7(E)	31	#5	6'-6"	---
v8(E)	31	#6	9'-4"	---
v9(E)	31	#5	6'-10"	---
v10(E)	31	#6	9'-8"	---
v11(E)	31	#5	7'-0"	---
v12(E)	31	#6	9'-10"	---
v13(E)	31	#5	7'-3"	---
v14(E)	31	#6	10'-1"	---
v15(E)	31	#5	7'-6"	---
v16(E)	31	#6	10'-4"	---
v17(E)	21	#5	7'-8"	---
v18(E)	21	#6	10'-6"	---

Bar	No.	Size	Length	Shape
v19(E)	21	#5	7'-10"	---
v20(E)	21	#6	10'-8"	---
v21(E)	52	#5	8'-0"	---
v22(E)	33	#6	10'-10"	---
v23(E)	27	#5	8'-1"	---
v24(E)	27	#6	10'-11"	---
v25(E)	9	#5	8'-0"	---
v26(E)	10	#6	9'-8"	---
v27(E)	15	#5	15'-6"	---
v28(E)	15	#6	19'-0"	---
v29(E)	15	#5	14'-6"	---
v30(E)	15	#6	18'-0"	---
v31(E)	15	#5	13'-0"	---
v32(E)	15	#6	16'-6"	---
v33(E)	15	#5	11'-4"	---
v34(E)	15	#6	14'-10"	---
v35(E)	15	#5	9'-1"	---
v36(E)	15	#6	12'-7"	---
v37(E)	15	#5	6'-5"	---
v38(E)	15	#6	9'-11"	---
v39(E)	31	#5	2'-6"	---
v40(E)	31	#6	4'-3"	---
v41(E)	26	#5	2'-4"	---
v42(E)	26	#6	4'-1"	---

Reinforcement Bars, Epoxy Coated	Pound	35,680
Concrete Structures	Cu. Yd.	171.0
Concrete Superstructure	Cu. Yd.	69.1
Chain Link Fence, 42" Attached to Structure (Special)	Foot	470
Chain Link Gate Assembly (Special)	Each	1
Rustication Finish	Sq. Ft.	4,222
Protective Coat	Sq. Yd.	592

REVISIONS	NAME	DATE

ILLINOIS DEPARTMENT OF TRANSPORTATION
 F.A.I. 94/90 (DAN RYAN EXPRESSWAY)
 GARFIELD BLVD TO 31ST STREET (NB LOCAL LANES)
 COOK COUNTY
 STA. 4529+75.90 TO STA. 4537+30.74
 RETAINING WALL N-47N-R
 BILL OF MATERIAL
 S.N. 016-W977

SCALE: NTS
 DATE: JUNE 9, 2006

DRAWN BY: MTR
 CHECKED BY: BLU