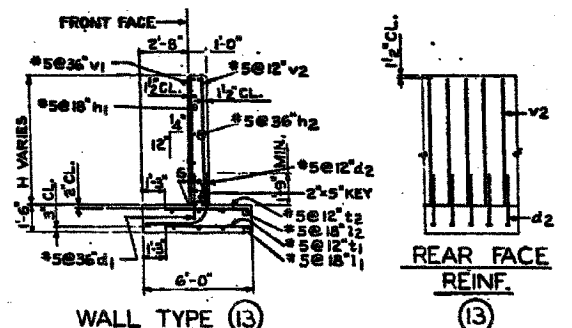
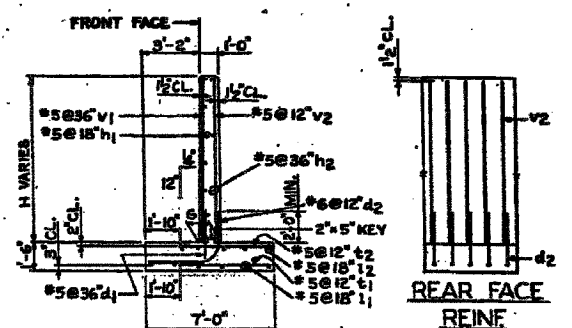


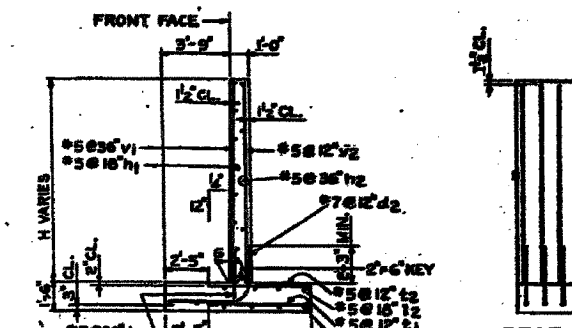
WALL TYPE 12
H VARIES TO 5'-0"



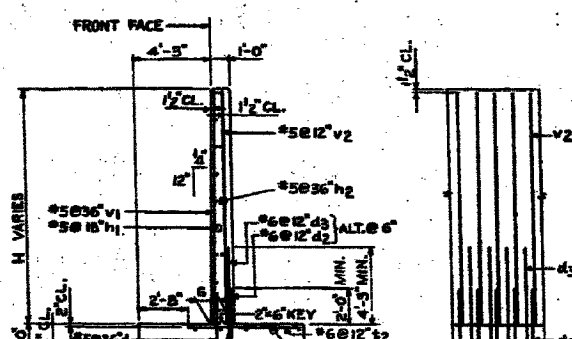
WALL TYPE 13
H VARIES 5'-1" TO 7'-0"



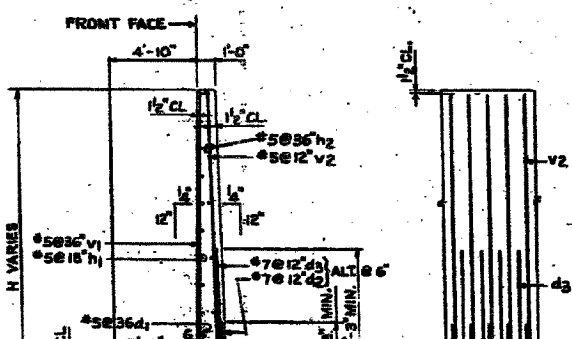
WALL TYPE 14
H VARIES 7'-1" TO 9'-0"



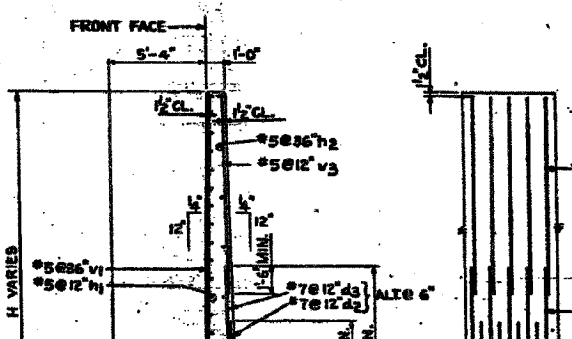
WALL TYPE 15
H VARIES 9'-1" TO 11'-0"



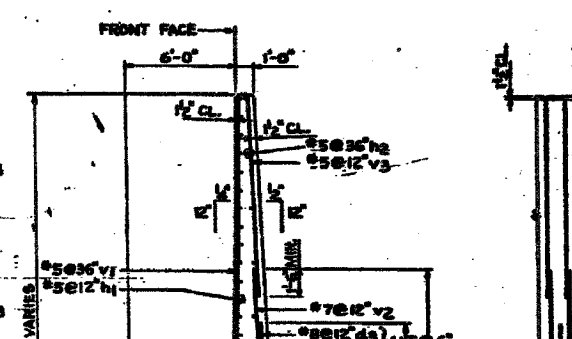
WALL TYPE 16
H VARIES 11'-1" TO 13'-0"



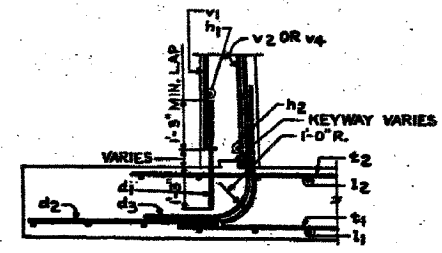
WALL TYPE 17
H VARIES 13'-1" TO 15'-0"



WALL TYPE 18
H VARIES 15'-1" TO 17'-0"



WALL TYPE 19
H VARIES 17'-1" TO 19'-0"



TYPICAL DETAIL JUNCTION
OF STEM & FOOTING
SCALE: 1/2" = 1'-0"

WALL TYPE	12	13	14	15	16	17	18	19	20	21	22
G' MAX.	1'-1 1/2"	1'-1 3/4"	1'-2 1/4"	1'-2 3/4"	1'-3 1/4"	1'-3 3/4"	1'-4 1/4"	1'-4 3/4"	1'-5 1/4"	1'-5 3/4"	1'-6 1/4"

NOTE: 'G' VARIES DUE TO CHANGE IN WALL HEIGHT 'H'. FOR VALUES OF 'G' MAXIMUM SEE TABLE.

ILLINOIS DIVISION OF HIGHWAYS
SOUTH EXPRESSWAY
STANDARD RETAINING WALL DETAILS
SPREAD FOOTINGS - 3000 PSF
WALL TYPES 12 THRU 19

REVISIONS	
NAME	DATE

ILLINOIS DEPARTMENT OF TRANSPORTATION
F.A.I. 94/90 (DAN RYAN EXPRESSWAY)
GARFIELD BLVD TO 31ST STREET (NB LOCAL LANES)
COOK COUNTY
STA. 4529+75.90 TO STA. 4537+30.74
RETAINING WALL N-47N-R
EXISTING RETAINING WALL PLAN 4
S.N. 016-W977
SCALE: NTS
DATE: JUNE 9, 2006
DRAWN BY: KMW
CHECKED BY: BLU

FOR INFORMATION ONLY

BOWMAN, BARRETT & ASSOCIATES INC.
CONSULTING ENGINEERS
Chicago, Illinois
312.228.0100
www.bbainc.com

6/7/2006 3:45:45 PM